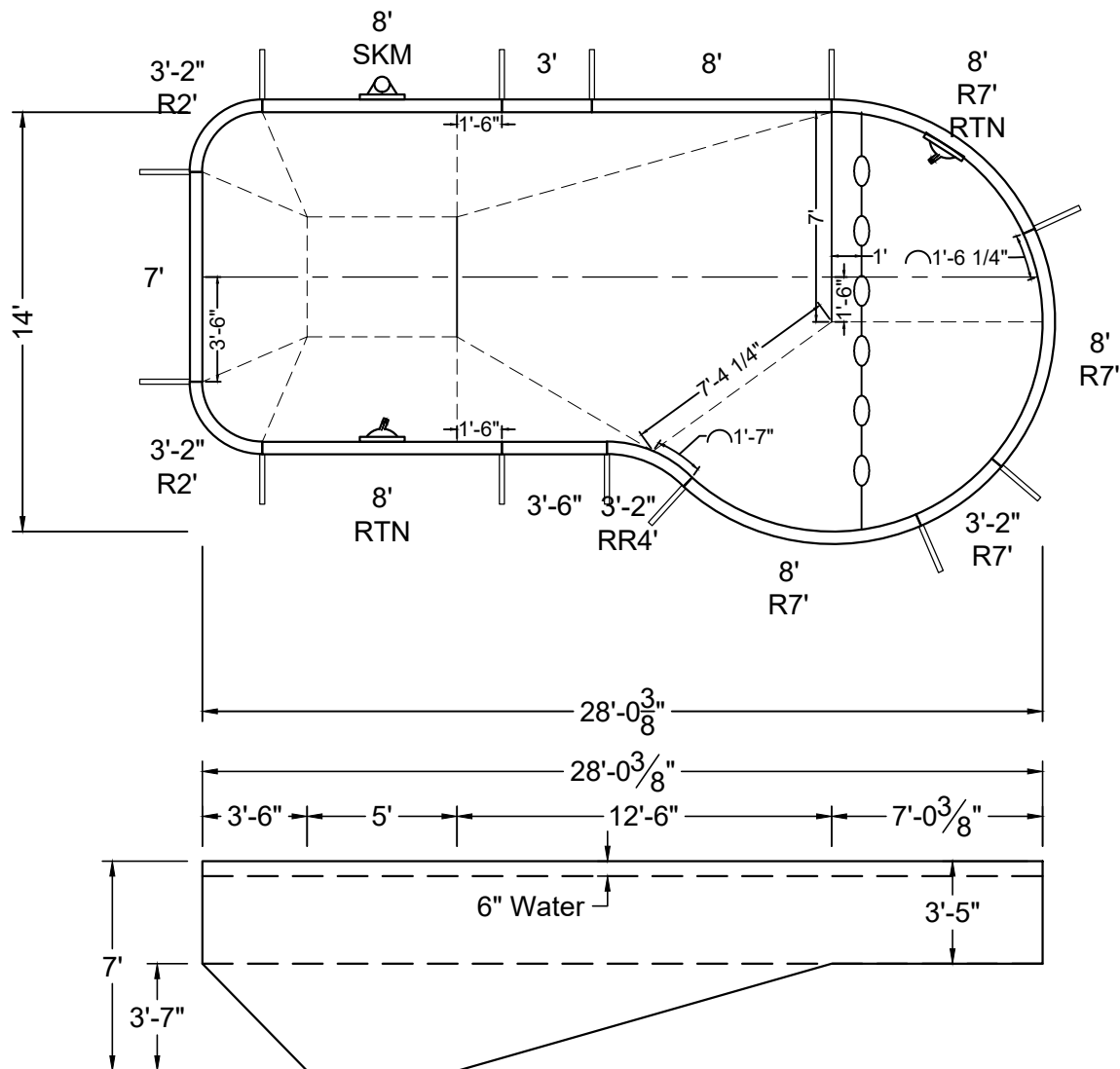
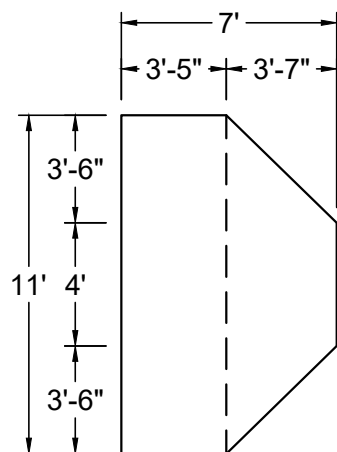


ALL DIMENSIONS ARE FINISHED



NON-DIVING POOL
USE OF DIVING EQUIPMENT IS PROHIBITED

MEETS DEPTH AND SHAPE MINIMUM STANDARD ANSI/NSPI5-2003



SHAPE : RIVIERA	SIZE : 11' X 28'	HAND : LEFT	PANEL HEIGHT : 3'-6"	PANEL TYPE : 5" TOP
PERIMETER : 74'-1 13/32"	VOLUME : 11,017 US GAL.	SURFACE AREA : 319.106 SQ. FT.	SCALE : N.T.S	DRAWN BY : NM-BCC
DWG # : MN1428RI219	DATE : 1/25/2017	REVISION # : 01	KIT REF : MN1428RI219-L	A



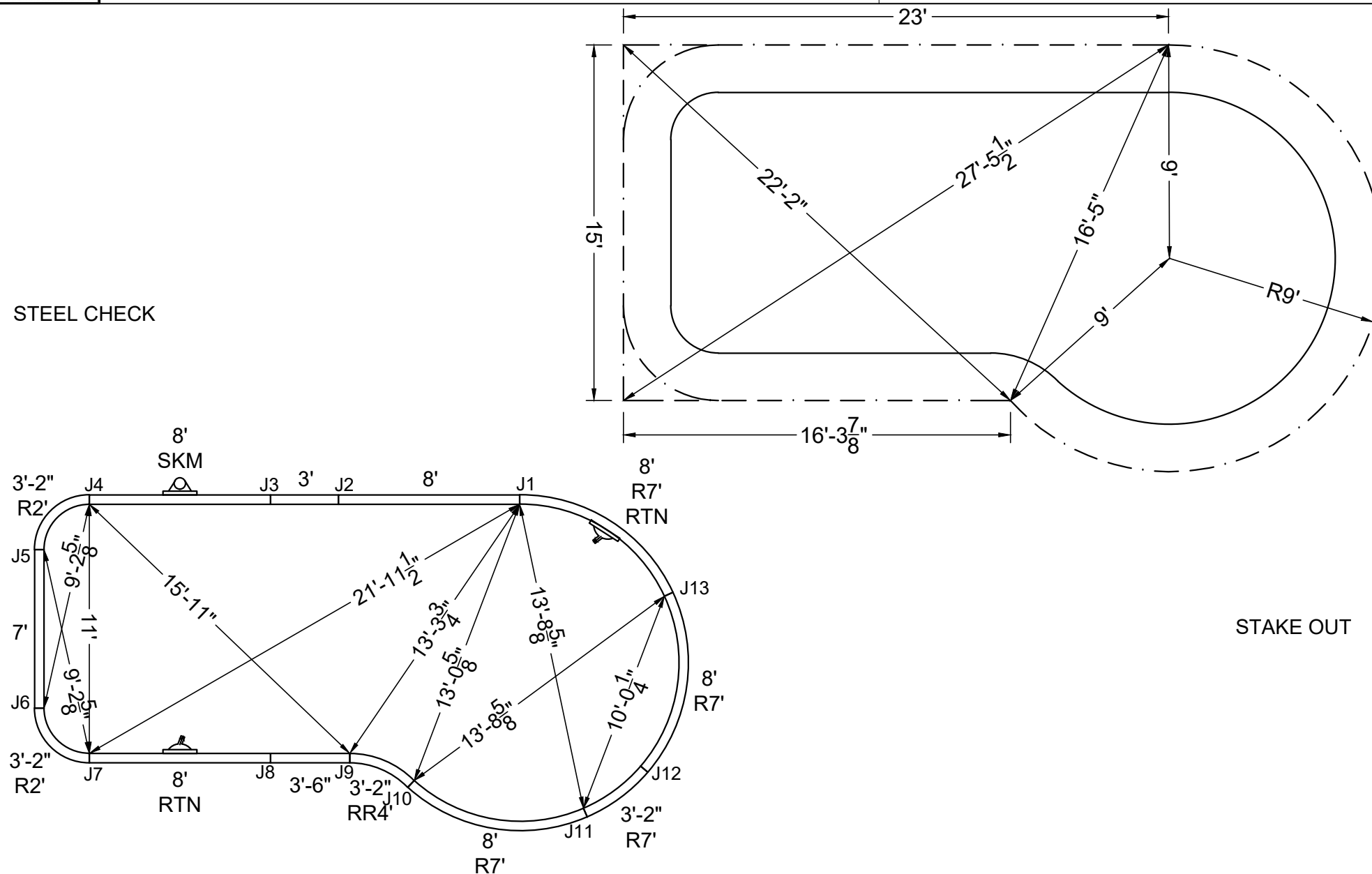
NON-DIVING POOL

USE OF DIVING EQUIPMENT IS PROHIBITED

MEETS DEPTH AND SHAPE MINIMUM STANDARD ANSI/NSPI5-2003

ALL DIMENSIONS ARE FINISHED

STEEL CHECK



STAKE OUT

SHAPE : RIVIERA

SIZE :	11' X 28'
--------	-----------

HAND :	LEFT
--------	------

PANEL HEIGHT :	3'-6"
----------------	-------

DRAWN BY :	NM-BCC
------------	--------

DWG #: MN1428RI219

DATE: 1/25/2017

REVISION #:	01
-------------	----

KIT REF :	MN1428RI219-L
-----------	---------------

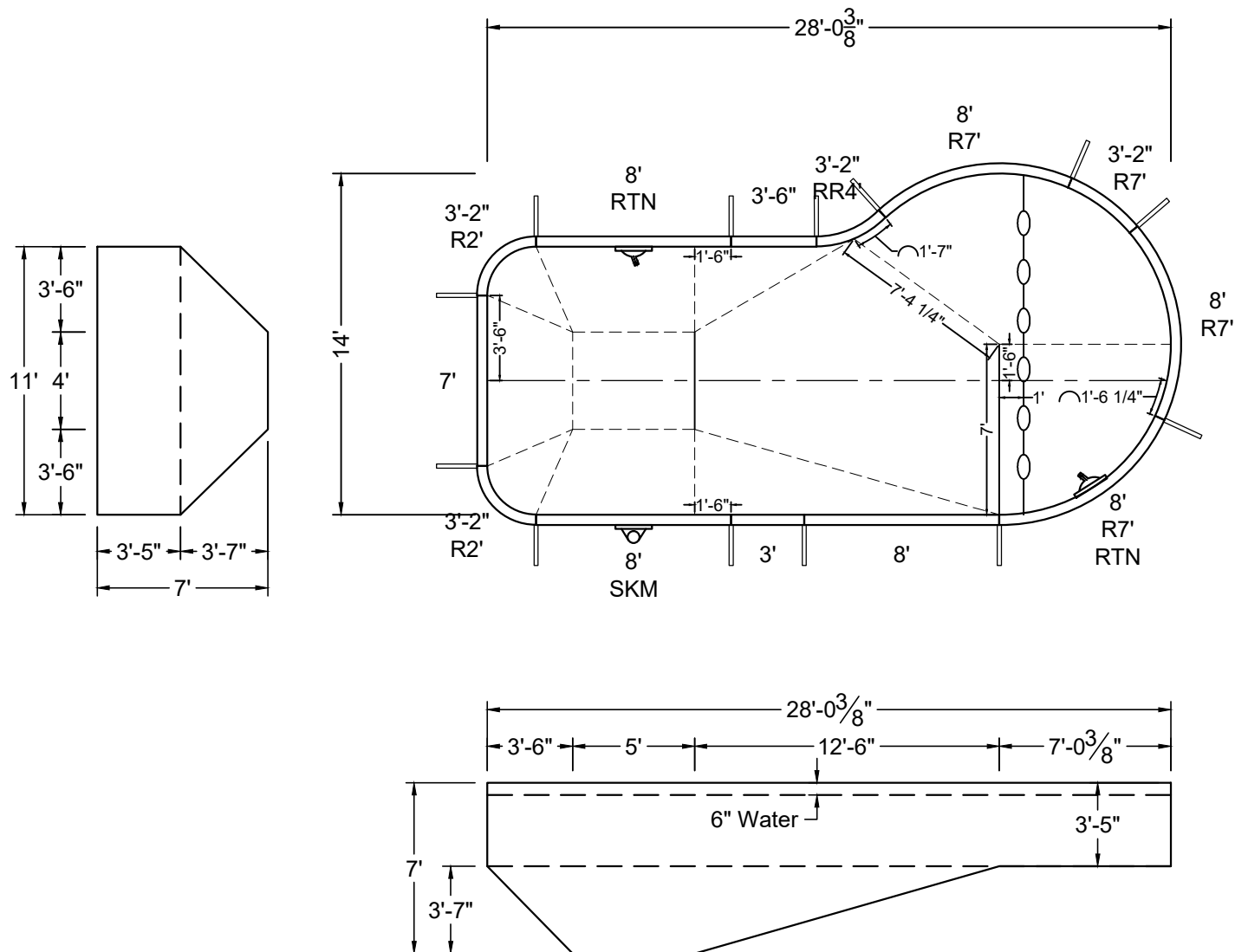
2



NON-DIVING POOL
USE OF DIVING EQUIPMENT IS PROHIBITED

MEETS DEPTH AND SHAPE MINIMUM STANDARD ANSI/NSPI5-2003

ALL DIMENSIONS ARE FINISHED



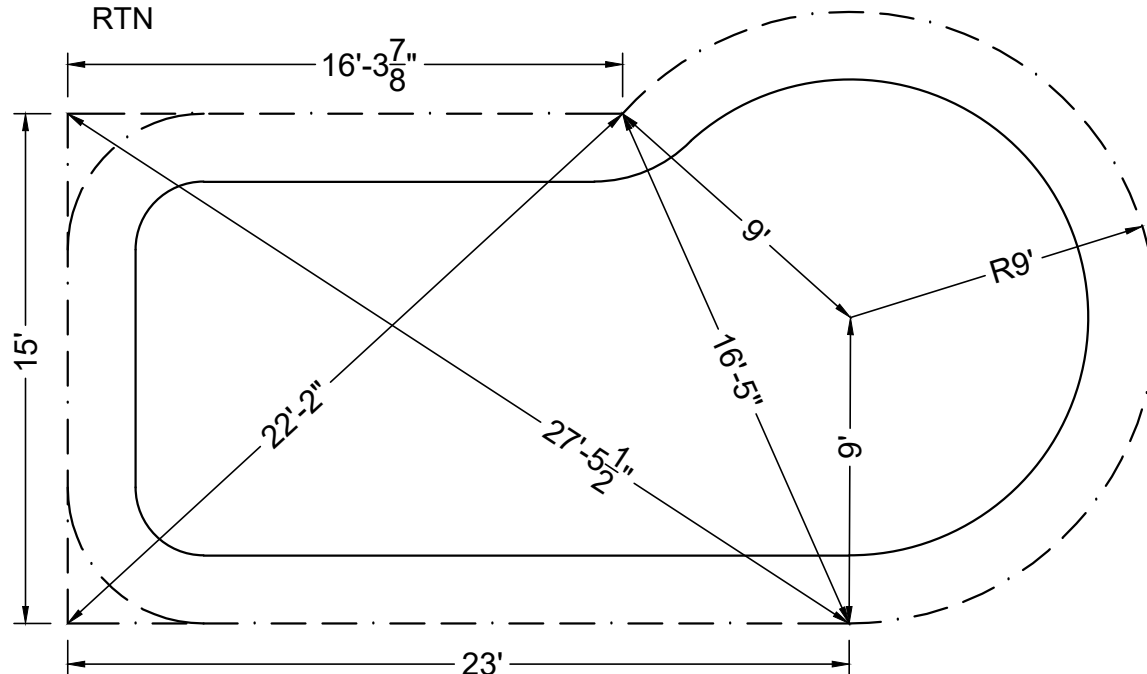
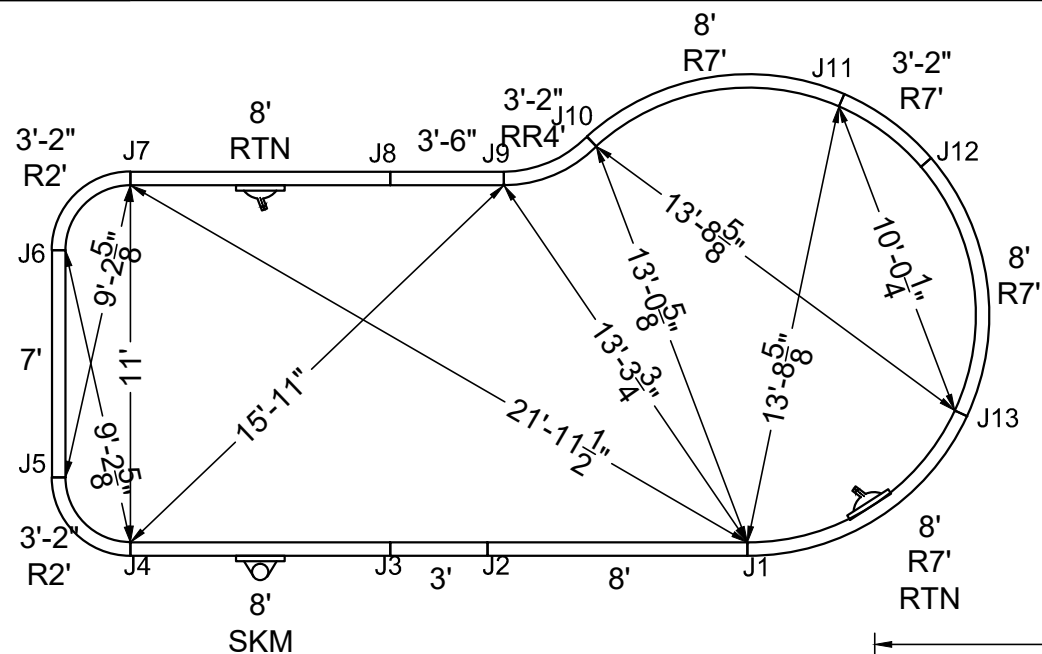
SHAPE : RIVIERA	SIZE : 11' X 28'	HAND : RIGHT	PANEL HEIGHT : 3'-6"	PANEL TYPE : 5" TOP
PERIMETER : 74'-1 13/32"	VOLUME : 11,017 US GAL.	SURFACE AREA : 319.106 SQ. FT.	SCALE : N.T.S	DRAWN BY : NM-BCC
DWG # : MN1428RI219	DATE : 1/25/2017	REVISION # : 01	KIT REF : MN1428RI219-R	A



NON-DIVING POOL
USE OF DIVING EQUIPMENT IS PROHIBITED

MEETS DEPTH AND SHAPE MINIMUM STANDARD ANSI/NSPI5-2003

ALL DIMENSIONS ARE FINISHED



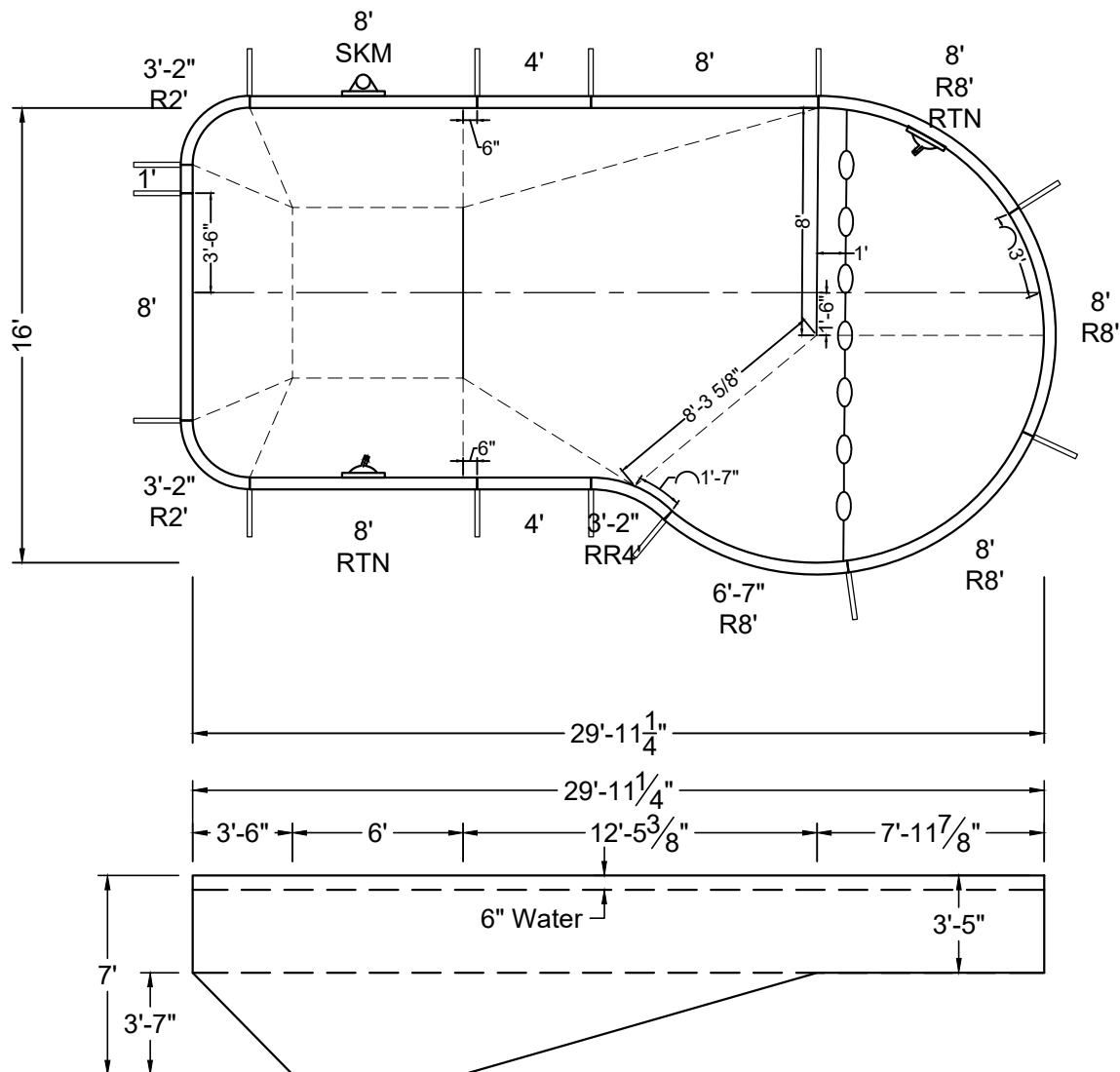
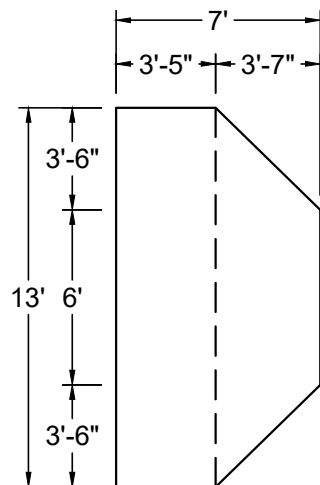
SHAPE: RIVIERA	SIZE: 11' X 28'	HAND: RIGHT	PANEL HEIGHT: 3'-6"	DRAWN BY: NM-BCC
DWG #: MN1428RI219	DATE: 1/25/2017	REVISION #: 01	KIT REF: MN1428RI219-R	B

ALL DIMENSIONS ARE FINISHED



NON-DIVING POOL
USE OF DIVING EQUIPMENT IS PROHIBITED

DOES NOT MEET DEPTH AND SHAPE MINIMUM STANDARD ANSI/NSPI5-2003



SHAPE : RIVIERA	SIZE : 13' X 29'-11"	HAND : LEFT	PANEL HEIGHT : 3'-6"	PANEL TYPE : 5" TOP
PERIMETER : 81'-0 13/32"	VOLUME : 13,962 US GAL.	SURFACE AREA : 397.368 SQ. FT.	SCALE : N.T.S	DRAWN BY : NM-BCC
DWG # : MN1630RI219	DATE : 1/25/2017	REVISION # : 01	KIT REF : MN1630RI219-L	A



MEGNA
POOLS

Megna Plastic Packaging Corp.

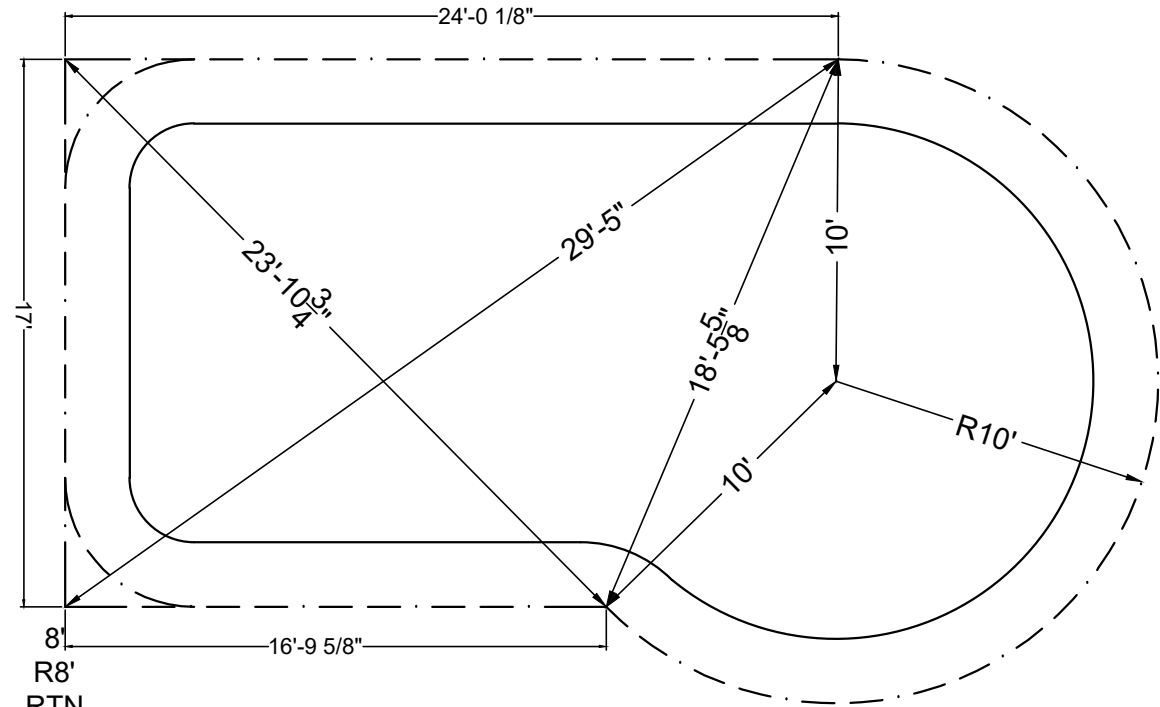
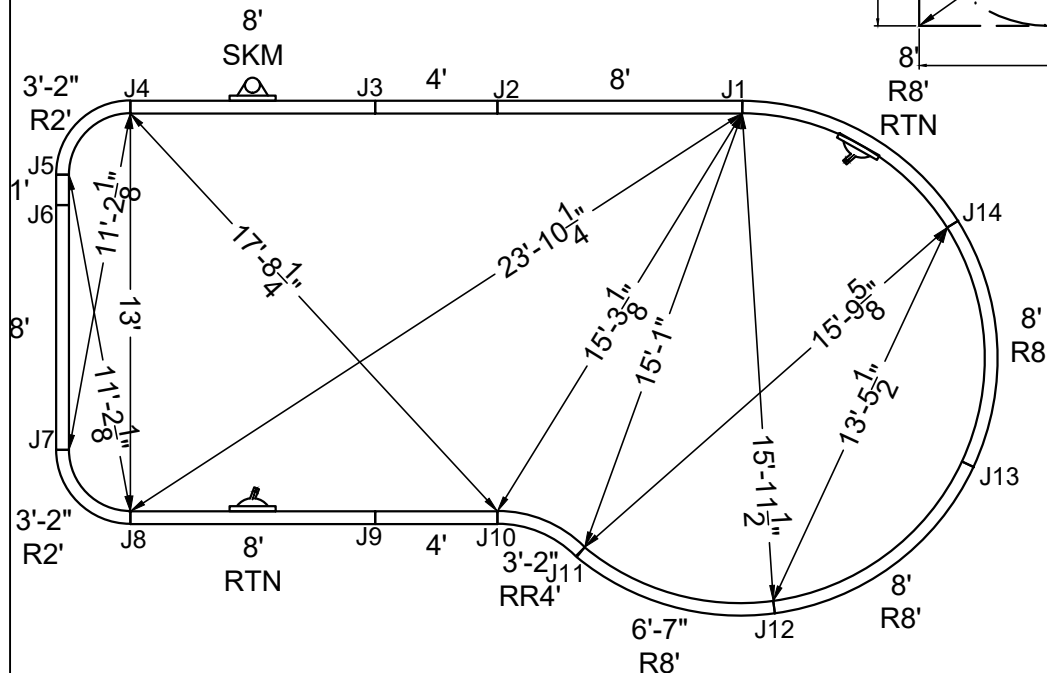


NON-DIVING POOL
USE OF DIVING EQUIPMENT IS PROHIBITED

DOES NOT MEET DEPTH AND SHAPE MINIMUM STANDARD ANSI/NSPI5-2003

ALL DIMENSIONS ARE FINISHED

STEEL CHECK



STAKE OUT

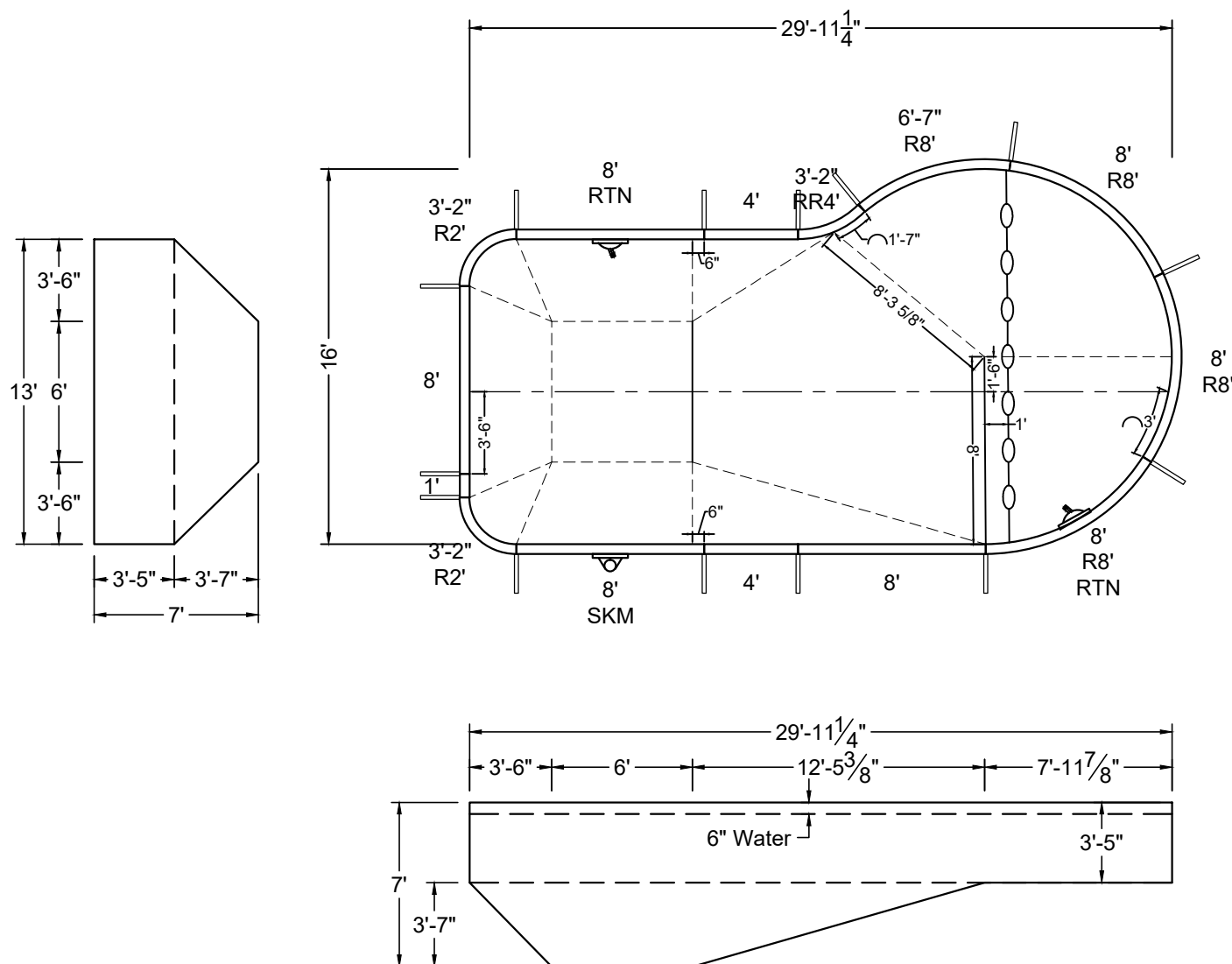
SHAPE : RIVIERA	SIZE : 13' X 29'-11"	HAND : LEFT	PANEL HEIGHT : 3'-6"	DRAWN BY : NM-BCC
DWG # : MN1630RI219	DATE : 1/25/2017	REVISION # : 01	KIT REF : MN1630RI219-L	B



NON-DIVING POOL
USE OF DIVING EQUIPMENT IS PROHIBITED

DOES NOT MEET DEPTH AND SHAPE MINIMUM STANDARD ANSI/NSPI5-2003

ALL DIMENSIONS ARE FINISHED

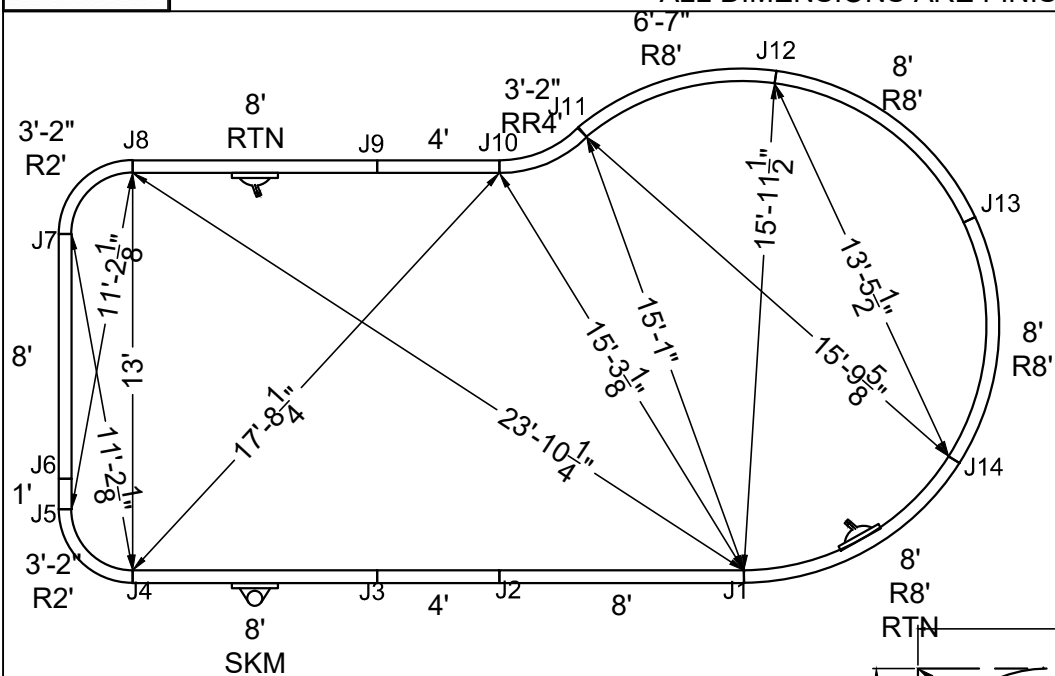


SHAPE : RIVIERA	SIZE : 13' X 29'-11"	HAND : RIGHT	PANEL HEIGHT : 3'-6"	PANEL TYPE : 5" TOP
PERIMETER : 81'-0 13/32"	VOLUME : 13,962 US GAL.	SURFACE AREA : 397.368 SQ. FT.	SCALE : N.T.S	DRAWN BY : NM-BCC
DWG # : MN1630RI219	DATE : 1/25/2017	REVISION # : 01	KIT REF : MN1630RI219-R	A



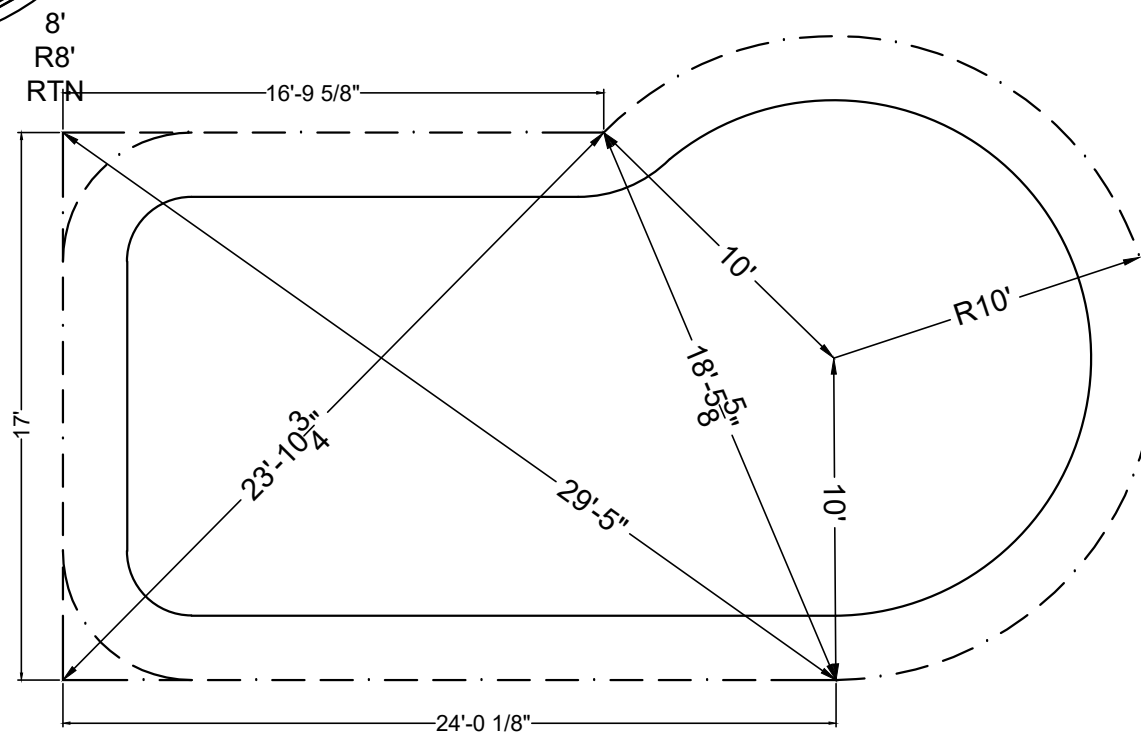
DOES NOT MEET DEPTH AND SHAPE MINIMUM STANDARD ANSI/NSPI5-2003

ALL DIMENSIONS ARE FINISHED



STAKE OUT

STEEL CHECK



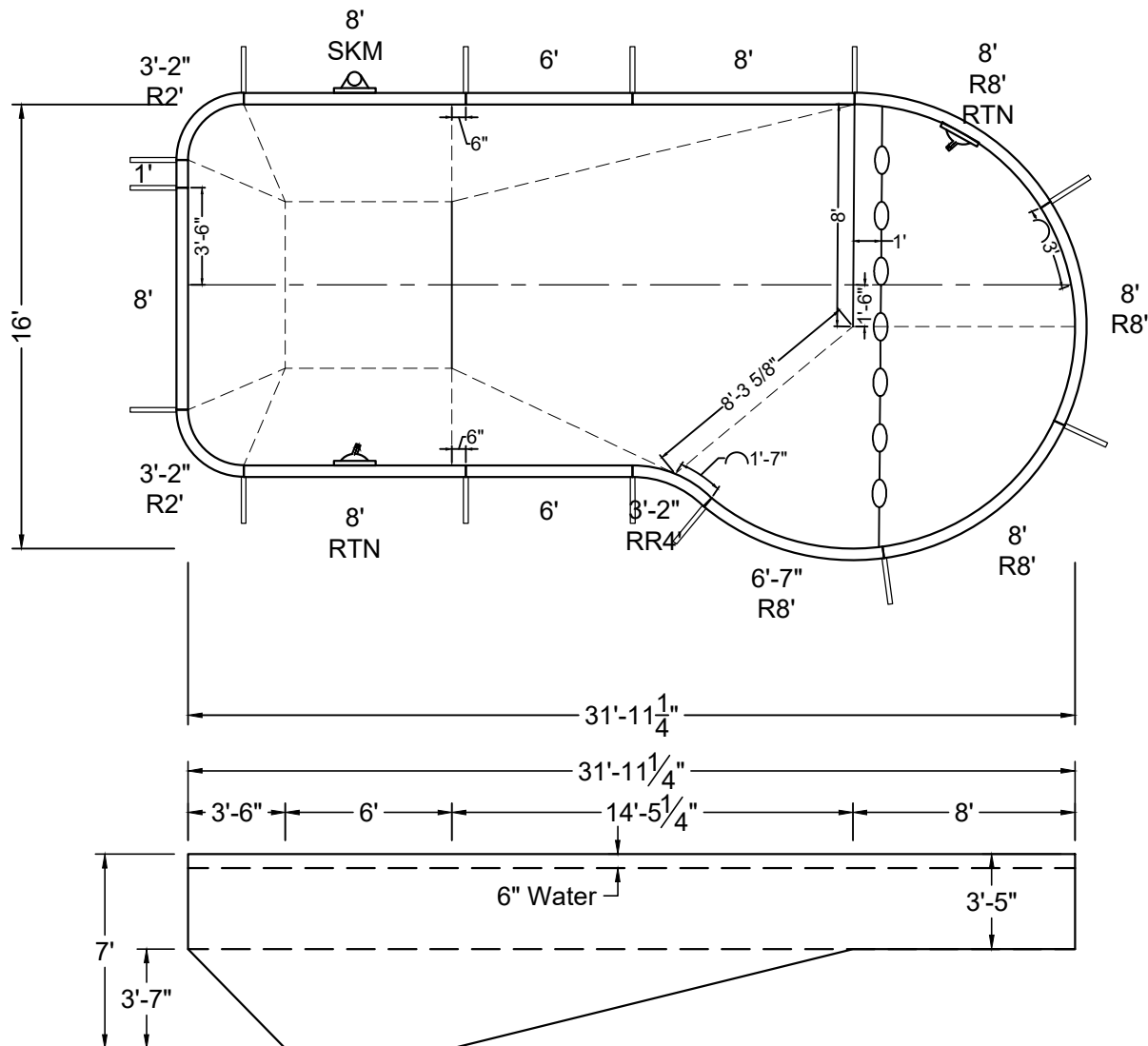
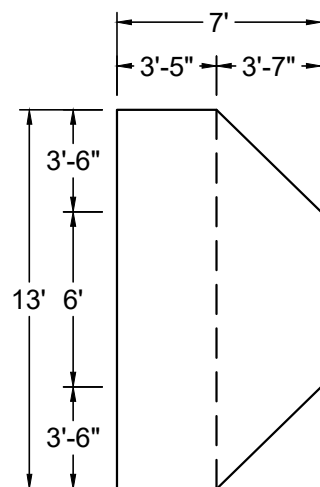
SHAPE : RIVIERA	SIZE : 13' X 29'-11"	HAND : RIGHT	PANEL HEIGHT : 3'-6"	DRAWN BY : NM-BCC
DWG # : MN1630RI219	DATE : 1/25/2017	REVISION # : 01	KIT REF : MN1630RI219-R	B



NON-DIVING POOL
USE OF DIVING EQUIPMENT IS PROHIBITED

MEETS DEPTH AND SHAPE MINIMUM STANDARD ANSI/NSPI5-2003

ALL DIMENSIONS ARE FINISHED



SHAPE : RIVIERA	SIZE : 13' X 31'-11"	HAND : LEFT	PANEL HEIGHT : 3'-6"	PANEL TYPE : 5" TOP
PERIMETER : 85'-0 13/32"	VOLUME : 14,910 US GAL.	SURFACE AREA : 423.368 SQ. FT.	SCALE : N.T.S	DRAWN BY : NM-BCC
DWG # : MN1632RI219	DATE : 1/25/2017	REVISION # : 01	KIT REF : MN1632RI219-L	A



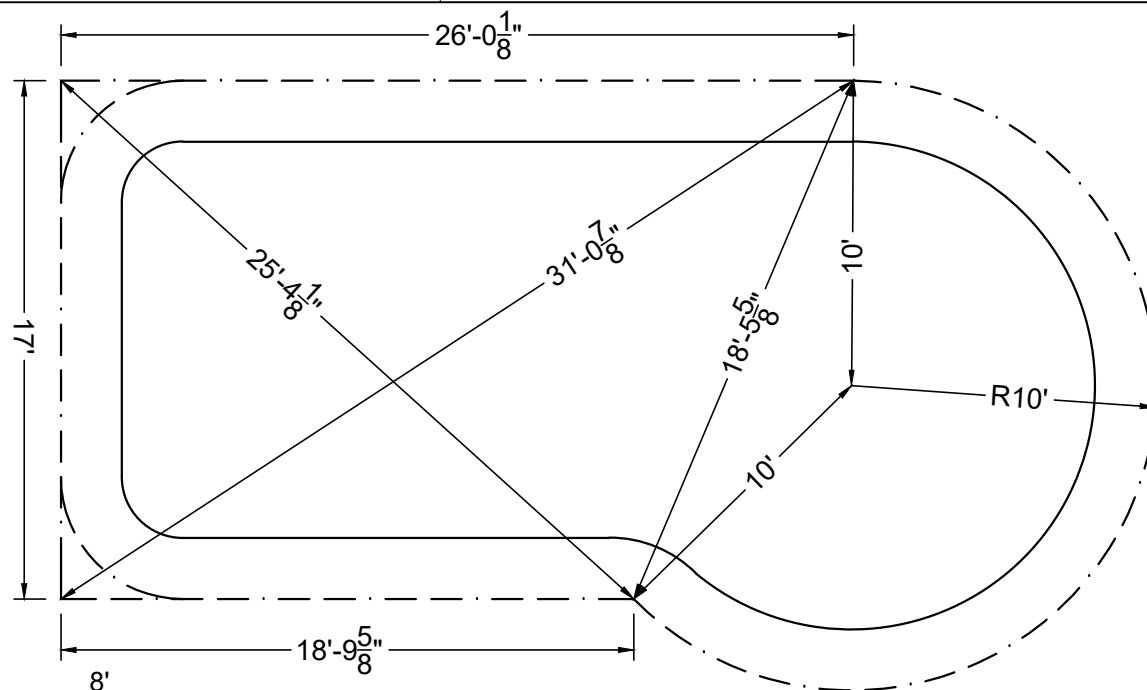
NON-DIVING POOL

USE OF DIVING EQUIPMENT IS PROHIBITED

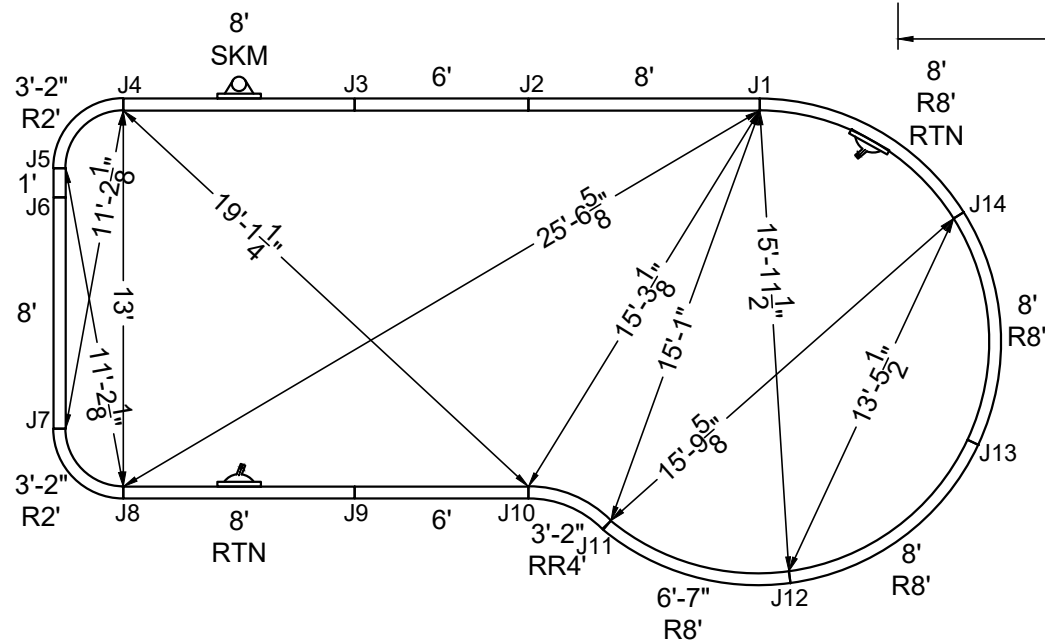
MEETS DEPTH AND SHAPE MINIMUM STANDARD ANSI/NSPI5-2003

ALL DIMENSIONS ARE FINISHED

STEEL CHECK



STAKE OUT

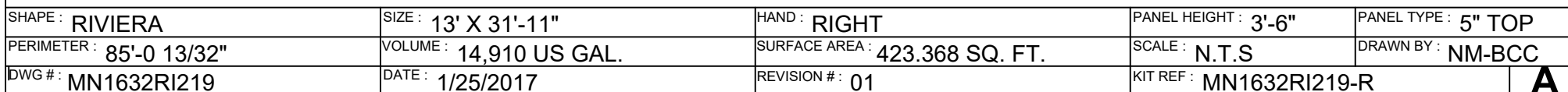


SHAPE : RIVIERA	SIZE : 13' X 31'-11"	HAND : LEFT	PANEL HEIGHT : 3'-6"	DRAWN BY : NM-BCC
DWG # : MN1632RI219	DATE : 1/25/2017	REVISION # : 01	KIT REF : MN1632RI219-L	B



MEETS DEPTH AND SHAPE MINIMUM STANDARD ANSI/NSPI5-2003

ALL DIMENSIONS ARE FINISHED



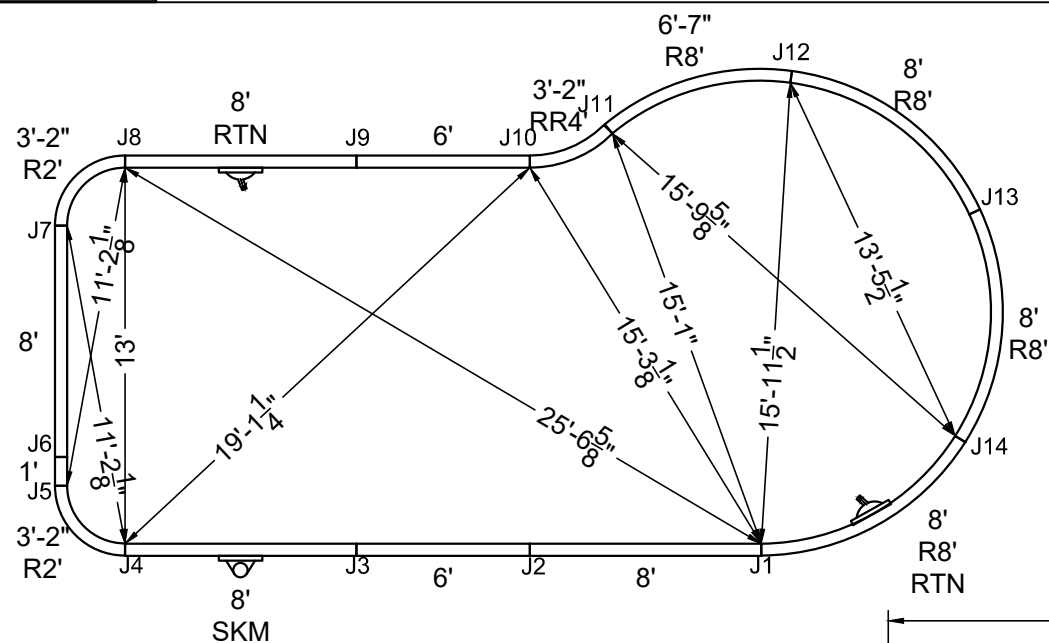


NON-DIVING POOL

USE OF DIVING EQUIPMENT IS PROHIBITED

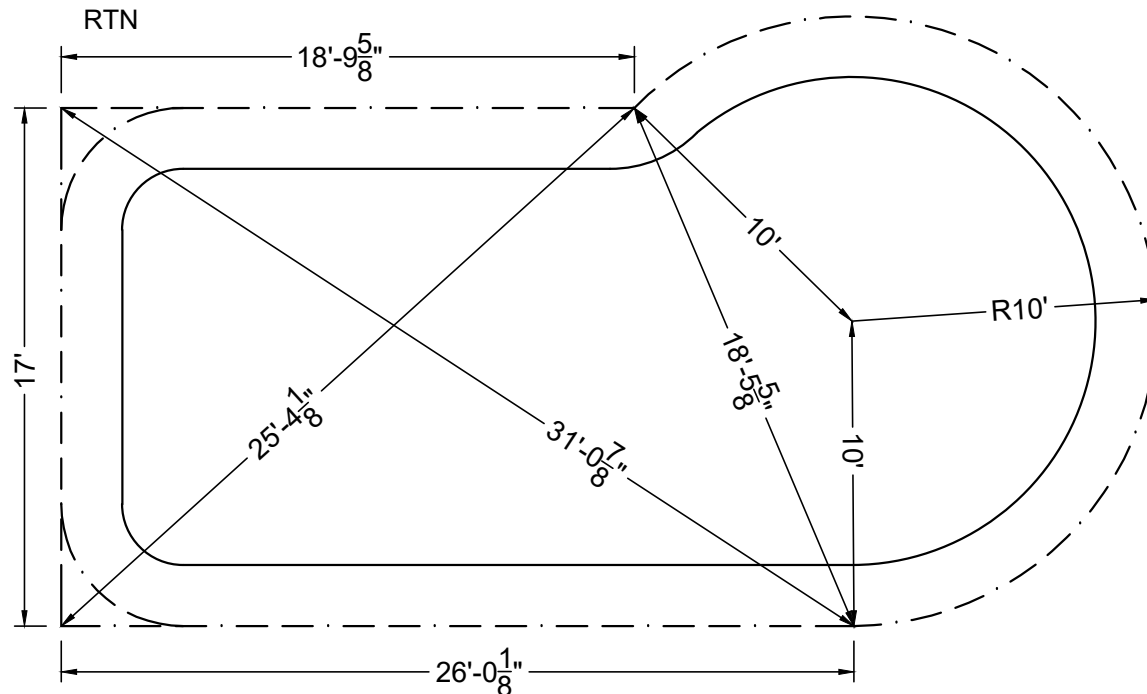
MEETS DEPTH AND SHAPE MINIMUM STANDARD ANSI/NSPI5-2003

ALL DIMENSIONS ARE FINISHED



STAKE OUT

STEEL CHECK



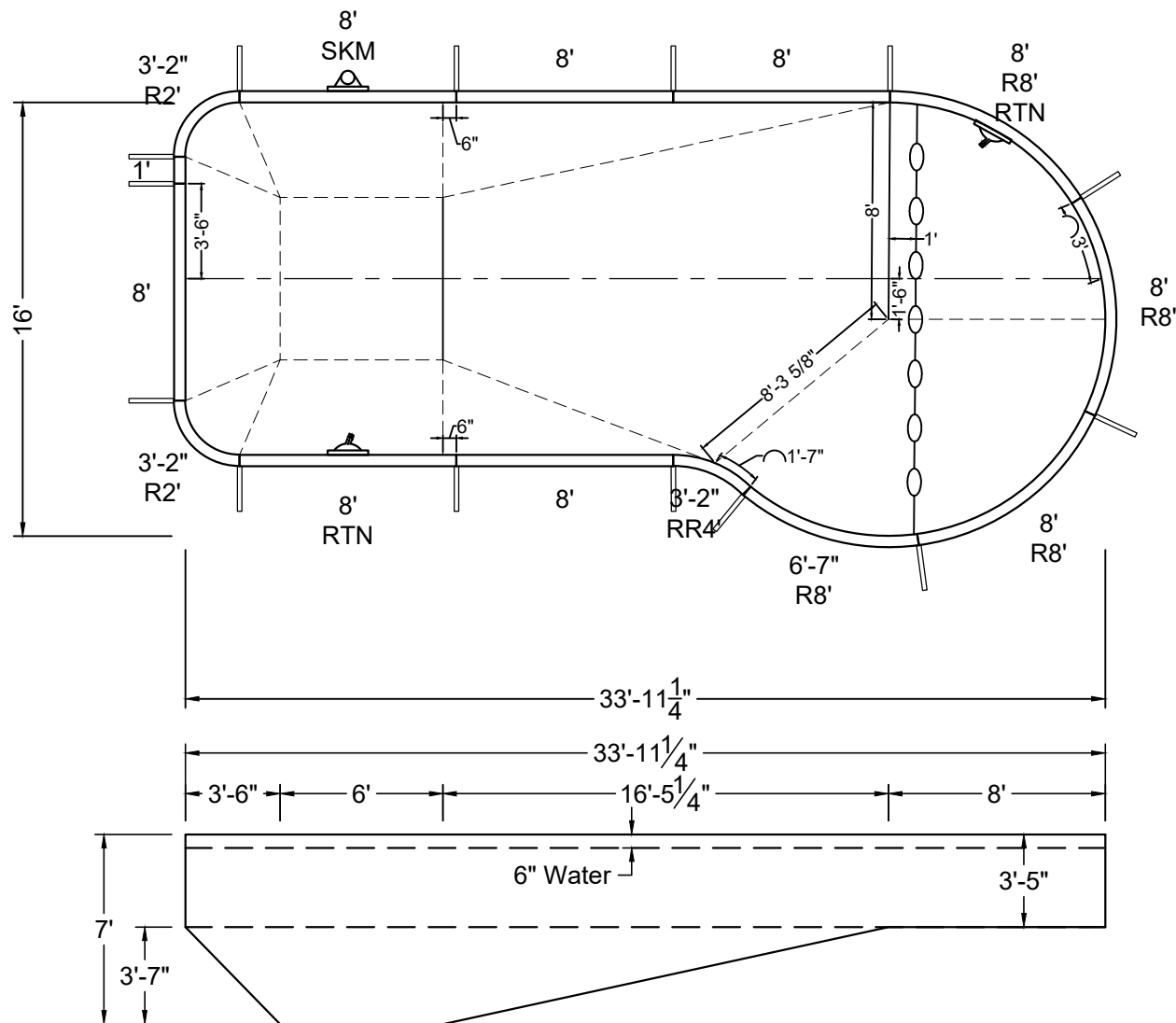
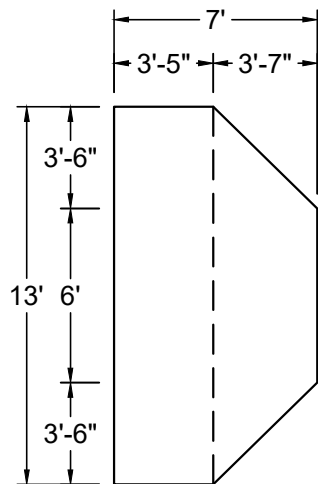
SHAPE : RIVIERA	SIZE : 13' X 31'-11"	HAND : RIGHT	PANEL HEIGHT : 3'-6"	DRAWN BY : NM-BCC
DWG # : MN1632RI219	DATE : 1/25/2017	REVISION # : 01	KIT REF : MN1632RI219-R	B

ALL DIMENSIONS ARE FINISHED



NON-DIVING POOL
USE OF DIVING EQUIPMENT IS PROHIBITED

MEETS DEPTH AND SHAPE MINIMUM STANDARD ANSI/NSPI5-2003



SHAPE : RIVIERA	SIZE : 13' X 33'-11"	HAND : LEFT	PANEL HEIGHT : 3'-6"	PANEL TYPE : 5" TOP
PERIMETER : 89'-0 13/32"	VOLUME : 15,861 US GAL.	SURFACE AREA : 449.368 SQ. FT.	SCALE : N.T.S	DRAWN BY : NM-BCC
DWG # : MN1634RI219	DATE : 1/25/2017	REVISION # : 01	KIT REF : MN1634RI219-L	A



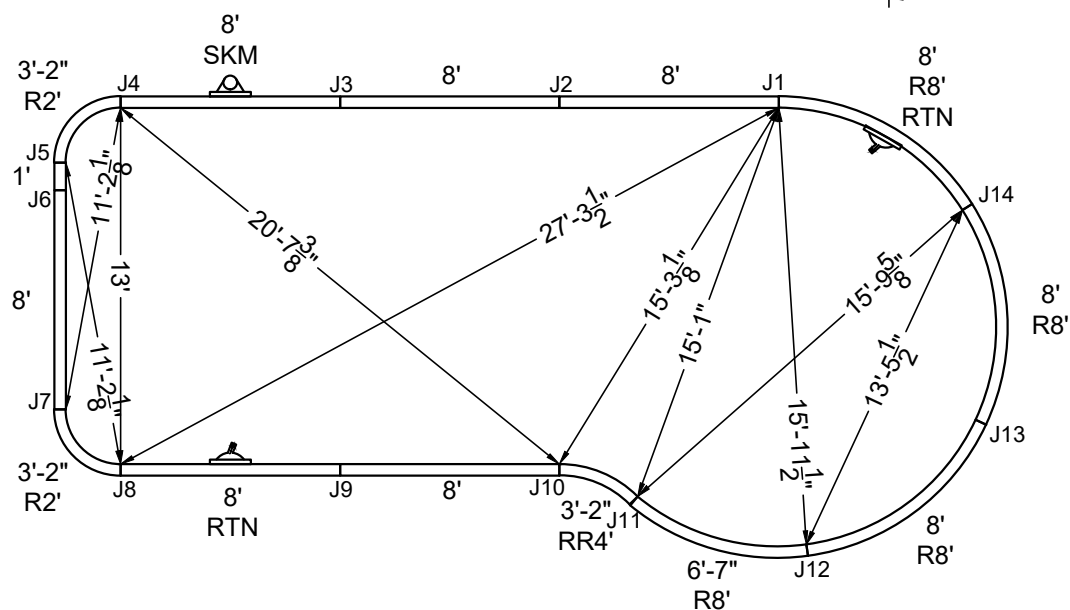
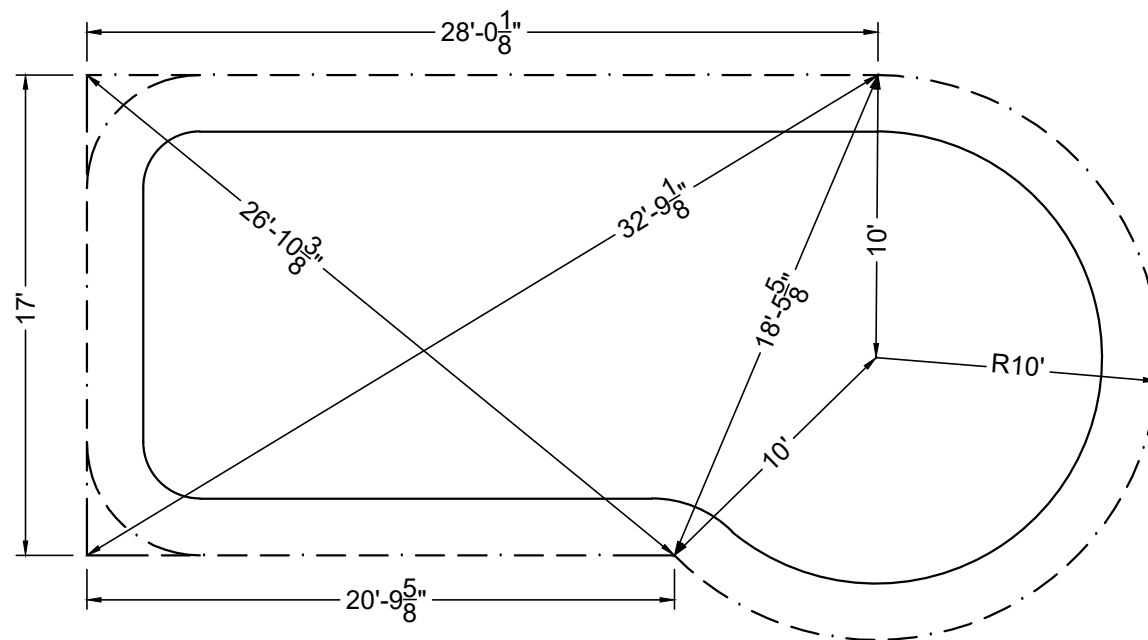
NON-DIVING POOL

USE OF DIVING EQUIPMENT IS PROHIBITED

MEETS DEPTH AND SHAPE MINIMUM STANDARD ANSI/NSPI5-2003

ALL DIMENSIONS ARE FINISHED

STEEL CHECK



STAKE OUT

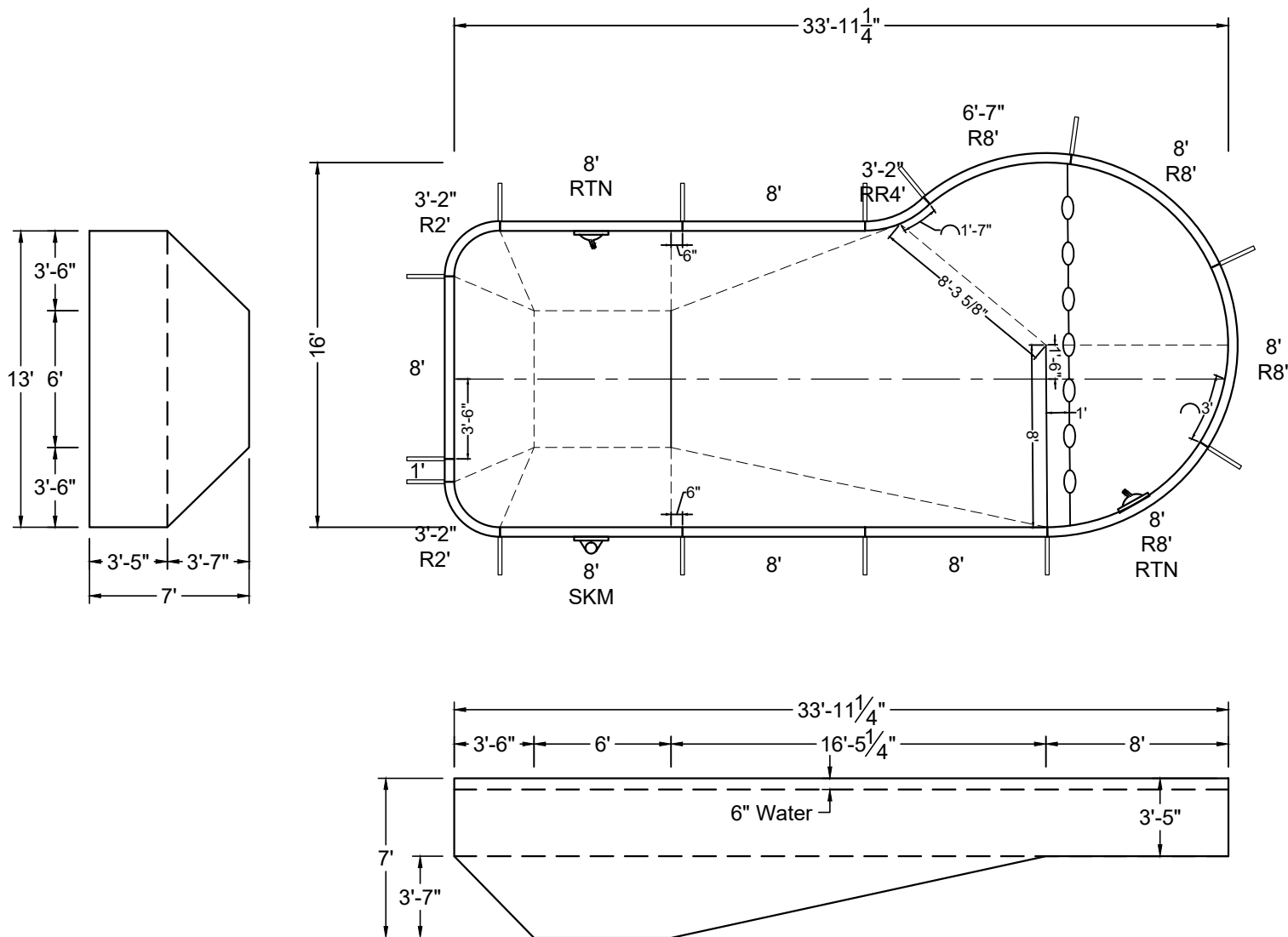
SHAPE : RIVIERA	SIZE : 13' X 33'-11"	HAND : LEFT	PANEL HEIGHT : 3'-6"	DRAWN BY : NM-BCC
DWG # : MN1634RI219	DATE : 1/25/2017	REVISION # : 01	KIT REF : MN1634RI219-L	B

ALL DIMENSIONS ARE FINISHED



NON-DIVING POOL
USE OF DIVING EQUIPMENT IS PROHIBITED

MEETS DEPTH AND SHAPE MINIMUM STANDARD ANSI/NSPI5-2003



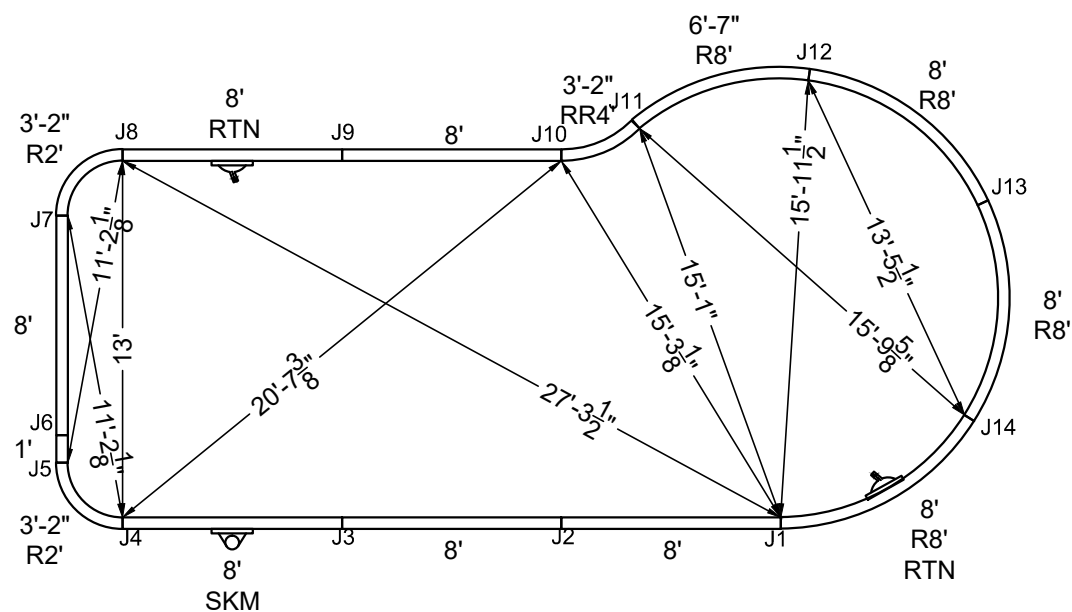
SHAPE : RIVIERA	SIZE : 13' X 33'-11"	HAND : RIGHT	PANEL HEIGHT : 3'-6"	PANEL TYPE : 5" TOP
PERIMETER : 89'-0 13/32"	VOLUME : 15,861 US GAL.	SURFACE AREA : 449.368 SQ. FT.	SCALE : N.T.S	DRAWN BY : NM-BCC
DWG # : MN1634RI219	DATE : 1/25/2017	REVISION # : 01	KIT REF : MN1634RI219-R	A



NON-DIVING POOL
USE OF DIVING EQUIPMENT IS PROHIBITED

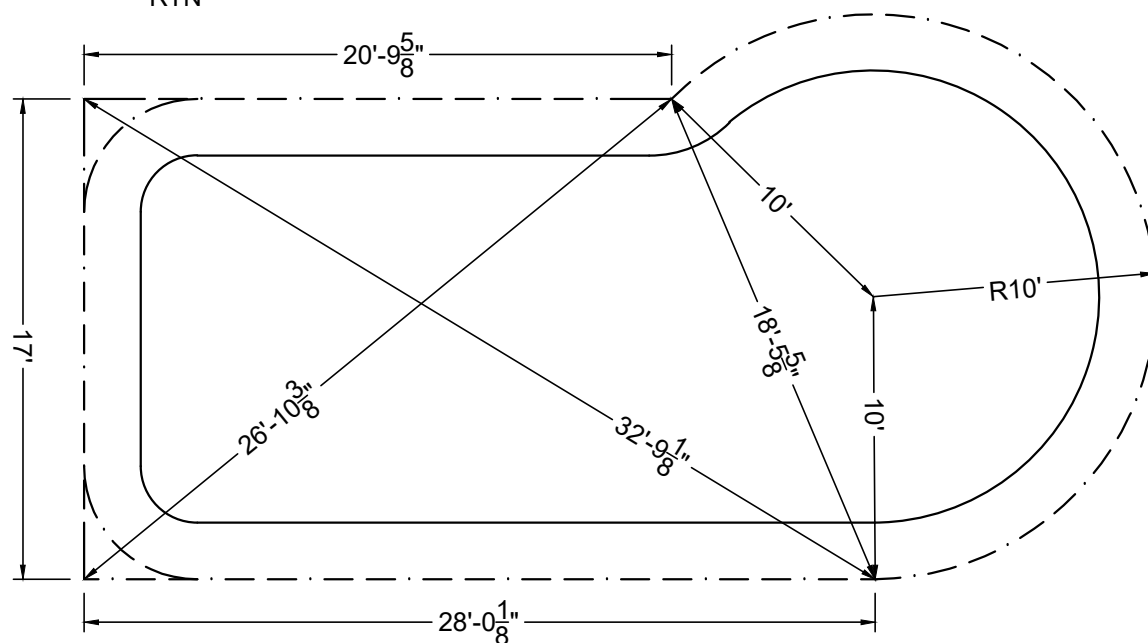
MEETS DEPTH AND SHAPE MINIMUM STANDARD ANSI/NSPI5-2003

ALL DIMENSIONS ARE FINISHED



STAKE OUT

STEEL CHECK



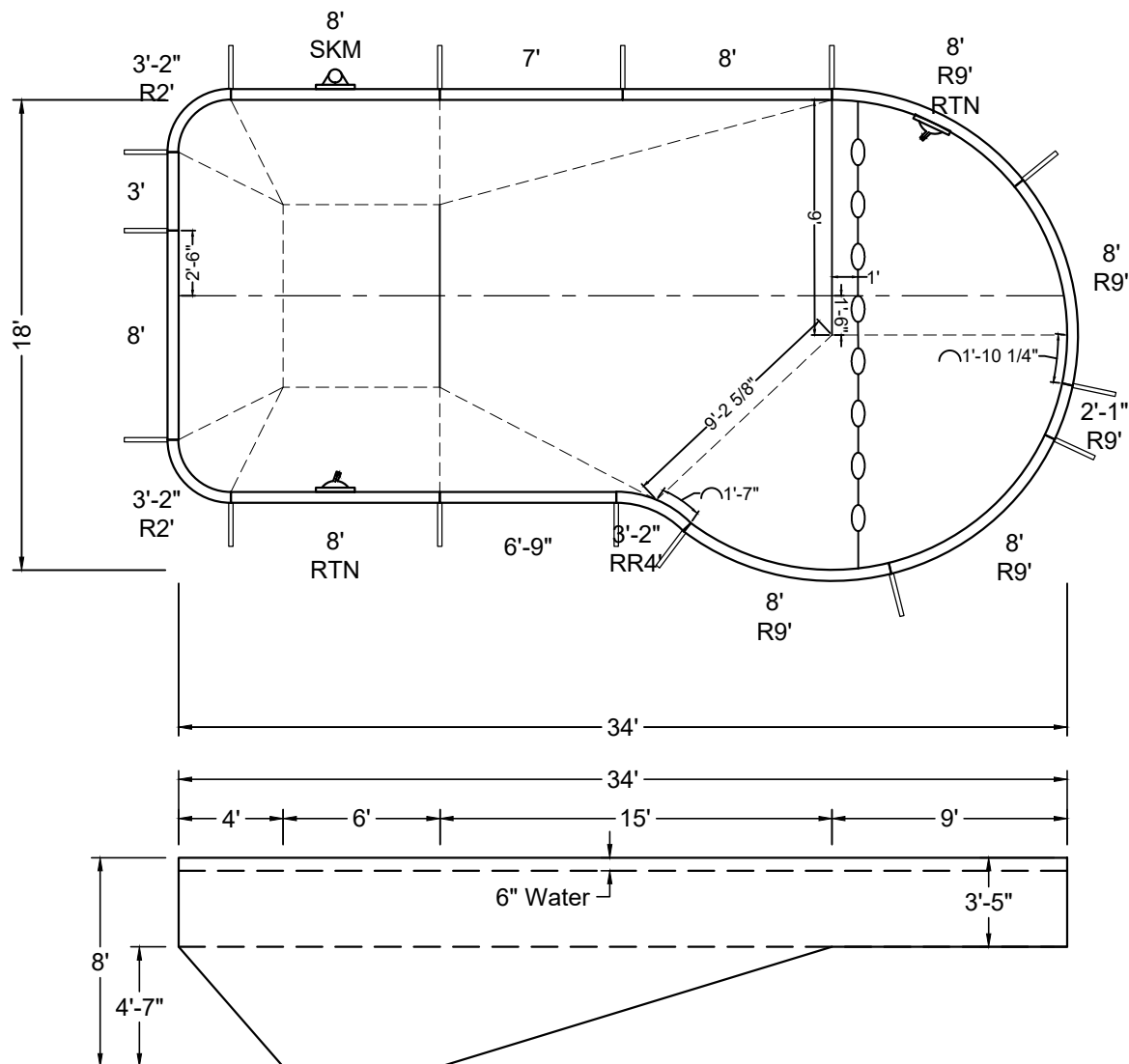
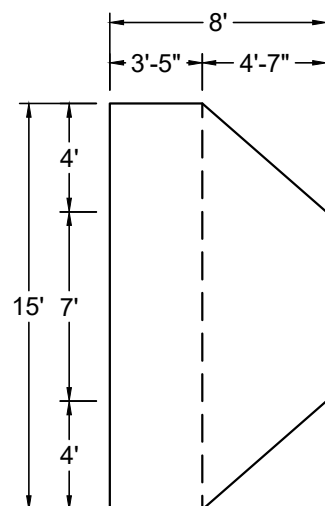
SHAPE: RIVIERA	SIZE: 13' X 33'-11"	HAND: RIGHT	PANEL HEIGHT: 3'-6"	DRAWN BY: NM-BCC
DWG #: MN1634RI219	DATE: 1/25/2017	REVISION #: 01	KIT REF: MN1634RI219-R	B



NON-DIVING POOL
USE OF DIVING EQUIPMENT IS PROHIBITED

MEETS DEPTH AND SHAPE MINIMUM STANDARD ANSI/NSPI5-2003

ALL DIMENSIONS ARE FINISHED



SHAPE : RIVIERA	SIZE : 15' X 34'	HAND : LEFT	PANEL HEIGHT : 3'-6"	PANEL TYPE : 5" TOP
PERIMETER : 92'-3 13/32"	VOLUME : 19,433 US GAL.	SURFACE AREA : 514.760 SQ. FT.	SCALE : N.T.S	DRAWN BY : NM-BCC
DWG # : MN1834RI219	DATE : 1/25/2017	REVISION # : 01	KIT REF : MN1834RI219-L	A



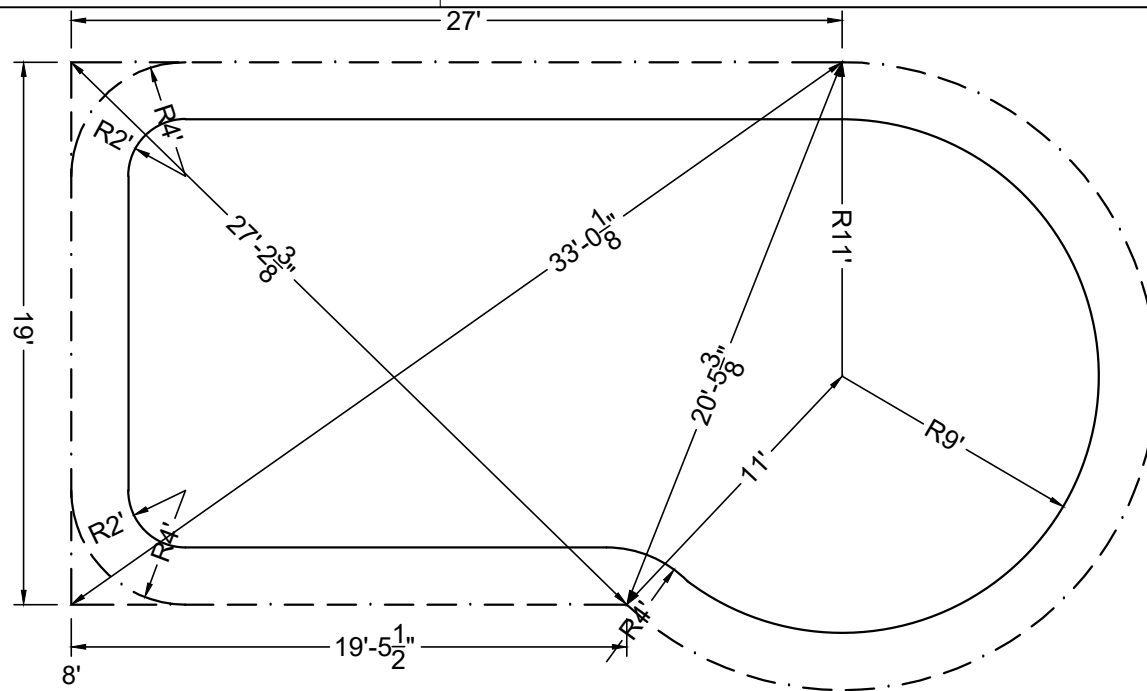
NON-DIVING POOL

USE OF DIVING EQUIPMENT IS PROHIBITED

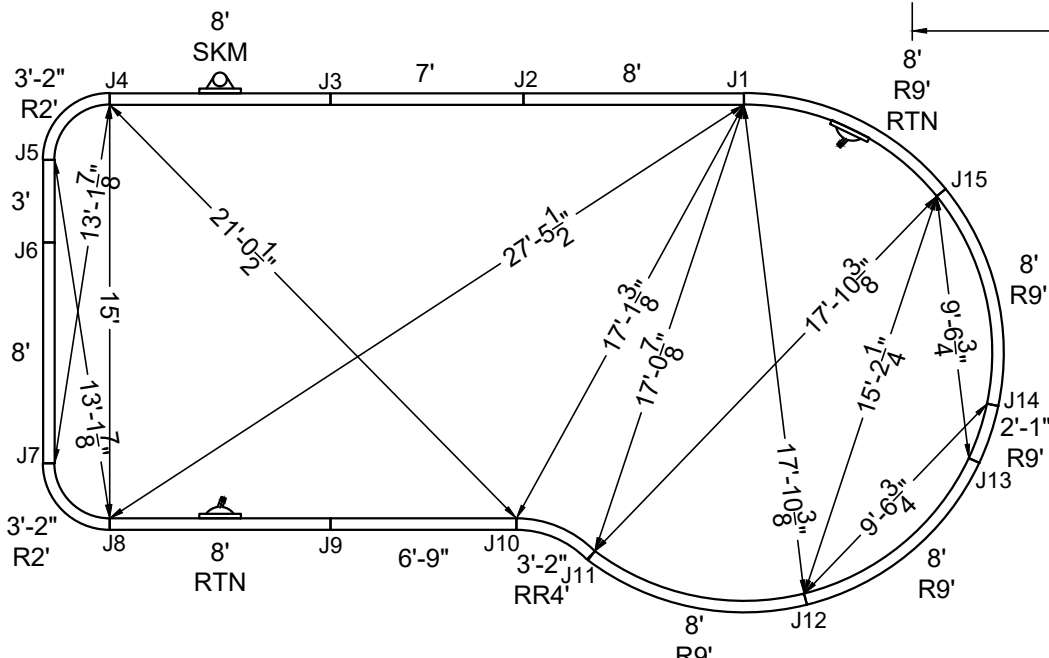
MEETS DEPTH AND SHAPE MINIMUM STANDARD ANSI/NSPI5-2003

ALL DIMENSIONS ARE FINISHED

STEEL CHECK



STAKE OUT



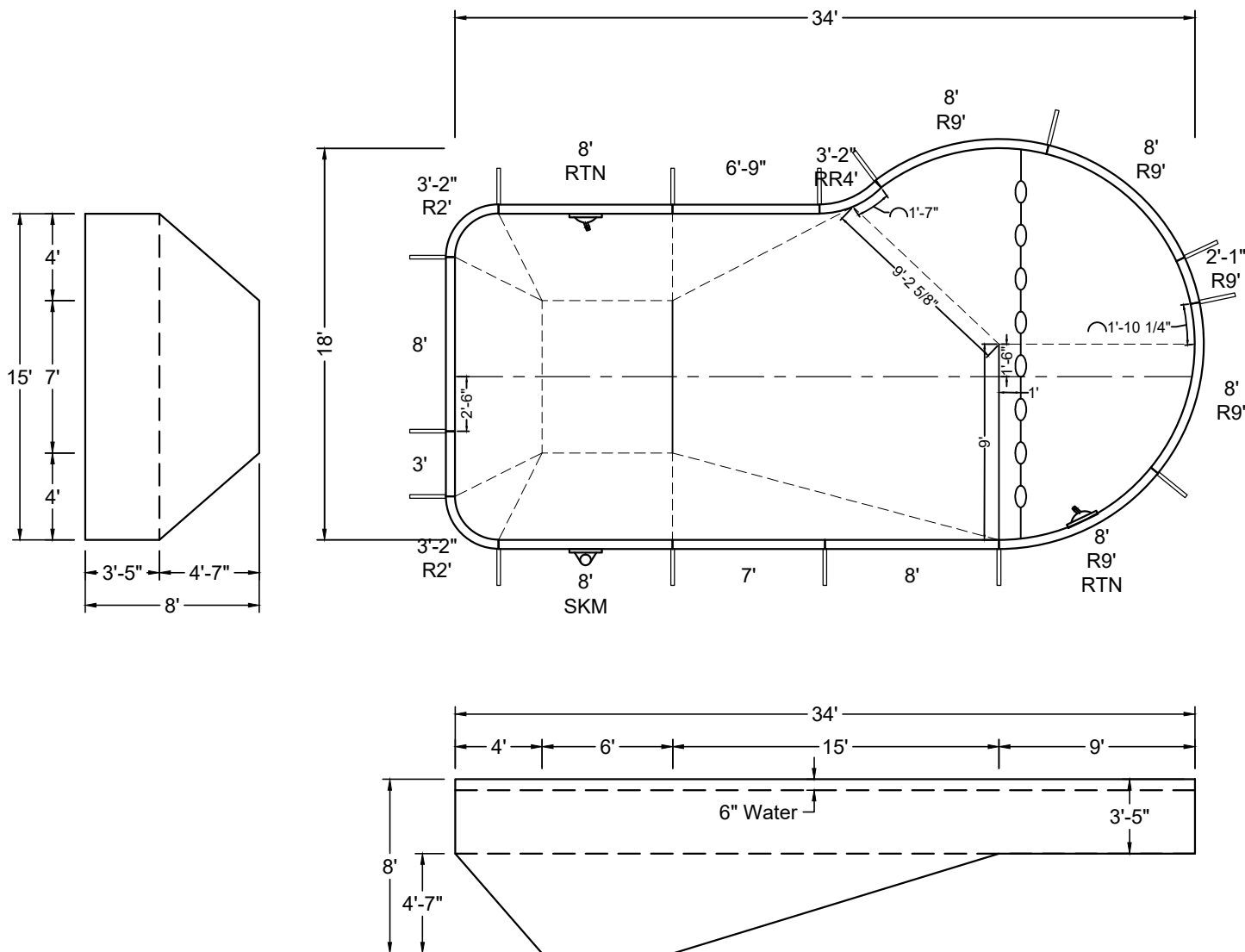
SHAPE : RIVIERA	SIZE : 15' X 34'	HAND : LEFT	PANEL HEIGHT : 3'-6"	DRAWN BY : NM-BCC
DWG # : MN1834RI219	DATE : 1/25/2017	REVISION # : 01	KIT REF : MN1834RI219-L	B



NON-DIVING POOL
USE OF DIVING EQUIPMENT IS PROHIBITED

MEETS DEPTH AND SHAPE MINIMUM STANDARD ANSI/NSPI5-2003

ALL DIMENSIONS ARE FINISHED



SHAPE : RIVIERA	SIZE : 15' X 34'	HAND : RIGHT	PANEL HEIGHT : 3'-6"	PANEL TYPE : 5" TOP
PERIMETER : 92'-3 13/32"	VOLUME : 19,433 US GAL.	SURFACE AREA : 514.760 SQ. FT.	SCALE : N.T.S	DRAWN BY : NM-BCC
DWG # : MN1834RI219	DATE : 1/25/2017	REVISION # : 01	KIT REF : MN1834RI219-R	A

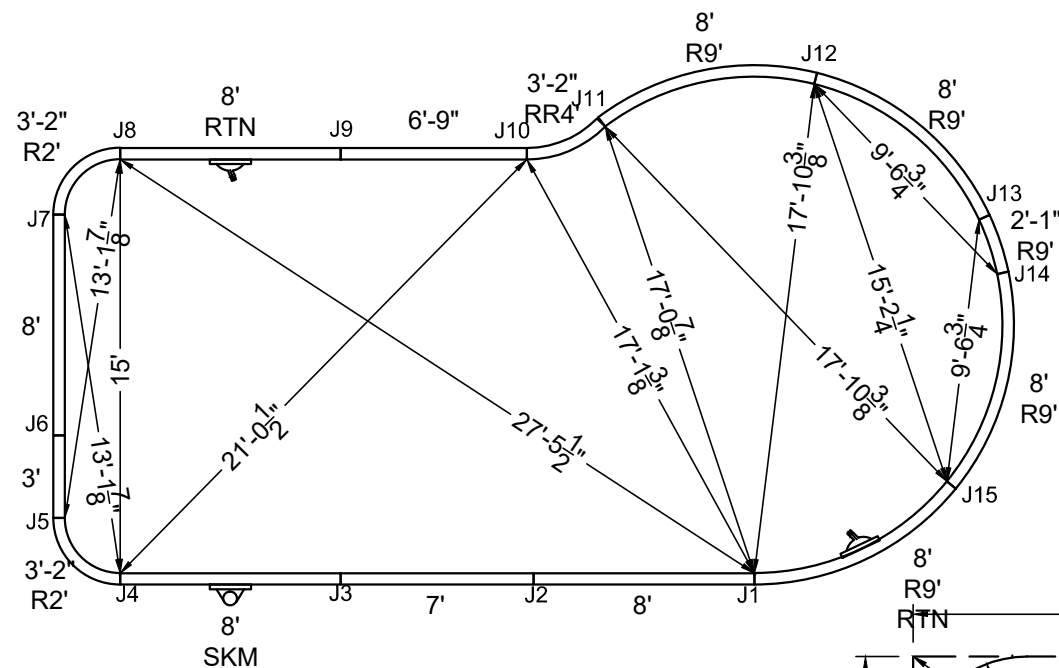


NON-DIVING POOL

USE OF DIVING EQUIPMENT IS PROHIBITED

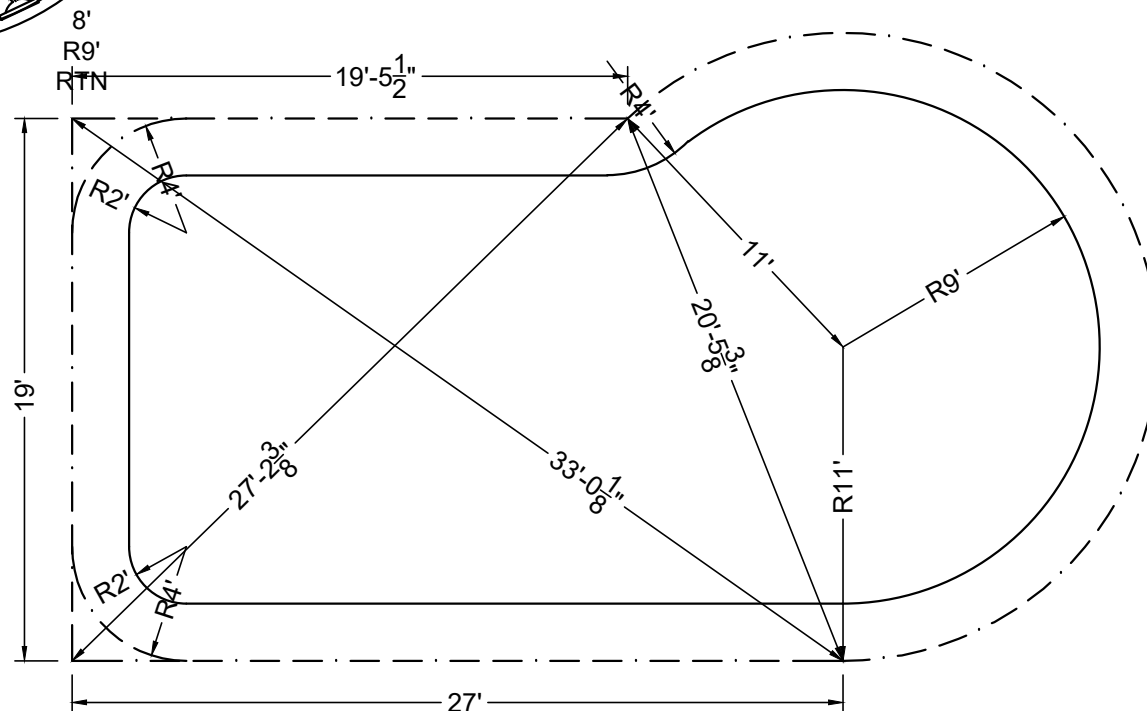
MEETS DEPTH AND SHAPE MINIMUM STANDARD ANSI/NSPI5-2003

ALL DIMENSIONS ARE FINISHED



STAKE OUT

STEEL CHECK



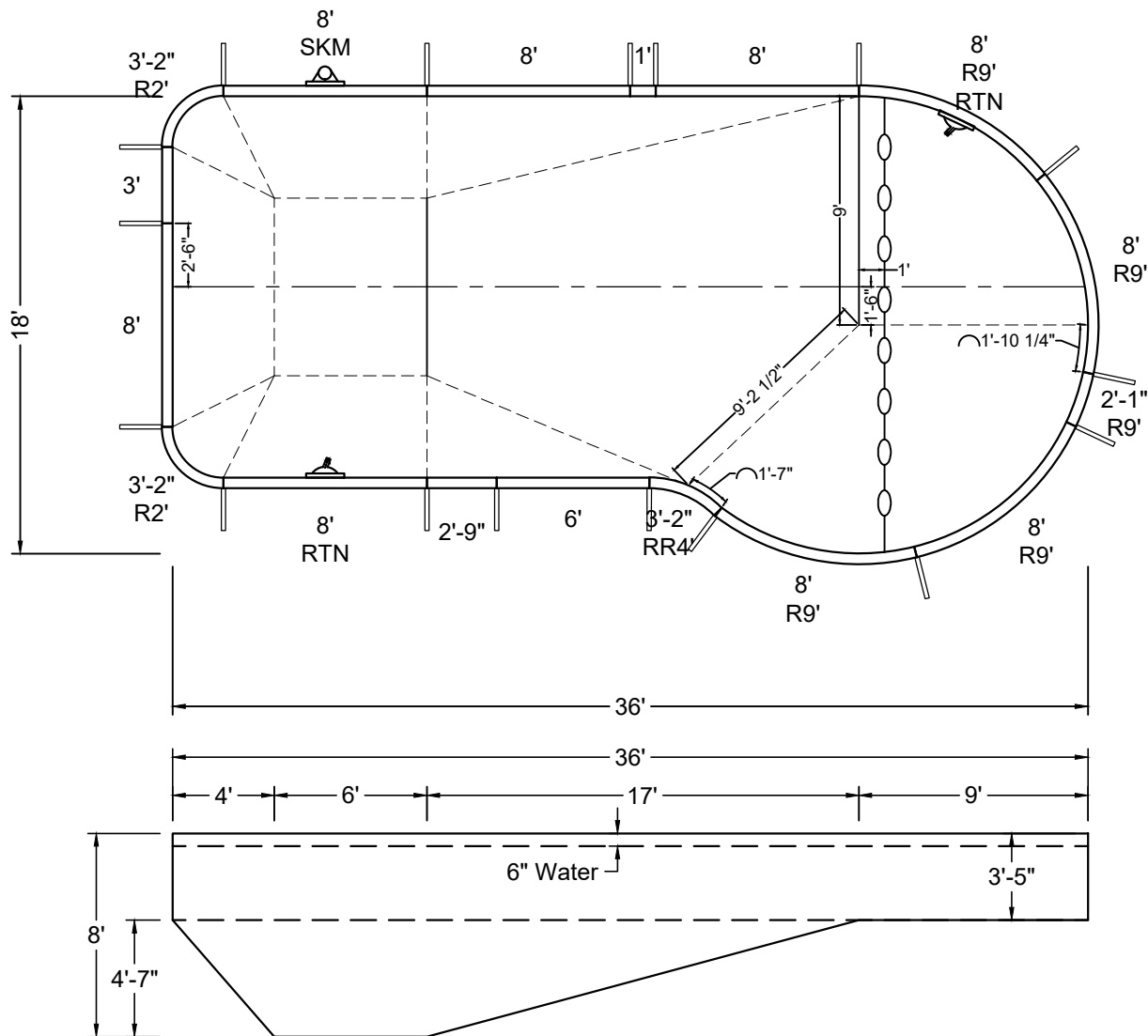
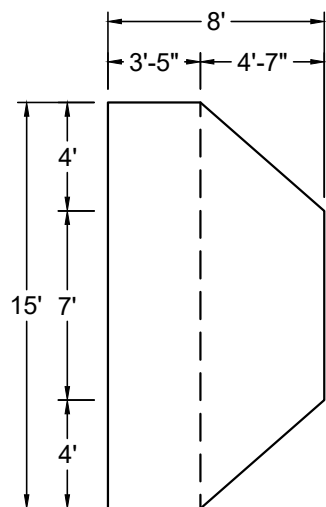
SHAPE : RIVIERA	SIZE : 15' X 34'	HAND : RIGHT	PANEL HEIGHT : 3'-6"	DRAWN BY : NM-BCC
DWG # : MN1834RI219	DATE : 1/25/2017	REVISION # : 01	KIT REF : MN1834RI219-R	B

ALL DIMENSIONS ARE FINISHED

DIVING / SLIDE EQUIPMENT DISCLAIMER:

THE BOTTOM CONFIGURATION SHOWN MEETS WITH THE CURRENT ISPSC MINIMUM STANDARDS FOR POOLS APPROVED FOR THE USE WITH MANUFACTURED DIVING EQUIPMENT. ALL DIVING EQUIPMENT MUST BE INSTALLED AND LOCATED IN ACCORDANCE WITH THE DIVING / SLIDE MANUFACTURER'S RECOMMENDATIONS. IF DIVING EQUIPMENT IS INSTALLED: PLEASE FOLLOW ALL THE DIVING / SLIDE EQUIPMENT MANUFACTURER'S INSTALLATION, USE AND SAFETY INSTRUCTIONS.

MEETS DEPTH AND SHAPE MINIMUM STANDARD ANSI/NSPI5-2003



SHAPE : RIVIERA	SIZE : 15' X 36'	HAND : LEFT	PANEL HEIGHT : 3'-6"	PANEL TYPE : 5" TOP
PERIMETER : 96'-3 13/32"	VOLUME : 20,623 US GAL.	SURFACE AREA : 544.760 SQ. FT.	SCALE : N.T.S	DRAWN BY : NM-BCC
DWG # : MN1836RI219	DATE : 1/25/2017	REVISION # : 01	KIT REF : MN1836RI219-L	A

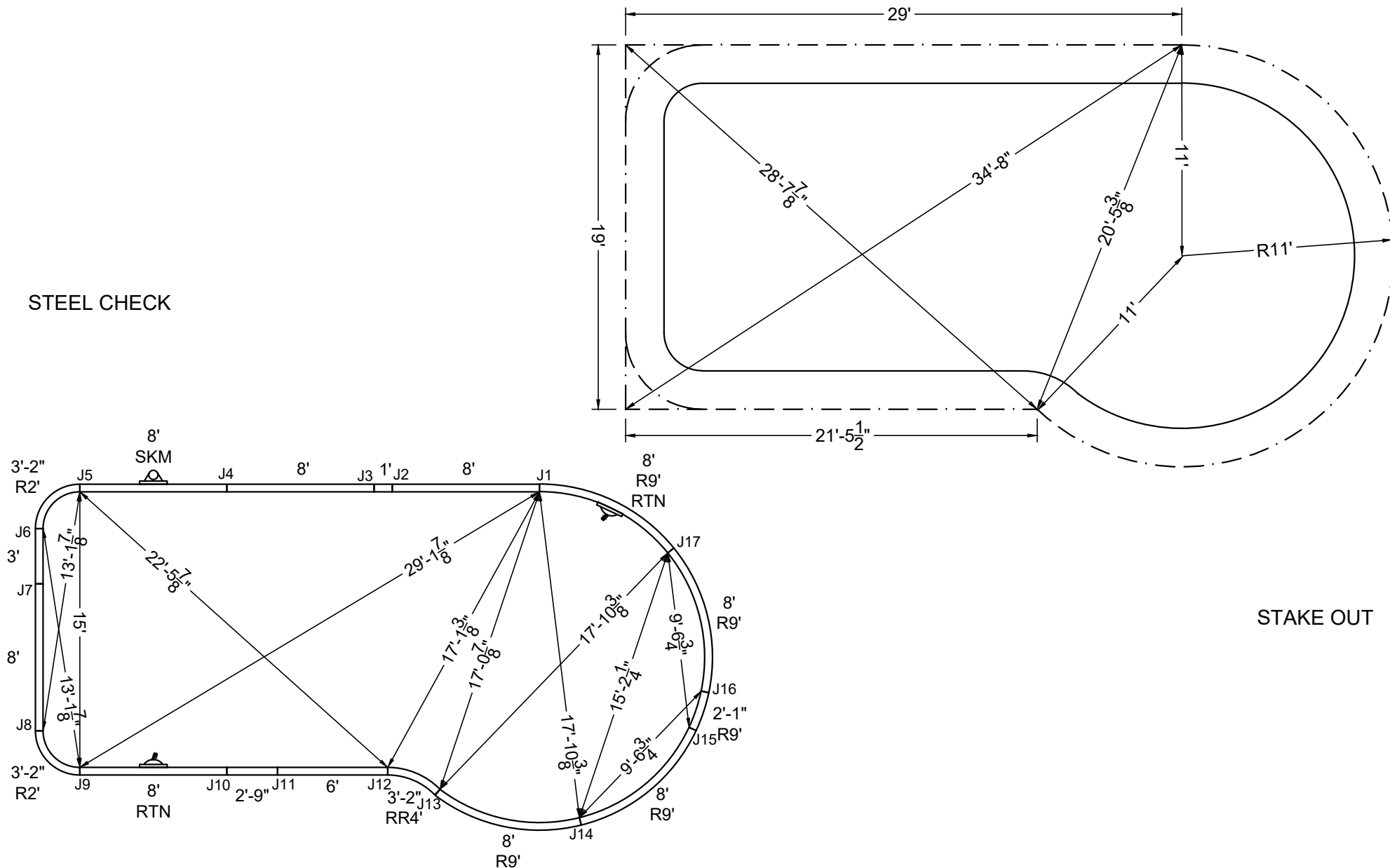
ALL DIMENSIONS ARE FINISHED

DIVING / SLIDE EQUIPMENT DISCLAIMER:

THE BOTTOM CONFIGURATION SHOWN MEETS WITH THE CURRENT ISPC MINIMUM STANDARDS FOR POOLS APPROVED FOR THE USE WITH MANUFACTURED DIVING EQUIPMENT. ALL DIVING EQUIPMENT MUST BE INSTALLED AND LOCATED IN ACCORDANCE WITH THE DIVING / SLIDE MANUFACTURER'S RECOMMENDATIONS. IF DIVING EQUIPMENT IS INSTALLED: PLEASE FOLLOW ALL THE DIVING / SLIDE EQUIPMENT MANUFACTURER'S INSTALLATION, USE AND SAFETY INSTRUCTIONS.

MEETS DEPTH AND SHAPE MINIMUM STANDARD ANSI/NSPI5-2003

STEEL CHECK



STAKE OUT

SHAPE: RIVIERA	SIZE: 15' X 36'	HAND: LEFT	PANEL HEIGHT: 3'-6"	DRAWN BY: NM-BCC
DWG #: MN1836RI219	DATE: 1/25/2017	REVISION #: 01	KIT REF: MN1836RI219-L	B

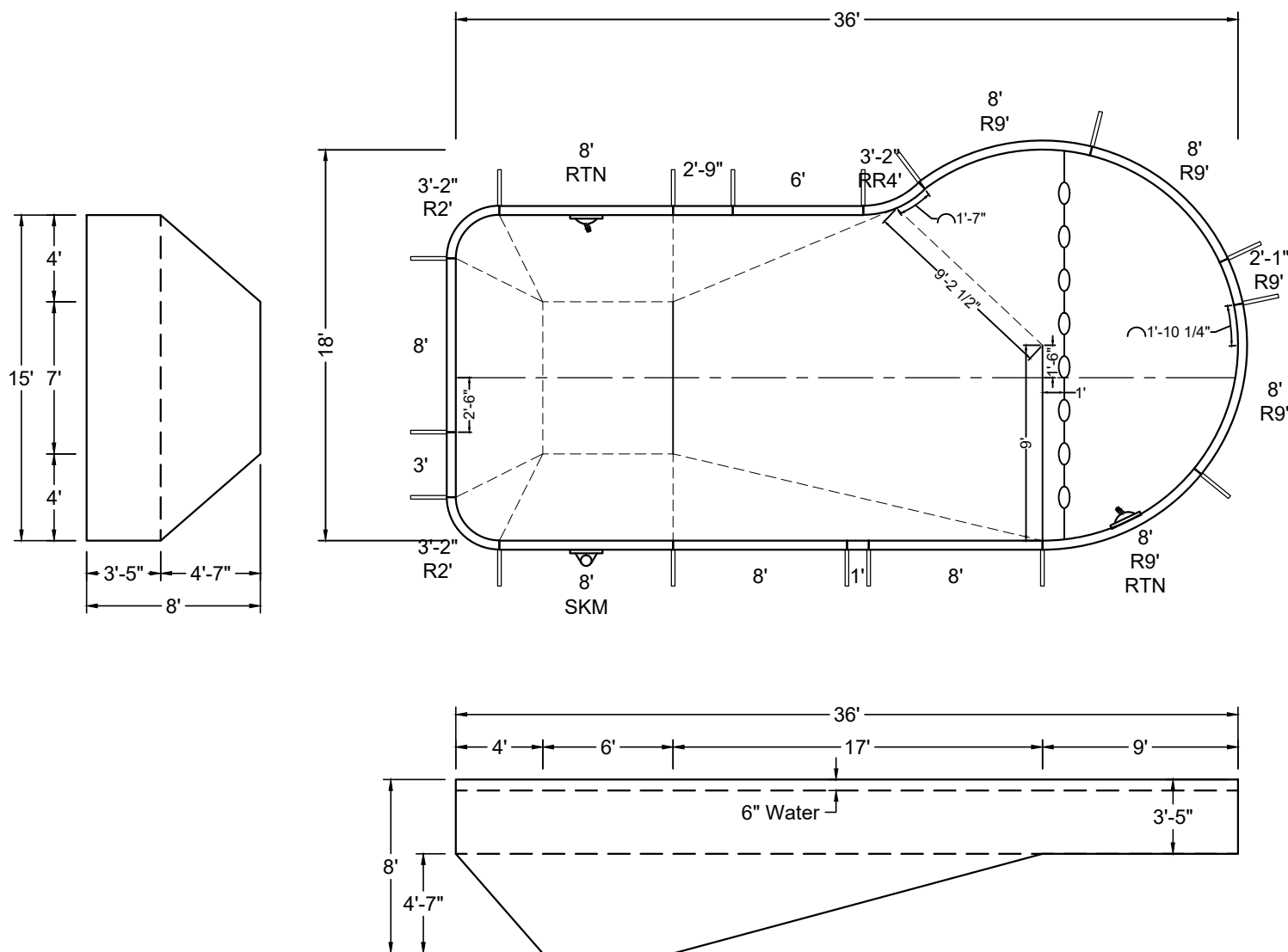


DIVING / SLIDE EQUIPMENT DISCLAIMER:

THE BOTTOM CONFIGURATION SHOWN MEETS WITH THE CURRENT ISPSC MINIMUM STANDARDS FOR POOLS APPROVED FOR THE USE WITH MANUFACTURED DIVING EQUIPMENT. ALL DIVING EQUIPMENT MUST BE INSTALLED AND LOCATED IN ACCORDANCE WITH THE DIVING / SLIDE MANUFACTURER'S RECOMMENDATIONS. IF DIVING EQUIPMENT IS INSTALLED: PLEASE FOLLOW ALL THE DIVING / SLIDE EQUIPMENT MANUFACTURER'S INSTALLATION, USE AND SAFETY INSTRUCTIONS.

MEETS DEPTH AND SHAPE MINIMUM STANDARD ANSI/NSPI5-2003

ALL DIMENSIONS ARE FINISHED



SHAPE : RIVIERA	SIZE : 15' X 36'	HAND : RIGHT	PANEL HEIGHT : 3'-6"	PANEL TYPE : 5" TOP
PERIMETER : 96'-3 13/32"	VOLUME : 20,623 US GAL.	SURFACE AREA : 544.760 SQ. FT.	SCALE : N.T.S	DRAWN BY : NM-BCC
DWG # : MN1836RI219	DATE : 1/25/2017	REVISION # : 01	KIT REF : MN1836RI219-R	A



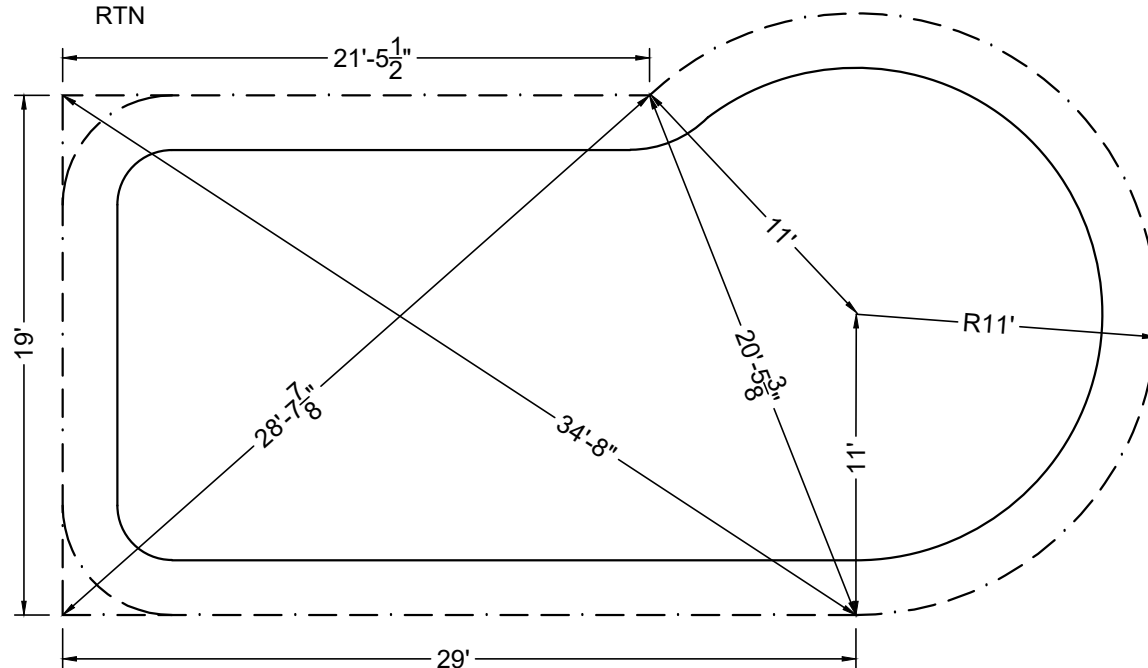
DIVING / SLIDE EQUIPMENT DISCLAIMER:

THE BOTTOM CONFIGURATION SHOWN MEETS WITH THE CURRENT IPSC MINIMUM STANDARDS FOR POOLS APPROVED FOR THE USE WITH MANUFACTURED DIVING EQUIPMENT. ALL DIVING EQUIPMENT MUST BE INSTALLED AND LOCATED IN ACCORDANCE WITH THE DIVING / SLIDE MANUFACTURER'S RECOMMENDATIONS. IF DIVING EQUIPMENT IS INSTALLED: PLEASE FOLLOW ALL THE DIVING / SLIDE EQUIPMENT MANUFACTURER'S INSTALLATION, USE AND SAFETY INSTRUCTIONS.

MEETS DEPTH AND SHAPE MINIMUM STANDARD ANSI/NSPI5-2003



STEEL CHECK



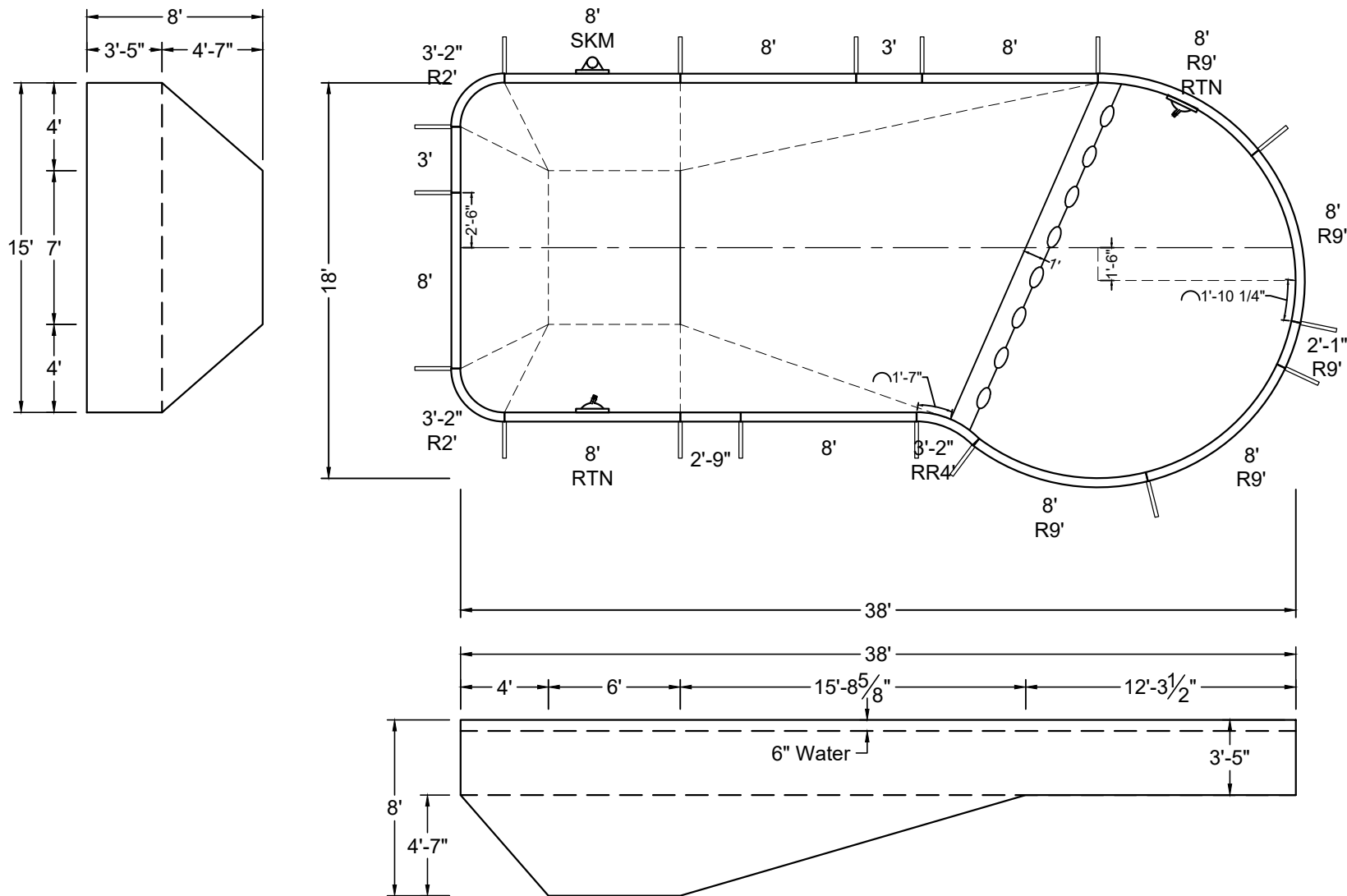
SHAPE : RIVIERA	SIZE : 15' X 36'	HAND : RIGHT	PANEL HEIGHT : 3'-6"	DRAWN BY : NM-BCC
DWG # : MN1836RI219	DATE : 1/25/2017	REVISION # : 01	KIT REF : MN1836RI219-R	B

ALL DIMENSIONS ARE FINISHED

DIVING / SLIDE EQUIPMENT DISCLAIMER:

THE BOTTOM CONFIGURATION SHOWN MEETS WITH THE CURRENT ISPSC MINIMUM STANDARDS FOR POOLS APPROVED FOR THE USE WITH MANUFACTURED DIVING EQUIPMENT. ALL DIVING EQUIPMENT MUST BE INSTALLED AND LOCATED IN ACCORDANCE WITH THE DIVING / SLIDE MANUFACTURER'S RECOMMENDATIONS. IF DIVING EQUIPMENT IS INSTALLED: PLEASE FOLLOW ALL THE DIVING / SLIDE EQUIPMENT MANUFACTURER'S INSTALLATION, USE AND SAFETY INSTRUCTIONS.

MEETS DEPTH AND SHAPE MINIMUM STANDARD ANSI/NSPI5-2003



SHAPE : RIVIERA	SIZE : 15' X 38'	HAND : LEFT	PANEL HEIGHT : 3'-6"	PANEL TYPE : 5" TOP
PERIMETER : 100'-3 13/32"	VOLUME : 21,118 US GAL.	SURFACE AREA : 574.760 SQ. FT.	SCALE : N.T.S	DRAWN BY : NM-BCC
DWG # : MN1838RI219	DATE : 1/25/2017	REVISION # : 01	KIT REF : MN1838RI219-L	A

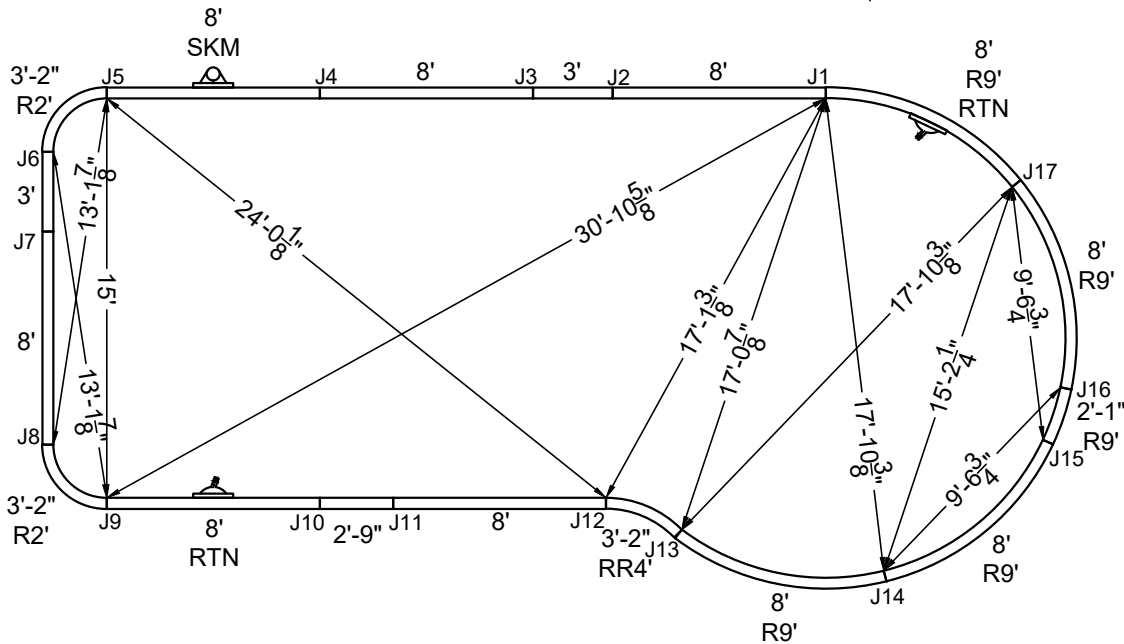
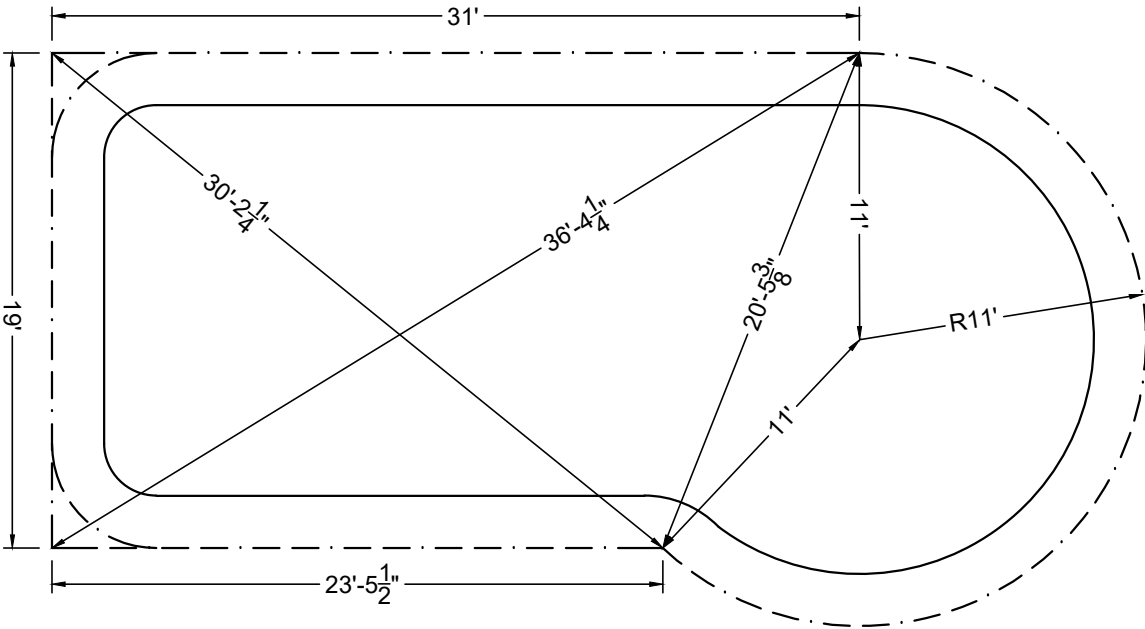


DIVING / SLIDE EQUIPMENT DISCLAIMER:

THE BOTTOM CONFIGURATION SHOWN MEETS WITH THE CURRENT IPSC MINIMUM STANDARDS FOR POOLS APPROVED FOR THE USE WITH MANUFACTURED DIVING EQUIPMENT. ALL DIVING EQUIPMENT MUST BE INSTALLED AND LOCATED IN ACCORDANCE WITH THE DIVING / SLIDE MANUFACTURER'S RECOMMENDATIONS. IF DIVING EQUIPMENT IS INSTALLED: PLEASE FOLLOW ALL THE DIVING / SLIDE EQUIPMENT MANUFACTURER'S INSTALLATION, USE AND SAFETY INSTRUCTIONS.

MEETS DEPTH AND SHAPE MINIMUM STANDARD ANSI/NSPI5-2003

STEEL CHECK



STAKE OUT

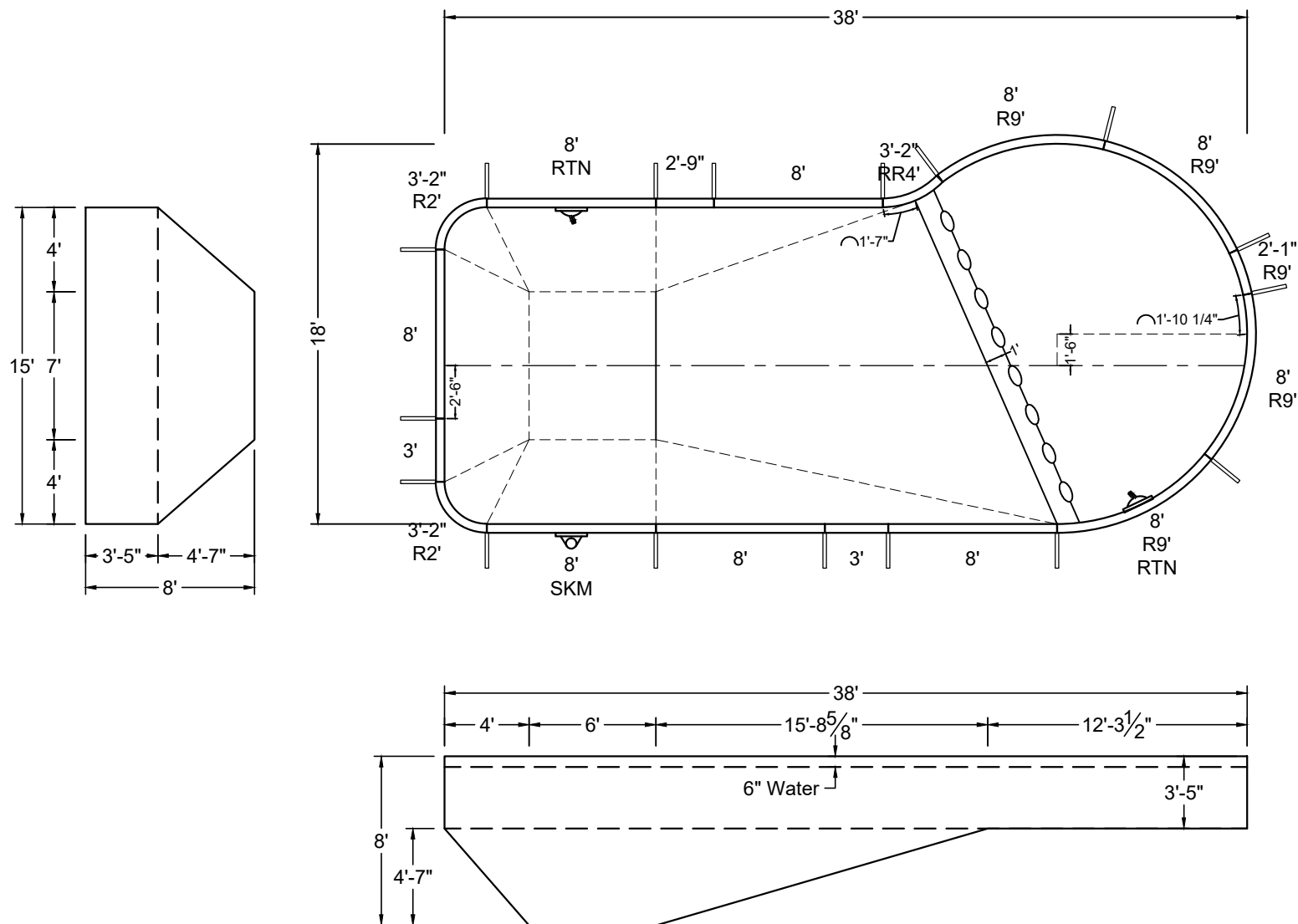
SHAPE : RIVIERA	SIZE : 15' X 38'	HAND : LEFT	PANEL HEIGHT : 3'-6"	DRAWN BY : NM-BCC
DWG # : MN1838RI219	DATE : 1/25/2017	REVISION # : 01	KIT REF : MN1838RI219-L	B

ALL DIMENSIONS ARE FINISHED

DIVING / SLIDE EQUIPMENT DISCLAIMER:

THE BOTTOM CONFIGURATION SHOWN MEETS WITH THE CURRENT ISPSA MINIMUM STANDARDS FOR POOLS APPROVED FOR THE USE WITH MANUFACTURED DIVING EQUIPMENT. ALL DIVING EQUIPMENT MUST BE INSTALLED AND LOCATED IN ACCORDANCE WITH THE DIVING / SLIDE MANUFACTURER'S RECOMMENDATIONS. IF DIVING EQUIPMENT IS INSTALLED: PLEASE FOLLOW ALL THE DIVING / SLIDE EQUIPMENT MANUFACTURER'S INSTALLATION, USE AND SAFETY INSTRUCTIONS.

MEETS DEPTH AND SHAPE MINIMUM STANDARD ANSI/NSPI-2003



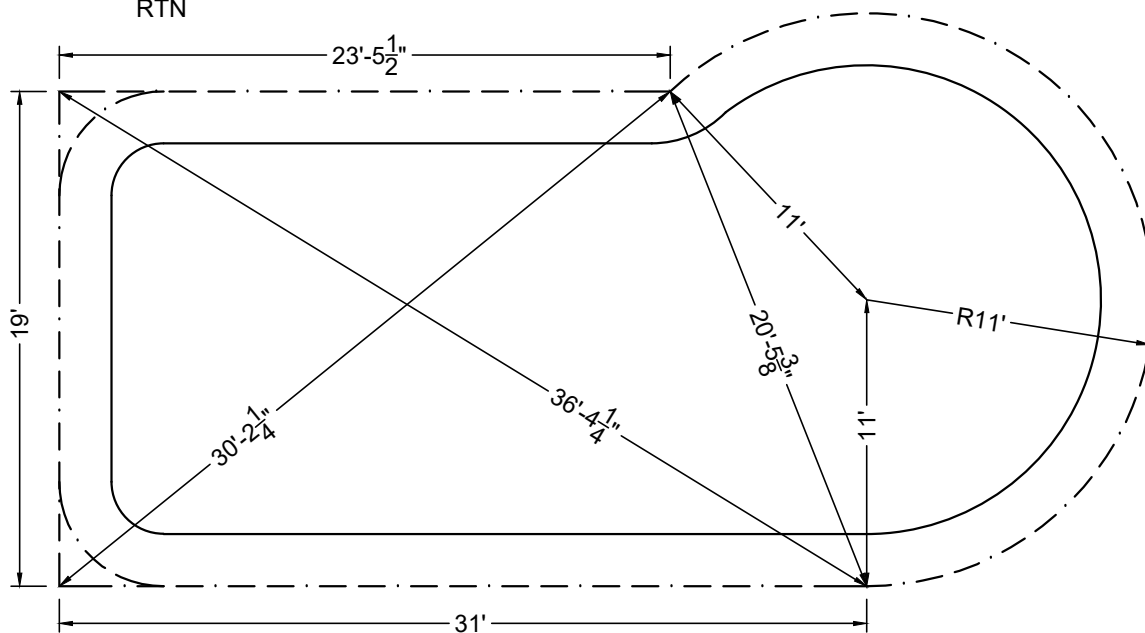
SHAPE : RIVIERA	SIZE : 15' X 38'	HAND : RIGHT	PANEL HEIGHT : 3'-6"	PANEL TYPE : 5" TOP
PERIMETER : 100'-3 13/32"	VOLUME : 21,118 US GAL.	SURFACE AREA : 574.760 SQ. FT.	SCALE : N.T.S	DRAWN BY : NM-BCC
DWG # : MN1838RI219	DATE : 1/25/2017	REVISION # : 01	KIT REF : MN1838RI219-R	A



DIVING / SLIDE EQUIPMENT DISCLAIMER:

THE BOTTOM CONFIGURATION SHOWN MEETS WITH THE CURRENT IPSC MINIMUM STANDARDS FOR POOLS APPROVED FOR THE USE WITH MANUFACTURED DIVING EQUIPMENT. ALL DIVING EQUIPMENT MUST BE INSTALLED AND LOCATED IN ACCORDANCE WITH THE DIVING / SLIDE MANUFACTURER'S RECOMMENDATIONS. IF DIVING EQUIPMENT IS INSTALLED: PLEASE FOLLOW ALL THE DIVING / SLIDE EQUIPMENT MANUFACTURER'S INSTALLATION, USE AND SAFETY INSTRUCTIONS.

MEETS DEPTH AND SHAPE MINIMUM STANDARD ANSI/NSPI5-2003



DRAWN BY :	NM-BCC
------------	--------

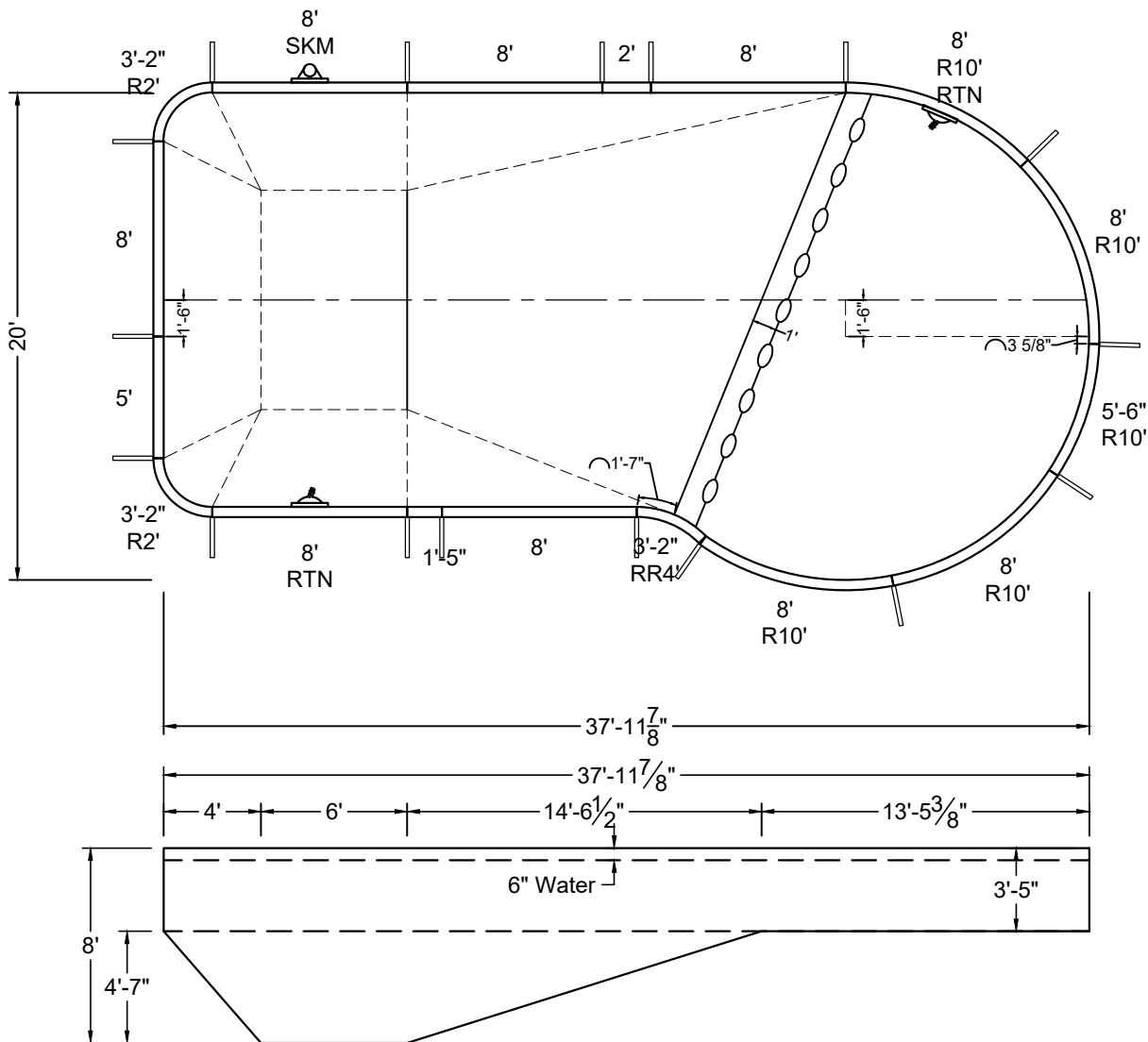
B



DIVING / SLIDE EQUIPMENT DISCLAIMER:

THE BOTTOM CONFIGURATION SHOWN MEETS WITH THE CURRENT ISPSC MINIMUM STANDARDS FOR POOLS APPROVED FOR THE USE WITH MANUFACTURED DIVING EQUIPMENT. ALL DIVING EQUIPMENT MUST BE INSTALLED AND LOCATED IN ACCORDANCE WITH THE DIVING / SLIDE MANUFACTURER'S RECOMMENDATIONS. IF DIVING EQUIPMENT IS INSTALLED: PLEASE FOLLOW ALL THE DIVING / SLIDE EQUIPMENT MANUFACTURER'S INSTALLATION, USE AND SAFETY INSTRUCTIONS.

MEETS DEPTH AND SHAPE MINIMUM STANDARD ANSI/NSPI5-2003



SHAPE : RIVIERA	SIZE : 17' X 38'	HAND : LEFT	PANEL HEIGHT : 3'-6"	PANEL TYPE : 5" TOP
PERIMETER : 103'-4 13/32"	VOLUME : 23,740 US GAL.	SURFACE AREA : 646.064 SQ. FT.	SCALE : N.T.S	DRAWN BY : NM-BCC
DWG # : MN2038RI219	DATE : 1/25/2017	REVISION # : 01	KIT REF : MN2038RI219-L	A



MEGNA
POOLS

Magna Plastic Packaging Corp.

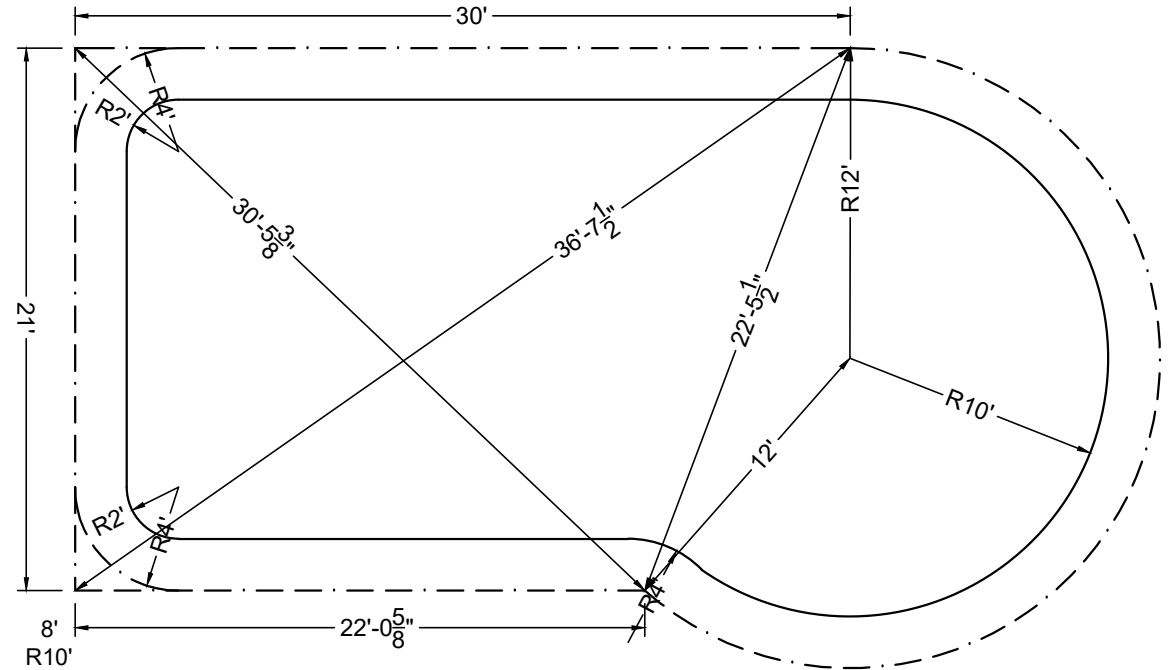
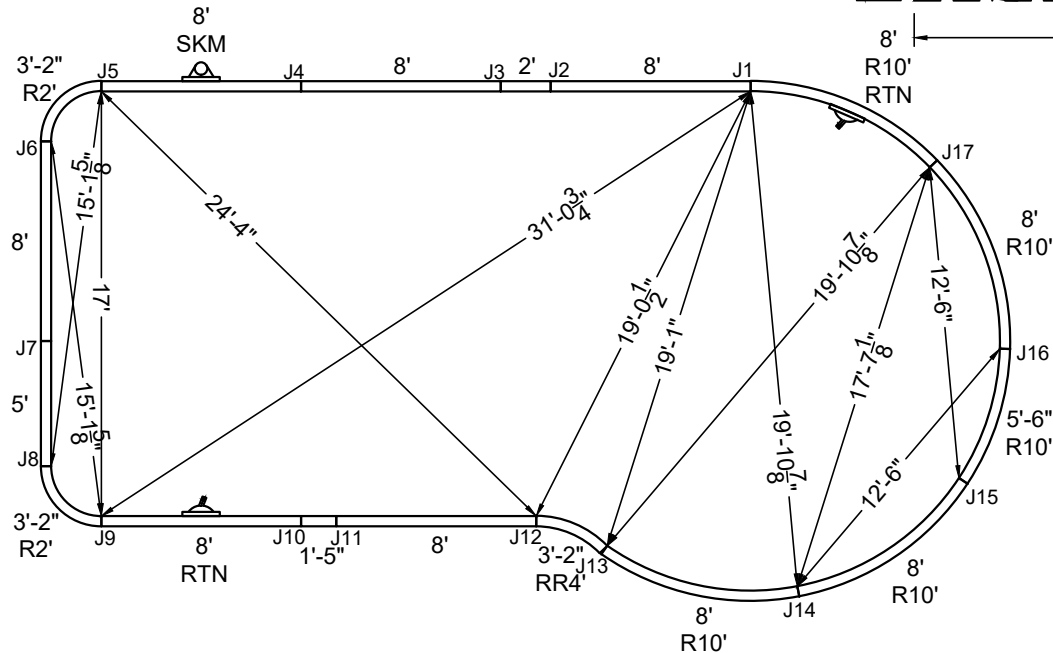
DIVING / SLIDE EQUIPMENT DISCLAIMER:

THE BOTTOM CONFIGURATION SHOWN MEETS WITH THE CURRENT ISPC MINIMUM STANDARDS FOR POOLS APPROVED FOR THE USE WITH MANUFACTURED DIVING EQUIPMENT. ALL DIVING EQUIPMENT MUST BE INSTALLED AND LOCATED IN ACCORDANCE WITH THE DIVING / SLIDE MANUFACTURER'S RECOMMENDATIONS. IF DIVING EQUIPMENT IS INSTALLED: PLEASE FOLLOW ALL THE DIVING / SLIDE EQUIPMENT MANUFACTURER'S INSTALLATION, USE AND SAFETY INSTRUCTIONS.

MEETS DEPTH AND SHAPE MINIMUM STANDARD ANSI/NSPI5-2003

ALL DIMENSIONS ARE FINISHED

STEEL CHECK



STAKE OUT

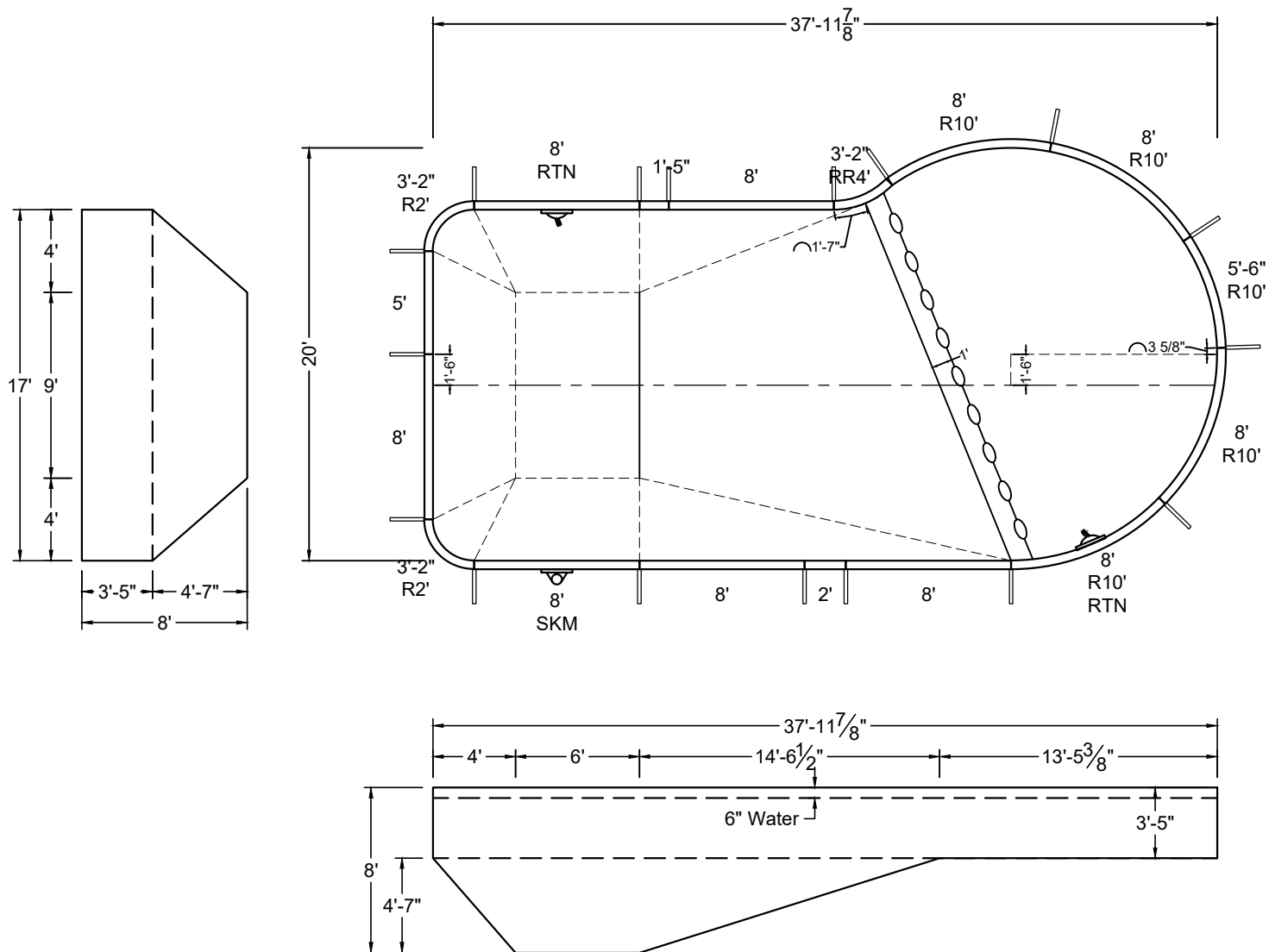
SHAPE : RIVIERA	SIZE : 17' X 38'	HAND : LEFT	PANEL HEIGHT : 3'-6"	DRAWN BY : NM-BCC
DWG # : MN2038RI219	DATE : 1/25/2017	REVISION # : 01	KIT REF : MN2038RI219-L	B

ALL DIMENSIONS ARE FINISHED

DIVING / SLIDE EQUIPMENT DISCLAIMER:

THE BOTTOM CONFIGURATION SHOWN MEETS WITH THE CURRENT ISPSC MINIMUM STANDARDS FOR POOLS APPROVED FOR THE USE WITH MANUFACTURED DIVING EQUIPMENT. ALL DIVING EQUIPMENT MUST BE INSTALLED AND LOCATED IN ACCORDANCE WITH THE DIVING / SLIDE MANUFACTURER'S RECOMMENDATIONS. IF DIVING EQUIPMENT IS INSTALLED: PLEASE FOLLOW ALL THE DIVING / SLIDE EQUIPMENT MANUFACTURER'S INSTALLATION, USE AND SAFETY INSTRUCTIONS.

MEETS DEPTH AND SHAPE MINIMUM STANDARD ANSI/NSPI5-2003



SHAPE: RIVIERA	SIZE: 17' X 38'	HAND: RIGHT	PANEL HEIGHT: 3'-6"	PANEL TYPE: 5" TOP
PERIMETER: 103'-4 13/32"	VOLUME: 23,740 US GAL.	SURFACE AREA: 646.064 SQ. FT.	SCALE: N.T.S	DRAWN BY: NM-BCC
DWG #: MN2038RI219	DATE: 1/25/2017	REVISION #: 01	KIT REF: MN2038RI219-R	A



DIVING / SLIDE EQUIPMENT DISCLAIMER:

THE BOTTOM CONFIGURATION SHOWN MEETS WITH THE CURRENT IPSPC MINIMUM STANDARDS FOR POOLS APPROVED FOR THE USE WITH MANUFACTURED DIVING EQUIPMENT. ALL DIVING EQUIPMENT MUST BE INSTALLED AND LOCATED IN ACCORDANCE WITH THE DIVING / SLIDE MANUFACTURER'S RECOMMENDATIONS. IF DIVING EQUIPMENT IS INSTALLED: PLEASE FOLLOW ALL THE DIVING / SLIDE EQUIPMENT MANUFACTURER'S INSTALLATION, USE AND SAFETY INSTRUCTIONS.

MEETS DEPTH AND SHAPE MINIMUM STANDARD ANSI/NSPI5-2003



STEEL CHECK

SHAPE : RIVIERA	SIZE : 17' X 38'	HAND : RIGHT	PANEL HEIGHT : 3'-6"	DRAWN BY : NM-BCC
DWG # : MN2038RI219	DATE : 1/25/2017	REVISION # : 01	KIT REF : MN2038RI219-R	B





Mega Plastic Packaging Corp.

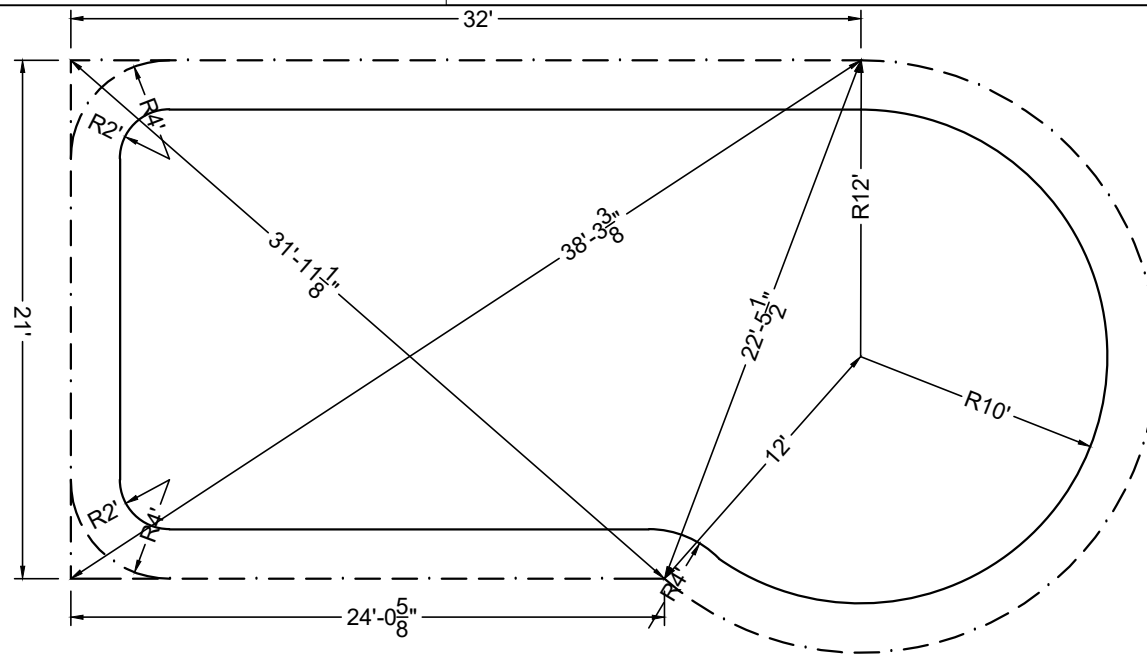
DIVING / SLIDE EQUIPMENT DISCLAIMER:

THE BOTTOM CONFIGURATION SHOWN MEETS WITH THE CURRENT IPSC MINIMUM STANDARDS FOR POOLS APPROVED FOR THE USE WITH MANUFACTURED DIVING EQUIPMENT. ALL DIVING EQUIPMENT MUST BE INSTALLED AND LOCATED IN ACCORDANCE WITH THE DIVING / SLIDE MANUFACTURER'S RECOMMENDATIONS. IF DIVING EQUIPMENT IS INSTALLED: PLEASE FOLLOW ALL THE DIVING / SLIDE EQUIPMENT MANUFACTURER'S INSTALLATION, USE AND SAFETY INSTRUCTIONS.

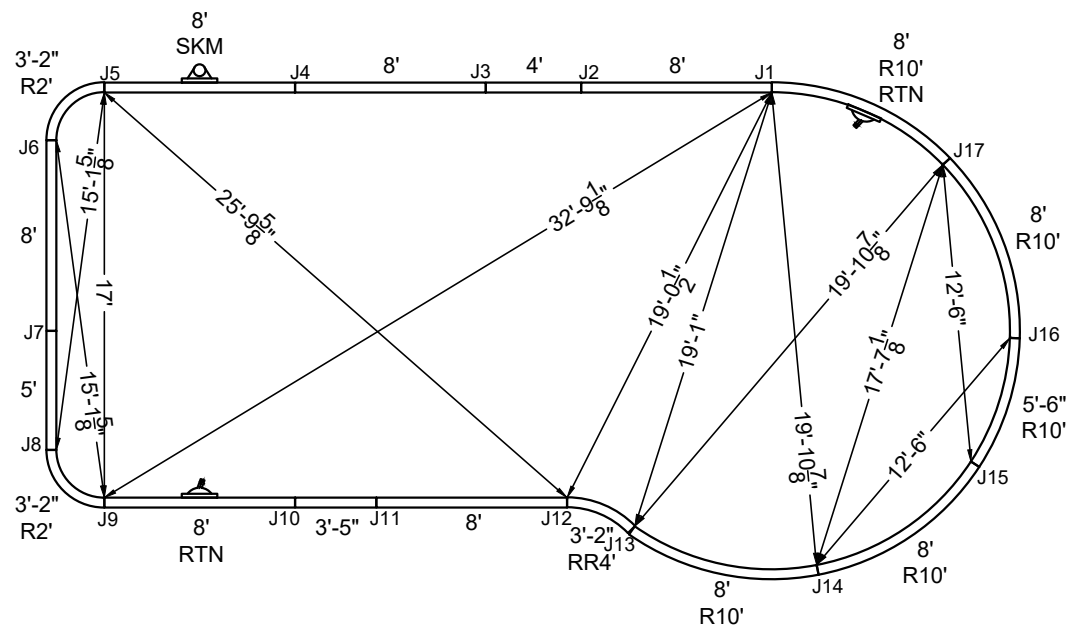
MEETS DEPTH AND SHAPE MINIMUM STANDARD ANSI/NSPI5-2003

ALL DIMENSIONS ARE FINISHED

STEEL CHECK



STAKE OUT



SHAPE : RIVIERA	SIZE : 17' X 40'	HAND : LEFT	PANEL HEIGHT : 3'-6"	DRAWN BY : NM-BCC
DWG # : MN2040RI219	DATE : 1/25/2017	REVISION # : 01	KIT REF : MN2040RI219-L	B

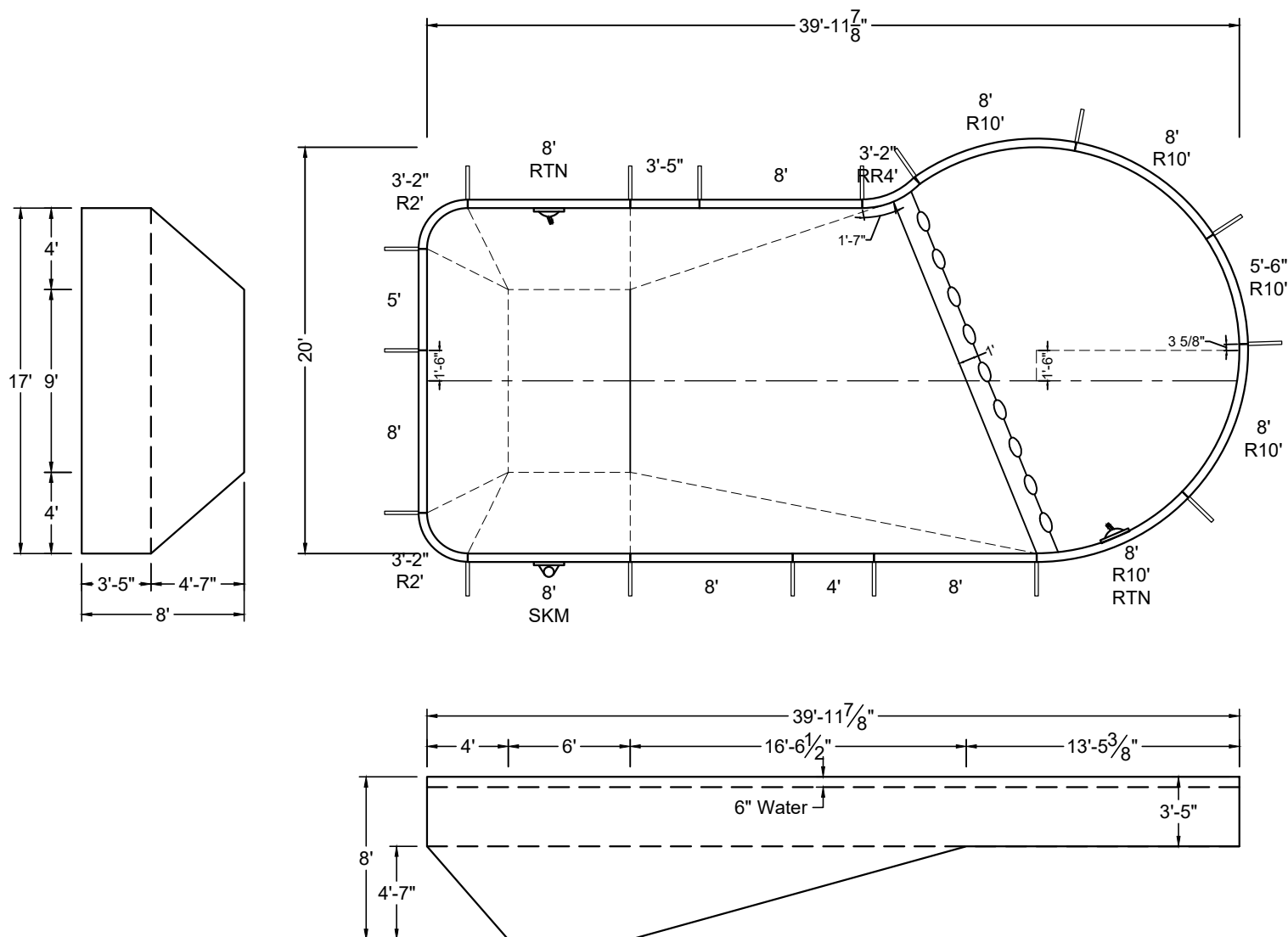


DIVING / SLIDE EQUIPMENT DISCLAIMER:

THE BOTTOM CONFIGURATION SHOWN MEETS WITH THE CURRENT ISPSC MINIMUM STANDARDS FOR POOLS APPROVED FOR THE USE WITH MANUFACTURED DIVING EQUIPMENT. ALL DIVING EQUIPMENT MUST BE INSTALLED AND LOCATED IN ACCORDANCE WITH THE DIVING / SLIDE MANUFACTURER'S RECOMMENDATIONS. IF DIVING EQUIPMENT IS INSTALLED: PLEASE FOLLOW ALL THE DIVING / SLIDE EQUIPMENT MANUFACTURER'S INSTALLATION, USE AND SAFETY INSTRUCTIONS.

MEETS DEPTH AND SHAPE MINIMUM STANDARD ANSI/NSPI5-2003

ALL DIMENSIONS ARE FINISHED



SHAPE : RIVIERA	SIZE : 17' X 40'	HAND : RIGHT	PANEL HEIGHT : 3'-6"	PANEL TYPE : 5" TOP
PERIMETER : 107'-4 13/32"	VOLUME : 25,101 US GAL.	SURFACE AREA : 680.064 SQ. FT.	SCALE : N.T.S	DRAWN BY : NM-BCC
DWG # : MN2040RI219	DATE : 1/25/2017	REVISION # : 01	KIT REF : MN2040RI219-R	A



MEGNA
POOLS

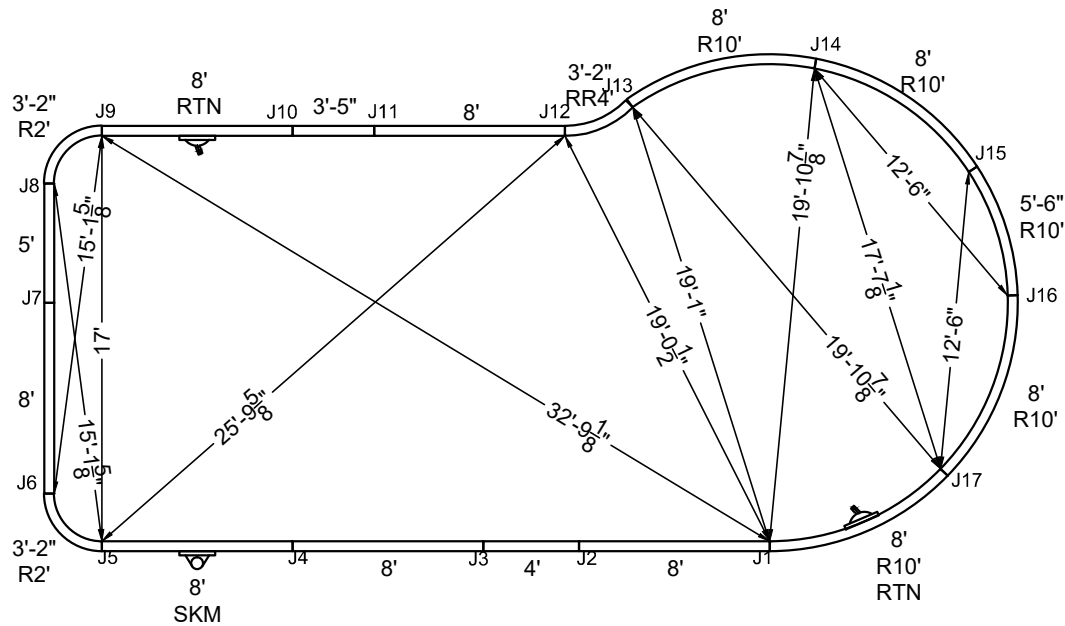
Megna Plastic Packaging Corp.

DIVING / SLIDE EQUIPMENT DISCLAIMER:

THE BOTTOM CONFIGURATION SHOWN MEETS WITH THE CURRENT ISPS MINIMUM STANDARDS FOR POOLS APPROVED FOR THE USE WITH MANUFACTURED DIVING EQUIPMENT. ALL DIVING EQUIPMENT MUST BE INSTALLED AND LOCATED IN ACCORDANCE WITH THE DIVING / SLIDE MANUFACTURER'S RECOMMENDATIONS. IF DIVING EQUIPMENT IS INSTALLED: PLEASE FOLLOW ALL THE DIVING / SLIDE EQUIPMENT MANUFACTURER'S INSTALLATION, USE AND SAFETY INSTRUCTIONS.

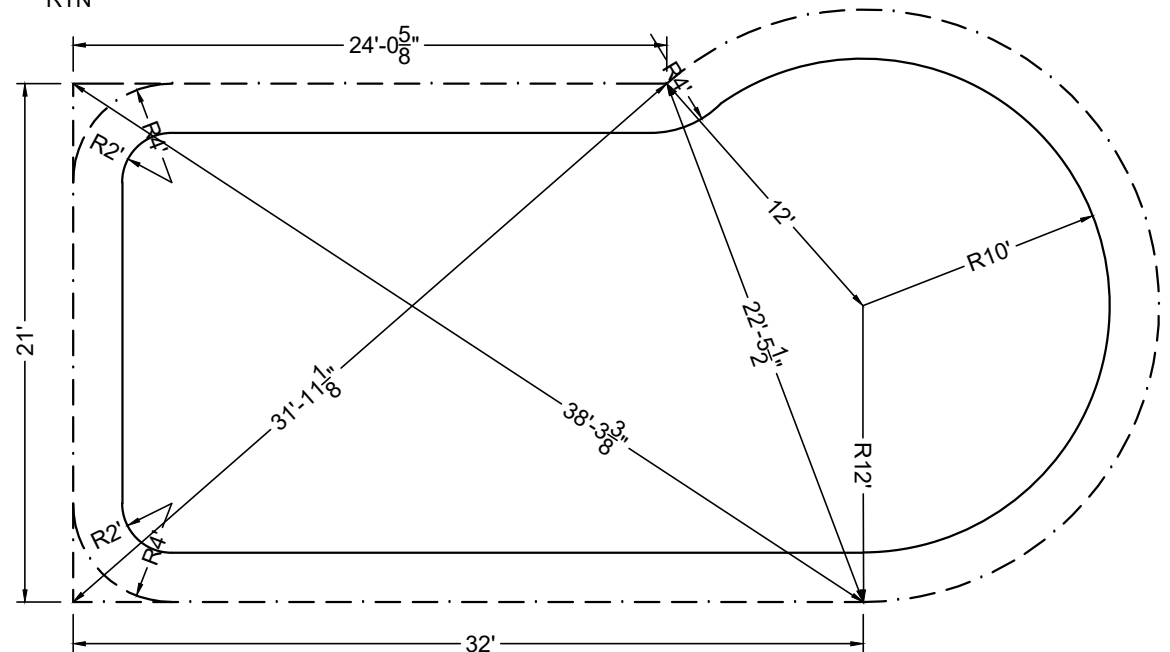
MEETS DEPTH AND SHAPE MINIMUM STANDARD ANSI/NSPI-2003

ALL DIMENSIONS ARE FINISHED



STAKE OUT

STEEL CHECK



SHAPE : RIVIERA	SIZE : 17' X 40'	HAND : RIGHT	PANEL HEIGHT : 3'-6"	DRAWN BY : NM-BCC
DWG # : MN2040RI219	DATE : 1/25/2017	REVISION # : 01	KIT REF : MN2040RI219-R	B