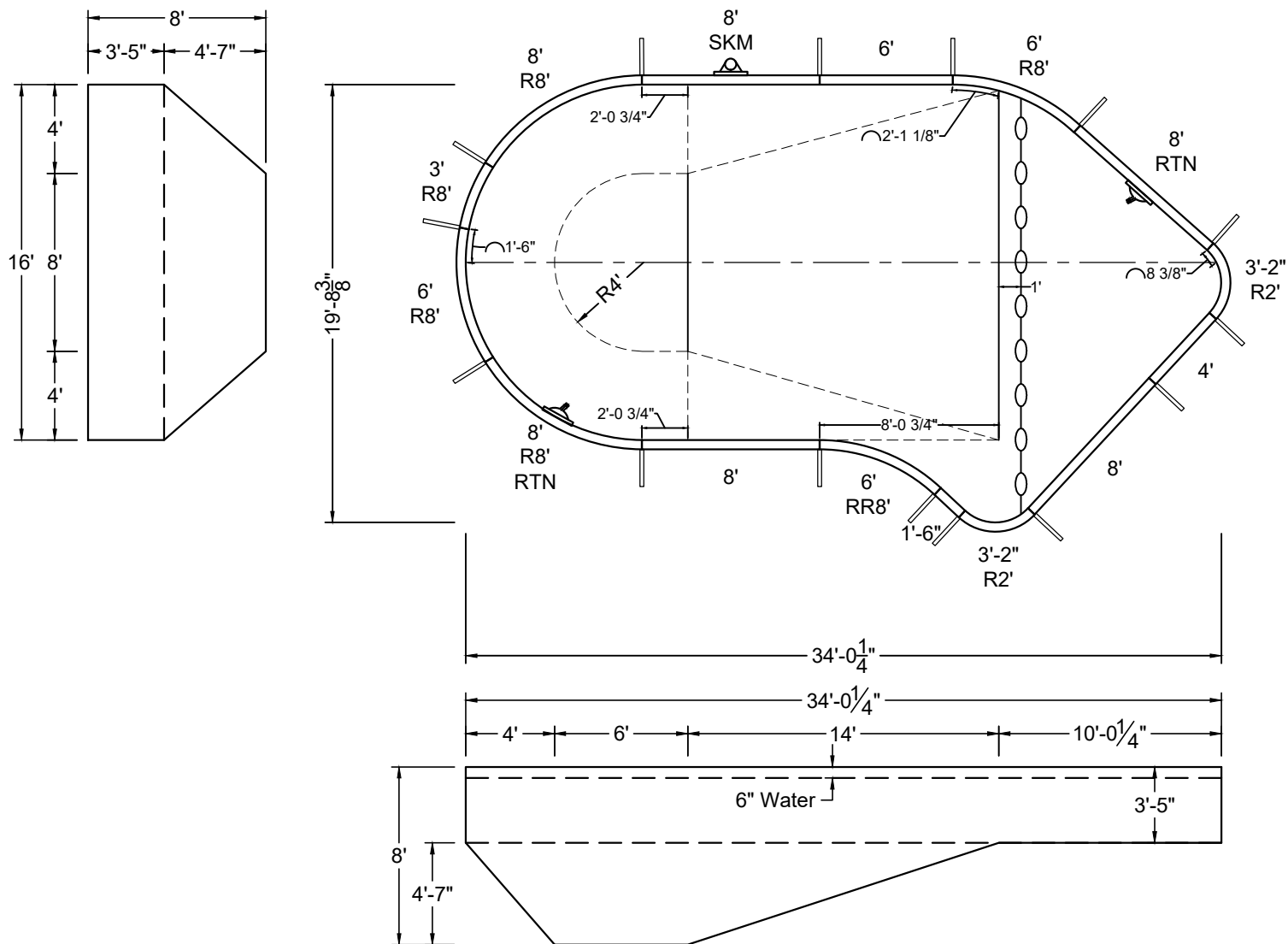


ALL DIMENSIONS ARE FINISHED

DIVING / SLIDE EQUIPMENT DISCLAIMER:

THE BOTTOM CONFIGURATION SHOWN MEETS WITH THE CURRENT ISPSC MINIMUM STANDARDS FOR POOLS APPROVED FOR THE USE WITH MANUFACTURED DIVING EQUIPMENT. ALL DIVING EQUIPMENT MUST BE INSTALLED AND LOCATED IN ACCORDANCE WITH THE DIVING / SLIDE MANUFACTURER'S RECOMMENDATIONS. IF DIVING EQUIPMENT IS INSTALLED: PLEASE FOLLOW ALL THE DIVING / SLIDE EQUIPMENT MANUFACTURER'S INSTALLATION, USE AND SAFETY INSTRUCTIONS.

MEETS DEPTH AND SHAPE MINIMUM STANDARD ANSI/NSPI5-2003



SHAPE : OVAL LAZY-L

PERIMETER : 86'-9 13/32"

DWG # : MN1634OL219

SIZE : 16' X 34'

VOLUME : 18,724 US GAL.

DATE : 1/18/2017

HAND : LEFT

SURFACE AREA : 481.706 SQ. FT.

REVISION # : 01

PANEL HEIGHT : 3'-6"

SCALE : N.T.S

KIT REF : MN1634OL219-L

PANEL TYPE : 5" TOP

DRAWN BY : NM-BCC

A

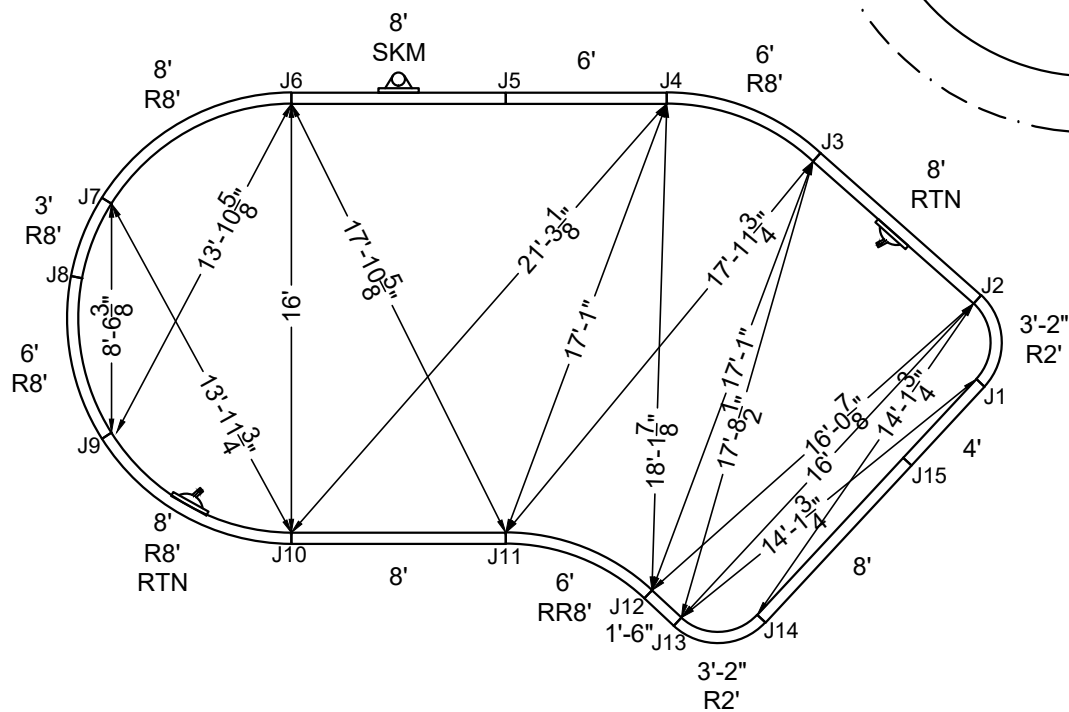
ALL DIMENSIONS ARE FINISHED

DIVING / SLIDE EQUIPMENT DISCLAIMER:

THE BOTTOM CONFIGURATION SHOWN MEETS WITH THE CURRENT ISPC MINIMUM STANDARDS FOR POOLS APPROVED FOR THE USE WITH MANUFACTURED DIVING EQUIPMENT. ALL DIVING EQUIPMENT MUST BE INSTALLED AND LOCATED IN ACCORDANCE WITH THE DIVING / SLIDE MANUFACTURER'S RECOMMENDATIONS. IF DIVING EQUIPMENT IS INSTALLED: PLEASE FOLLOW ALL THE DIVING / SLIDE EQUIPMENT MANUFACTURER'S INSTALLATION, USE AND SAFETY INSTRUCTIONS.

MEETS DEPTH AND SHAPE MINIMUM STANDARD ANSI/NSPI5-2003

STEEL CHECK

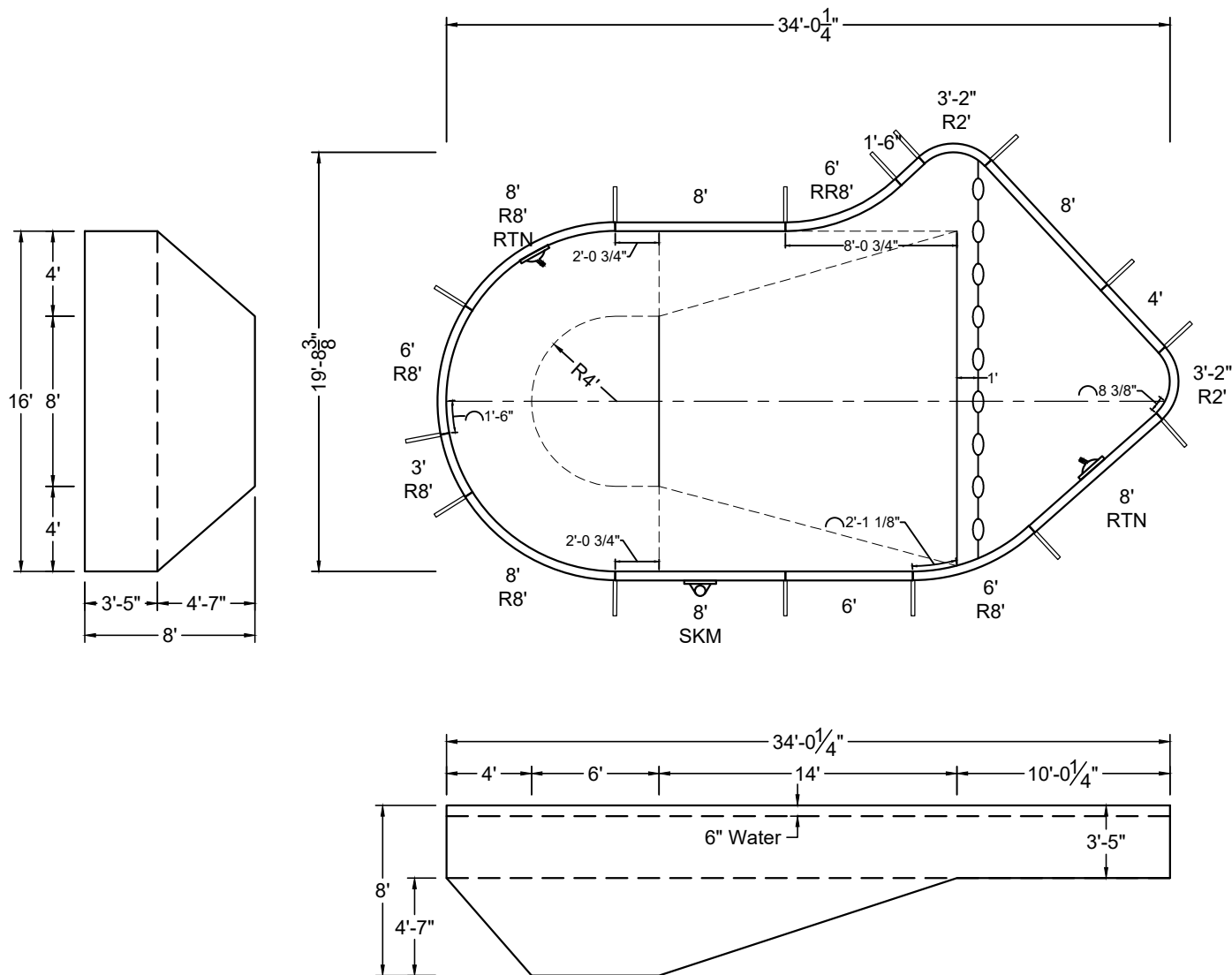


ALL DIMENSIONS ARE FINISHED

DIVING / SLIDE EQUIPMENT DISCLAIMER:

THE BOTTOM CONFIGURATION SHOWN MEETS WITH THE CURRENT ISPSC MINIMUM STANDARDS FOR POOLS APPROVED FOR THE USE WITH MANUFACTURED DIVING EQUIPMENT. ALL DIVING EQUIPMENT MUST BE INSTALLED AND LOCATED IN ACCORDANCE WITH THE DIVING / SLIDE MANUFACTURER'S RECOMMENDATIONS. IF DIVING EQUIPMENT IS INSTALLED: PLEASE FOLLOW ALL THE DIVING / SLIDE EQUIPMENT MANUFACTURER'S INSTALLATION, USE AND SAFETY INSTRUCTIONS.

MEETS DEPTH AND SHAPE MINIMUM STANDARD ANSI/NSPI5-2003



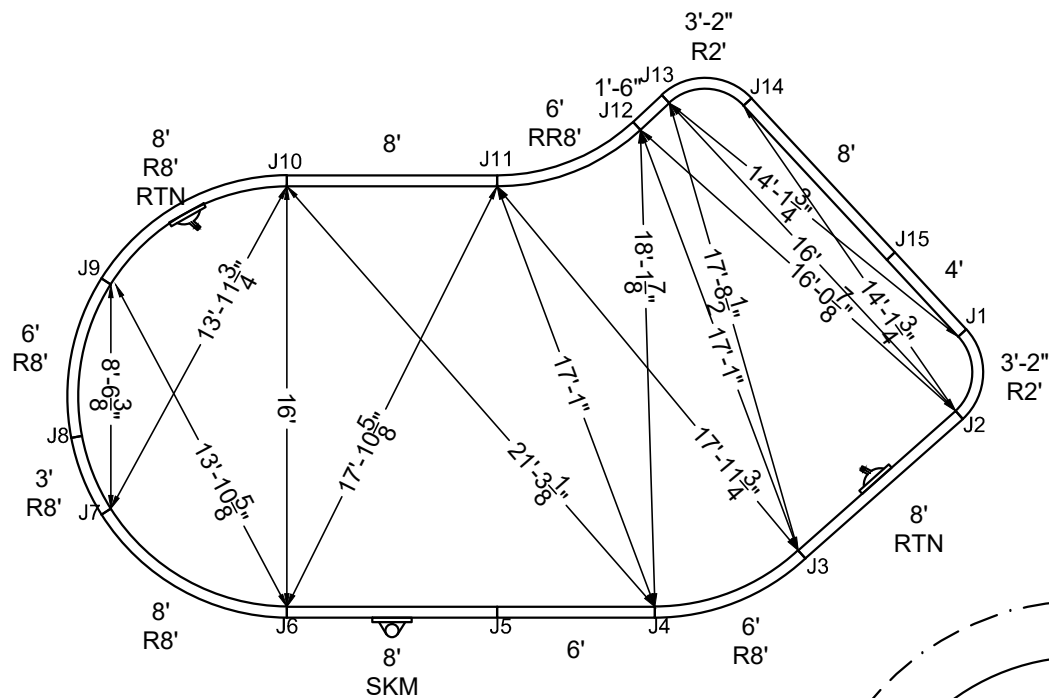
SHAPE : OVAL LAZY-L	SIZE : 16' X 34'	HAND : RIGHT	PANEL HEIGHT : 3'-6"	PANEL TYPE : 5" TOP
PERIMETER : 86'-9 13/32"	VOLUME : 18,724 US GAL.	SURFACE AREA : 481.706 SQ. FT.	SCALE : N.T.S	DRAWN BY : NM-BCC
DWG # : MN1634OL219	DATE : 1/18/2017	REVISION # : 01	KIT REF : MN1634OL219-R	A

ALL DIMENSIONS ARE FINISHED

DIVING / SLIDE EQUIPMENT DISCLAIMER:

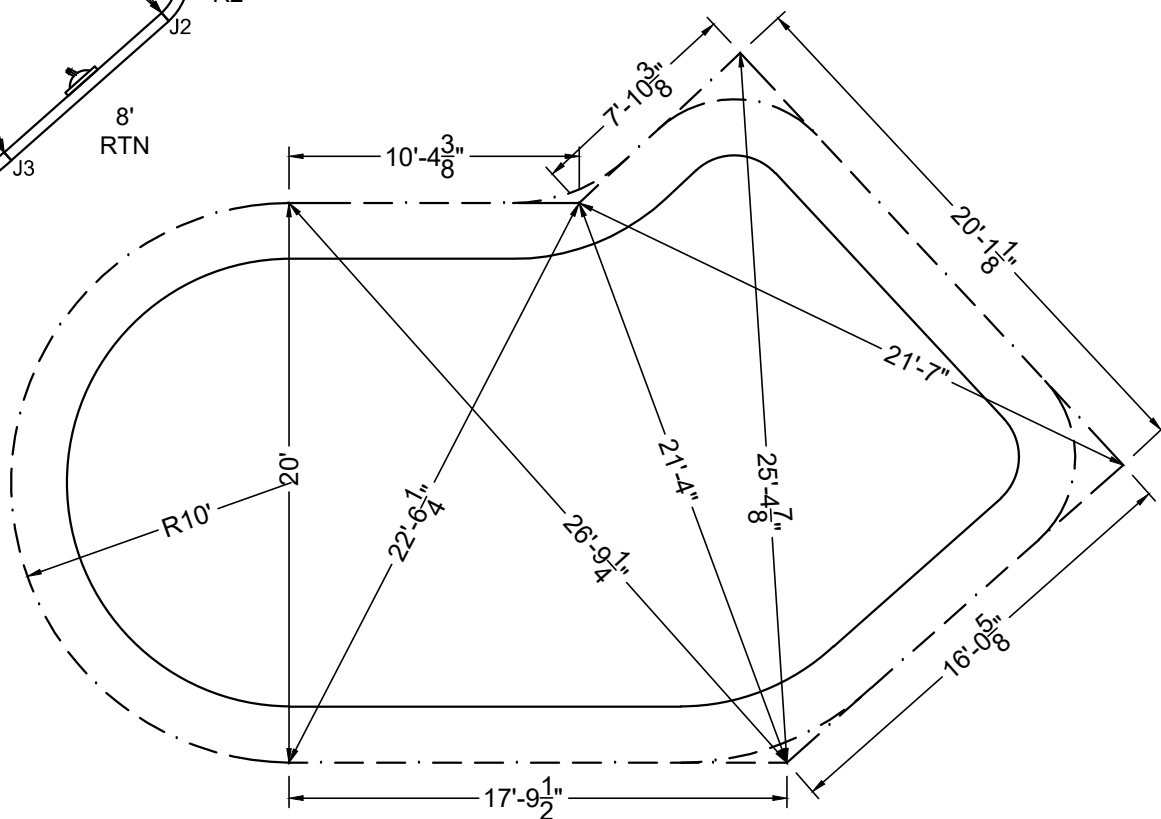
THE BOTTOM CONFIGURATION SHOWN MEETS WITH THE CURRENT ISPS MINIMUM STANDARDS FOR POOLS APPROVED FOR THE USE WITH MANUFACTURED DIVING EQUIPMENT. ALL DIVING EQUIPMENT MUST BE INSTALLED AND LOCATED IN ACCORDANCE WITH THE DIVING / SLIDE MANUFACTURER'S RECOMMENDATIONS. IF DIVING EQUIPMENT IS INSTALLED: PLEASE FOLLOW ALL THE DIVING / SLIDE EQUIPMENT MANUFACTURER'S INSTALLATION, USE AND SAFETY INSTRUCTIONS.

MEETS DEPTH AND SHAPE MINIMUM STANDARD ANSI/NSPI-2003



STEEL CHECK

STAKE OUT



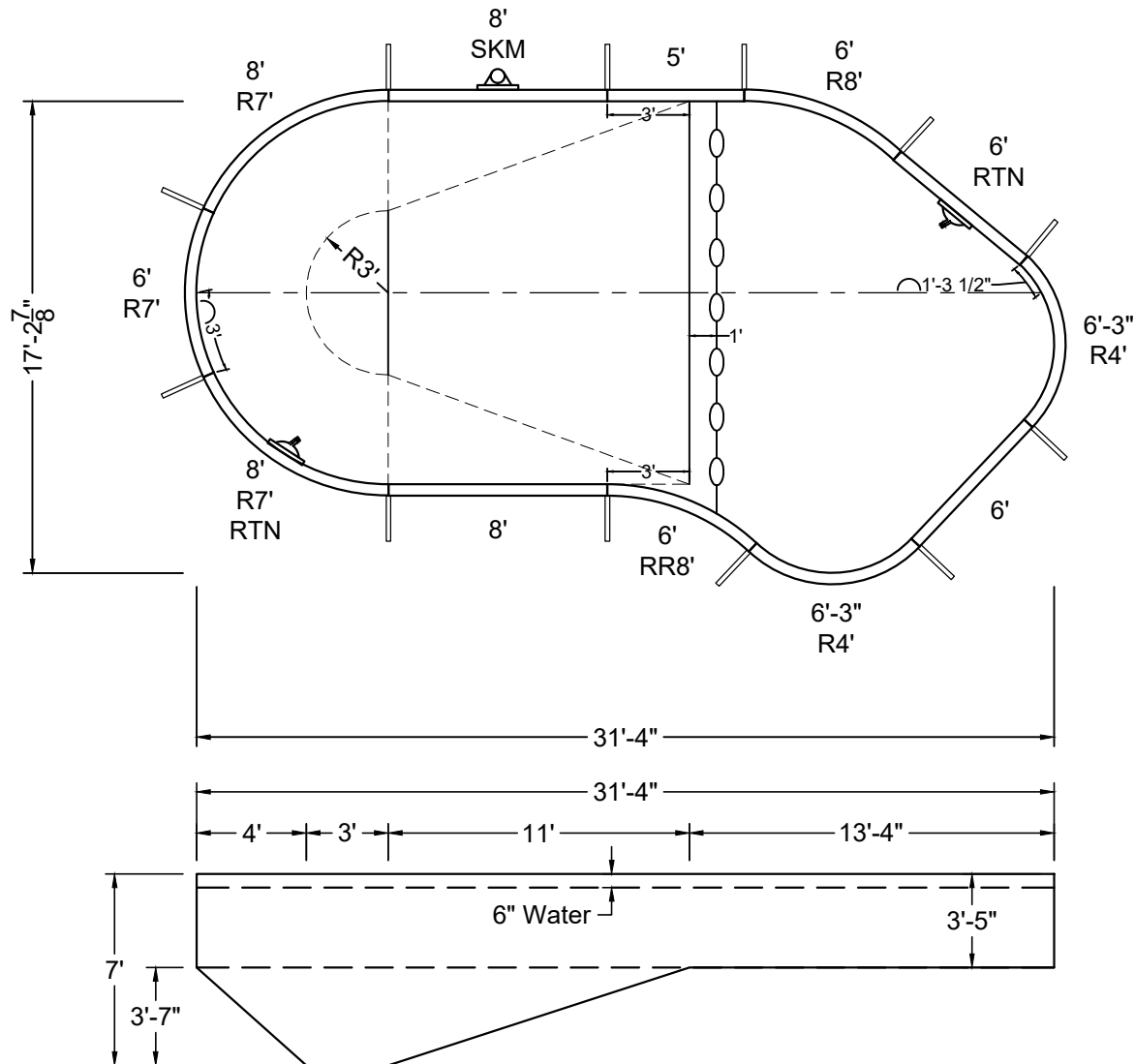
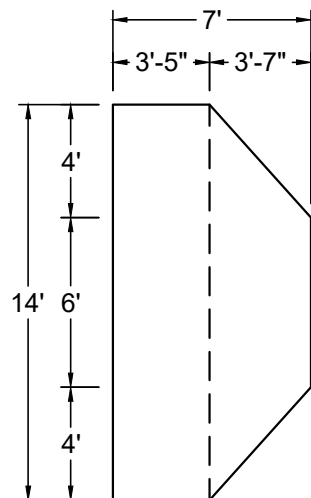
SHAPE : OVAL LAZY-L	SIZE : 16' X 34'	HAND : RIGHT	PANEL HEIGHT : 3'-6"	DRAWN BY : NM-BCC
DWG # : MN1634OL219	DATE : 1/18/2017	REVISION # : 01	KIT REF : MN1634OL219-R	B

ALL DIMENSIONS ARE FINISHED



NON-DIVING POOL
USE OF DIVING EQUIPMENT IS PROHIBITED

MEETS DEPTH AND SHAPE MINIMUM STANDARD ANSI/NSPI5-2003



SHAPE : OVAL LAZY-L	SIZE : 14' X 31'-4"	HAND : LEFT	PANEL HEIGHT : 3'-6"	PANEL TYPE : 5" TOP
PERIMETER : 79'-6 25/32"	VOLUME : 13,272 US GAL.	SURFACE AREA : 402.150 SQ. FT.	SCALE : N.T.S	DRAWN BY : NM-BCC
DWG # : MN1431OL419	DATE : 1/18/2017	REVISION # : 01	KIT REF : MN1431OL419-L	A



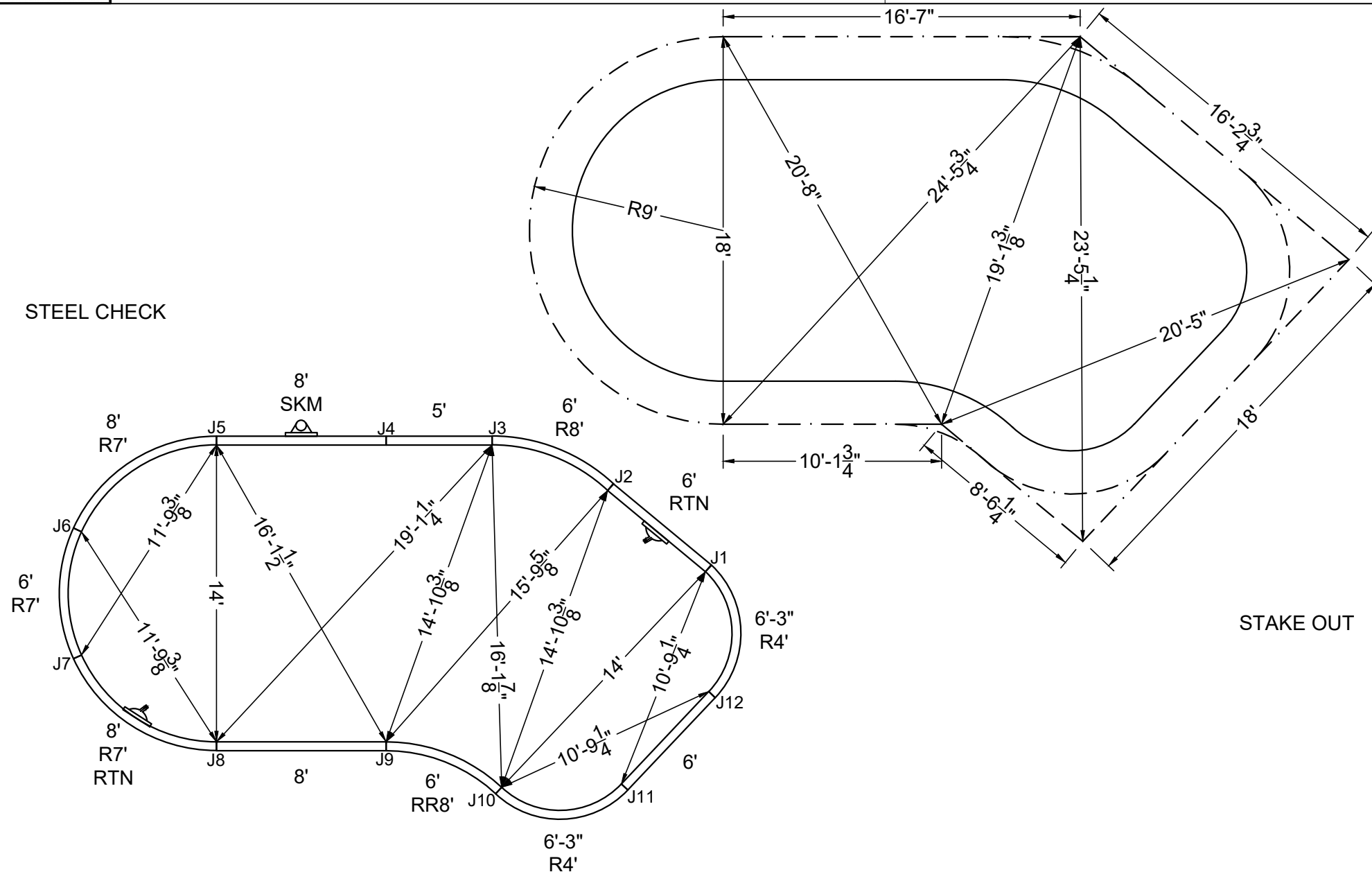
NON-DIVING POOL

USE OF DIVING EQUIPMENT IS PROHIBITED

MEETS DEPTH AND SHAPE MINIMUM STANDARD ANSI/NSPI5-2003

ALL DIMENSIONS ARE FINISHED

STEEL CHECK



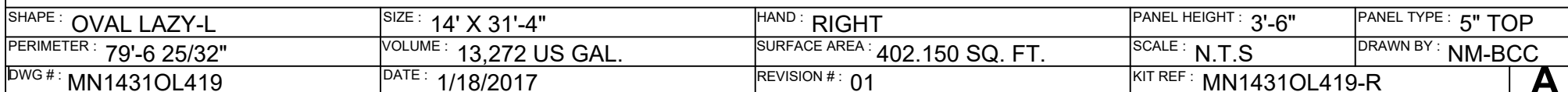
STAKE OUT

SHAPE : OVAL LAZY-L	SIZE : 14' X 31'-4"	HAND : LEFT	PANEL HEIGHT : 3'-6"	DRAWN BY : NM-BCC
DWG # : MN1431OL419	DATE : 1/18/2017	REVISION # : 01	KIT REF : MN1431OL419-L	B



MEETS DEPTH AND SHAPE MINIMUM STANDARD ANSI/NSPI5-2003

ALL DIMENSIONS ARE FINISHED





MEGNA
POOLS

Megna Plastic Packaging Corp.

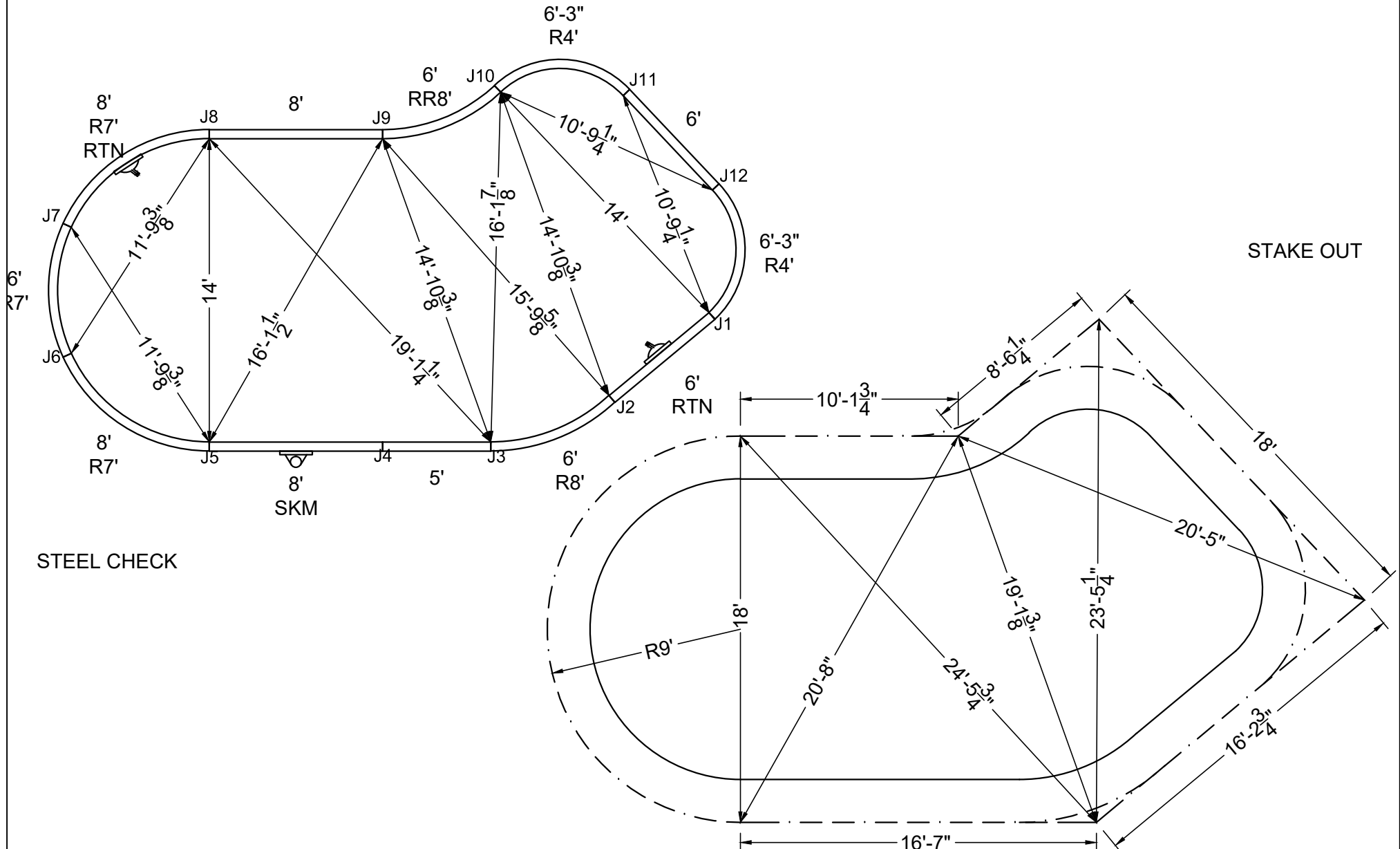


NON-DIVING POOL

USE OF DIVING EQUIPMENT IS PROHIBITED

MEETS DEPTH AND SHAPE MINIMUM STANDARD ANSI/NSPI5-2003

ALL DIMENSIONS ARE FINISHED



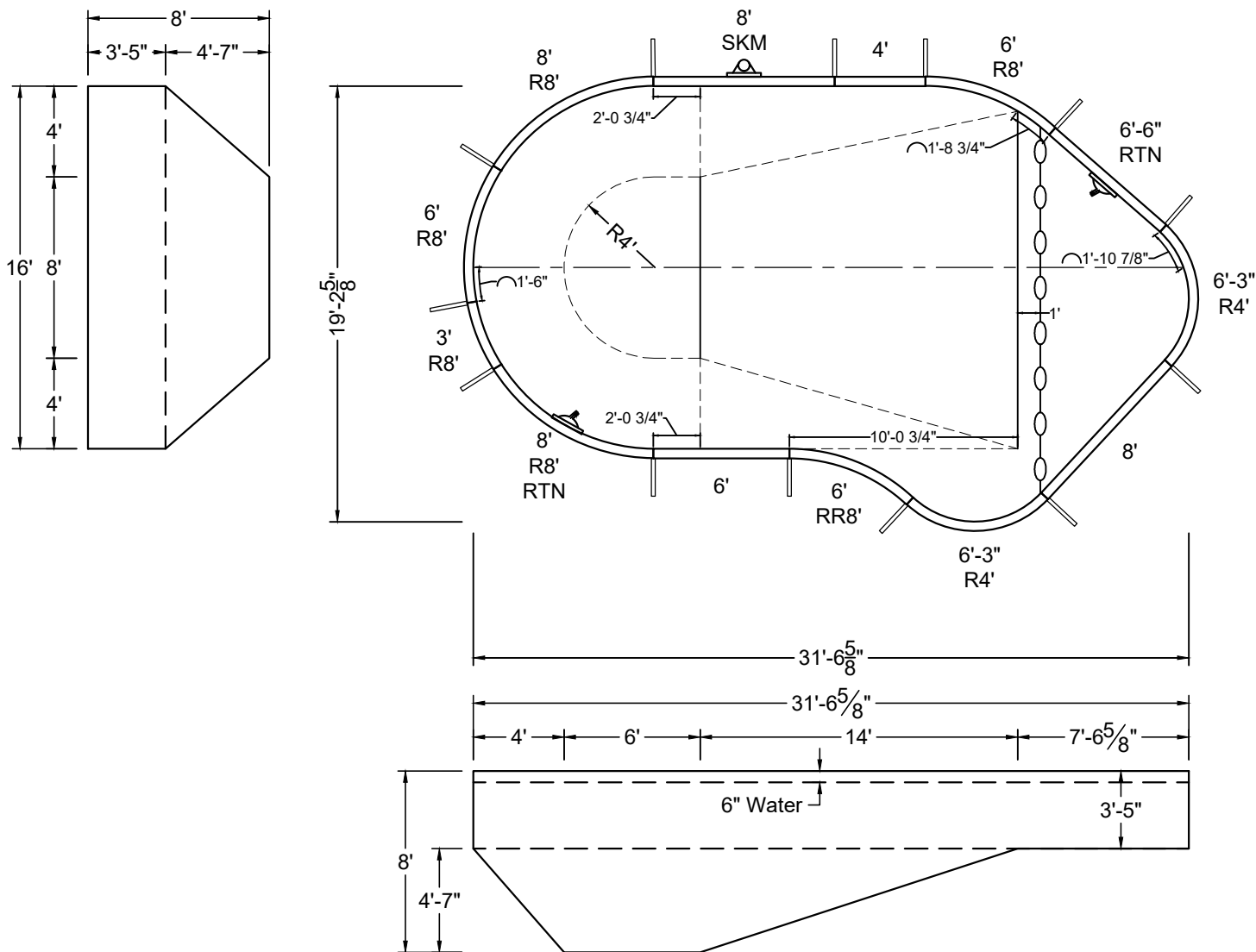
SHAPE: OVAL LAZY-L	SIZE: 14' X 31'-4"	HAND: RIGHT	PANEL HEIGHT: 3'-6"	DRAWN BY: NM-BCC
DWG #: MN1431OL419	DATE: 1/18/2017	REVISION #: 01	KIT REF: MN1431OL419-R	B

ALL DIMENSIONS ARE FINISHED

DIVING / SLIDE EQUIPMENT DISCLAIMER:

THE BOTTOM CONFIGURATION SHOWN MEETS WITH THE CURRENT ISPSC MINIMUM STANDARDS FOR POOLS APPROVED FOR THE USE WITH MANUFACTURED DIVING EQUIPMENT. ALL DIVING EQUIPMENT MUST BE INSTALLED AND LOCATED IN ACCORDANCE WITH THE DIVING / SLIDE MANUFACTURER'S RECOMMENDATIONS. IF DIVING EQUIPMENT IS INSTALLED: PLEASE FOLLOW ALL THE DIVING / SLIDE EQUIPMENT MANUFACTURER'S INSTALLATION, USE AND SAFETY INSTRUCTIONS.

MEETS DEPTH AND SHAPE MINIMUM STANDARD ANSI/NSPI-2003



SHAPE : OVAL LAZY-L	SIZE : 16' X 31'-7"	HAND : LEFT	PANEL HEIGHT : 3'-6"	PANEL TYPE : 5" TOP
PERIMETER : 82'-0 25/32"	VOLUME : 17,981 US GAL.	SURFACE AREA : 452.699 SQ. FT.	SCALE : N.T.S	DRAWN BY : NM-BCC
DWG # : MN1632OL419	DATE : 1/18/2017	REVISION # : 01	KIT REF : MN1632OL419-L	A



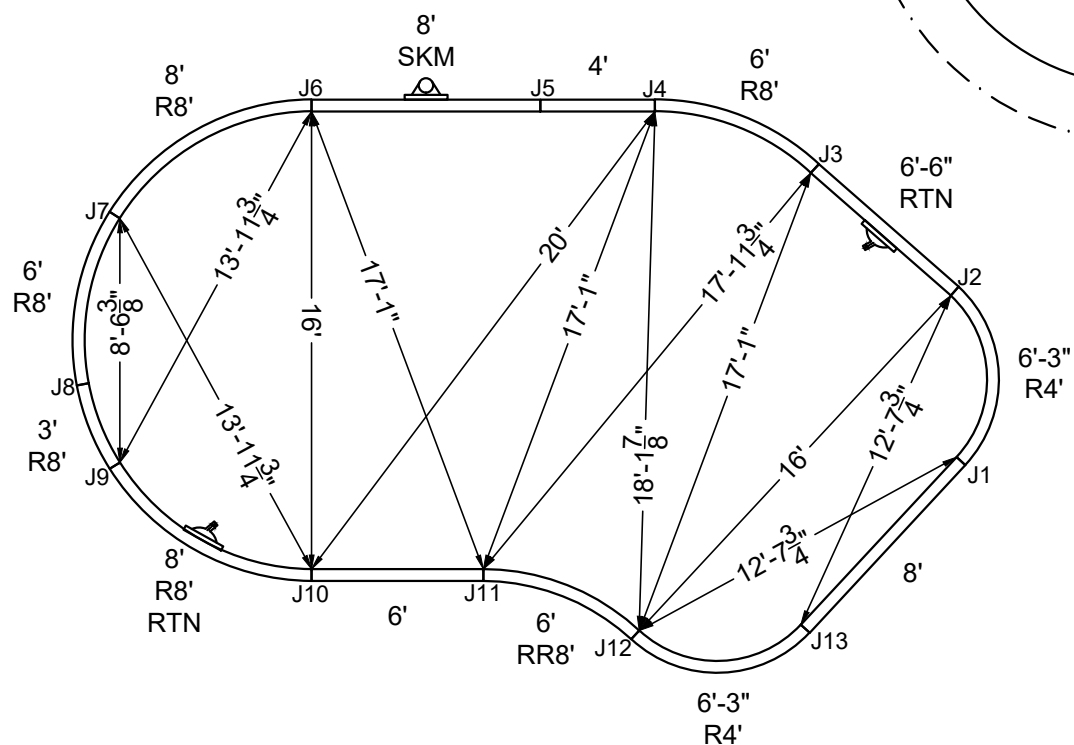
ALL DIMENSIONS ARE FINISHED

DIVING / SLIDE EQUIPMENT DISCLAIMER:

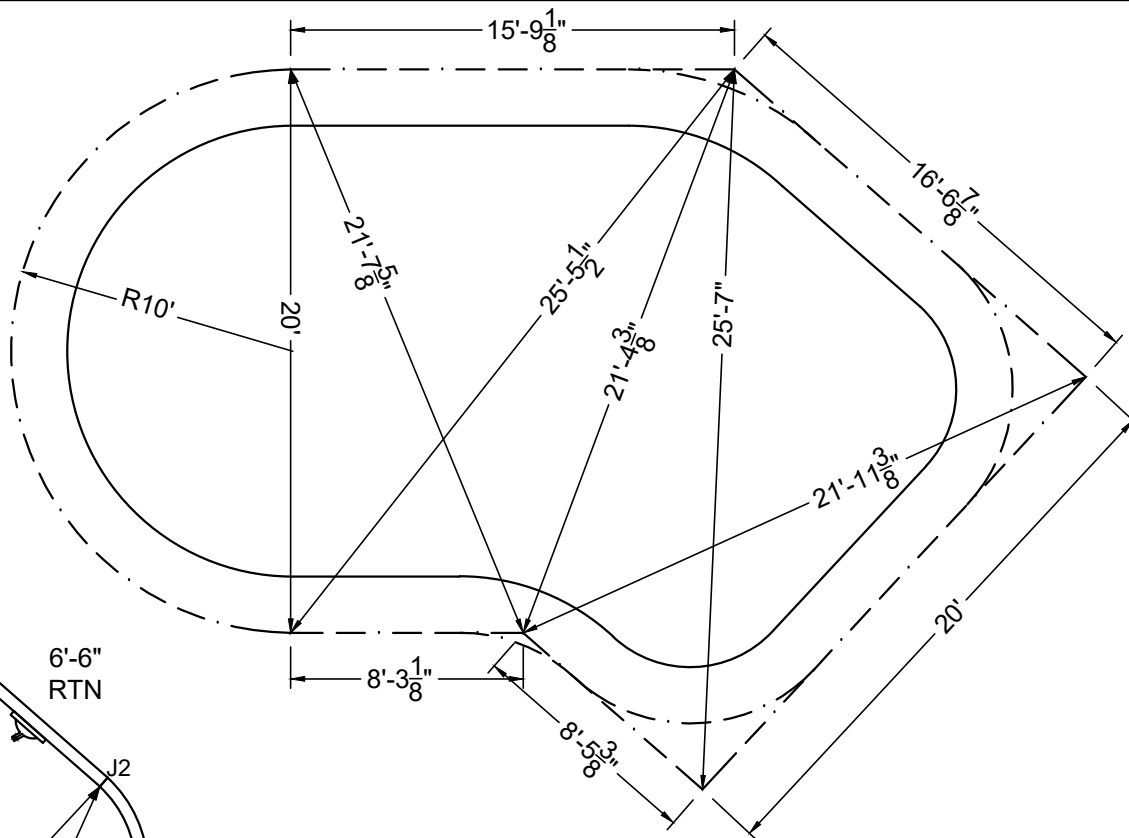
THE BOTTOM CONFIGURATION SHOWN MEETS WITH THE CURRENT IPSC MINIMUM STANDARDS FOR POOLS APPROVED FOR THE USE WITH MANUFACTURED DIVING EQUIPMENT. ALL DIVING EQUIPMENT MUST BE INSTALLED AND LOCATED IN ACCORDANCE WITH THE DIVING / SLIDE MANUFACTURER'S RECOMMENDATIONS. IF DIVING EQUIPMENT IS INSTALLED: PLEASE FOLLOW ALL THE DIVING / SLIDE EQUIPMENT MANUFACTURER'S INSTALLATION, USE AND SAFETY INSTRUCTIONS.

MEETS DEPTH AND SHAPE MINIMUM STANDARD ANSI/NSPI5-2003

STEEL CHECK



STAKE OUT



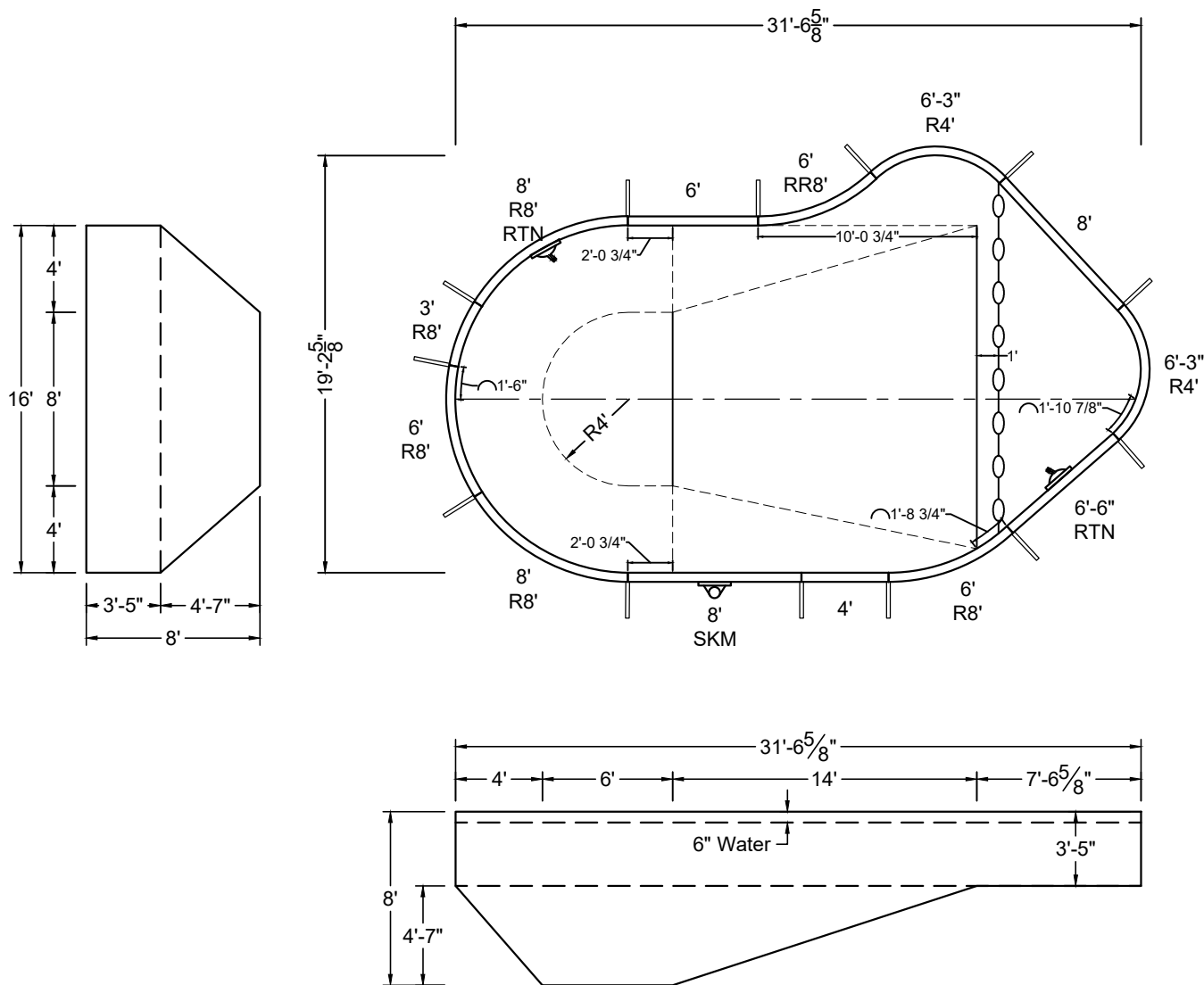
SHAPE : OVAL LAZY-L	SIZE : 16' X 31'-7"	HAND : LEFT	PANEL HEIGHT : 3'-6"	DRAWN BY : NM-BCC
DWG # : MN1632OL419	DATE : 1/18/2017	REVISION # : 01	KIT REF : MN1632OL419-L	B

ALL DIMENSIONS ARE FINISHED

DIVING / SLIDE EQUIPMENT DISCLAIMER:

THE BOTTOM CONFIGURATION SHOWN MEETS WITH THE CURRENT ISPSC MINIMUM STANDARDS FOR POOLS APPROVED FOR THE USE WITH MANUFACTURED DIVING EQUIPMENT. ALL DIVING EQUIPMENT MUST BE INSTALLED AND LOCATED IN ACCORDANCE WITH THE DIVING / SLIDE MANUFACTURER'S RECOMMENDATIONS. IF DIVING EQUIPMENT IS INSTALLED: PLEASE FOLLOW ALL THE DIVING / SLIDE EQUIPMENT MANUFACTURER'S INSTALLATION, USE AND SAFETY INSTRUCTIONS.

MEETS DEPTH AND SHAPE MINIMUM STANDARD ANSI/NSPI5-2003



SHAPE: OVAL LAZY-L

SIZE: 16' X 31'-7"

HAND: RIGHT

PANEL HEIGHT: 3'-6"

PANEL TYPE: 5" TOP

PERIMETER: 82'-0 25/32"

VOLUME: 17,981 US GAL.

SURFACE AREA: 452.699 SQ. FT.

SCALE: N.T.S

DRAWN BY: NM-BCC

DWG #: MN1632OL419

DATE: 1/18/2017

REVISION #: 01

KIT REF: MN1632OL419-R

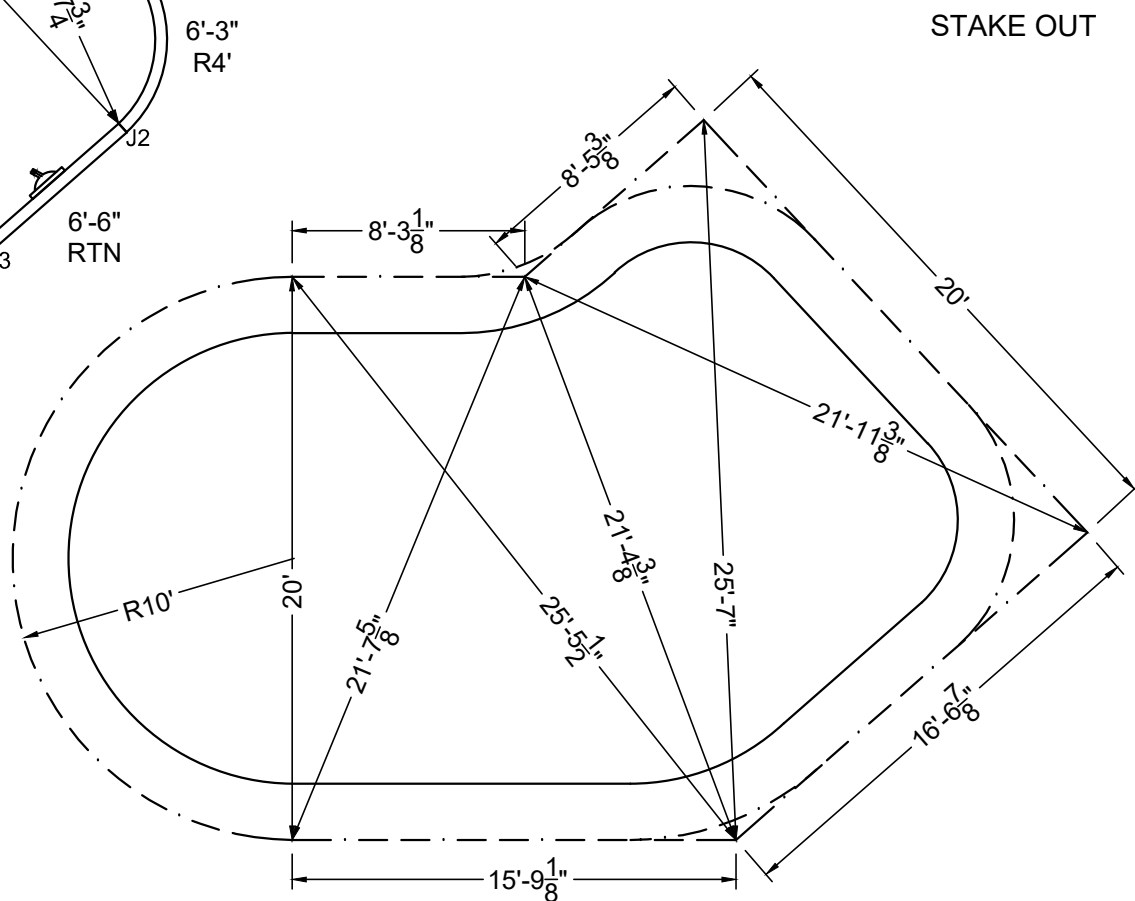
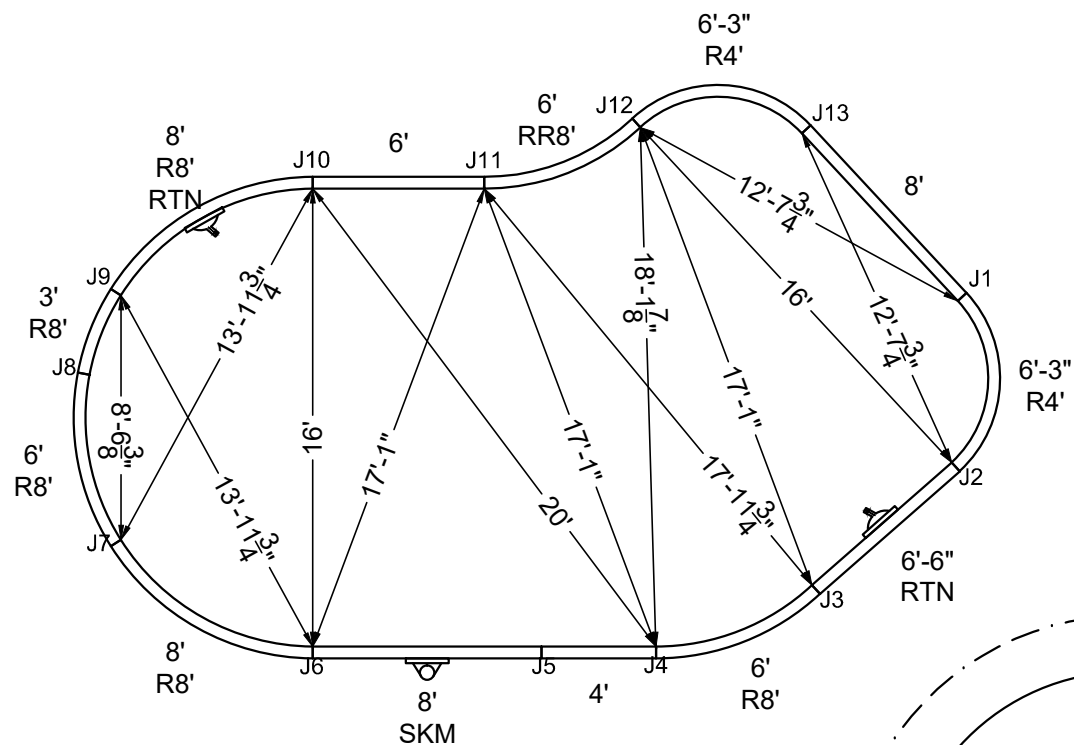
A

ALL DIMENSIONS ARE FINISHED

DIVING / SLIDE EQUIPMENT DISCLAIMER:

THE BOTTOM CONFIGURATION SHOWN MEETS WITH THE CURRENT ISPSC MINIMUM STANDARDS FOR POOLS APPROVED FOR THE USE WITH MANUFACTURED DIVING EQUIPMENT. ALL DIVING EQUIPMENT MUST BE INSTALLED AND LOCATED IN ACCORDANCE WITH THE DIVING / SLIDE MANUFACTURER'S RECOMMENDATIONS. IF DIVING EQUIPMENT IS INSTALLED: PLEASE FOLLOW ALL THE DIVING / SLIDE EQUIPMENT MANUFACTURER'S INSTALLATION, USE AND SAFETY INSTRUCTIONS.

MEETS DEPTH AND SHAPE MINIMUM STANDARD ANSI/NSPI5-2003



SHAPE: OVAL LAZY-L

SIZE: 16' X 31'-7"

HAND: RIGHT

PANEL HEIGHT: 3'-6"

DRAWN BY: NM-BCC

DWG #: MN1632OL419

DATE: 1/18/2017

REVISION #: 01

KIT REF: MN1632OL419-R

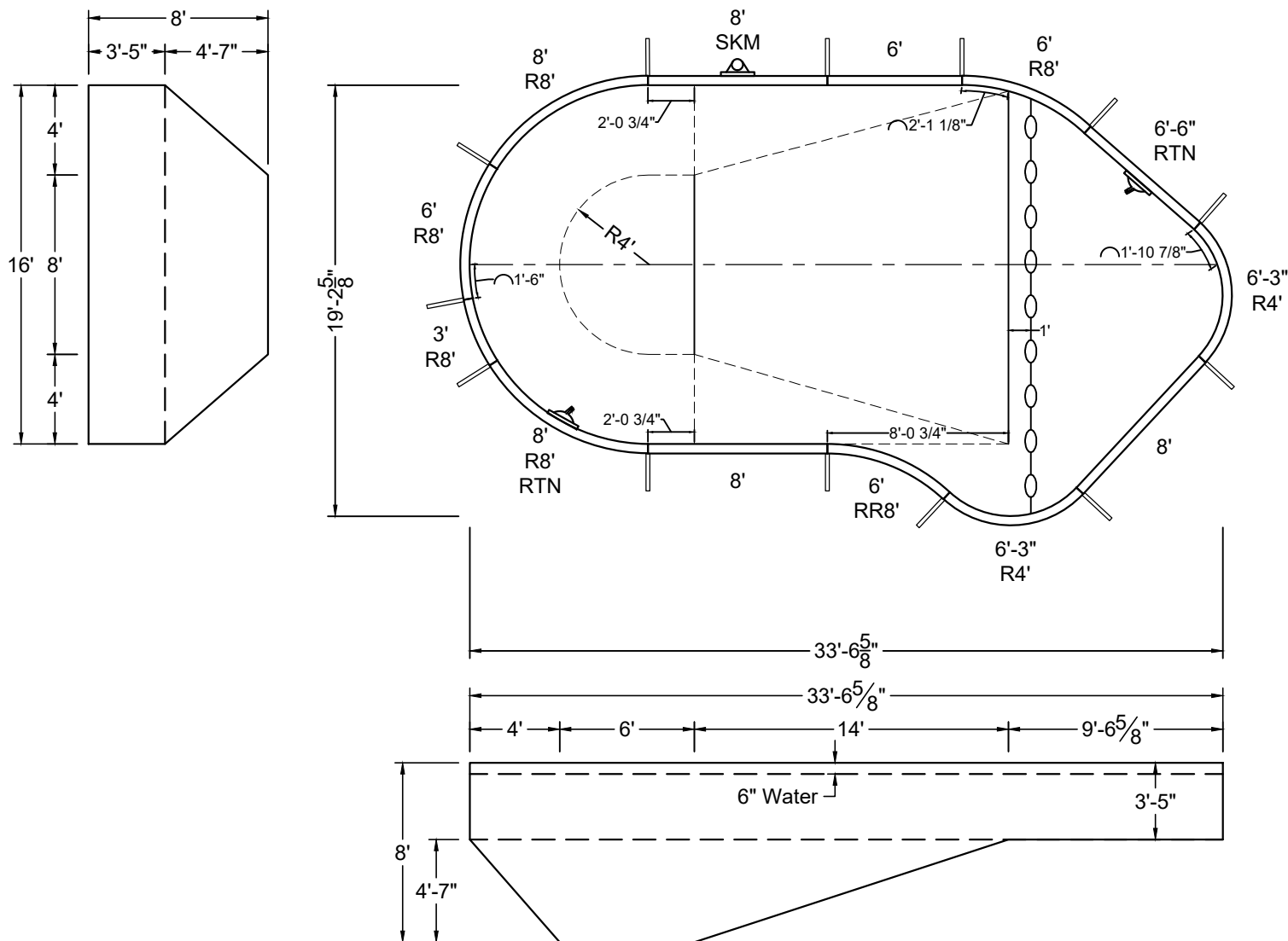
B

ALL DIMENSIONS ARE FINISHED

DIVING / SLIDE EQUIPMENT DISCLAIMER:

THE BOTTOM CONFIGURATION SHOWN MEETS WITH THE CURRENT ISPSC MINIMUM STANDARDS FOR POOLS APPROVED FOR THE USE WITH MANUFACTURED DIVING EQUIPMENT. ALL DIVING EQUIPMENT MUST BE INSTALLED AND LOCATED IN ACCORDANCE WITH THE DIVING / SLIDE MANUFACTURER'S RECOMMENDATIONS. IF DIVING EQUIPMENT IS INSTALLED: PLEASE FOLLOW ALL THE DIVING / SLIDE EQUIPMENT MANUFACTURER'S INSTALLATION, USE AND SAFETY INSTRUCTIONS.

MEETS DEPTH AND SHAPE MINIMUM STANDARD ANSI/NSPI5-2003



SHAPE : OVAL LAZY-L	SIZE : 16' X 33'-7"	HAND : LEFT	PANEL HEIGHT : 3'-6"	PANEL TYPE : 5" TOP
PERIMETER : 86'-0 25/32"	VOLUME : 18,801 US GAL.	SURFACE AREA : 484.698 SQ. FT.	SCALE : N.T.S	DRAWN BY : NM-BCC
DWG # : MN1634OL419	DATE : 1/18/2017	REVISION # : 01	KIT REF : MN1634OL419-L	A



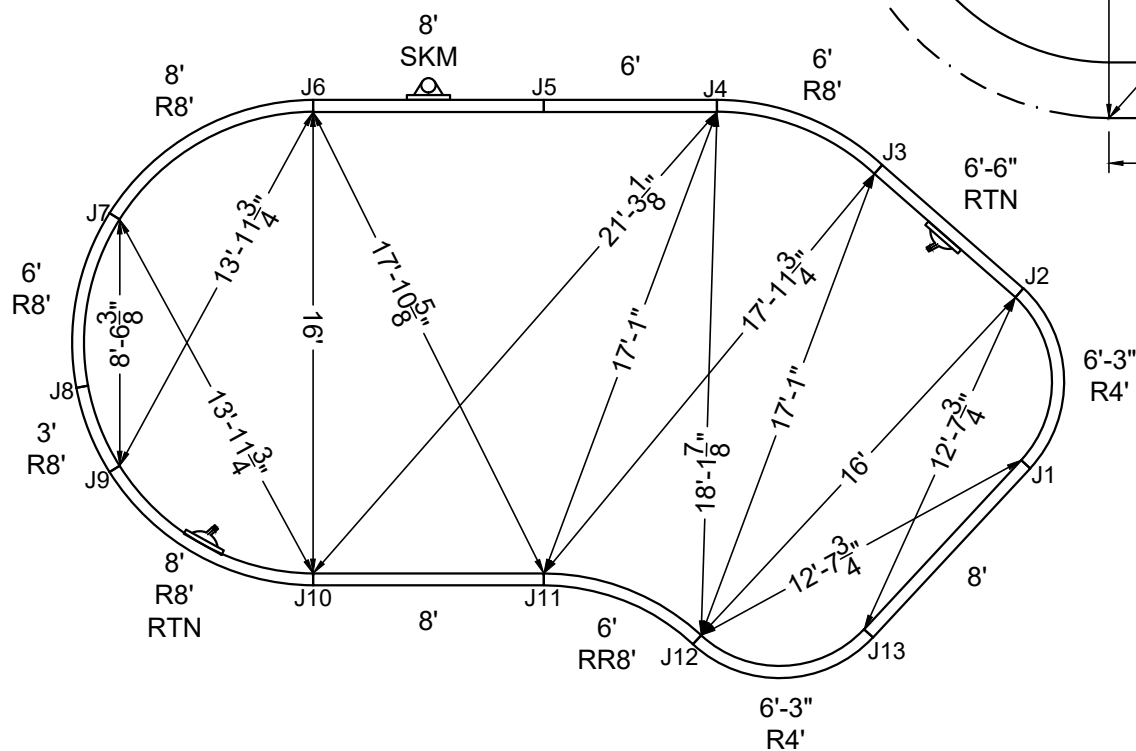
ALL DIMENSIONS ARE FINISHED

DIVING / SLIDE EQUIPMENT DISCLAIMER:

THE BOTTOM CONFIGURATION SHOWN MEETS WITH THE CURRENT IPSC MINIMUM STANDARDS FOR POOLS APPROVED FOR THE USE WITH MANUFACTURED DIVING EQUIPMENT. ALL DIVING EQUIPMENT MUST BE INSTALLED AND LOCATED IN ACCORDANCE WITH THE DIVING / SLIDE MANUFACTURER'S RECOMMENDATIONS. IF DIVING EQUIPMENT IS INSTALLED: PLEASE FOLLOW ALL THE DIVING / SLIDE EQUIPMENT MANUFACTURER'S INSTALLATION, USE AND SAFETY INSTRUCTIONS.

MEETS DEPTH AND SHAPE MINIMUM STANDARD ANSI/NSPI5-2003

STEEL CHECK



STAKE OUT

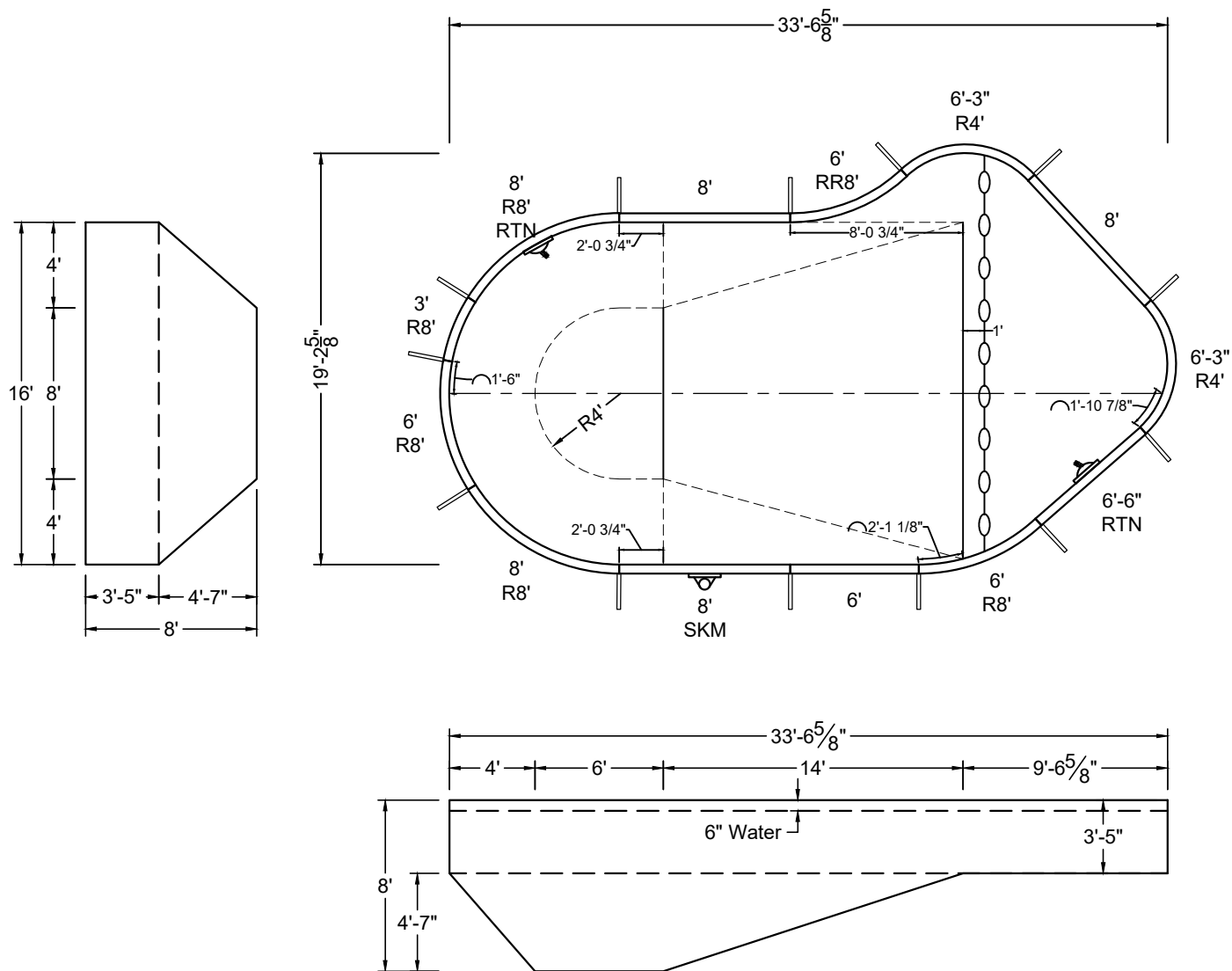
SHAPE : OVAL LAZY-L	SIZE : 16' X 33'-7"	HAND : LEFT	PANEL HEIGHT : 3'-6"	DRAWN BY : NM-BCC
DWG # : MN1634OL419	DATE : 1/18/2017	REVISION # : 01	KIT REF : MN1634OL419-L	B

ALL DIMENSIONS ARE FINISHED

DIVING / SLIDE EQUIPMENT DISCLAIMER:

THE BOTTOM CONFIGURATION SHOWN MEETS WITH THE CURRENT ISPS MINIMUM STANDARDS FOR POOLS APPROVED FOR THE USE WITH MANUFACTURED DIVING EQUIPMENT. ALL DIVING EQUIPMENT MUST BE INSTALLED AND LOCATED IN ACCORDANCE WITH THE DIVING / SLIDE MANUFACTURER'S RECOMMENDATIONS. IF DIVING EQUIPMENT IS INSTALLED: PLEASE FOLLOW ALL THE DIVING / SLIDE EQUIPMENT MANUFACTURER'S INSTALLATION, USE AND SAFETY INSTRUCTIONS.

MEETS DEPTH AND SHAPE MINIMUM STANDARD ANSI/NSPI-2003



SHAPE : OVAL LAZY-L

PERIMETER : 86'-0 25/32"

DWG # : MN1634OL419

SIZE : 16' X 33'-7"

VOLUME : 18,801 US GAL.

DATE : 1/18/2017

HAND : RIGHT

SURFACE AREA : 484.698 SQ. FT.

REVISION # : 01

PANEL HEIGHT : 3'-6"

SCALE : N.T.S

KIT REF : MN1634OL419-R

PANEL TYPE : 5" TOP

DRAWN BY : NM-BCC

A

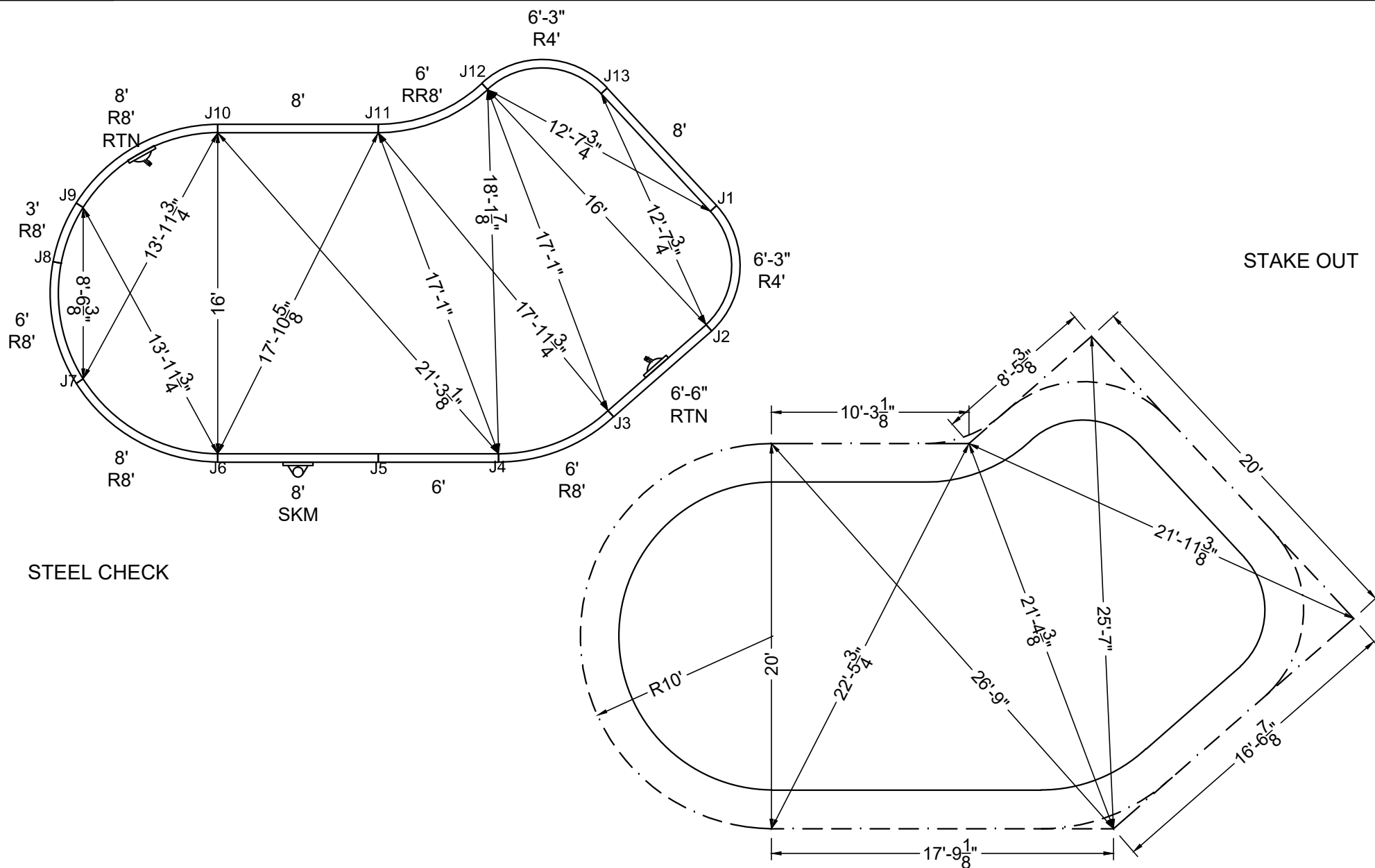


ALL DIMENSIONS ARE FINISHED

DIVING / SLIDE EQUIPMENT DISCLAIMER:

THE BOTTOM CONFIGURATION SHOWN MEETS WITH THE CURRENT IPSC MINIMUM STANDARDS FOR POOLS APPROVED FOR THE USE WITH MANUFACTURED DIVING EQUIPMENT. ALL DIVING EQUIPMENT MUST BE INSTALLED AND LOCATED IN ACCORDANCE WITH THE DIVING / SLIDE MANUFACTURER'S RECOMMENDATIONS. IF DIVING EQUIPMENT IS INSTALLED: PLEASE FOLLOW ALL THE DIVING / SLIDE EQUIPMENT MANUFACTURER'S INSTALLATION, USE AND SAFETY INSTRUCTIONS.

MEETS DEPTH AND SHAPE MINIMUM STANDARD ANSI/NSPI5-2003



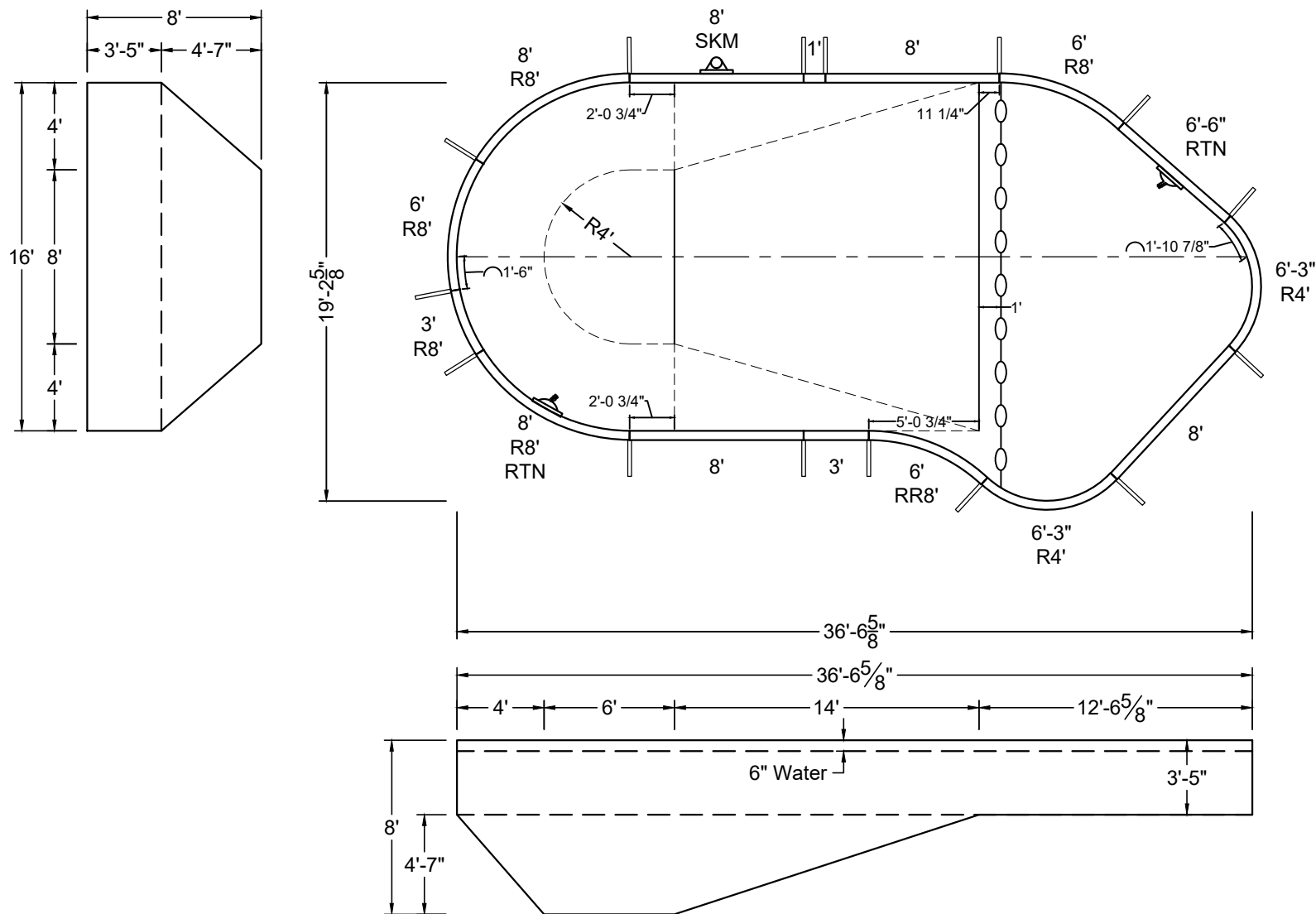
SHAPE : OVAL LAZY-L	SIZE : 16' X 33'-7"	HAND : RIGHT	PANEL HEIGHT : 3'-6"	DRAWN BY : NM-BCC
DWG # : MN1634OL419	DATE : 1/18/2017	REVISION # : 01	KIT REF : MN1634OL419-R	B

ALL DIMENSIONS ARE FINISHED

DIVING / SLIDE EQUIPMENT DISCLAIMER:

THE BOTTOM CONFIGURATION SHOWN MEETS WITH THE CURRENT ISPSC MINIMUM STANDARDS FOR POOLS APPROVED FOR THE USE WITH MANUFACTURED DIVING EQUIPMENT. ALL DIVING EQUIPMENT MUST BE INSTALLED AND LOCATED IN ACCORDANCE WITH THE DIVING / SLIDE MANUFACTURER'S RECOMMENDATIONS. IF DIVING EQUIPMENT IS INSTALLED: PLEASE FOLLOW ALL THE DIVING / SLIDE EQUIPMENT MANUFACTURER'S INSTALLATION, USE AND SAFETY INSTRUCTIONS.

MEETS DEPTH AND SHAPE MINIMUM STANDARD ANSI/NSPI5-2003



SHAPE : OVAL LAZY-L	SIZE : 16' X 36'-7"	HAND : LEFT	PANEL HEIGHT : 3'-6"	PANEL TYPE : 5" TOP
PERIMETER : 92'-0 25/32"	VOLUME : 20,028 US GAL.	SURFACE AREA : 532.696 SQ. FT.	SCALE : N.T.S	DRAWN BY : NM-BCC
DWG # : MN1637OL419	DATE : 1/18/2017	REVISION # : 01	KIT REF : MN1637OL419-L	A



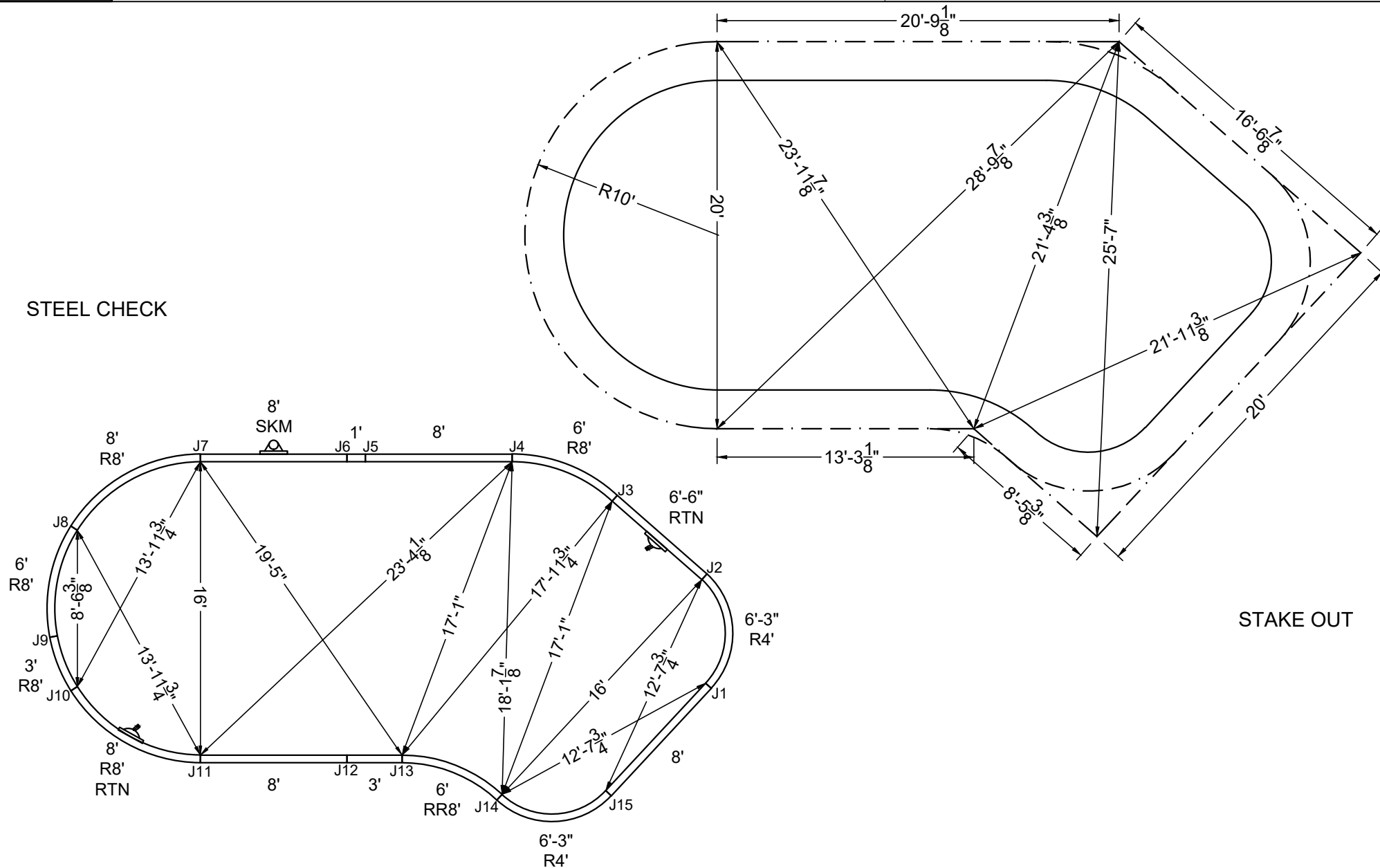
ALL DIMENSIONS ARE FINISHED

DIVING / SLIDE EQUIPMENT DISCLAIMER:

THE BOTTOM CONFIGURATION SHOWN MEETS WITH THE CURRENT IPSC MINIMUM STANDARDS FOR POOLS APPROVED FOR THE USE WITH MANUFACTURED DIVING EQUIPMENT. ALL DIVING EQUIPMENT MUST BE INSTALLED AND LOCATED IN ACCORDANCE WITH THE DIVING / SLIDE MANUFACTURER'S RECOMMENDATIONS. IF DIVING EQUIPMENT IS INSTALLED: PLEASE FOLLOW ALL THE DIVING / SLIDE EQUIPMENT MANUFACTURER'S INSTALLATION, USE AND SAFETY INSTRUCTIONS.

MEETS DEPTH AND SHAPE MINIMUM STANDARD ANSI/NSPI5-2003

STEEL CHECK



STAKE OUT

SHAPE : OVAL LAZY-L	SIZE : 16' X 36'-7"	HAND : LEFT	PANEL HEIGHT : 3'-6"	DRAWN BY : NM-BCC
DWG # : MN1637OL419	DATE : 1/18/2017	REVISION # : 01	KIT REF : MN1637OL419-L	B



SHAPE : OVAL LAZY-L	SIZE : 16' X 36'-7"	HAND : RIGHT	PANEL HEIGHT : 3'-6"	PANEL TYPE : 5" TOP
PERIMETER : 92'-0 25/32"	VOLUME : 20,028 US GAL.	SURFACE AREA : 532.696 SQ. FT.	SCALE : N.T.S	DRAWN BY : NM-BCC
DWG # : MN1637OL419	DATE : 1/18/2017	REVISION # : 01	KIT REF : MN1637OL419-R	A



DIVING / SLIDE EQUIPMENT DISCLAIMER:

THE BOTTOM CONFIGURATION SHOWN MEETS WITH THE CURRENT IPSC MINIMUM STANDARDS FOR POOLS APPROVED FOR THE USE WITH MANUFACTURED DIVING EQUIPMENT. ALL DIVING EQUIPMENT MUST BE INSTALLED AND LOCATED IN ACCORDANCE WITH THE DIVING / SLIDE MANUFACTURER'S RECOMMENDATIONS. IF DIVING EQUIPMENT IS INSTALLED: PLEASE FOLLOW ALL THE DIVING / SLIDE EQUIPMENT MANUFACTURER'S INSTALLATION, USE AND SAFETY INSTRUCTIONS.

MEETS DEPTH AND SHAPE MINIMUM STANDARD ANSI/NSPI5-2003



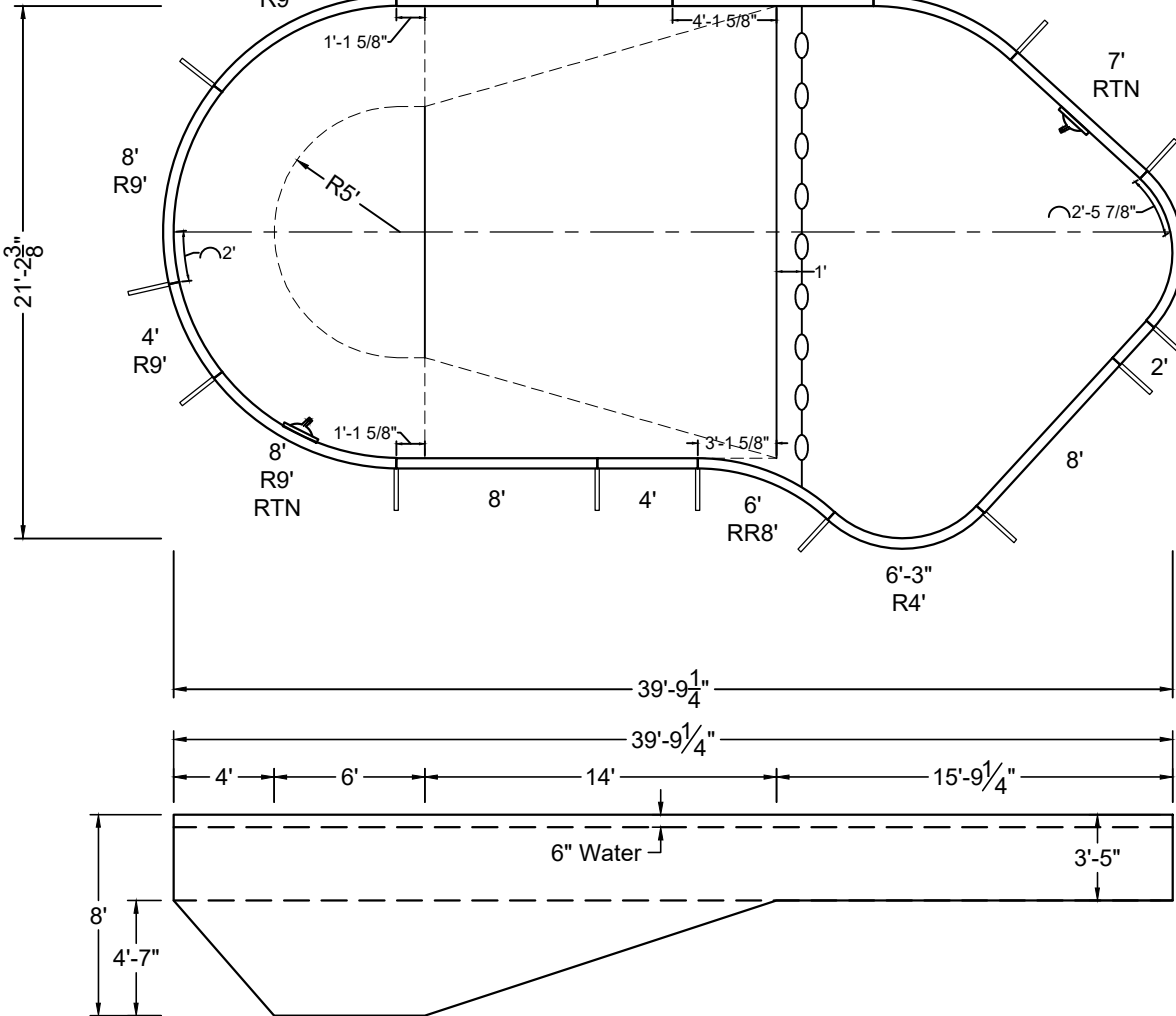
SHAPE : OVAL LAZY-L	SIZE : 16' X 36'-7"	HAND : RIGHT	PANEL HEIGHT : 3'-6"	DRAWN BY : NM-BCC
DWG # : MN1637OL419	DATE : 1/18/2017	REVISION # : 01	KIT REF : MN1637OL419-R	B



DIVING / SLIDE EQUIPMENT DISCLAIMER:

THE BOTTOM CONFIGURATION SHOWN MEETS WITH THE CURRENT IPSC MINIMUM STANDARDS FOR POOLS APPROVED FOR THE USE WITH MANUFACTURED DIVING EQUIPMENT. ALL DIVING EQUIPMENT MUST BE INSTALLED AND LOCATED IN ACCORDANCE WITH THE DIVING / SLIDE MANUFACTURER'S RECOMMENDATIONS. IF DIVING EQUIPMENT IS INSTALLED: PLEASE FOLLOW ALL THE DIVING / SLIDE EQUIPMENT MANUFACTURER'S INSTALLATION, USE AND SAFETY INSTRUCTIONS.

MEETS DEPTH AND SHAPE MINIMUM STANDARD ANSI/NSPI5-2003



SHAPE : OVAL LAZY-L 	SIZE : 18' X 39'-9" 	HAND : LEFT 	PANEL HEIGHT : 3'-6" 	PANEL TYPE : 5" TOP
PERIMETER : 100'-6 25/32" 	VOLUME : 23,856 US GAL. 	SURFACE AREA : 645.036 SQ. FT. 	SCALE : N.T.S 	DRAWN BY : NM-BCC
DWG # : MN1840OL419 	DATE : 1/18/2017 	REVISION # : 01 	KIT REF : MN1840OL419-L 	 A

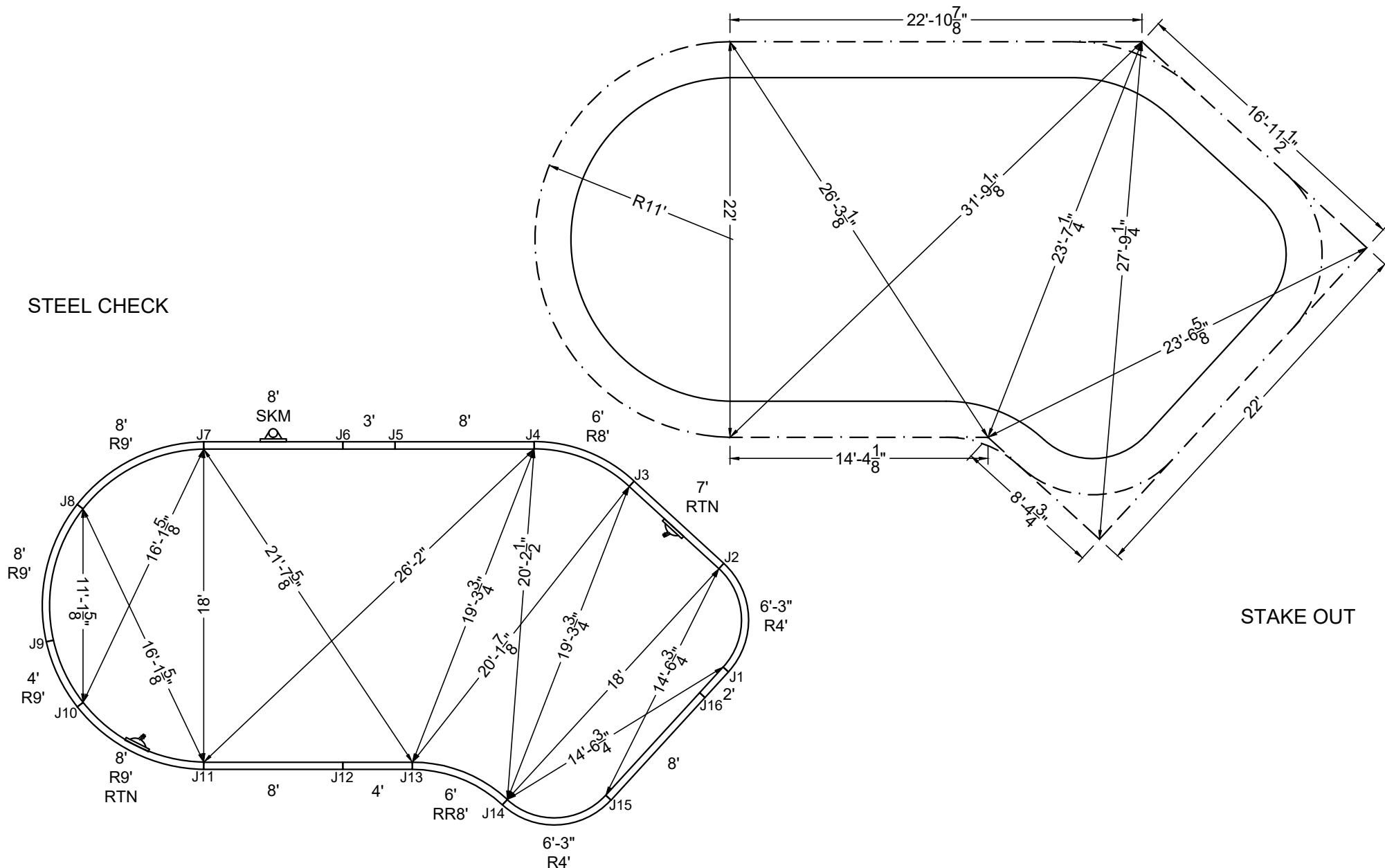
ALL DIMENSIONS ARE FINISHED

DIVING / SLIDE EQUIPMENT DISCLAIMER:

THE BOTTOM CONFIGURATION SHOWN MEETS WITH THE CURRENT ISPS MINIMUM STANDARDS FOR POOLS APPROVED FOR THE USE WITH MANUFACTURED DIVING EQUIPMENT. ALL DIVING EQUIPMENT MUST BE INSTALLED AND LOCATED IN ACCORDANCE WITH THE DIVING / SLIDE MANUFACTURER'S RECOMMENDATIONS. IF DIVING EQUIPMENT IS INSTALLED: PLEASE FOLLOW ALL THE DIVING / SLIDE EQUIPMENT MANUFACTURER'S INSTALLATION, USE AND SAFETY INSTRUCTIONS.

MEETS DEPTH AND SHAPE MINIMUM STANDARD ANSI/NSPI5-2003

STEEL CHECK



SHAPE : OVAL LAZY-L

SIZE : 18' X 39'-9"

HAND : LEFT

PANEL HEIGHT : 3'-6"

DRAWN BY : NM-BCC

DWG # : MN1840OL419

DATE : 1/18/2017

REVISION # : 01

KIT REF : MN1840OL419-L

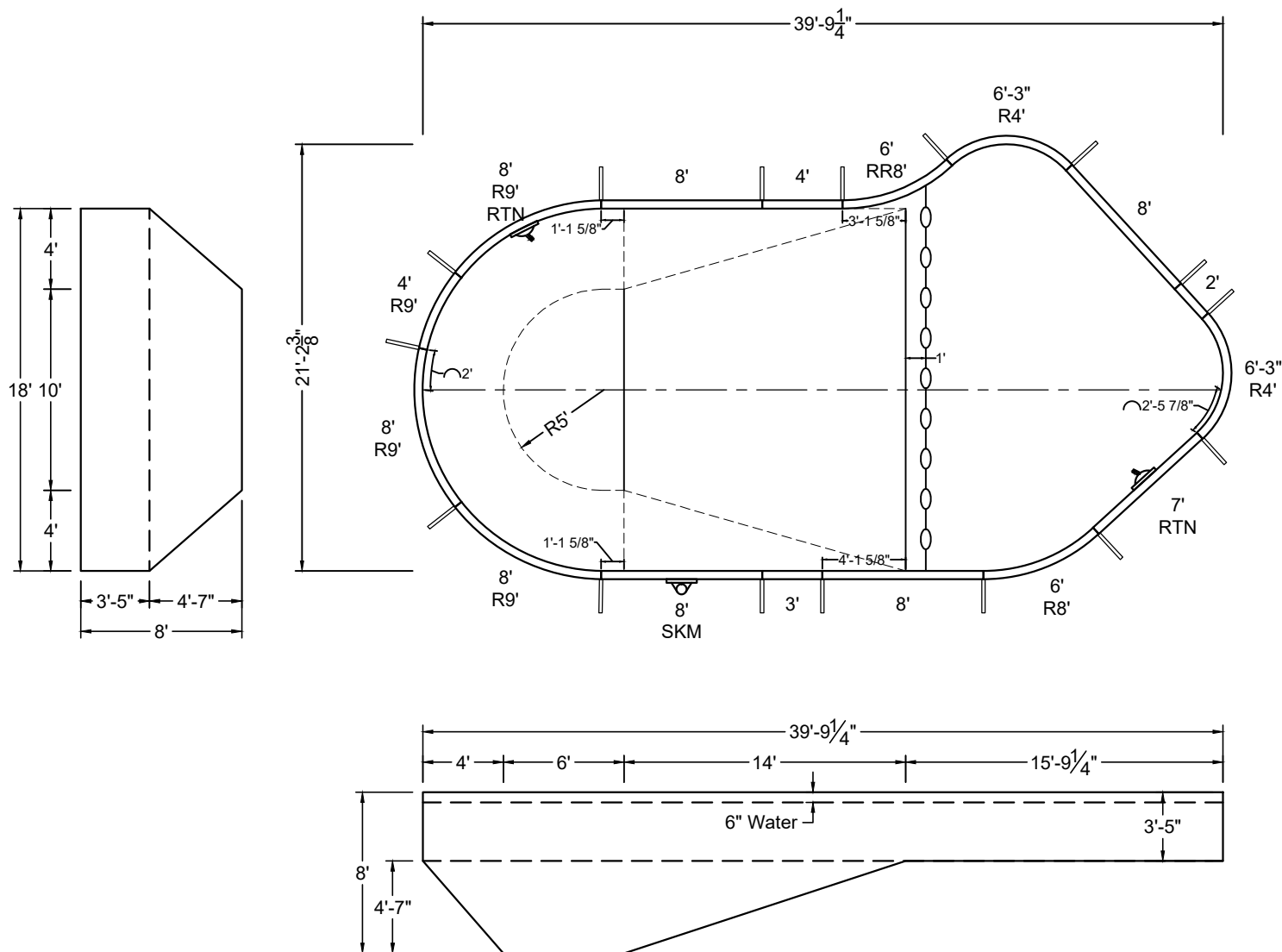
B

ALL DIMENSIONS ARE FINISHED

DIVING / SLIDE EQUIPMENT DISCLAIMER:

THE BOTTOM CONFIGURATION SHOWN MEETS WITH THE CURRENT ISPSC MINIMUM STANDARDS FOR POOLS APPROVED FOR THE USE WITH MANUFACTURED DIVING EQUIPMENT. ALL DIVING EQUIPMENT MUST BE INSTALLED AND LOCATED IN ACCORDANCE WITH THE DIVING / SLIDE MANUFACTURER'S RECOMMENDATIONS. IF DIVING EQUIPMENT IS INSTALLED: PLEASE FOLLOW ALL THE DIVING / SLIDE EQUIPMENT MANUFACTURER'S INSTALLATION, USE AND SAFETY INSTRUCTIONS.

MEETS DEPTH AND SHAPE MINIMUM STANDARD ANSI/NSPI5-2003



SHAPE : OVAL LAZY-L

SIZE : 18' X 39'-9"

HAND : RIGHT

PANEL HEIGHT : 3'-6"

PANEL TYPE : 5" TOP

PERIMETER : 100'-6 25/32"

VOLUME : 23,856 US GAL.

SURFACE AREA : 645.036 SQ. FT.

SCALE : N.T.S

DRAWN BY : NM-BCC

DWG # : MN1840OL419

DATE : 1/18/2017

REVISION # : 01

KIT REF : MN1840OL419-R

A

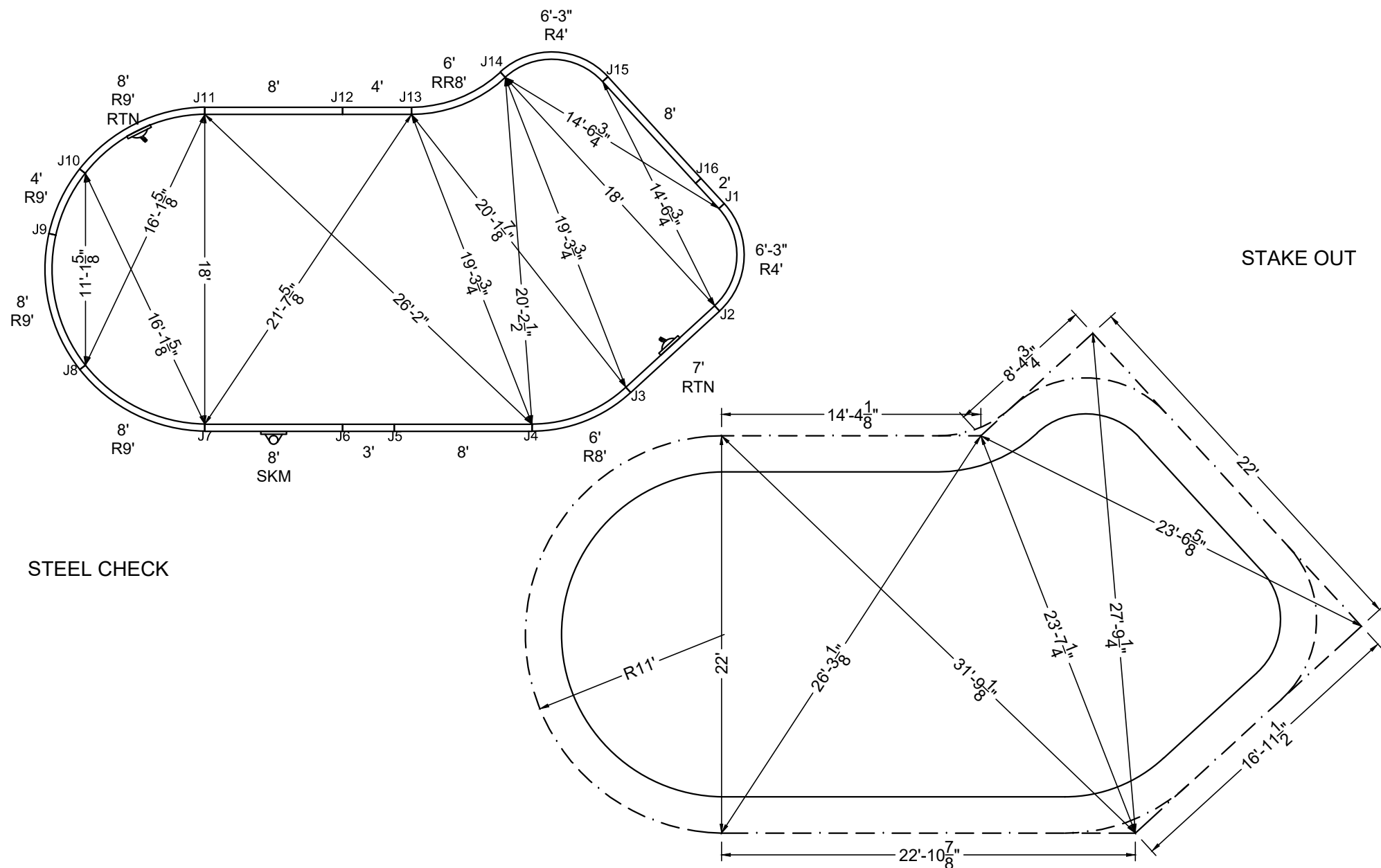


ALL DIMENSIONS ARE FINISHED

DIVING / SLIDE EQUIPMENT DISCLAIMER:

THE BOTTOM CONFIGURATION SHOWN MEETS WITH THE CURRENT IPSC MINIMUM STANDARDS FOR POOLS APPROVED FOR THE USE WITH MANUFACTURED DIVING EQUIPMENT. ALL DIVING EQUIPMENT MUST BE INSTALLED AND LOCATED IN ACCORDANCE WITH THE DIVING / SLIDE MANUFACTURER'S RECOMMENDATIONS. IF DIVING EQUIPMENT IS INSTALLED: PLEASE FOLLOW ALL THE DIVING / SLIDE EQUIPMENT MANUFACTURER'S INSTALLATION, USE AND SAFETY INSTRUCTIONS.

MEETS DEPTH AND SHAPE MINIMUM STANDARD ANSI/NSPI5-2003



SHAPE : OVAL LAZY-L

SIZE :	18' X 39'-9"
--------	--------------

HAND : RIGHT

PANEL HEIGHT :	3'-6"
----------------	-------

DRAWN BY :	NM-BCC
------------	--------

DWG #: MN1840OL419

DATE:	1/18/2017
-------	-----------

REVISION #:	01
-------------	----

KIT REF :	MN1840OL419-R
-----------	---------------

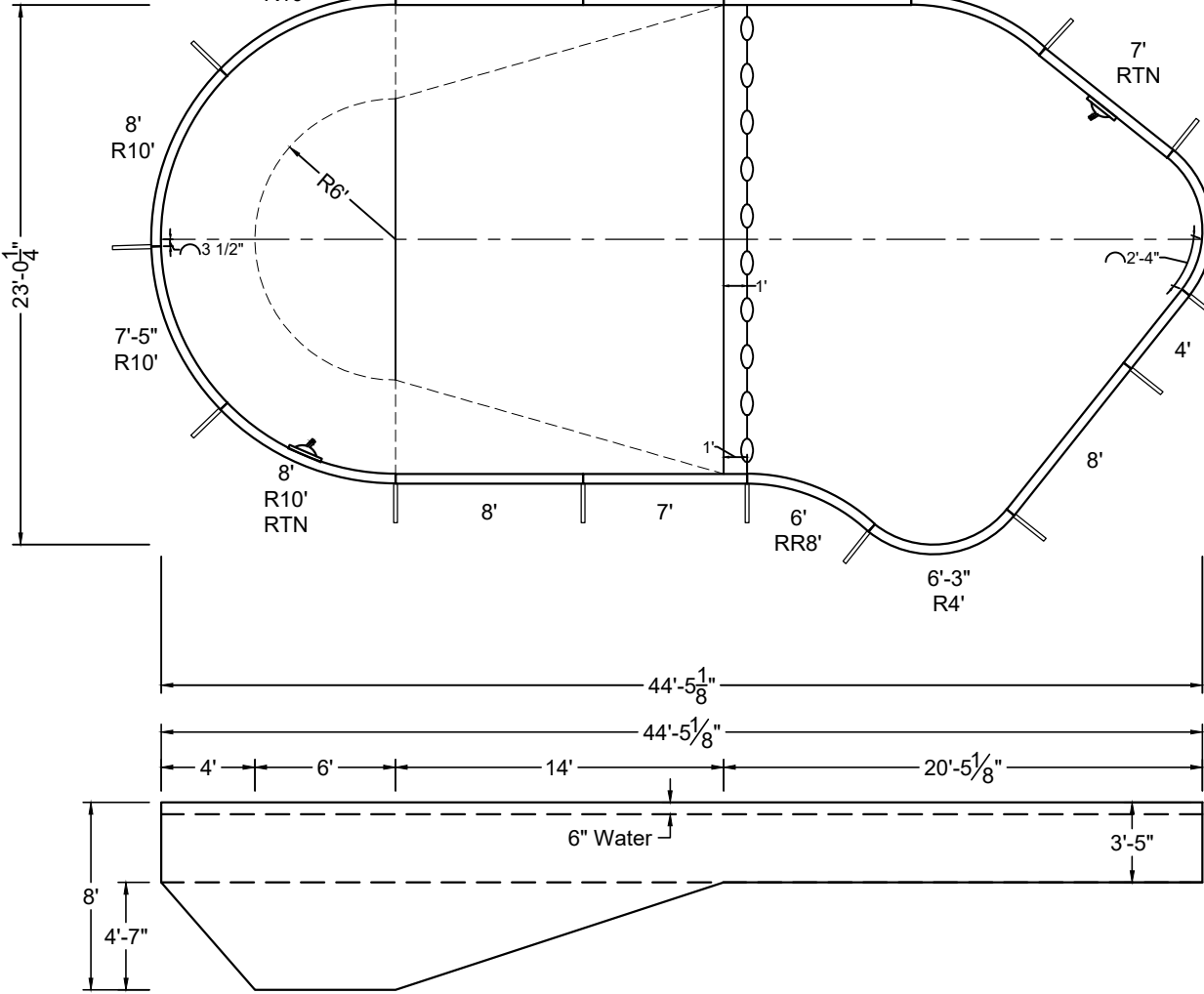
22



DIVING / SLIDE EQUIPMENT DISCLAIMER:

THE BOTTOM CONFIGURATION SHOWN MEETS WITH THE CURRENT IPSC MINIMUM STANDARDS FOR POOLS APPROVED FOR THE USE WITH MANUFACTURED DIVING EQUIPMENT. ALL DIVING EQUIPMENT MUST BE INSTALLED AND LOCATED IN ACCORDANCE WITH THE DIVING / SLIDE MANUFACTURER'S RECOMMENDATIONS. IF DIVING EQUIPMENT IS INSTALLED: PLEASE FOLLOW ALL THE DIVING / SLIDE EQUIPMENT MANUFACTURER'S INSTALLATION, USE AND SAFETY INSTRUCTIONS.

MEETS DEPTH AND SHAPE MINIMUM STANDARD ANSI/NSPI5-2003



SHAPE : OVAL LAZY-L	SIZE : 20' X 44'-5"	HAND : LEFT	PANEL HEIGHT : 3'-6"	PANEL TYPE : 5" TOP
PERIMETER : 111'-11 25/32"	VOLUME : 28,610 US GAL.	SURFACE AREA : 794.300 SQ. FT.	SCALE : N.T.S	DRAWN BY : NM-BCC
DWG # : MN2044OL419	DATE : 1/18/2017	REVISION # : 01	KIT REF : MN2044OL419-L	A



MEGNA
POOLS

Magna Plastic Packaging Corp.

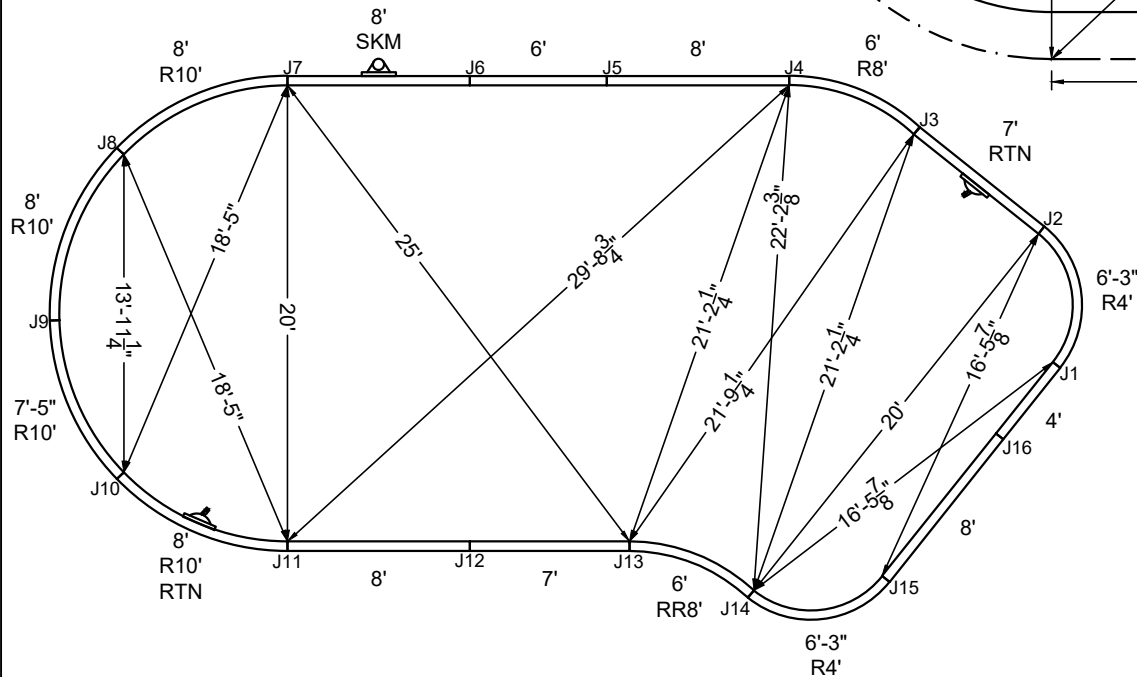
DIVING / SLIDE EQUIPMENT DISCLAIMER:

THE BOTTOM CONFIGURATION SHOWN MEETS WITH THE CURRENT ISPSC MINIMUM STANDARDS FOR POOLS APPROVED FOR THE USE WITH MANUFACTURED DIVING EQUIPMENT. ALL DIVING EQUIPMENT MUST BE INSTALLED AND LOCATED IN ACCORDANCE WITH THE DIVING / SLIDE MANUFACTURER'S RECOMMENDATIONS. IF DIVING EQUIPMENT IS INSTALLED: PLEASE FOLLOW ALL THE DIVING / SLIDE EQUIPMENT MANUFACTURER'S INSTALLATION, USE AND SAFETY INSTRUCTIONS.

MEETS DEPTH AND SHAPE MINIMUM STANDARD ANSI/NSPI5-2003

ALL DIMENSIONS ARE FINISHED

STEEL CHECK

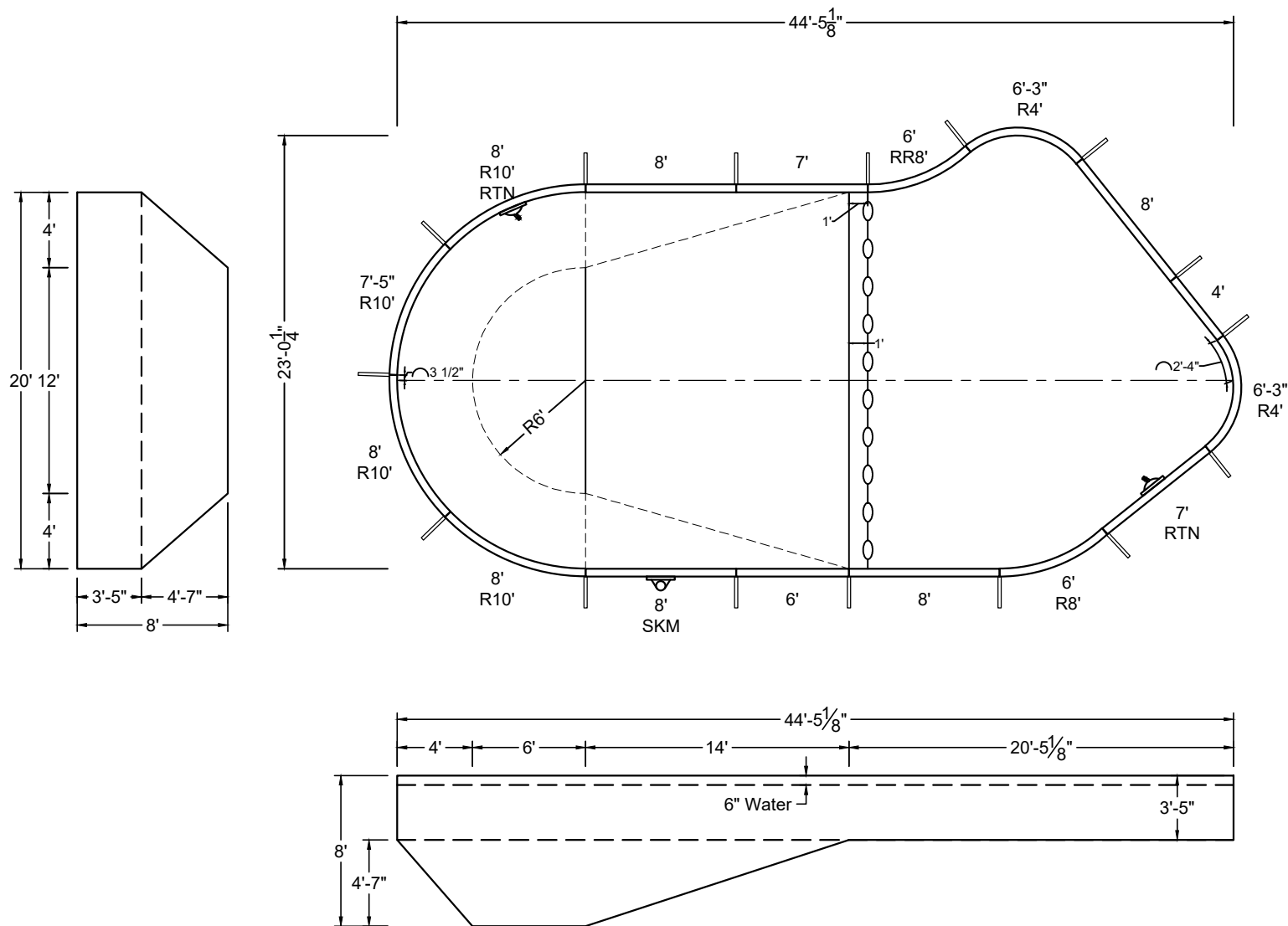


ALL DIMENSIONS ARE FINISHED

DIVING / SLIDE EQUIPMENT DISCLAIMER:

THE BOTTOM CONFIGURATION SHOWN MEETS WITH THE CURRENT ISPSC MINIMUM STANDARDS FOR POOLS APPROVED FOR THE USE WITH MANUFACTURED DIVING EQUIPMENT. ALL DIVING EQUIPMENT MUST BE INSTALLED AND LOCATED IN ACCORDANCE WITH THE DIVING / SLIDE MANUFACTURER'S RECOMMENDATIONS. IF DIVING EQUIPMENT IS INSTALLED: PLEASE FOLLOW ALL THE DIVING / SLIDE EQUIPMENT MANUFACTURER'S INSTALLATION, USE AND SAFETY INSTRUCTIONS.

MEETS DEPTH AND SHAPE MINIMUM STANDARD ANSI/NSPI5-2003



SHAPE : OVAL LAZY-L	SIZE : 20' X 44'-5"	HAND : RIGHT	PANEL HEIGHT : 3'-6"	PANEL TYPE : 5" TOP
PERIMETER : 111'-11 25/32"	VOLUME : 28,610 US GAL.	SURFACE AREA : 794.300 SQ. FT.	SCALE : N.T.S	DRAWN BY : NM-BCC
DWG # : MN2044OL419	DATE : 1/18/2017	REVISION # : 01	KIT REF : MN2044OL419-R	A



DIVING / SLIDE EQUIPMENT DISCLAIMER:

THE BOTTOM CONFIGURATION SHOWN MEETS WITH THE CURRENT IPSC MINIMUM STANDARDS FOR POOLS APPROVED FOR THE USE WITH MANUFACTURED DIVING EQUIPMENT. ALL DIVING EQUIPMENT MUST BE INSTALLED AND LOCATED IN ACCORDANCE WITH THE DIVING / SLIDE MANUFACTURER'S RECOMMENDATIONS. IF DIVING EQUIPMENT IS INSTALLED: PLEASE FOLLOW ALL THE DIVING / SLIDE EQUIPMENT MANUFACTURER'S INSTALLATION, USE AND SAFETY INSTRUCTIONS.

MEETS DEPTH AND SHAPE MINIMUM STANDARD ANSI/NSPI5-2003



STEEL CHECK

SHAPE : OVAL LAZY-L	SIZE : 20' X 44'-5"	HAND : RIGHT	PANEL HEIGHT : 3'-6"	DRAWN BY : NM-BCC
DWG # : MN2044OL419	DATE : 1/18/2017	REVISION # : 01	KIT REF : MN2044OL419-R	B