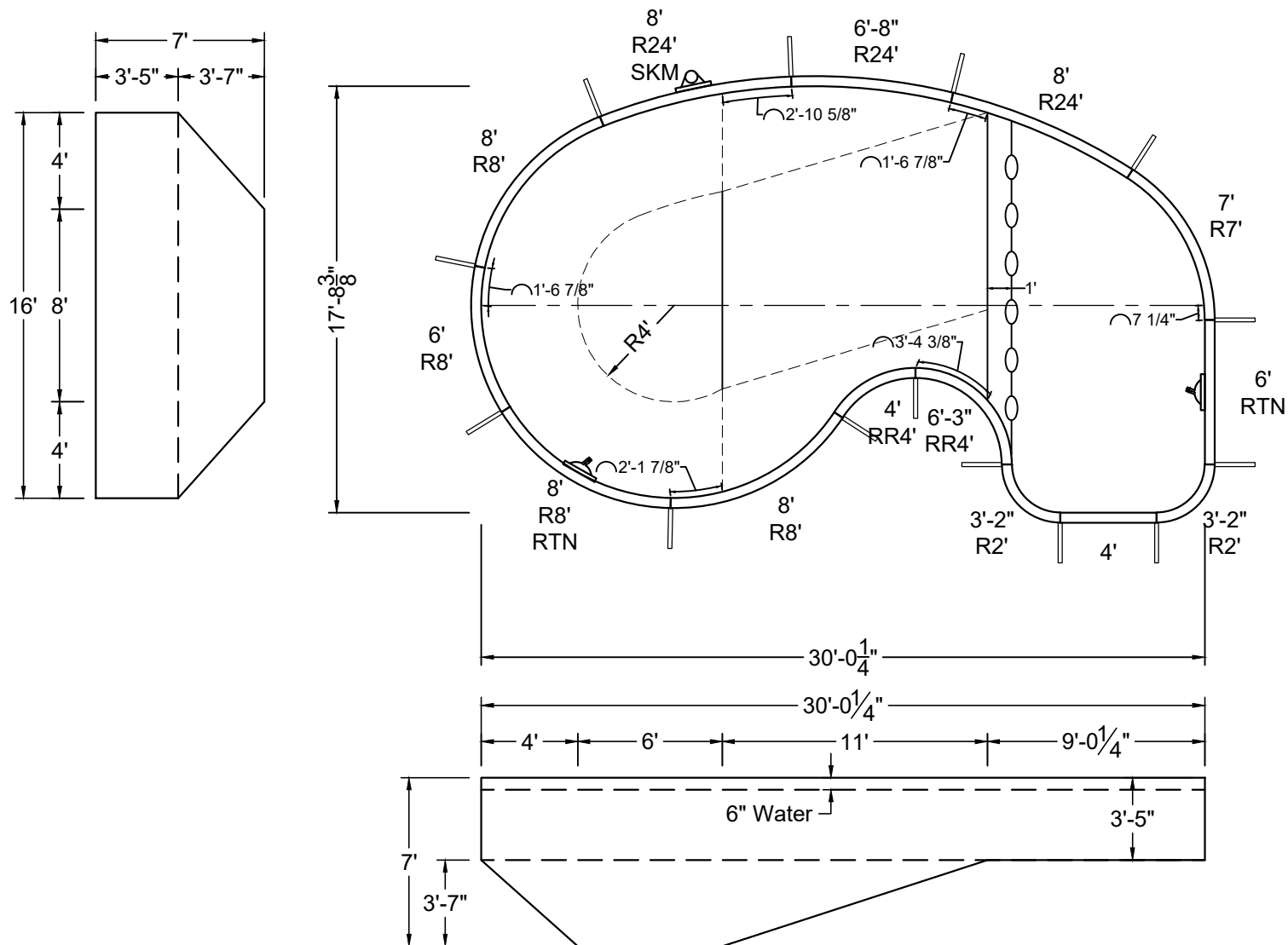


ALL DIMENSIONS ARE FINISHED



**NON-DIVING POOL**  
USE OF DIVING EQUIPMENT IS PROHIBITED

MEETS DEPTH AND SHAPE MINIMUM STANDARD ANSI/NSPI5-2003



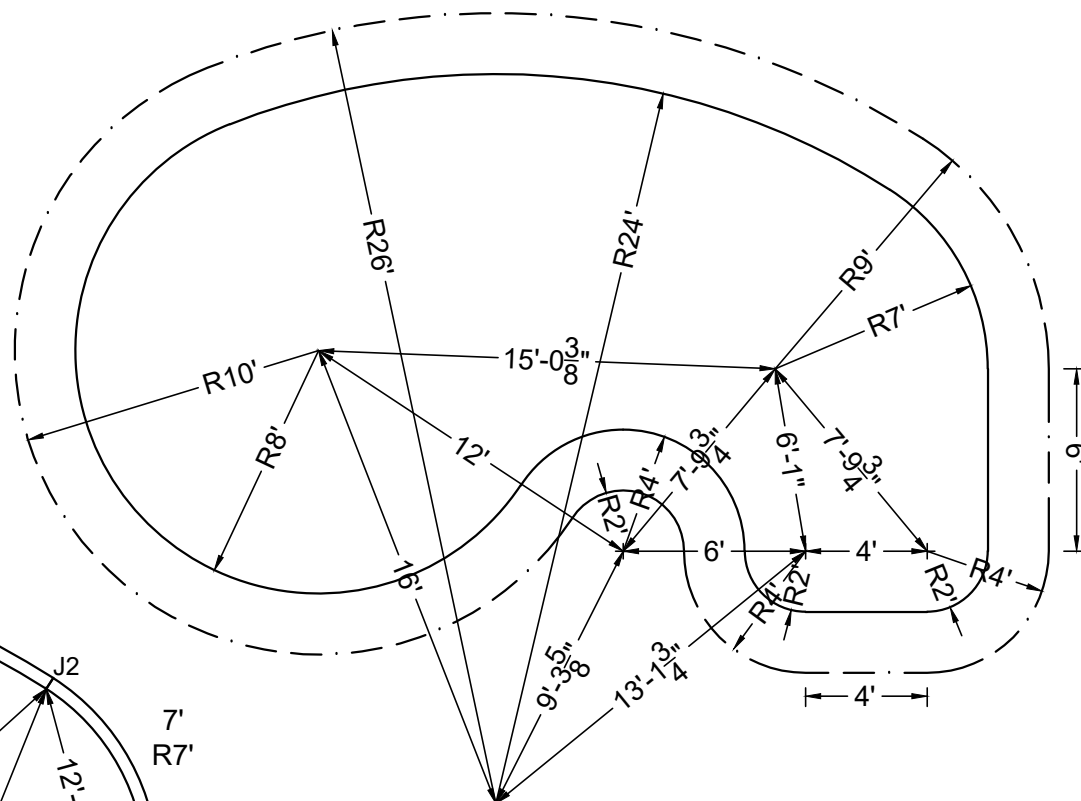
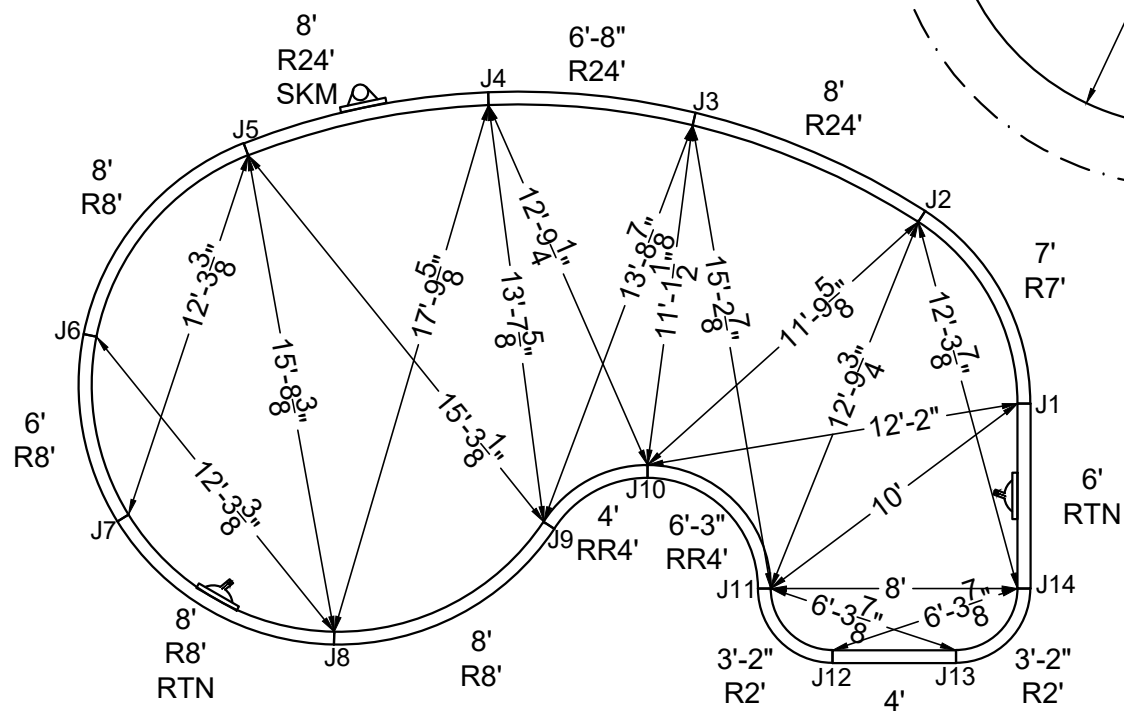
SHAPE : ORBIT	SIZE : 16' X 30'	HAND : LEFT	PANEL HEIGHT : 3'-6"	PANEL TYPE : 5" TOP
PERIMETER : 86'-2 25/32"	VOLUME : 14,553 US GAL.	SURFACE AREA : 403.850 SQ. FT.	SCALE : N.T.S	DRAWN BY : NM-BCC
DWG # : MN1830OR219	DATE : 1/17/2017	REVISION # : 01	KIT REF : MN1830OR219-L	<b>A</b>



MEETS DEPTH AND SHAPE MINIMUM STANDARD ANSI/NSPI5-2003

ALL DIMENSIONS ARE FINISHED

STEEL CHECK



## STAKE OUT

SHAPE : ORBIT

SIZE :	16' X 30'
--------	-----------

HAND :	LEFT
--------	------

PANEL HEIGHT :	3'-6"
----------------	-------

DRAWN BY :	NM-BCC
------------	--------

DWG #: MN1830OR219

DATE :	1/17/2017
--------	-----------

REVISION #:	01
-------------	----

KIT REF :	MN1830OR219-L
-----------	---------------

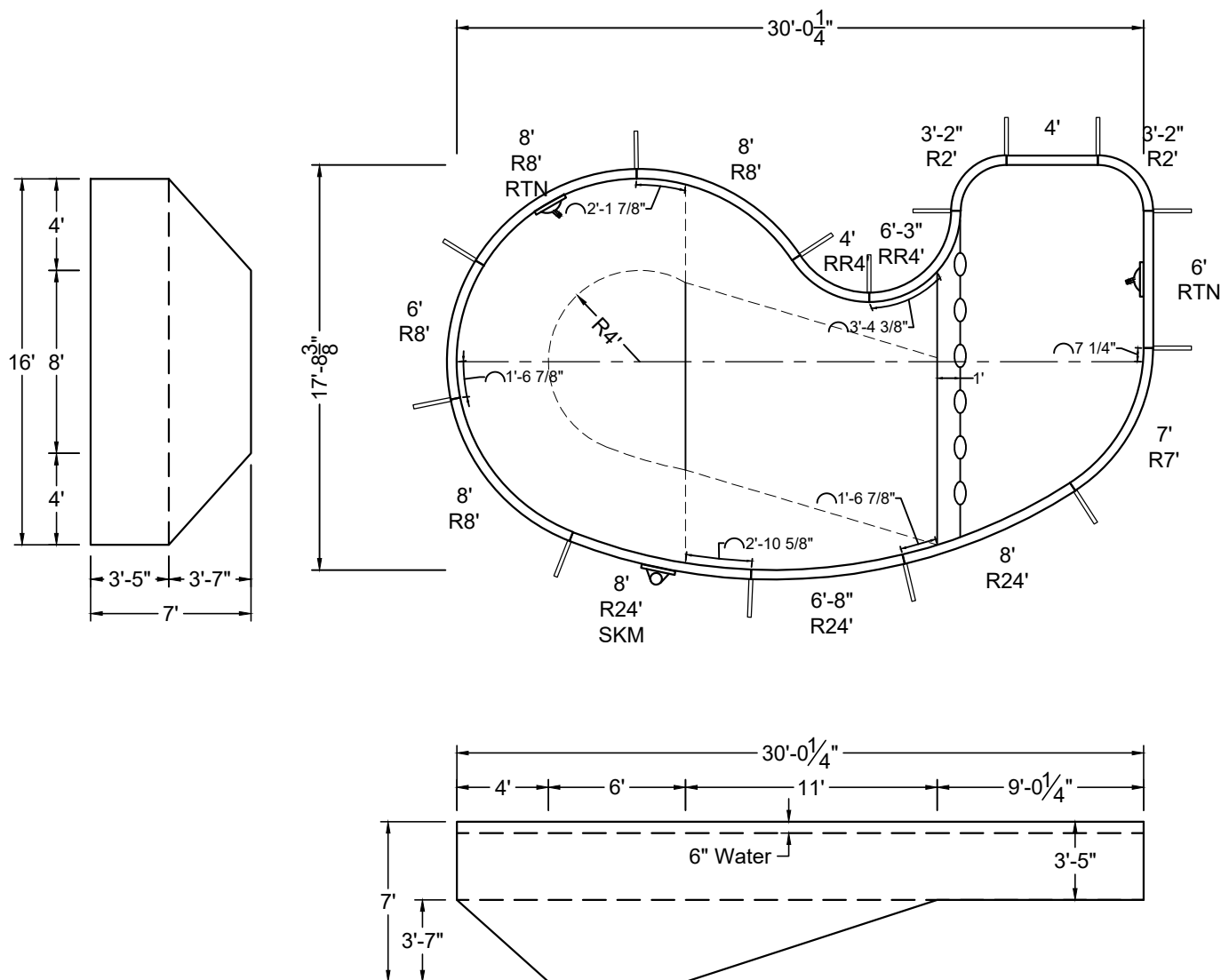
2

ALL DIMENSIONS ARE FINISHED



**NON-DIVING POOL**  
USE OF DIVING EQUIPMENT IS PROHIBITED

MEETS DEPTH AND SHAPE MINIMUM STANDARD ANSI/NSPI5-2003



SHAPE : ORBIT	SIZE : 16' X 30'	HAND : RIGHT	PANEL HEIGHT : 3'-6"	PANEL TYPE : 5" TOP
PERIMETER : 86'-2 25/32"	VOLUME : 14,553 US GAL.	SURFACE AREA : 403.850 SQ. FT.	SCALE : N.T.S	DRAWN BY : NM-BCC
DWG # : MN1830OR219	DATE : 1/17/2017	REVISION # : 01	KIT REF : MN1830OR219-R	<b>A</b>



MEGNA  
POOLS

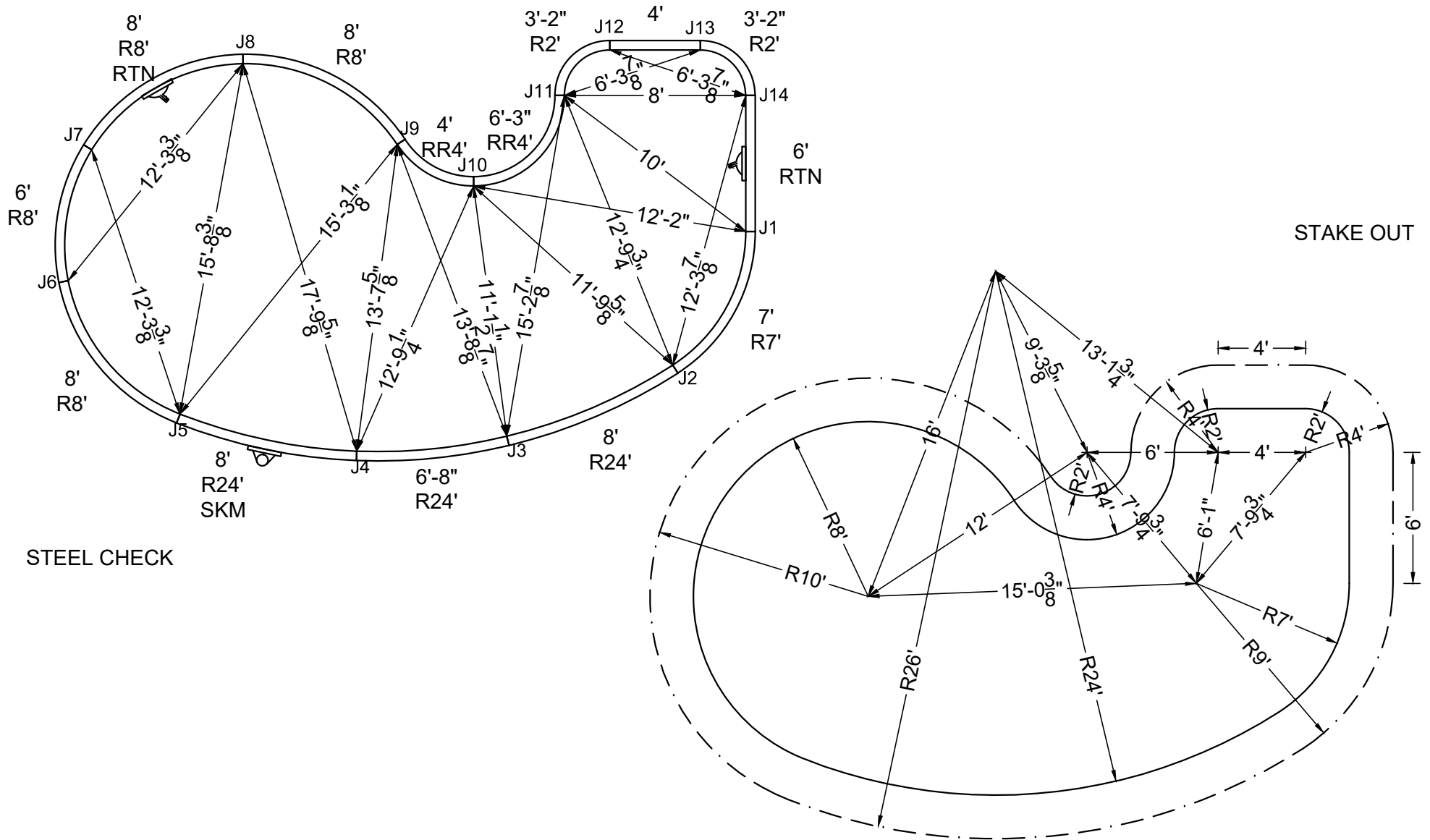
Megna Plastic Packaging Corp.



**NON-DIVING POOL**  
USE OF DIVING EQUIPMENT IS PROHIBITED

MEETS DEPTH AND SHAPE MINIMUM STANDARD ANSI/NSPI5-2003

ALL DIMENSIONS ARE FINISHED



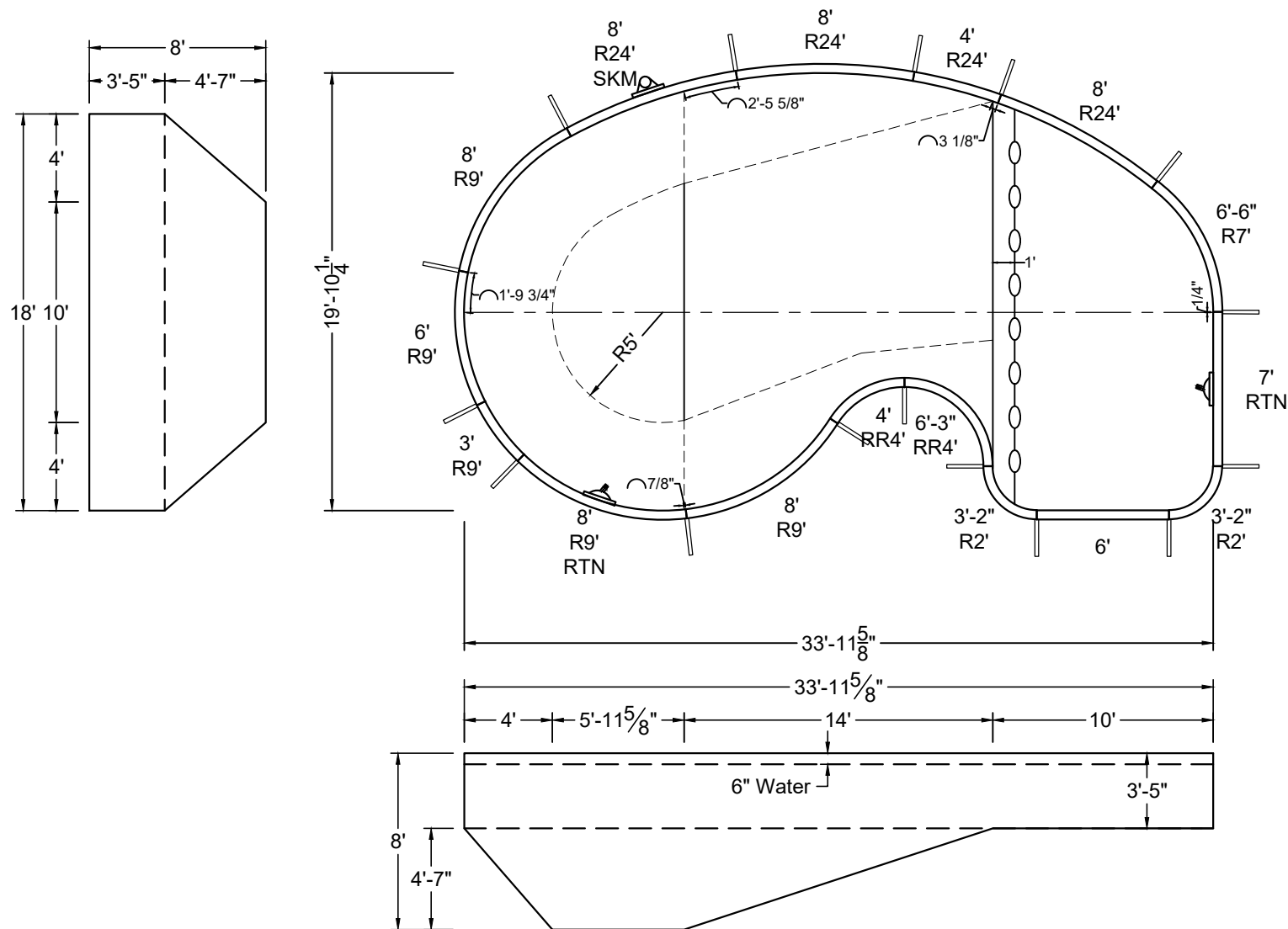
SHAPE : ORBIT	SIZE : 16' X 30'	HAND : RIGHT	PANEL HEIGHT : 3'-6"	DRAWN BY : NM-BCC
DWG # : MN1830OR219	DATE : 1/17/2017	REVISION # : 01	KIT REF : MN1830OR219-R	<b>B</b>

ALL DIMENSIONS ARE FINISHED

**DIVING / SLIDE EQUIPMENT DISCLAIMER:**

THE BOTTOM CONFIGURATION SHOWN MEETS WITH THE CURRENT ISPSC MINIMUM STANDARDS FOR POOLS APPROVED FOR THE USE WITH MANUFACTURED DIVING EQUIPMENT. ALL DIVING EQUIPMENT MUST BE INSTALLED AND LOCATED IN ACCORDANCE WITH THE DIVING / SLIDE MANUFACTURER'S RECOMMENDATIONS. IF DIVING EQUIPMENT IS INSTALLED: PLEASE FOLLOW ALL THE DIVING / SLIDE EQUIPMENT MANUFACTURER'S INSTALLATION, USE AND SAFETY INSTRUCTIONS.

MEETS DEPTH AND SHAPE MINIMUM STANDARD ANSI/NSPI5-2003



SHAPE : ORBIT	SIZE : 18' X 34'	HAND : LEFT	PANEL HEIGHT : 3'-6"	PANEL TYPE : 5" TOP
PERIMETER : 97'-0 25/32"	VOLUME : 20,421 US GAL.	SURFACE AREA : 527.017 SQ. FT.	SCALE : N.T.S	DRAWN BY : NM-BCC
DWG # : MN2034OR219	DATE : 1/17/2017	REVISION # : 01	KIT REF : MN2034OR219-L	<b>A</b>



MEGNA  
POOLS

Magna Plastic Packaging Corp.

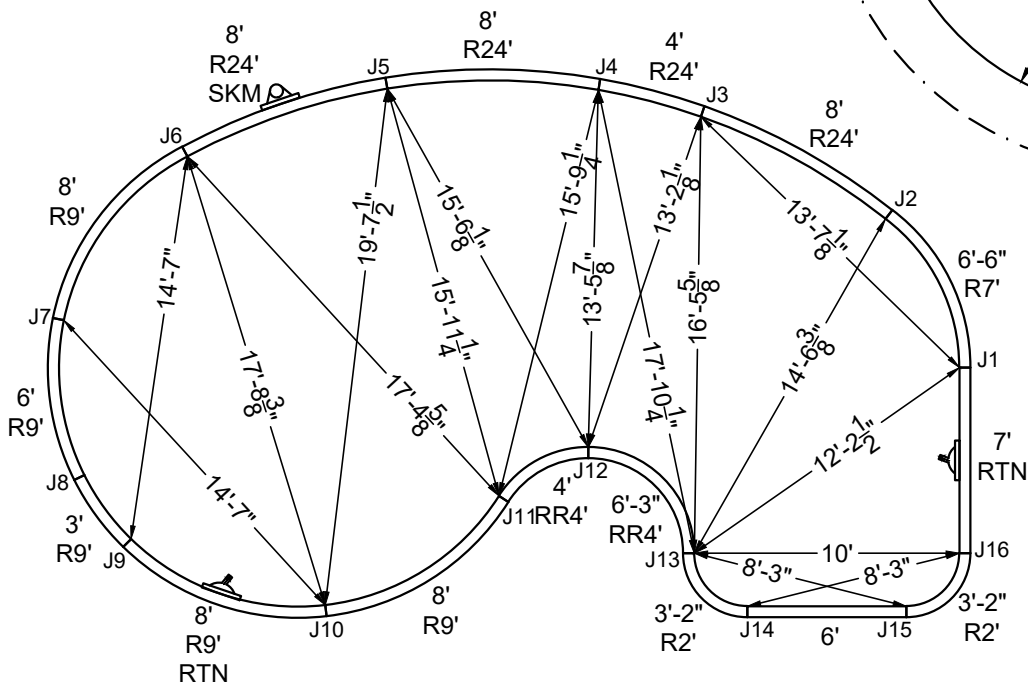
ALL DIMENSIONS ARE FINISHED

DIVING / SLIDE EQUIPMENT DISCLAIMER:

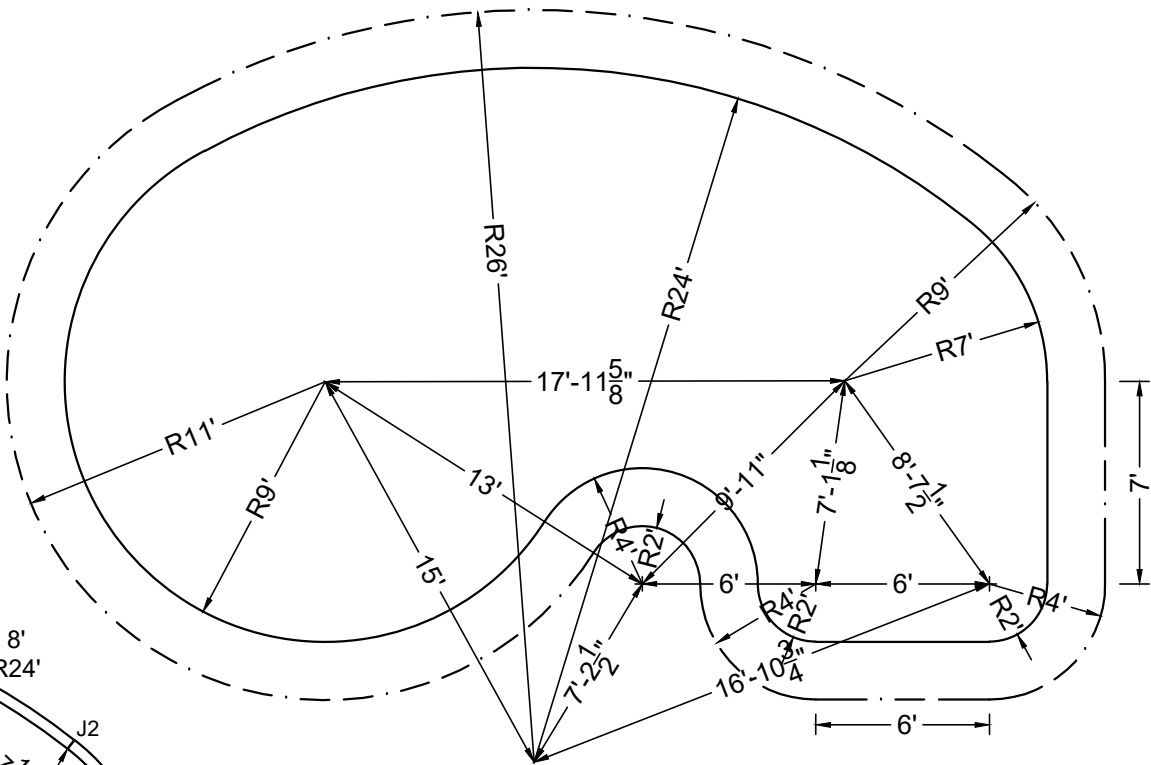
THE BOTTOM CONFIGURATION SHOWN MEETS WITH THE CURRENT ISPCS MINIMUM STANDARDS FOR POOLS APPROVED FOR THE USE WITH MANUFACTURED DIVING EQUIPMENT. ALL DIVING EQUIPMENT MUST BE INSTALLED AND LOCATED IN ACCORDANCE WITH THE DIVING / SLIDE MANUFACTURER'S RECOMMENDATIONS. IF DIVING EQUIPMENT IS INSTALLED: PLEASE FOLLOW ALL THE DIVING / SLIDE EQUIPMENT MANUFACTURER'S INSTALLATION, USE AND SAFETY INSTRUCTIONS.

MEETS DEPTH AND SHAPE MINIMUM STANDARD ANSI/NSPI5-2003

STEEL CHECK



STAKE OUT



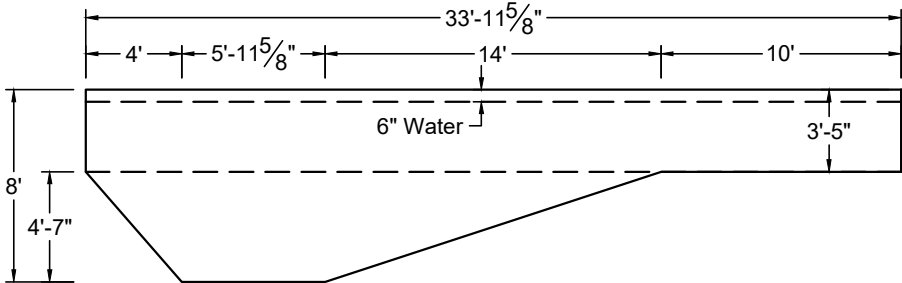
SHAPE : ORBIT	SIZE : 18' X 34'	HAND : LEFT	PANEL HEIGHT : 3'-6"	DRAWN BY : NM-BCC
DWG # : MN2034OR219	DATE : 1/17/2017	REVISION # : 01	KIT REF : MN2034OR219-L	<b>B</b>



## DIVING / SLIDE EQUIPMENT DISCLAIMER:

THE BOTTOM CONFIGURATION SHOWN MEETS WITH THE CURRENT IPSC MINIMUM STANDARDS FOR POOLS APPROVED FOR THE USE WITH MANUFACTURED DIVING EQUIPMENT. ALL DIVING EQUIPMENT MUST BE INSTALLED AND LOCATED IN ACCORDANCE WITH THE DIVING / SLIDE MANUFACTURER'S RECOMMENDATIONS. IF DIVING EQUIPMENT IS INSTALLED: PLEASE FOLLOW ALL THE DIVING / SLIDE EQUIPMENT MANUFACTURER'S INSTALLATION, USE AND SAFETY INSTRUCTIONS.

MEETS DEPTH AND SHAPE MINIMUM STANDARD ANSI/NSPI5-2003



SHAPE : ORBIT	SIZE : 18' X 34'	HAND : RIGHT	PANEL HEIGHT : 3'-6"	PANEL TYPE : 5" TOP
PERIMETER : 97'-0 25/32"	VOLUME : 20,421 US GAL.	SURFACE AREA : 527.017 SQ. FT.	SCALE : N.T.S	DRAWN BY : NM-BCC
DWG # : MN2034OR219	DATE : 1/17/2017	REVISION # : 01	KIT REF : MN2034OR219-R	<b>A</b>



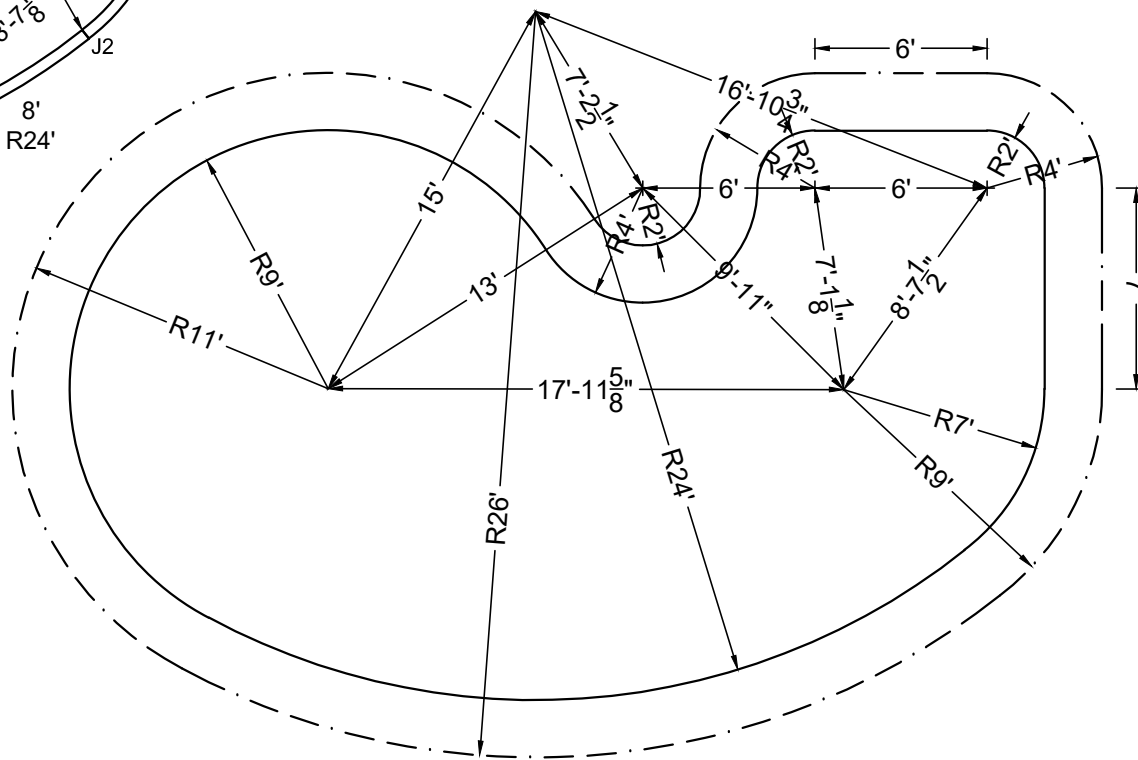
**DIVING / SLIDE EQUIPMENT DISCLAIMER:**

THE BOTTOM CONFIGURATION SHOWN MEETS WITH THE CURRENT IPSC MINIMUM STANDARDS FOR POOLS APPROVED FOR THE USE WITH MANUFACTURED DIVING EQUIPMENT. ALL DIVING EQUIPMENT MUST BE INSTALLED AND LOCATED IN ACCORDANCE WITH THE DIVING / SLIDE MANUFACTURER'S RECOMMENDATIONS. IF DIVING EQUIPMENT IS INSTALLED: PLEASE FOLLOW ALL THE DIVING / SLIDE EQUIPMENT MANUFACTURER'S INSTALLATION, USE AND SAFETY INSTRUCTIONS.

MEETS DEPTH AND SHAPE MINIMUM STANDARD ANSI/NSPI5-2003



## STEEL CHECK



SHAPE : ORBIT	SIZE : 18' X 34'	HAND : RIGHT	PANEL HEIGHT : 3'-6"	DRAWN BY : NM-BCC
DWG # : MN2034OR219	DATE : 1/17/2017	REVISION # : 01	KIT REF : MN2034OR219-R	<b>B</b>

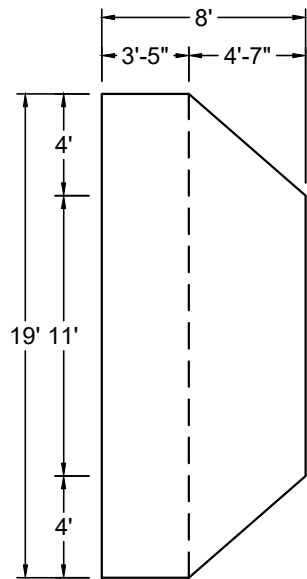




## DIVING / SLIDE EQUIPMENT DISCLAIMER:

THE BOTTOM CONFIGURATION SHOWN MEETS WITH THE CURRENT IPSC MINIMUM STANDARDS FOR POOLS APPROVED FOR THE USE WITH MANUFACTURED DIVING EQUIPMENT. ALL DIVING EQUIPMENT MUST BE INSTALLED AND LOCATED IN ACCORDANCE WITH THE DIVING / SLIDE MANUFACTURER'S RECOMMENDATIONS. IF DIVING EQUIPMENT IS INSTALLED: PLEASE FOLLOW ALL THE DIVING / SLIDE EQUIPMENT MANUFACTURER'S INSTALLATION, USE AND SAFETY INSTRUCTIONS.

MEETS DEPTH AND SHAPE MINIMUM STANDARD ANSI/NSPI5-2003



SHAPE : ORBIT	SIZE : 19' X 36'-1"	HAND : LEFT	PANEL HEIGHT : 3'-6"	PANEL TYPE : 5" TOP
PERIMETER : 103'-1 25/32"	VOLUME : 23,455 US GAL.	SURFACE AREA : 621.811 SQ. FT.	SCALE : N.T.S	DRAWN BY : NM-BCC
DWG # : MN2236OR219	DATE : 1/17/2017	REVISION # : 01	KIT REF : MN2236OR219-L	<b>A</b>

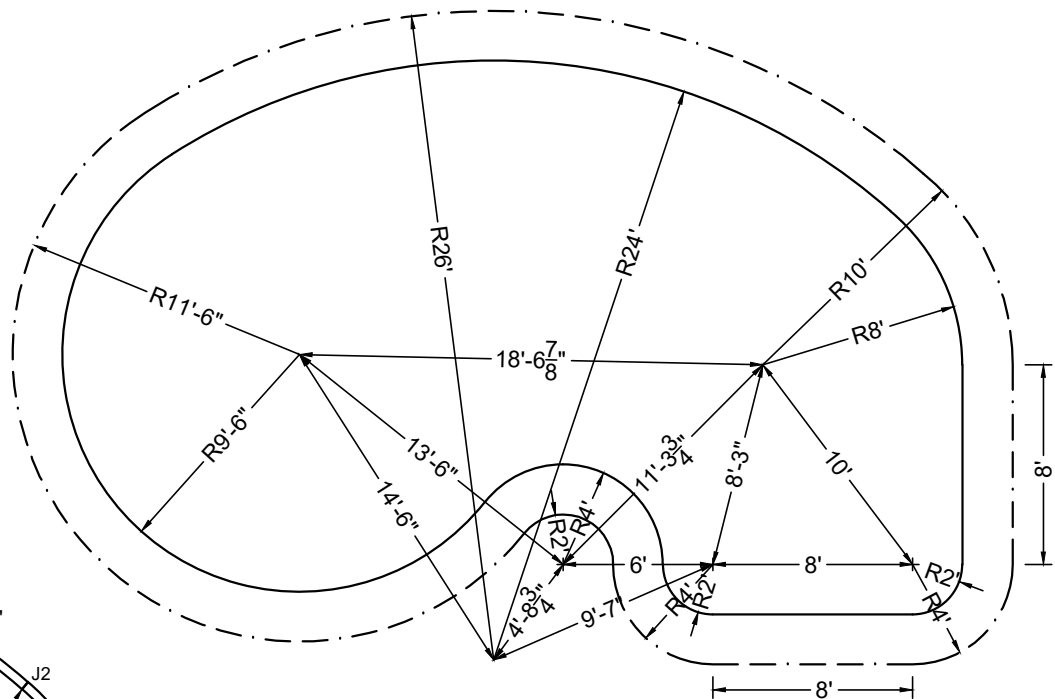
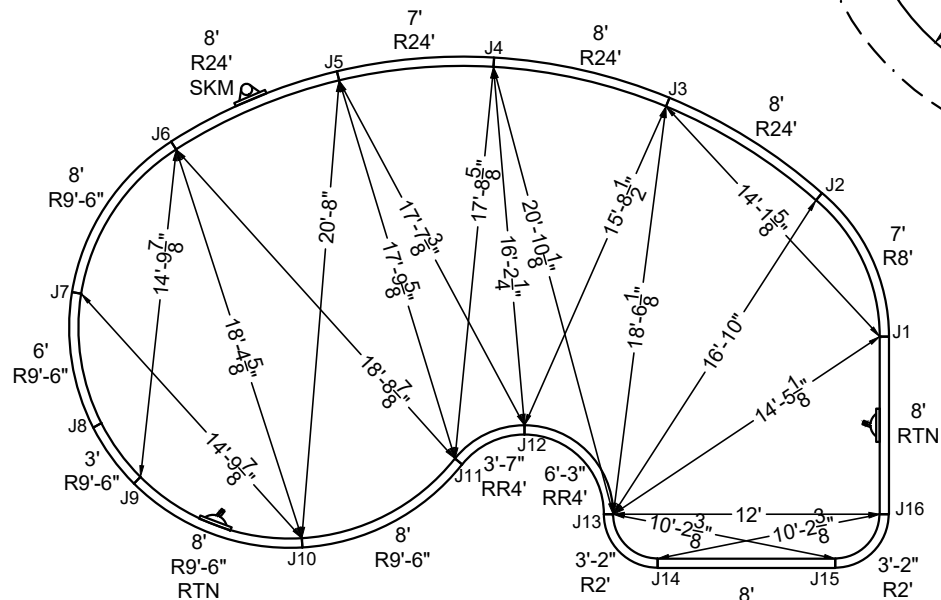
ALL DIMENSIONS ARE FINISHED

DIVING / SLIDE EQUIPMENT DISCLAIMER:

THE BOTTOM CONFIGURATION SHOWN MEETS WITH THE CURRENT ISPS MINIMUM STANDARDS FOR POOLS APPROVED FOR THE USE WITH MANUFACTURED DIVING EQUIPMENT. ALL DIVING EQUIPMENT MUST BE INSTALLED AND LOCATED IN ACCORDANCE WITH THE DIVING / SLIDE MANUFACTURER'S RECOMMENDATIONS. IF DIVING EQUIPMENT IS INSTALLED: PLEASE FOLLOW ALL THE DIVING / SLIDE EQUIPMENT MANUFACTURER'S INSTALLATION, USE AND SAFETY INSTRUCTIONS.

MEETS DEPTH AND SHAPE MINIMUM STANDARD ANSI/NSPI-2003

STEEL CHECK



STAKE OUT

SHAPE : ORBIT

SIZE : 19' X 36'-1"

HAND : LEFT

PANEL HEIGHT : 3'-6"

DRAWN BY : NM-BCC

DWG # : MN2236OR219

DATE : 1/17/2017

REVISION # : 01

KIT REF : MN2236OR219-L

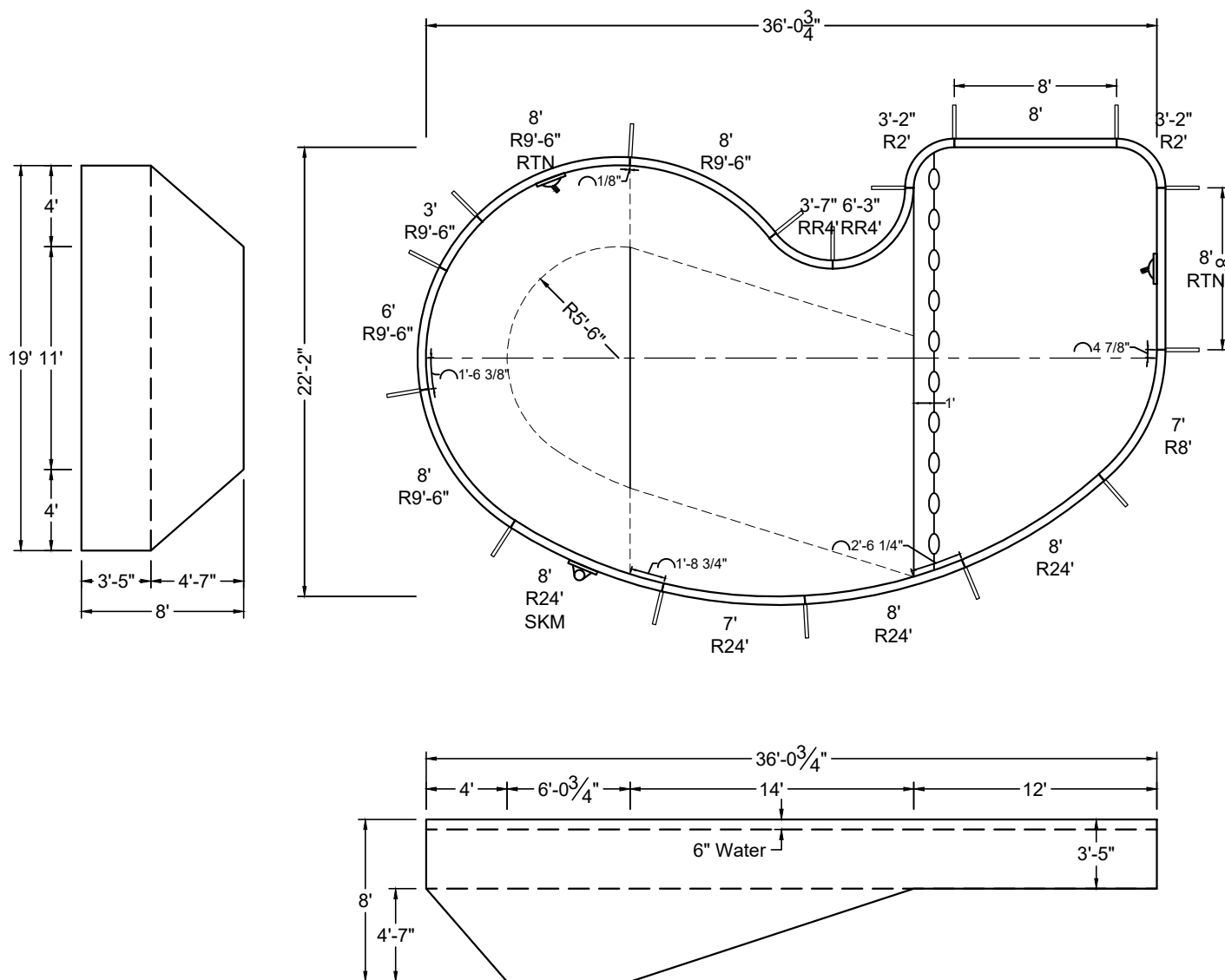
B

ALL DIMENSIONS ARE FINISHED

**DIVING / SLIDE EQUIPMENT DISCLAIMER:**

THE BOTTOM CONFIGURATION SHOWN MEETS WITH THE CURRENT ISPSC MINIMUM STANDARDS FOR POOLS APPROVED FOR THE USE WITH MANUFACTURED DIVING EQUIPMENT. ALL DIVING EQUIPMENT MUST BE INSTALLED AND LOCATED IN ACCORDANCE WITH THE DIVING / SLIDE MANUFACTURER'S RECOMMENDATIONS. IF DIVING EQUIPMENT IS INSTALLED: PLEASE FOLLOW ALL THE DIVING / SLIDE EQUIPMENT MANUFACTURER'S INSTALLATION, USE AND SAFETY INSTRUCTIONS.

MEETS DEPTH AND SHAPE MINIMUM STANDARD ANSI/NSPI-2003



SHAPE : ORBIT	SIZE : 19' X 36'-1"	HAND : RIGHT	PANEL HEIGHT : 3'-6"	PANEL TYPE : 5" TOP
PERIMETER : 103'-1 25/32"	VOLUME : 23,455 US GAL.	SURFACE AREA : 621.811 SQ. FT.	SCALE : N.T.S	DRAWN BY : NM-BCC
DWG # : MN2236OR219	DATE : 1/17/2017	REVISION # : 01	KIT REF : MN2236OR219-R	<b>A</b>



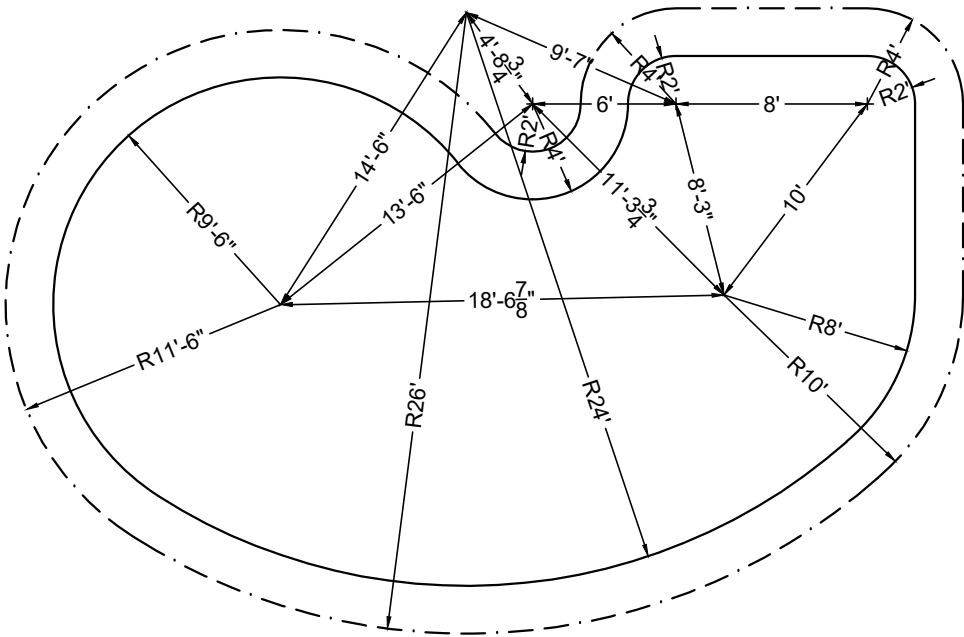
## DIVING / SLIDE EQUIPMENT DISCLAIMER:

THE BOTTOM CONFIGURATION SHOWN MEETS WITH THE CURRENT ISPSC MINIMUM STANDARDS FOR POOLS APPROVED FOR THE USE WITH MANUFACTURED DIVING EQUIPMENT. ALL DIVING EQUIPMENT MUST BE INSTALLED AND LOCATED IN ACCORDANCE WITH THE DIVING / SLIDE MANUFACTURER'S RECOMMENDATIONS. IF DIVING EQUIPMENT IS INSTALLED: PLEASE FOLLOW ALL THE DIVING / SLIDE EQUIPMENT MANUFACTURER'S INSTALLATION, USE AND SAFETY INSTRUCTIONS.

MEETS DEPTH AND SHAPE MINIMUM STANDARD ANSI/NSPI5-2003



## STEEL CHECK



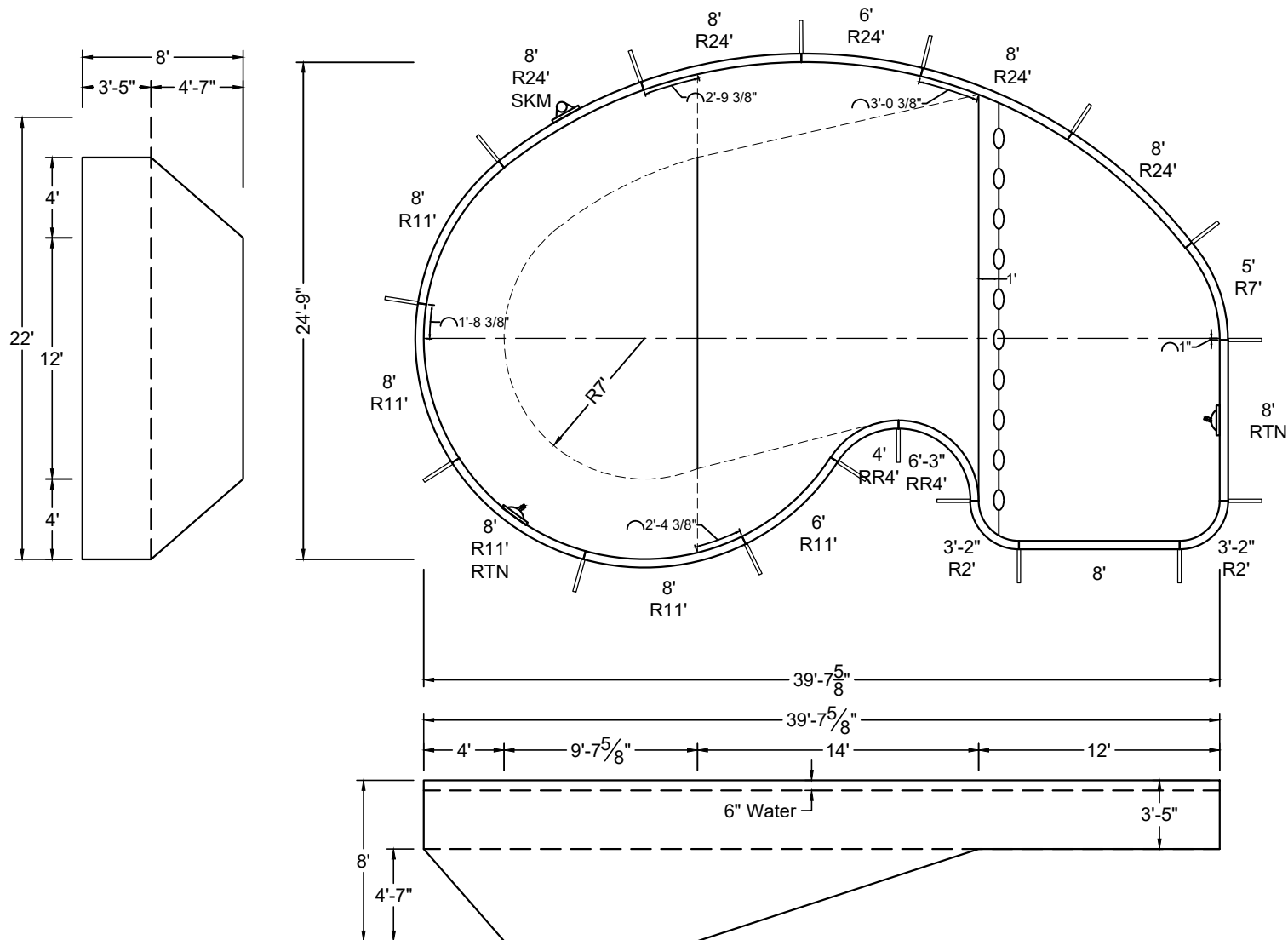
SHAPE : ORBIT	SIZE : 19' X 36'-1"	HAND : RIGHT	PANEL HEIGHT : 3'-6"	DRAWN BY : NM-BCC
DWG # : MN2236OR219	DATE : 1/17/2017	REVISION # : 01	KIT REF : MN2236OR219-R	<b>B</b>

ALL DIMENSIONS ARE FINISHED

DIVING / SLIDE EQUIPMENT DISCLAIMER:

THE BOTTOM CONFIGURATION SHOWN MEETS WITH THE CURRENT ISPSC MINIMUM STANDARDS FOR POOLS APPROVED FOR THE USE WITH MANUFACTURED DIVING EQUIPMENT. ALL DIVING EQUIPMENT MUST BE INSTALLED AND LOCATED IN ACCORDANCE WITH THE DIVING / SLIDE MANUFACTURER'S RECOMMENDATIONS. IF DIVING EQUIPMENT IS INSTALLED: PLEASE FOLLOW ALL THE DIVING / SLIDE EQUIPMENT MANUFACTURER'S INSTALLATION, USE AND SAFETY INSTRUCTIONS.

MEETS DEPTH AND SHAPE MINIMUM STANDARD ANSI/NSPI5-2003



SHAPE : ORBIT	SIZE : 22' X 39'-8"	HAND : LEFT	PANEL HEIGHT : 3'-6"	PANEL TYPE : 5" TOP
PERIMETER : 113'-6 25/32"	VOLUME : 29,280 US GAL.	SURFACE AREA : 754.960 SQ. FT.	SCALE : N.T.S	DRAWN BY : NM-BCC
DWG # : MN2440OR219	DATE : 1/17/2017	REVISION # : 01	KIT REF : MN2440OR219-L	<b>A</b>

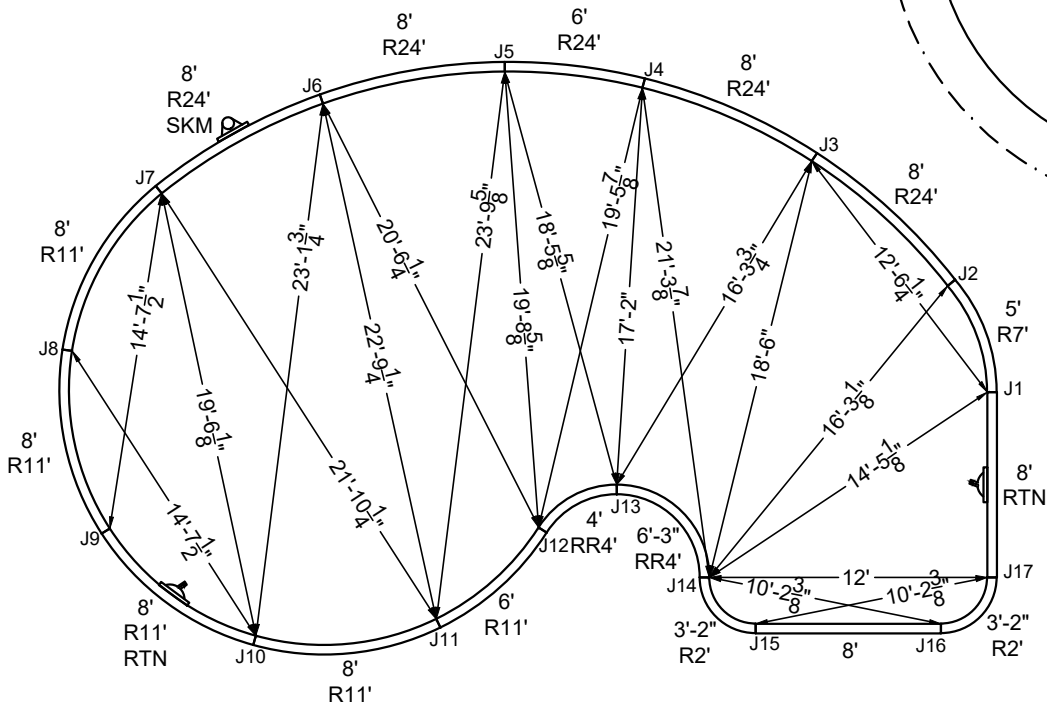


## DIVING / SLIDE EQUIPMENT DISCLAIMER:

THE BOTTOM CONFIGURATION SHOWN MEETS WITH THE CURRENT IPSC MINIMUM STANDARDS FOR POOLS APPROVED FOR THE USE WITH MANUFACTURED DIVING EQUIPMENT. ALL DIVING EQUIPMENT MUST BE INSTALLED AND LOCATED IN ACCORDANCE WITH THE DIVING / SLIDE MANUFACTURER'S RECOMMENDATIONS. IF DIVING EQUIPMENT IS INSTALLED: PLEASE FOLLOW ALL THE DIVING / SLIDE EQUIPMENT MANUFACTURER'S INSTALLATION, USE AND SAFETY INSTRUCTIONS.

MEETS DEPTH AND SHAPE MINIMUM STANDARD ANSI/NSPI5-2003

# STAKE OUT



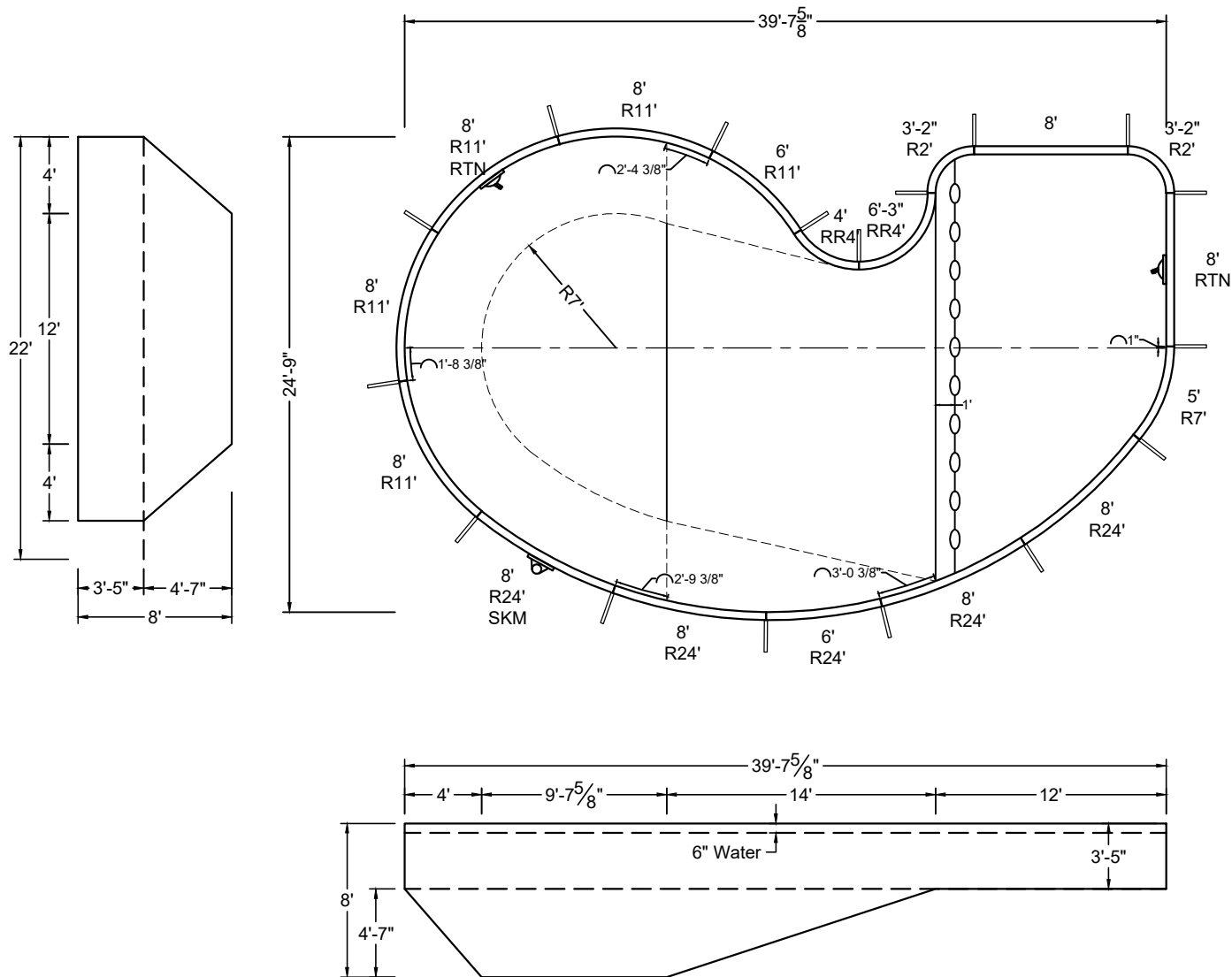
SHAPE : ORBIT	SIZE : 22' X 39'-8"	HAND : LEFT	PANEL HEIGHT : 3'-6"	DRAWN BY : NM-BCC
DWG # : MN2440OR219	DATE : 1/17/2017	REVISION # : 01	KIT REF : MN2440OR219-L	<b>B</b>

ALL DIMENSIONS ARE FINISHED

DIVING / SLIDE EQUIPMENT DISCLAIMER:

THE BOTTOM CONFIGURATION SHOWN MEETS WITH THE CURRENT ISPSC MINIMUM STANDARDS FOR POOLS APPROVED FOR THE USE WITH MANUFACTURED DIVING EQUIPMENT. ALL DIVING EQUIPMENT MUST BE INSTALLED AND LOCATED IN ACCORDANCE WITH THE DIVING / SLIDE MANUFACTURER'S RECOMMENDATIONS. IF DIVING EQUIPMENT IS INSTALLED: PLEASE FOLLOW ALL THE DIVING / SLIDE EQUIPMENT MANUFACTURER'S INSTALLATION, USE AND SAFETY INSTRUCTIONS.

MEETS DEPTH AND SHAPE MINIMUM STANDARD ANSI/NSPI5-2003



SHAPE : ORBIT	SIZE : 22' X 39'-8"	HAND : RIGHT	PANEL HEIGHT : 3'-6"	PANEL TYPE : 5" TOP
PERIMETER : 113'-6 25/32"	VOLUME : 29,280 US GAL.	SURFACE AREA : 754.960 SQ. FT.	SCALE : N.T.S	DRAWN BY : NM-BCC
DWG # : MN2440OR219	DATE : 1/17/2017	REVISION # : 01	KIT REF : MN2440OR219-R	<b>A</b>

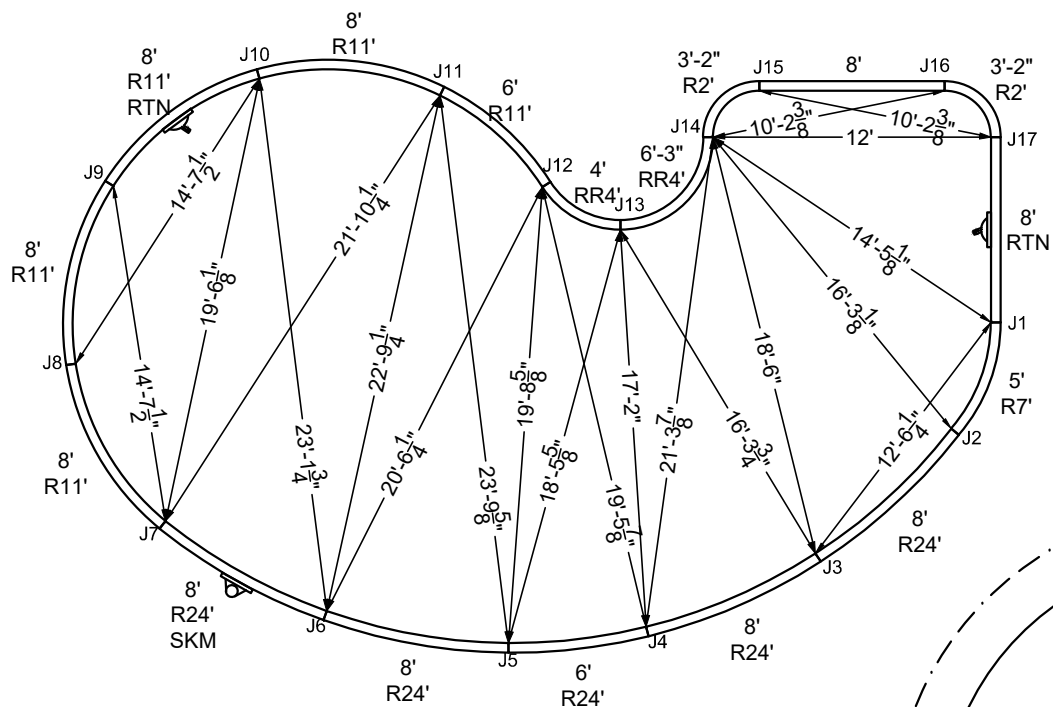


ALL DIMENSIONS ARE FINISHED

**DIVING / SLIDE EQUIPMENT DISCLAIMER:**

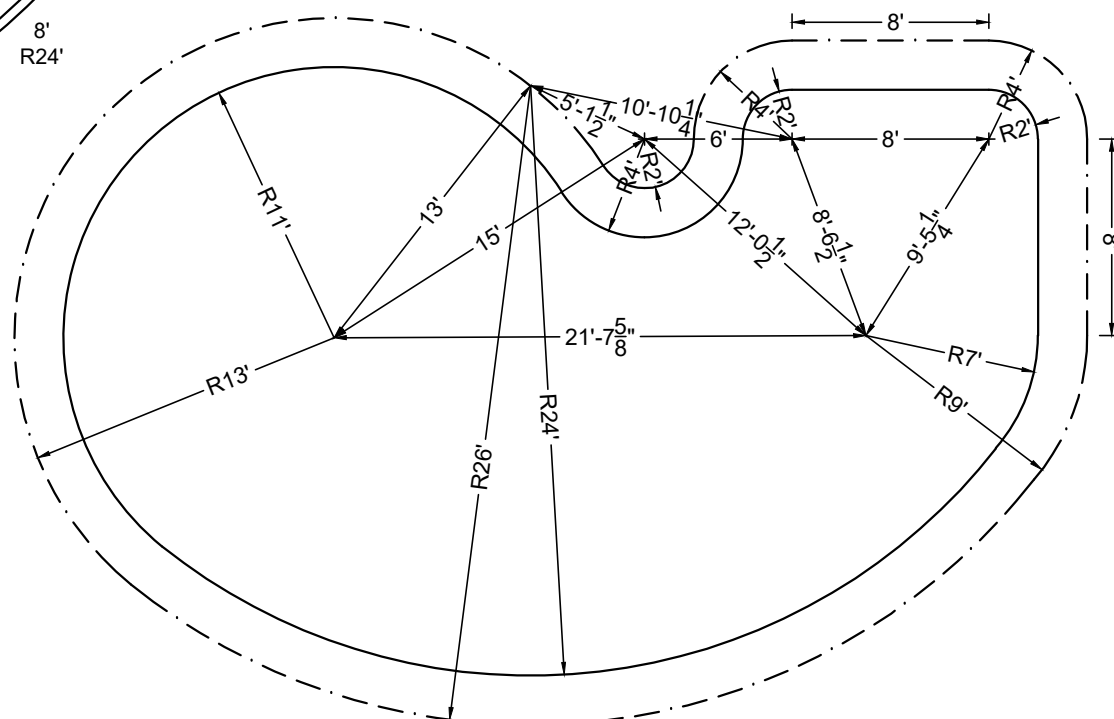
THE BOTTOM CONFIGURATION SHOWN MEETS WITH THE CURRENT IPSC MINIMUM STANDARDS FOR POOLS APPROVED FOR THE USE WITH MANUFACTURED DIVING EQUIPMENT. ALL DIVING EQUIPMENT MUST BE INSTALLED AND LOCATED IN ACCORDANCE WITH THE DIVING / SLIDE MANUFACTURER'S RECOMMENDATIONS. IF DIVING EQUIPMENT IS INSTALLED: PLEASE FOLLOW ALL THE DIVING / SLIDE EQUIPMENT MANUFACTURER'S INSTALLATION, USE AND SAFETY INSTRUCTIONS.

MEETS DEPTH AND SHAPE MINIMUM STANDARD ANSI/NSPI5-2003



## STAKE OUT

STEEL CHECK



SHAPE : ORBIT	SIZE : 22' X 39'-8"	HAND : RIGHT	PANEL HEIGHT : 3'-6"	DRAWN BY : NM-BCC
DWG # : MN2440OR219	DATE : 1/17/2017	REVISION # : 01	KIT REF : MN2440OR219-R	<b>B</b>