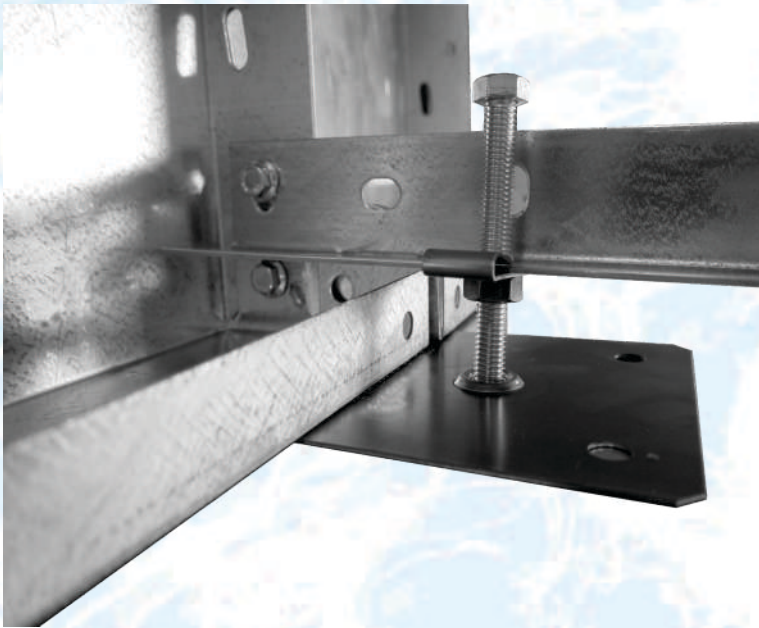


Completely level a pool in MINUTES!

with The **ONLY** Patented

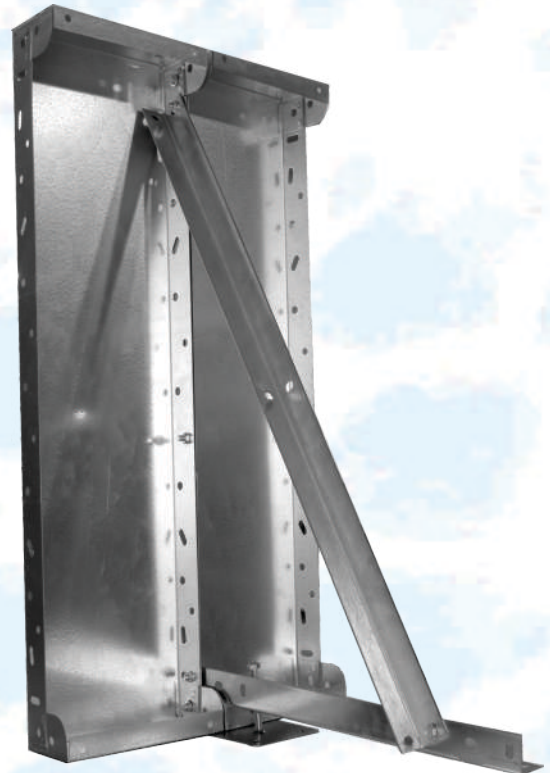
Pool Levelling System!

U.S. Patent 8,028,476 B1
other patents pending



*One man with
a 3/4" socket
is all it takes!*

*Fast !
Accurate !
Professional !*



Available from:



Megna Plastic Packaging Corp. dba:

MEGNA POOLS

Pickering & Sunderland ON and Atlanta GA

1-866-580-1115 www.megnapools.com

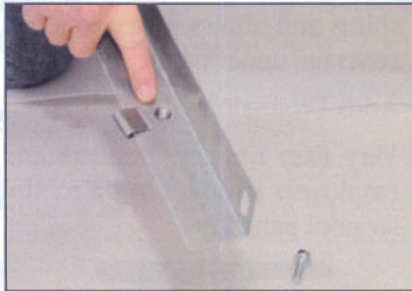
POOL LEVELLING SYSTEM

U.S. Patent 8,028,476 BI
other patents pending

- The **ONLY** precise way to level a modular pool
- Takes minutes to level
- One man with a 3/4" socket and ratchet can do the job
- Eliminates physical lifting of walls to level
- Stops loosening of line stakes by physical lifting
- Eliminates the need for unsightly shims
- Allows better concrete coverage under panels
- Completely Professional look
- Very easy for new installers to adapt to modular pool panels



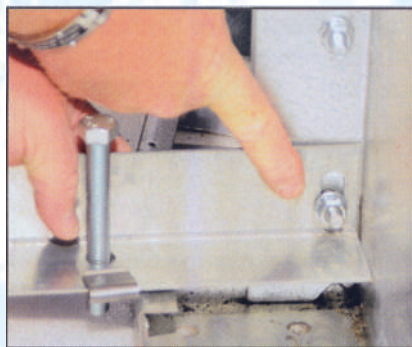
1 - The pre-punched hole in the short angle for clip to be applied



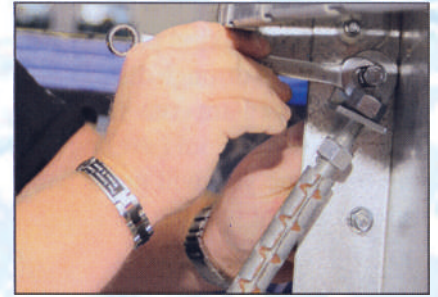
2 - The clip is applied over the pre-punched hole in the short angle



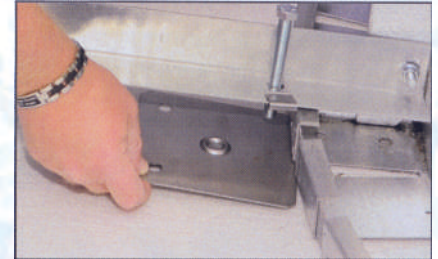
3 - The bolt is installed through pre-punched hole and clip



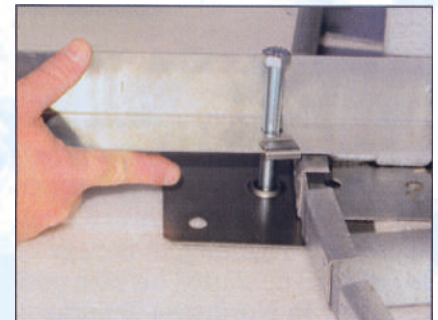
4 - Short angle of A-frame is attached to the panel



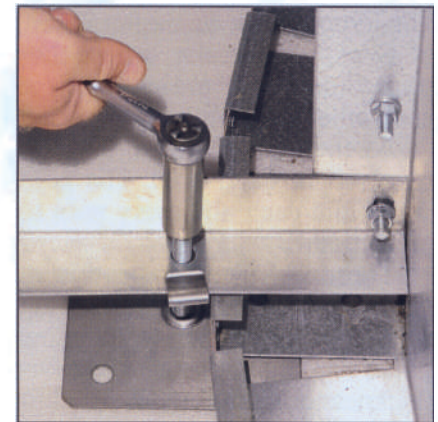
5 - Long angle of A-Frame is attached to the panel



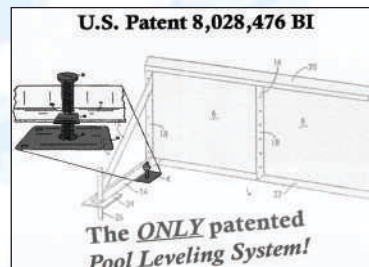
6 - Support plate is placed under the bolt



7 - Support plate is positioned directly under the bolt



8 - Pool is levelled by adjusting each bolt



Mike Alford- Inventor