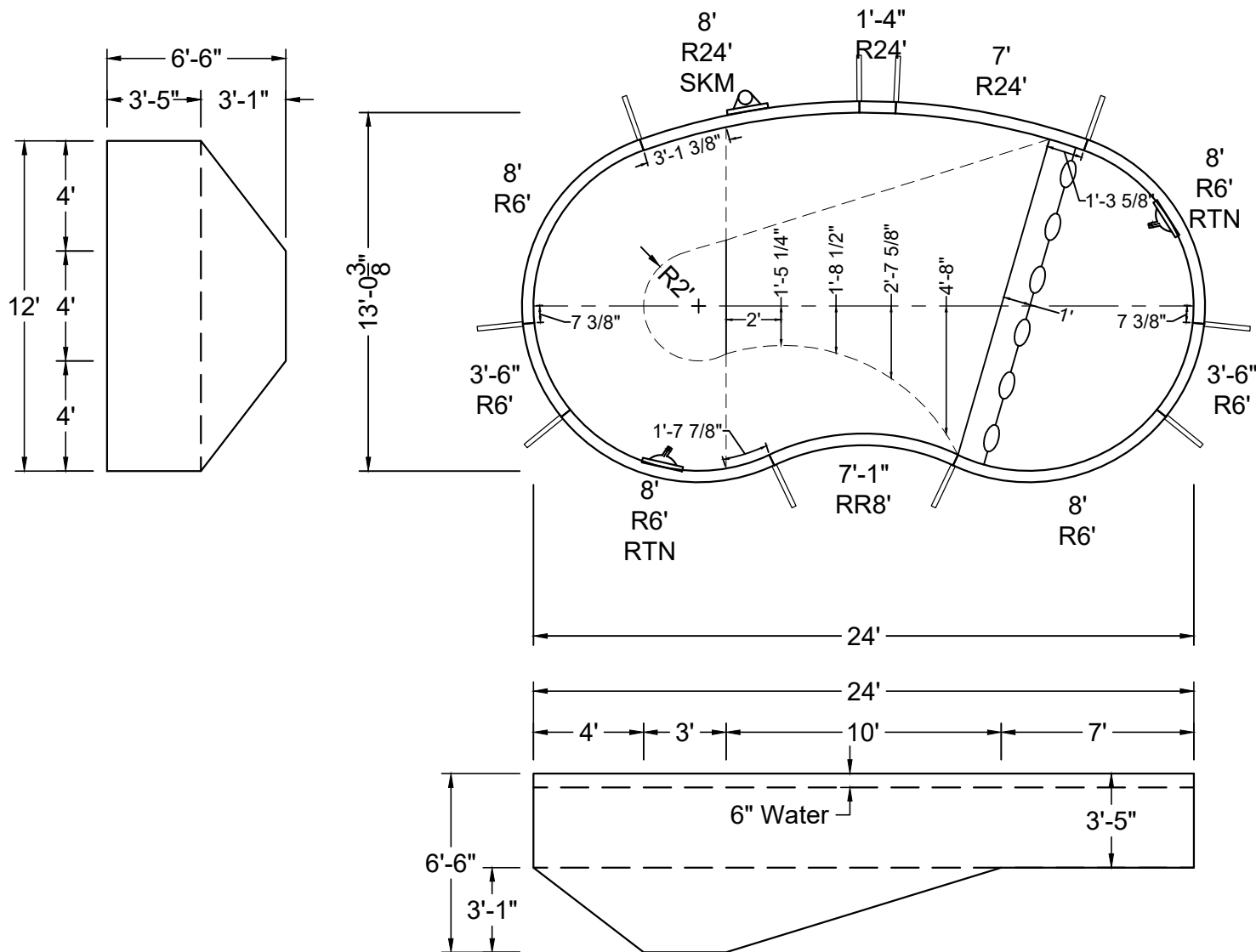


ALL DIMENSIONS ARE FINISHED



NON-DIVING POOL
USE OF DIVING EQUIPMENT IS PROHIBITED

MEETS DEPTH AND SHAPE MINIMUM STANDARD ANSI/NSPI5-2003



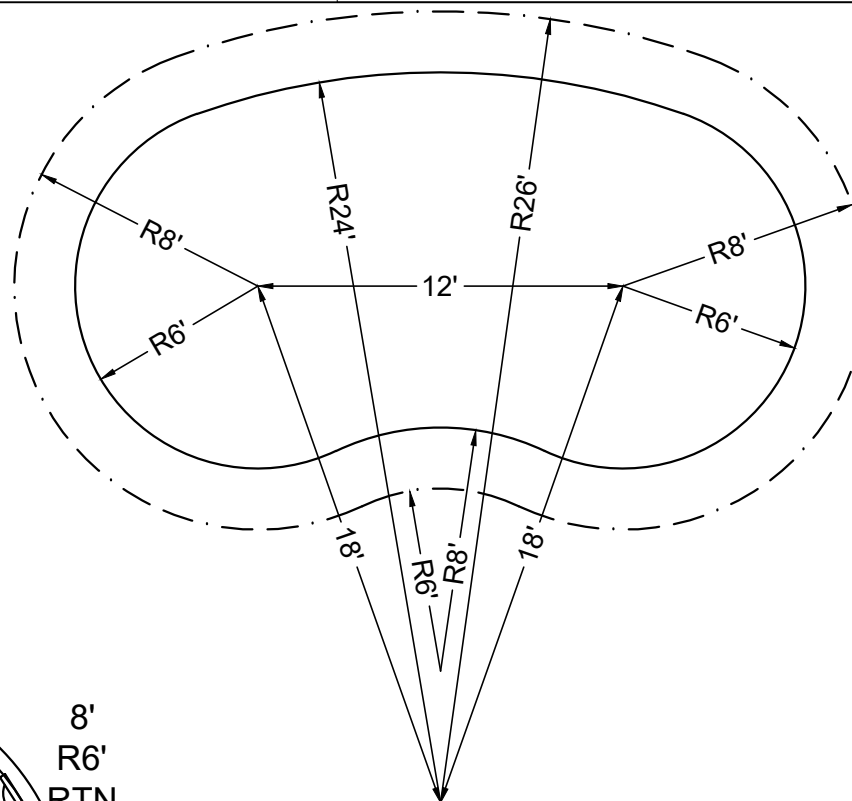
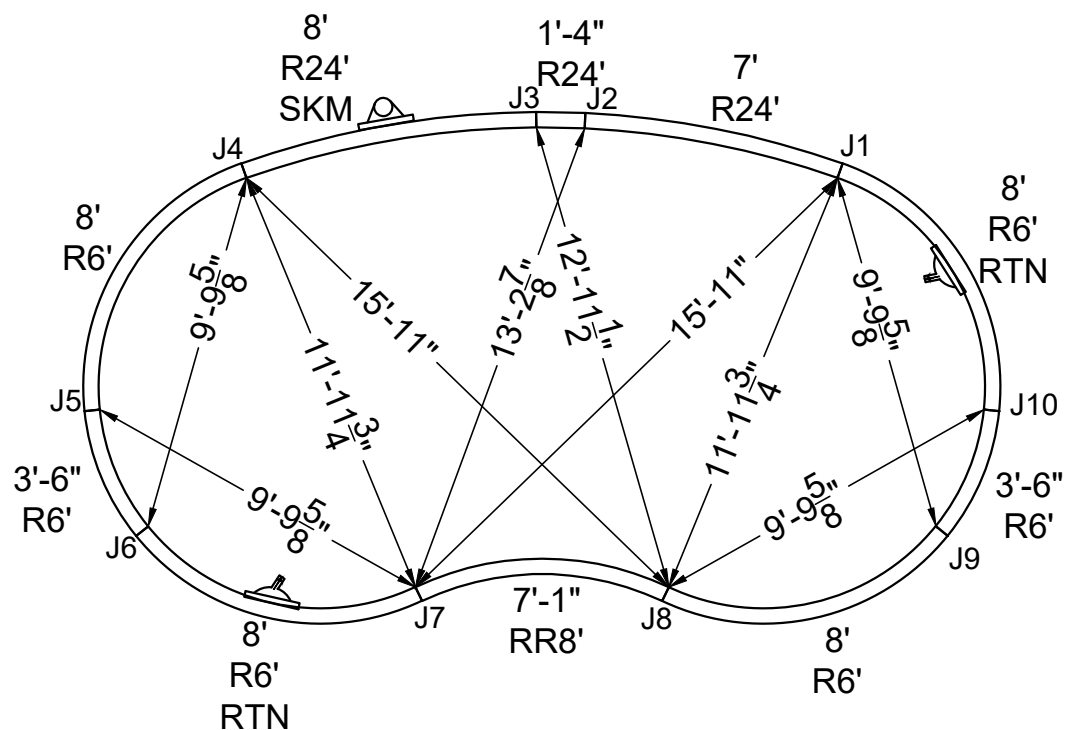
SHAPE: KIDNEY	SIZE: 12' X 24'	HAND: LEFT	PANEL HEIGHT: 3'-6"	PANEL TYPE: 5" TOP
PERIMETER: 62'-4 1/32"	VOLUME: 8,588 US GAL.	SURFACE AREA: 258.279 SQ. FT.	SCALE: N.T.S	DRAWN BY: NM-BCC
DWG #: MN1224KD-19	DATE: 1/11/2017	REVISION #: 01	KIT REF: MN1224KD-19-L	A



MEETS DEPTH AND SHAPE MINIMUM STANDARD ANSI/NSPI5-2003

ALL DIMENSIONS ARE FINISHED

STEEL CHECK



STAKE OUT

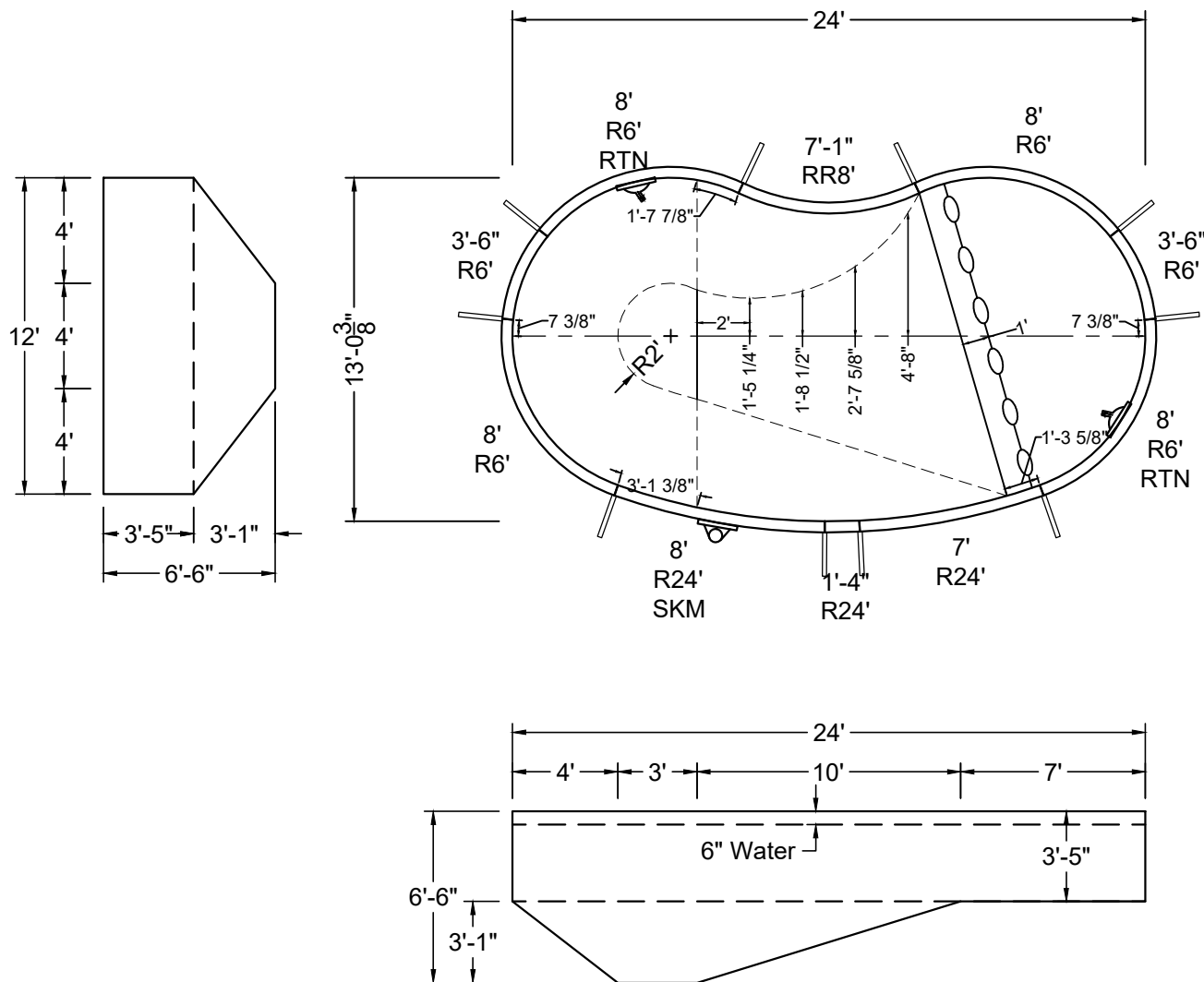
SHAPE : KIDNEY	SIZE : 12' X 24'	HAND : LEFT	PANEL HEIGHT : 3'-6"	DRAWN BY : NM-BCC
DWG # : MN1224KD-19	DATE : 1/11/2017	REVISION # : 01	KIT REF : MN1224KD-19-L	B

ALL DIMENSIONS ARE FINISHED



NON-DIVING POOL
USE OF DIVING EQUIPMENT IS PROHIBITED

MEETS DEPTH AND SHAPE MINIMUM STANDARD ANSI/NSPI5-2003



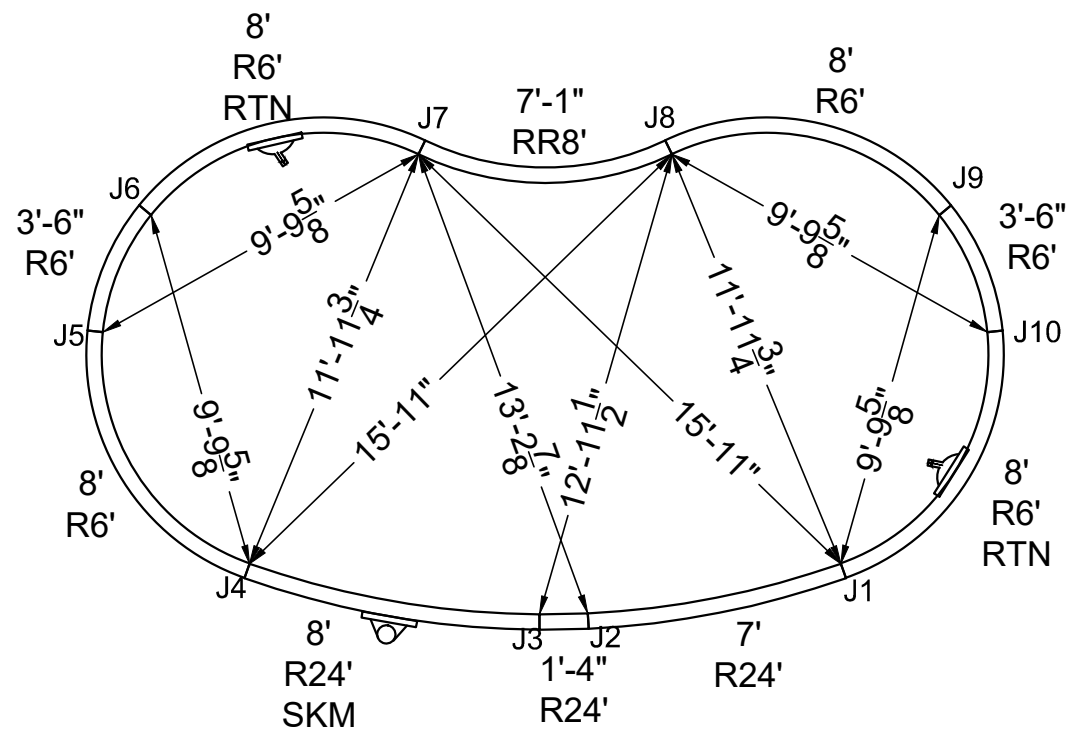
SHAPE : KIDNEY	SIZE : 12' X 24'	HAND : RIGHT	PANEL HEIGHT : 3'-6"	PANEL TYPE : 5" TOP
PERIMETER : 62'-4 1/32"	VOLUME : 8,588 US GAL.	SURFACE AREA : 258.279 SQ. FT.	SCALE : N.T.S	DRAWN BY : NM-BCC
DWG # : MN1224KD-19	DATE : 1/11/2017	REVISION # : 01	KIT REF : MN1224KD-19-R	A

ALL DIMENSIONS ARE FINISHED



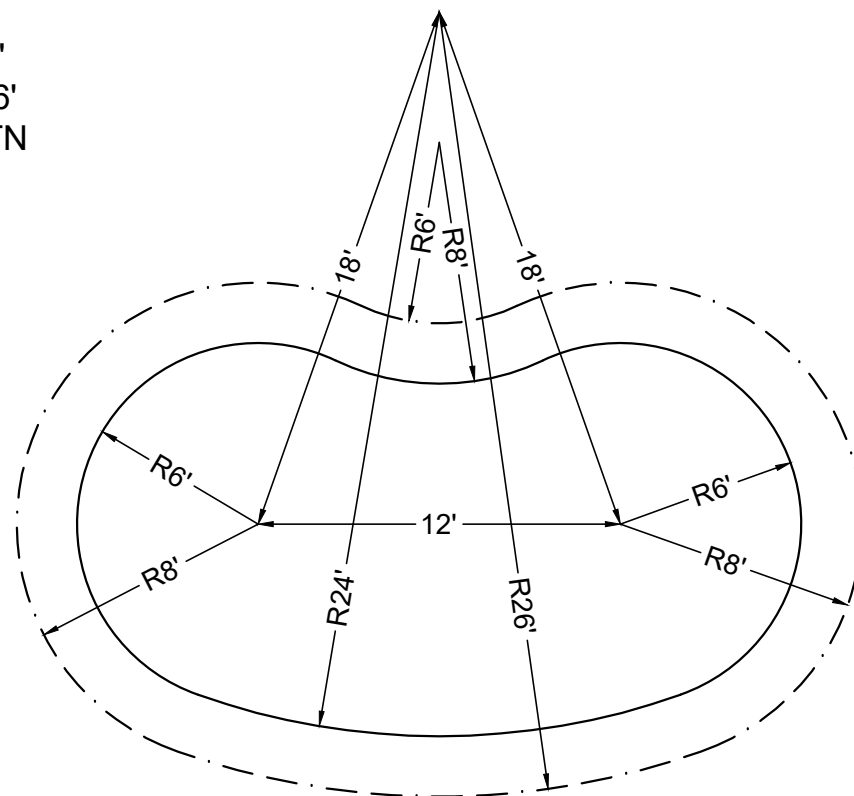
NON-DIVING POOL
USE OF DIVING EQUIPMENT IS PROHIBITED

MEETS DEPTH AND SHAPE MINIMUM STANDARD ANSI/NSPI5-2003



STEEL CHECK

STAKE OUT



SHAPE : KIDNEY

SIZE : 12' X 24'

HAND : RIGHT

PANEL HEIGHT : 3'-6"

DRAWN BY : NM-BCC

DWG # : MN1224KD-19

DATE : 1/11/2017

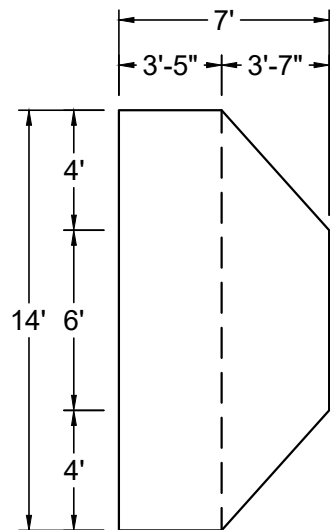
REVISION # : 01

KIT REF : MN1224KD-19-R

B



ALL DIMENSIONS ARE FINISHED

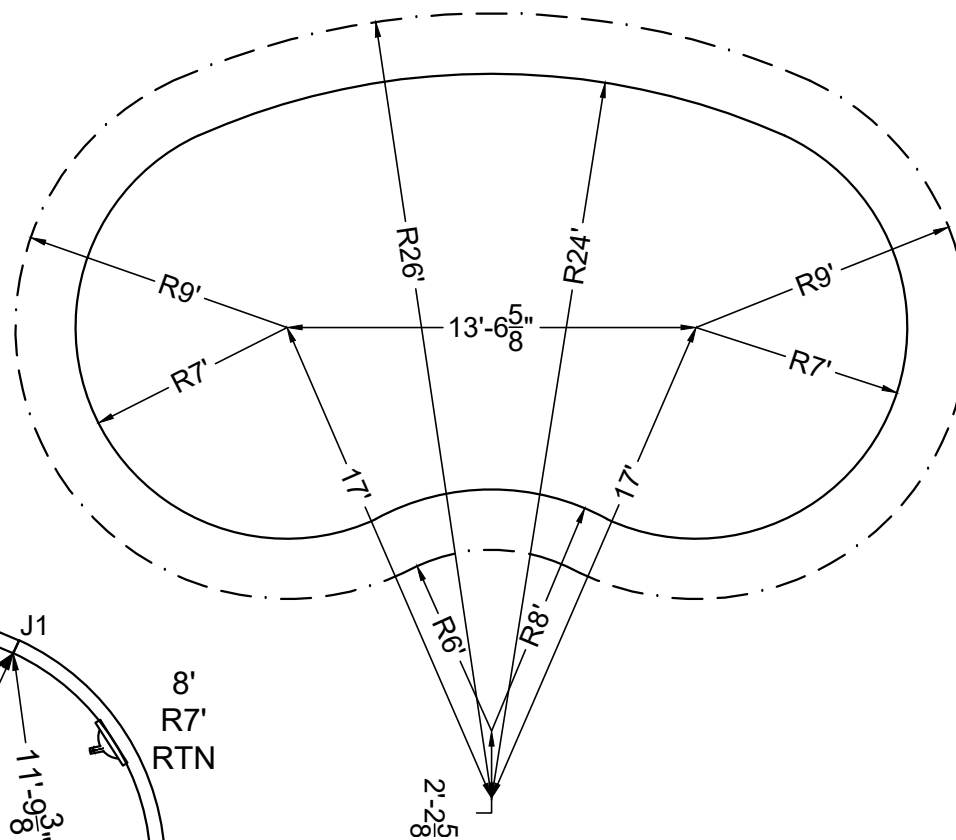
A



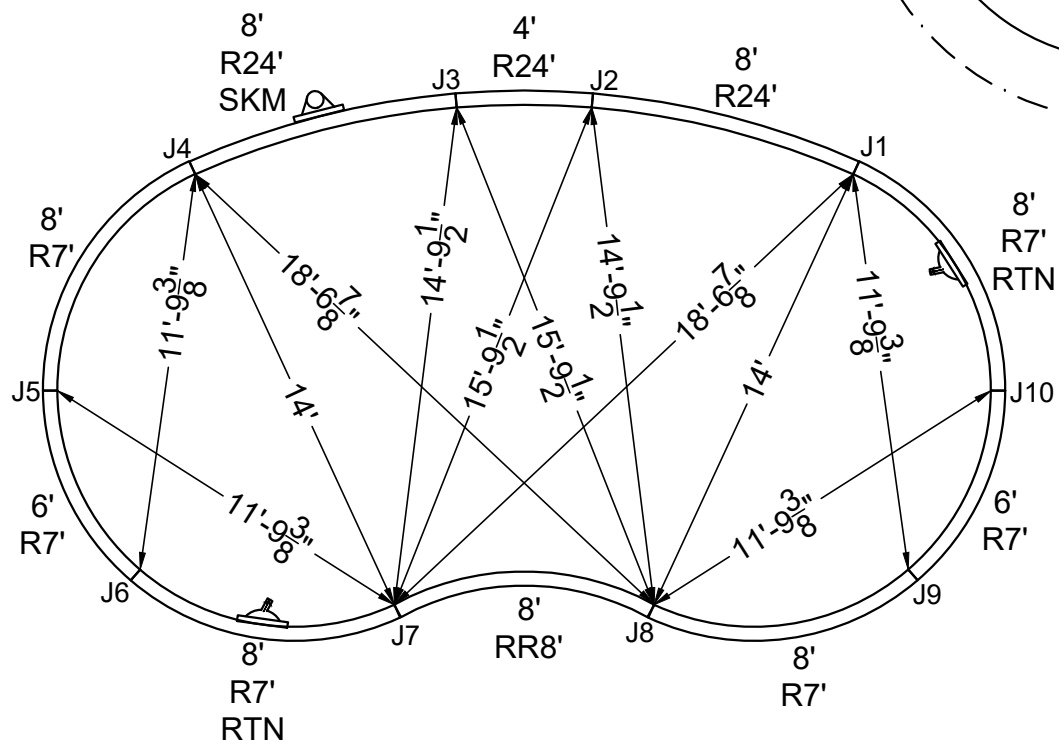
MEETS DEPTH AND SHAPE MINIMUM STANDARD ANSI/NSPI5-2003

ALL DIMENSIONS ARE FINISHED

STEEL CHECK



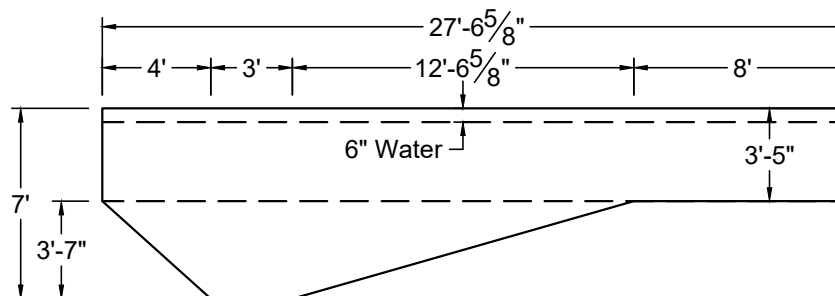
STAKE OUT



SHAPE : KIDNEY	SIZE : 14' X 27'-7"	HAND : LEFT	PANEL HEIGHT : 3'-6"	DRAWN BY : NM-BCC
DWG # : MN1428KD-19	DATE : 1/11/2017	REVISION # : 01	KIT REF : MN1428KD-19-L	B



ALL DIMENSIONS ARE FINISHED

A

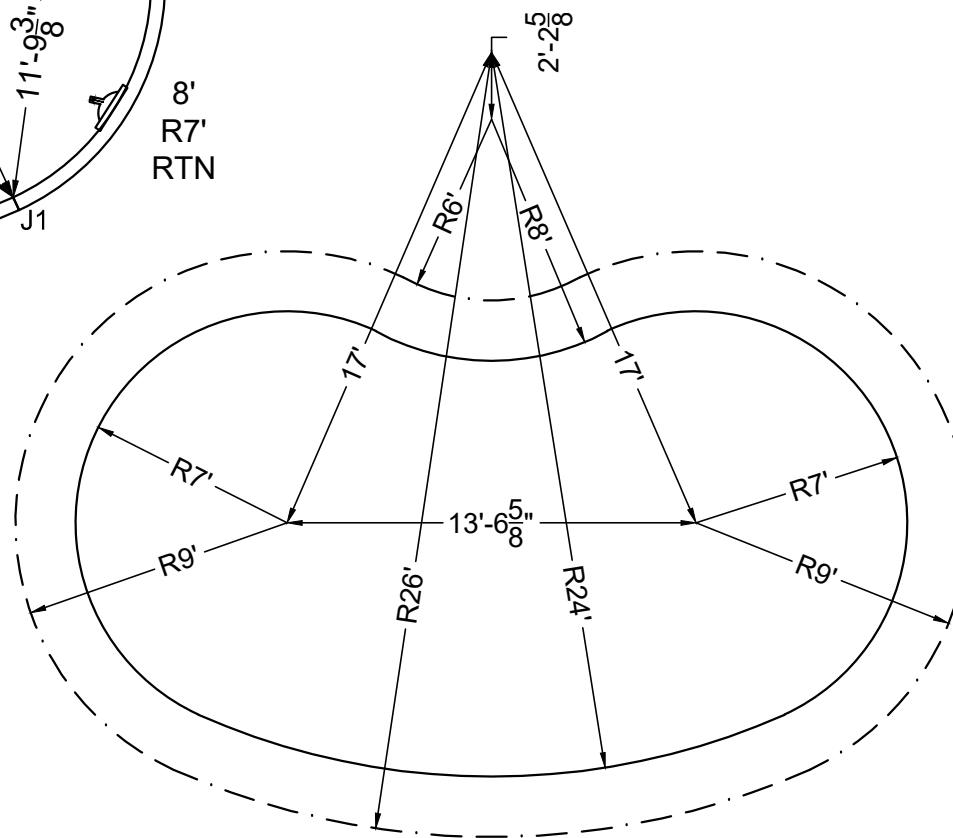


USE OF DIVING EQUIPMENT IS PROHIBITED

MEETS DEPTH AND SHAPE MINIMUM STANDARD ANSI/NSPI5-2003

ALL DIMENSIONS ARE FINISHED

STAKE OUT



SHAPE : KIDNEY	SIZE : 14' X 27'-7"	HAND : RIGHT	PANEL HEIGHT : 3'-6"	DRAWN BY : NM-BCC
DWG # : MN1428KD-19	DATE : 1/11/2017	REVISION # : 01	KIT REF : MN1428KD-19-R	B

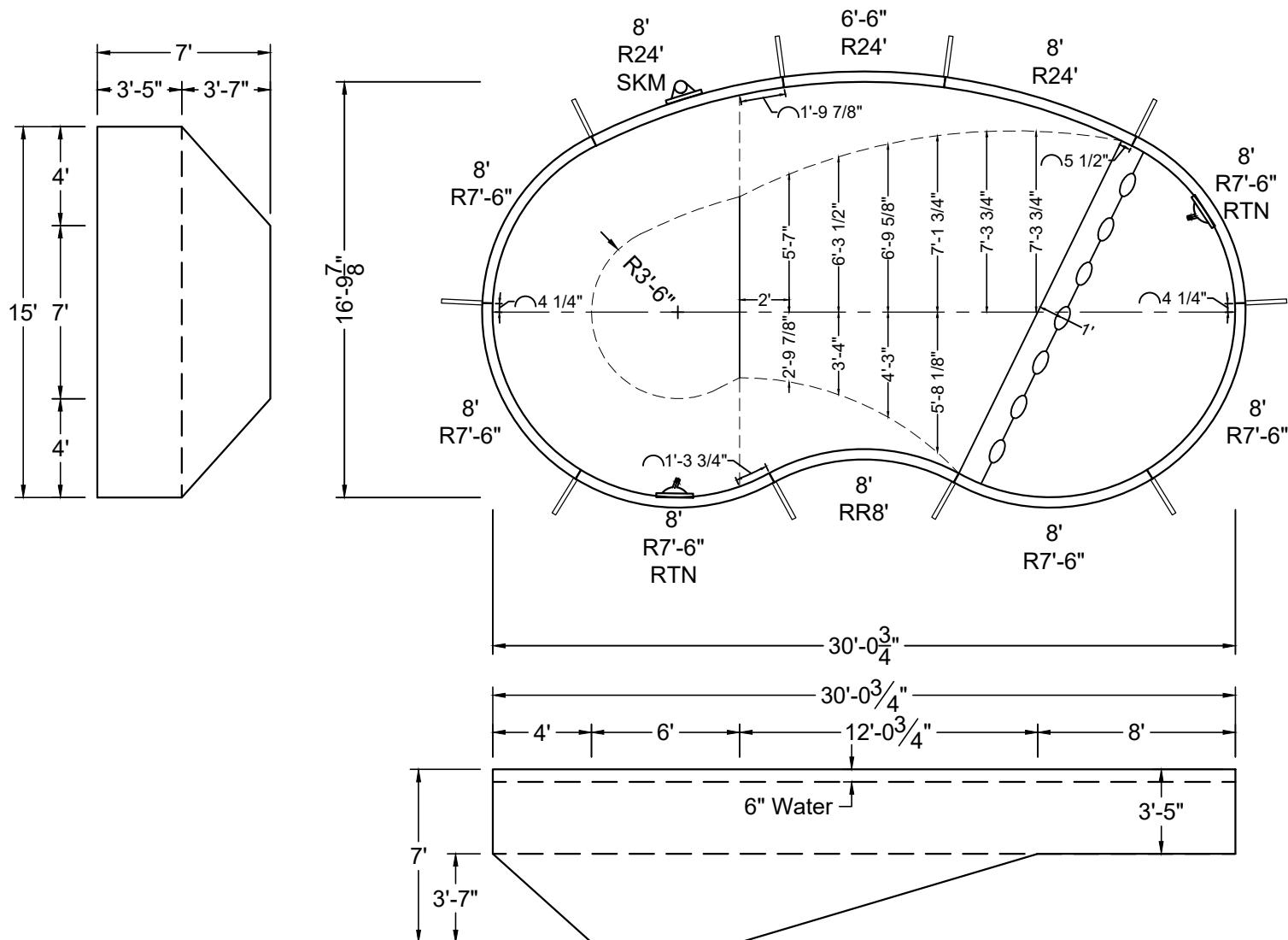
2



NON-DIVING POOL
USE OF DIVING EQUIPMENT IS PROHIBITED

MEETS DEPTH AND SHAPE MINIMUM STANDARD ANSI/NSPI5-2003

ALL DIMENSIONS ARE FINISHED



SHAPE : KIDNEY	SIZE : 15' X 30'-1"	HAND : LEFT	PANEL HEIGHT : 3'-6"	PANEL TYPE : 5" TOP
PERIMETER : 78'-6"	VOLUME : 14,735 US GAL.	SURFACE AREA : 410.623 SQ. FT.	SCALE : N.T.S	DRAWN BY : NM-BCC
DWG # : MN1530KD-19	DATE : 1/11/2017	REVISION # : 01	KIT REF : MN1530KD-19-L	A



ALL DIMENSIONS ARE FINISHED

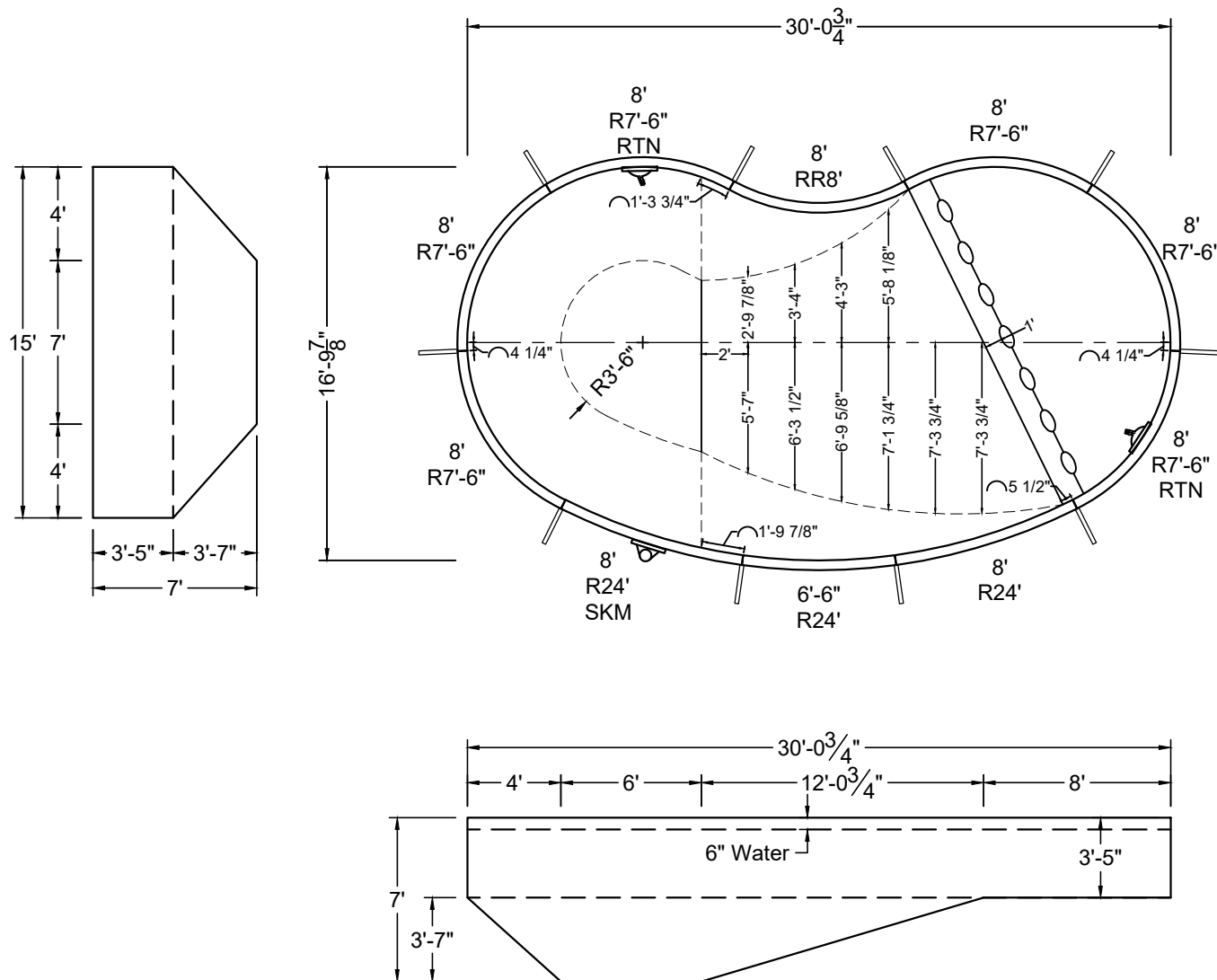
B

ALL DIMENSIONS ARE FINISHED



NON-DIVING POOL
USE OF DIVING EQUIPMENT IS PROHIBITED

MEETS DEPTH AND SHAPE MINIMUM STANDARD ANSI/NSPI5-2003



SHAPE : KIDNEY

SIZE : 15' X 30'-1"

HAND : RIGHT

PANEL HEIGHT : 3'-6"

PANEL TYPE : 5" TOP

PERIMETER : 78'-6"

VOLUME : 14,735 US GAL.

SURFACE AREA : 410.623 SQ. FT.

SCALE : N.T.S

DRAWN BY : NM-BCC

DWG # : MN1530KD-19

DATE : 1/11/2017

REVISION # : 01

KIT REF : MN1530KD-19-R

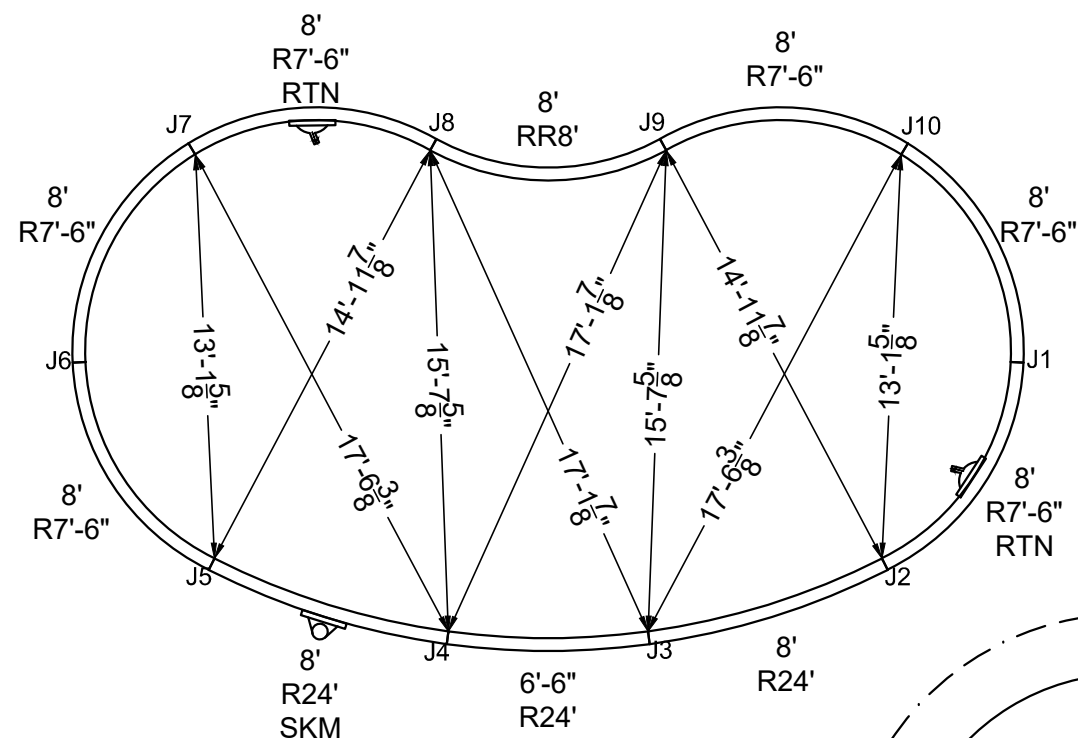
A



NON-DIVING POOL
USE OF DIVING EQUIPMENT IS PROHIBITED

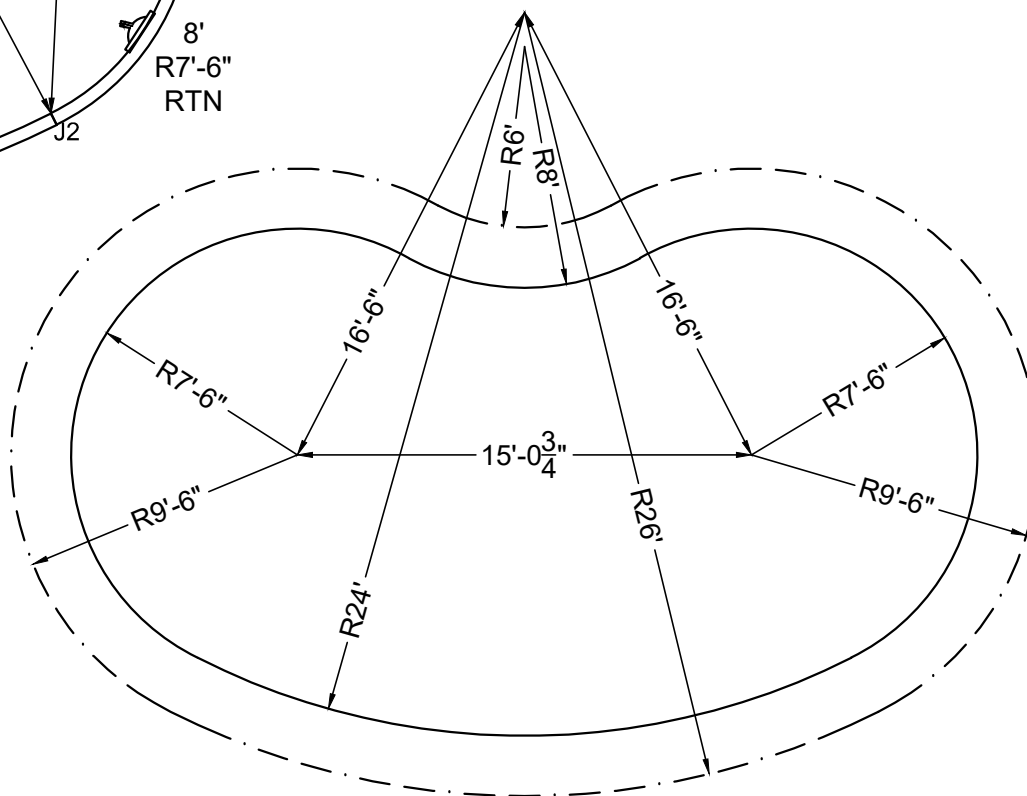
MEETS DEPTH AND SHAPE MINIMUM STANDARD ANSI/NSPI5-2003

ALL DIMENSIONS ARE FINISHED



STAKE OUT

STEEL CHECK



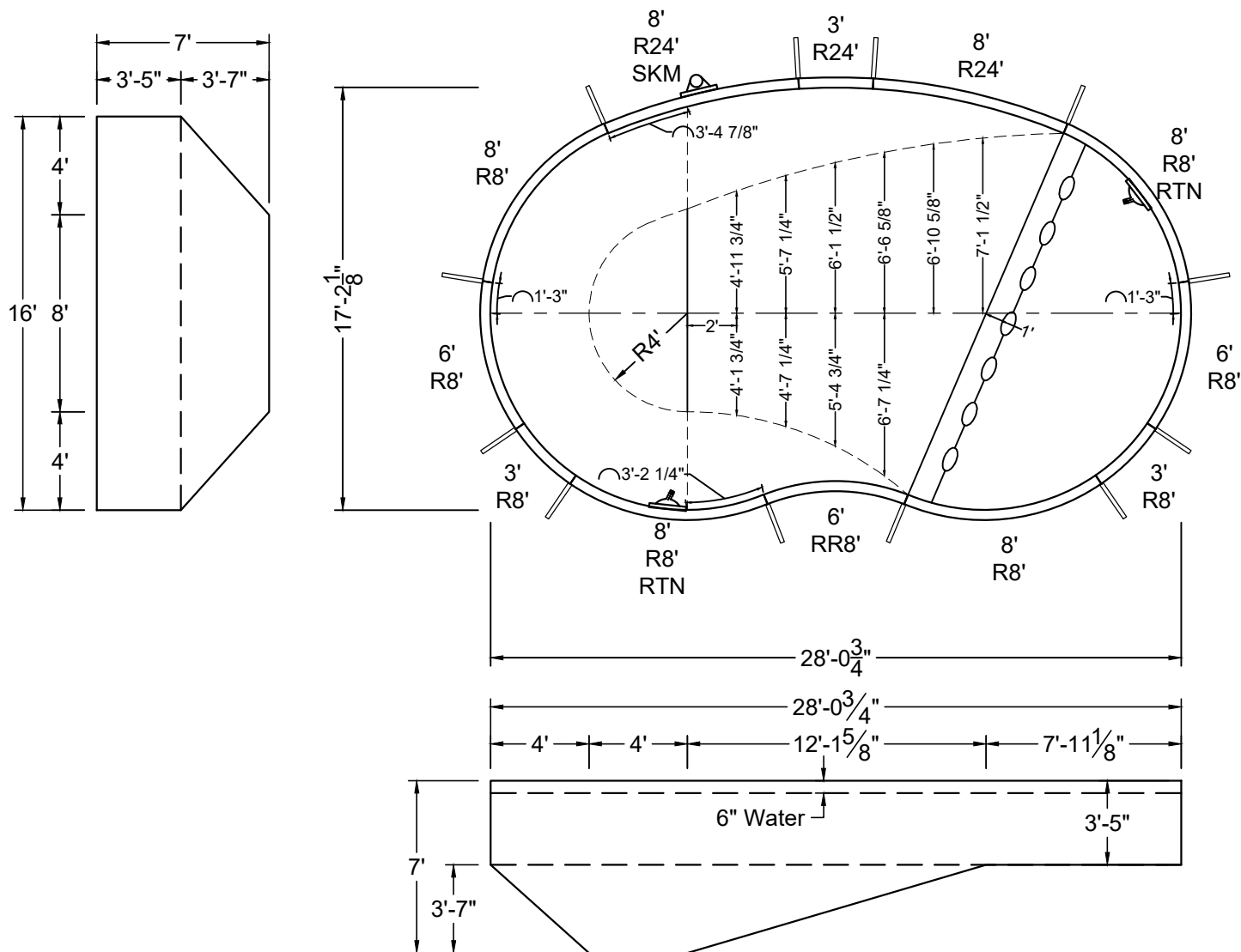
SHAPE : KIDNEY	SIZE : 15' X 30'-1"	HAND : RIGHT	PANEL HEIGHT : 3'-6"	DRAWN BY : NM-BCC
DWG # : MN1530KD-19	DATE : 1/11/2017	REVISION # : 01	KIT REF : MN1530KD-19-R	B

ALL DIMENSIONS ARE FINISHED



NON-DIVING POOL
USE OF DIVING EQUIPMENT IS PROHIBITED

MEETS DEPTH AND SHAPE MINIMUM STANDARD ANSI/NSPI5-2003



SHAPE : KIDNEY

SIZE : 16' X 28'-1"

HAND : LEFT

PANEL HEIGHT : 3'-6"

PANEL TYPE : 5" TOP

PERIMETER : 75'

VOLUME : 14,211 US GAL.

SURFACE AREA : 398.897 SQ. FT.

SCALE : N.T.S

DRAWN BY : NM-BCC

DWG # : MN1628KD-19

DATE : 1/12/2017

REVISION # : 01

KIT REF : MN1628KD-19-L

A

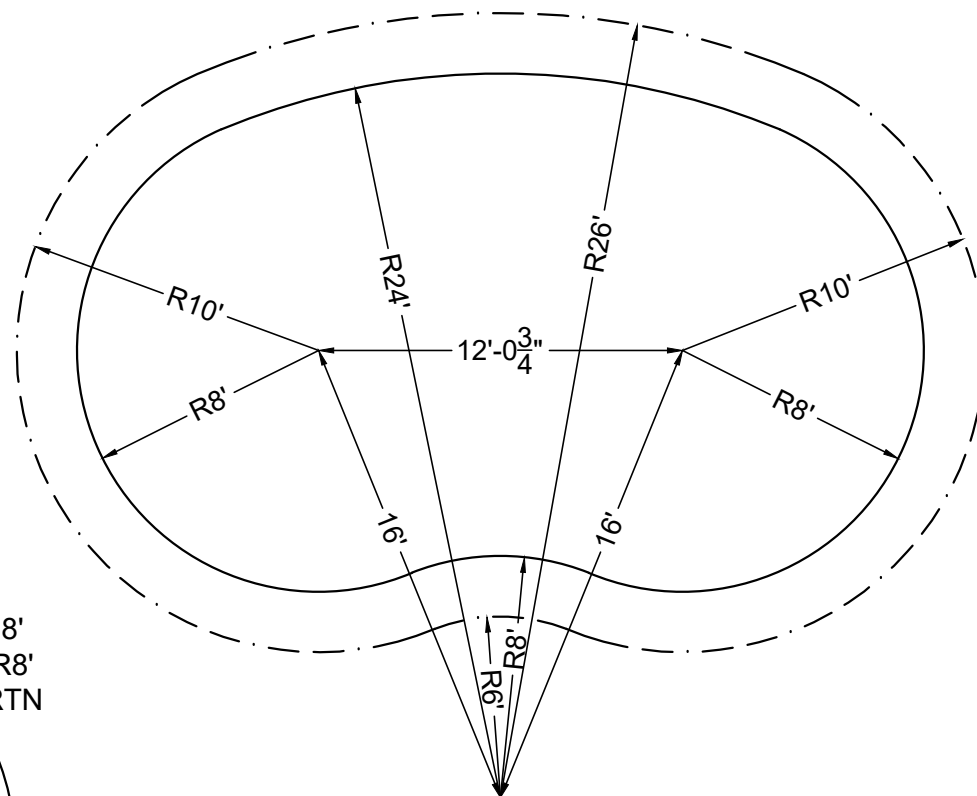
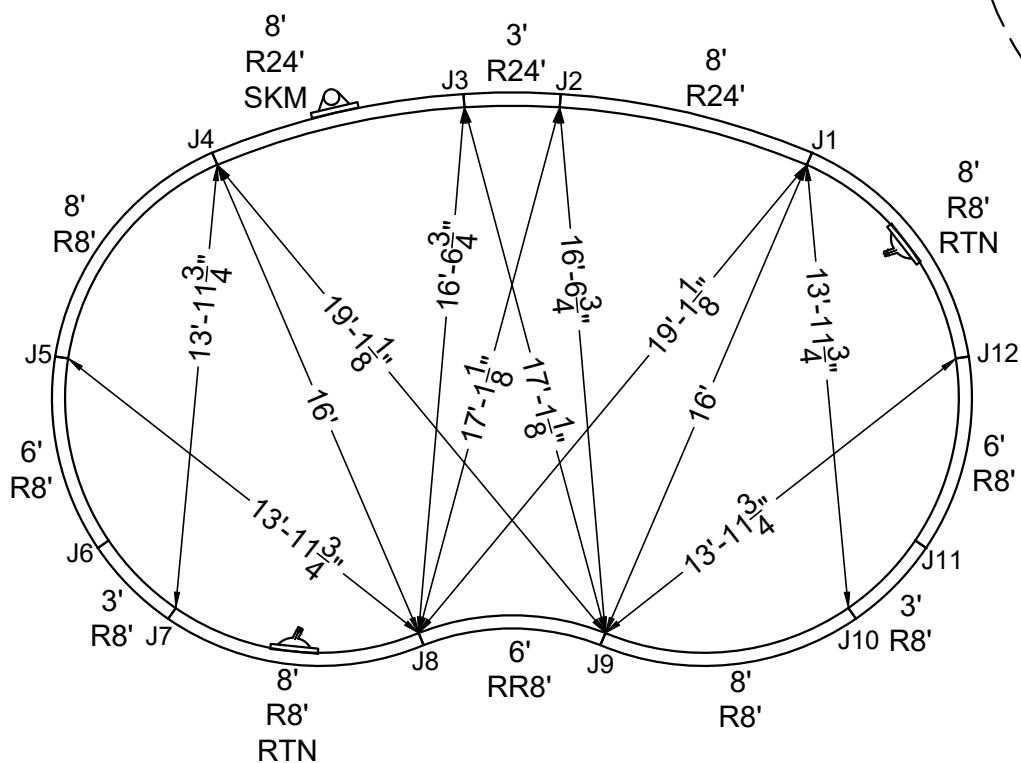
ALL DIMENSIONS ARE FINISHED



NON-DIVING POOL
USE OF DIVING EQUIPMENT IS PROHIBITED

MEETS DEPTH AND SHAPE MINIMUM STANDARD ANSI/NSPI5-2003

STEEL CHECK



STAKE OUT

SHAPE: KIDNEY

SIZE: 16' X 28'-1"

HAND: LEFT

PANEL HEIGHT: 3'-6"

DRAWN BY: NM-BCC

DWG #: MN1628KD-19

DATE: 1/12/2017

REVISION #: 01

KIT REF: MN1628KD-19-L

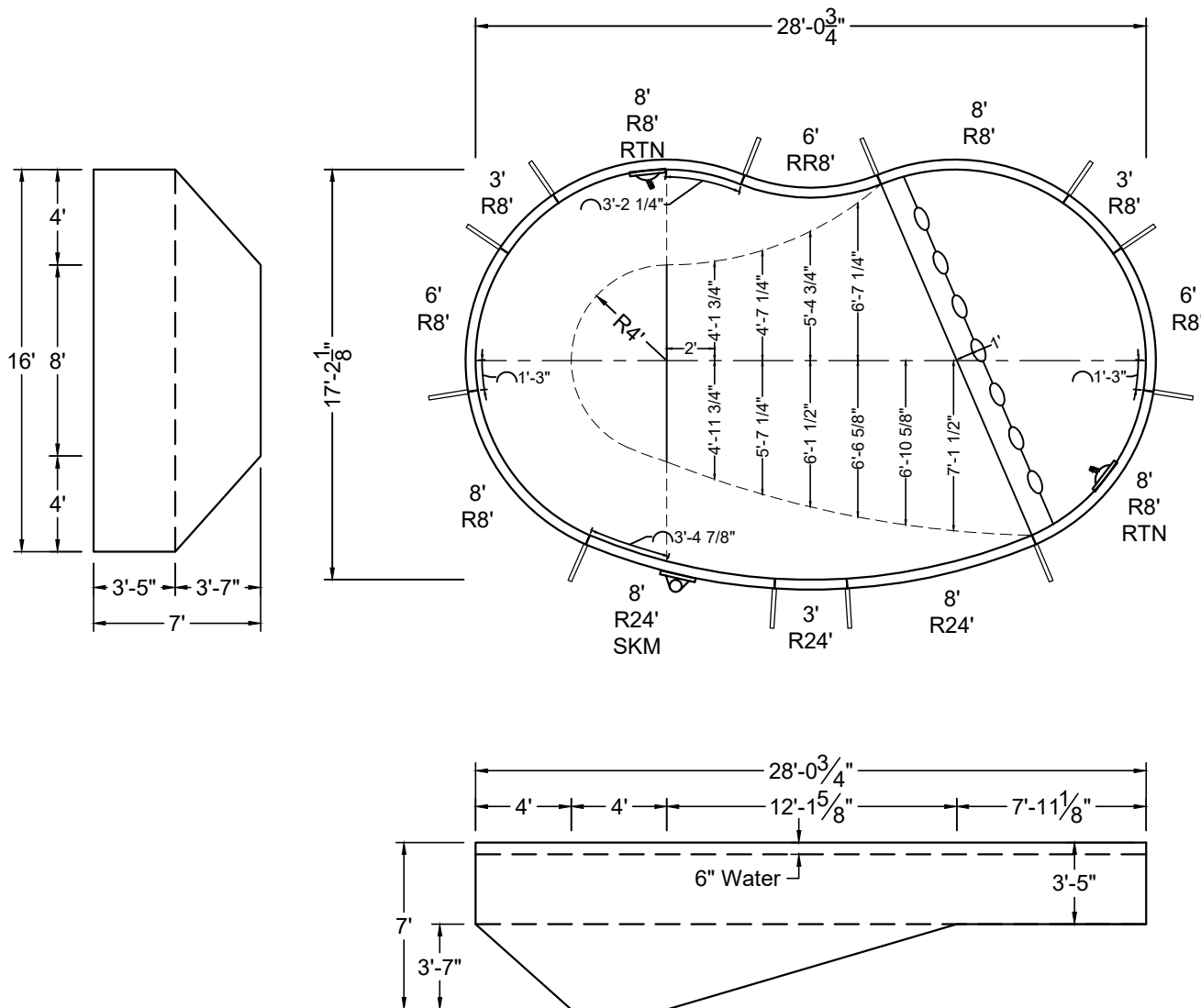
B

ALL DIMENSIONS ARE FINISHED



NON-DIVING POOL
USE OF DIVING EQUIPMENT IS PROHIBITED

MEETS DEPTH AND SHAPE MINIMUM STANDARD ANSI/NSPI5-2003



SHAPE : KIDNEY

SIZE : 16' X 28'-1"

HAND : RIGHT

PANEL HEIGHT : 3'-6"

PANEL TYPE : 5" TOP

PERIMETER : 75'

VOLUME : 14,211 US GAL.

SURFACE AREA : 398.897 SQ. FT.

SCALE : N.T.S

DRAWN BY : NM-BCC

DWG # : MN1628KD-19

DATE : 1/12/2017

REVISION # : 01

KIT REF : MN1628KD-19-R

A



MEGNA
POOLS

Megna Plastic Packaging Corp.

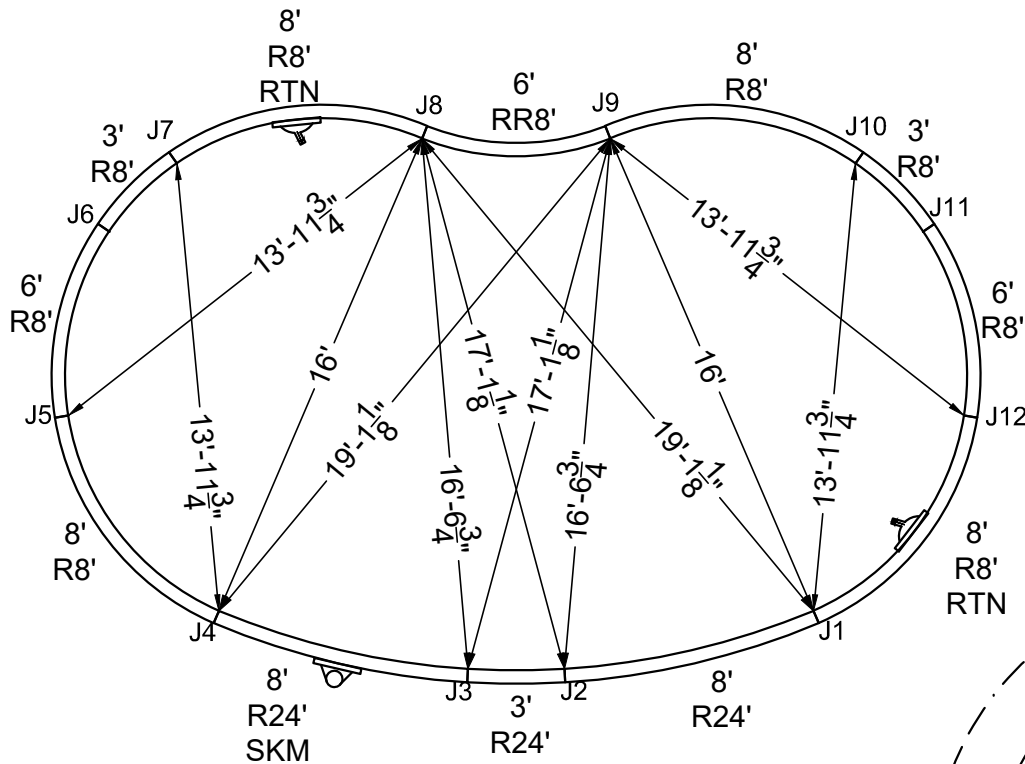


NON-DIVING POOL

USE OF DIVING EQUIPMENT IS PROHIBITED

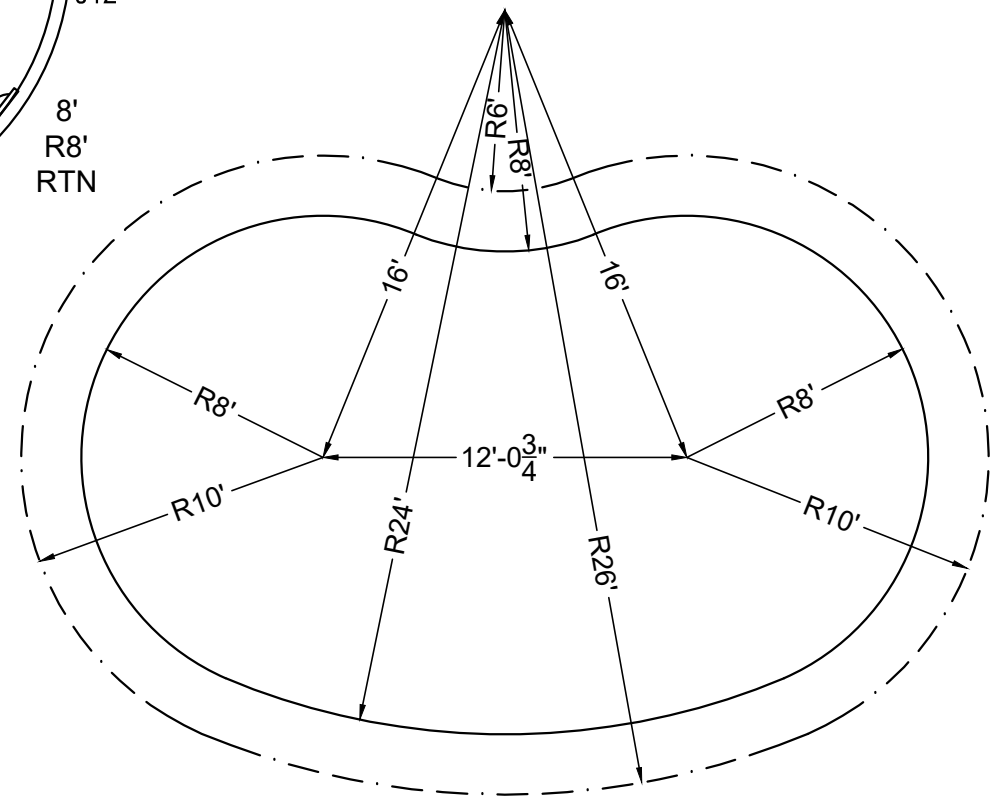
MEETS DEPTH AND SHAPE MINIMUM STANDARD ANSI/NSPI5-2003

ALL DIMENSIONS ARE FINISHED



STEEL CHECK

STAKE OUT



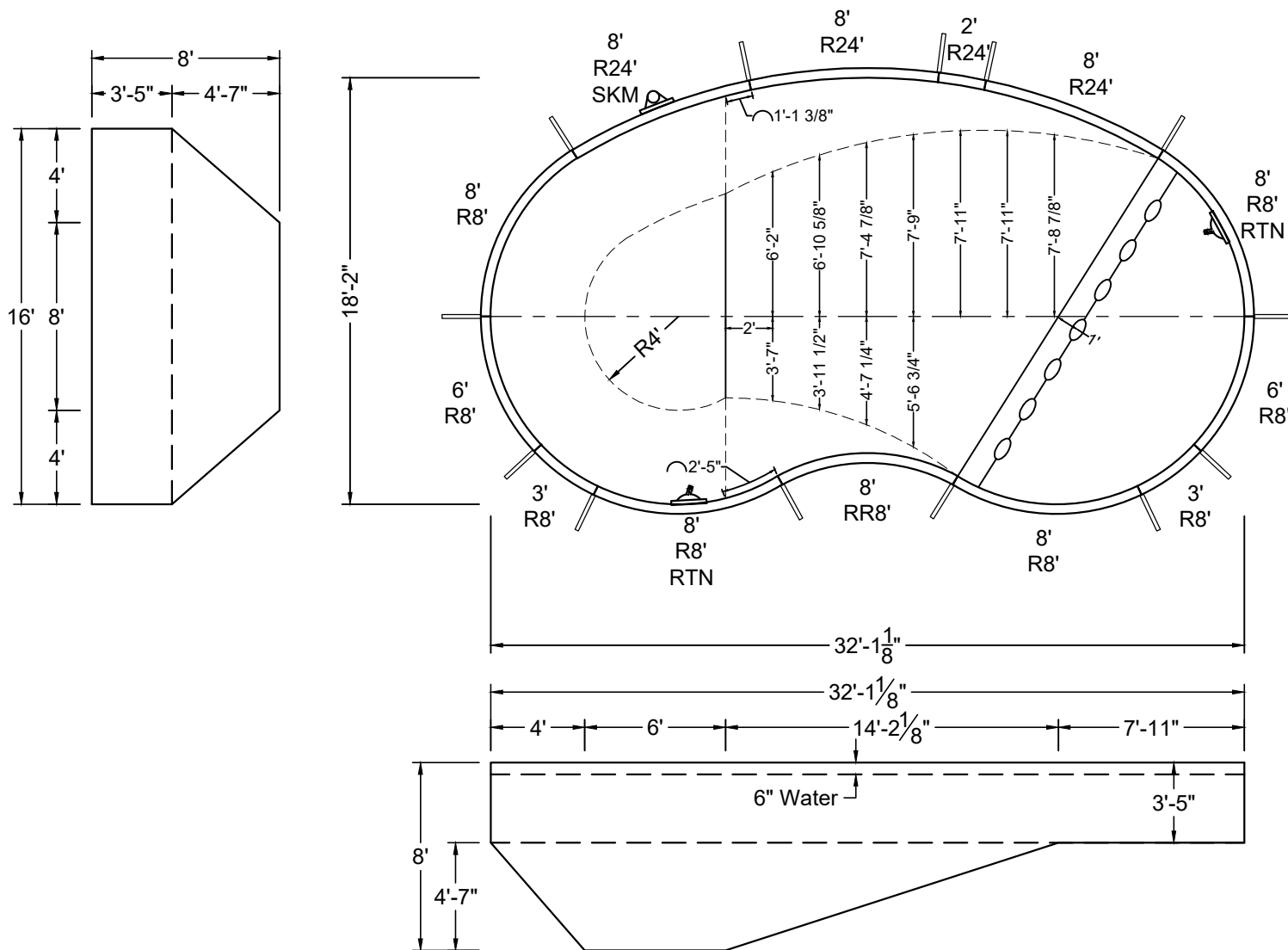
SHAPE : KIDNEY	SIZE : 16' X 28'-1"	HAND : RIGHT	PANEL HEIGHT : 3'-6"	DRAWN BY : NM-BCC
DWG # : MN1628KD-19	DATE : 1/12/2017	REVISION # : 01	KIT REF : MN1628KD-19-R	B

ALL DIMENSIONS ARE FINISHED

DIVING / SLIDE EQUIPMENT DISCLAIMER:

THE BOTTOM CONFIGURATION SHOWN MEETS WITH THE CURRENT ISPSC MINIMUM STANDARDS FOR POOLS APPROVED FOR THE USE WITH MANUFACTURED DIVING EQUIPMENT. ALL DIVING EQUIPMENT MUST BE INSTALLED AND LOCATED IN ACCORDANCE WITH THE DIVING / SLIDE MANUFACTURER'S RECOMMENDATIONS. IF DIVING EQUIPMENT IS INSTALLED: PLEASE FOLLOW ALL THE DIVING / SLIDE EQUIPMENT MANUFACTURER'S INSTALLATION, USE AND SAFETY INSTRUCTIONS.

MEETS DEPTH AND SHAPE MINIMUM STANDARD ANSI/NSPI5-2003



SHAPE: KIDNEY	SIZE: 16' X 32'-1"	HAND: LEFT	PANEL HEIGHT: 3'-6"	PANEL TYPE: 5" TOP
PERIMETER: 84'	VOLUME: 18,359 US GAL.	SURFACE AREA: 470.730 SQ. FT.	SCALE: N.T.S	DRAWN BY: NM-BCC
DWG #: MN1632KD-19	DATE: 1/12/2017	REVISION #: 01	KIT REF: MN1632KD-19-L	A



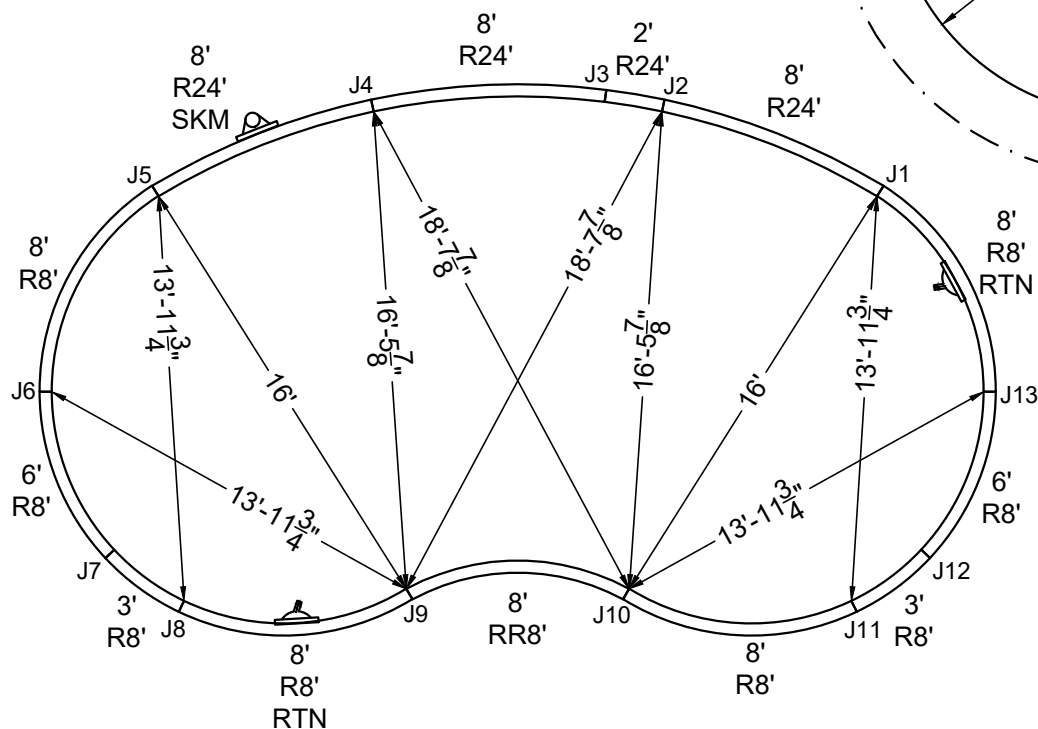
ALL DIMENSIONS ARE FINISHED

DIVING / SLIDE EQUIPMENT DISCLAIMER:

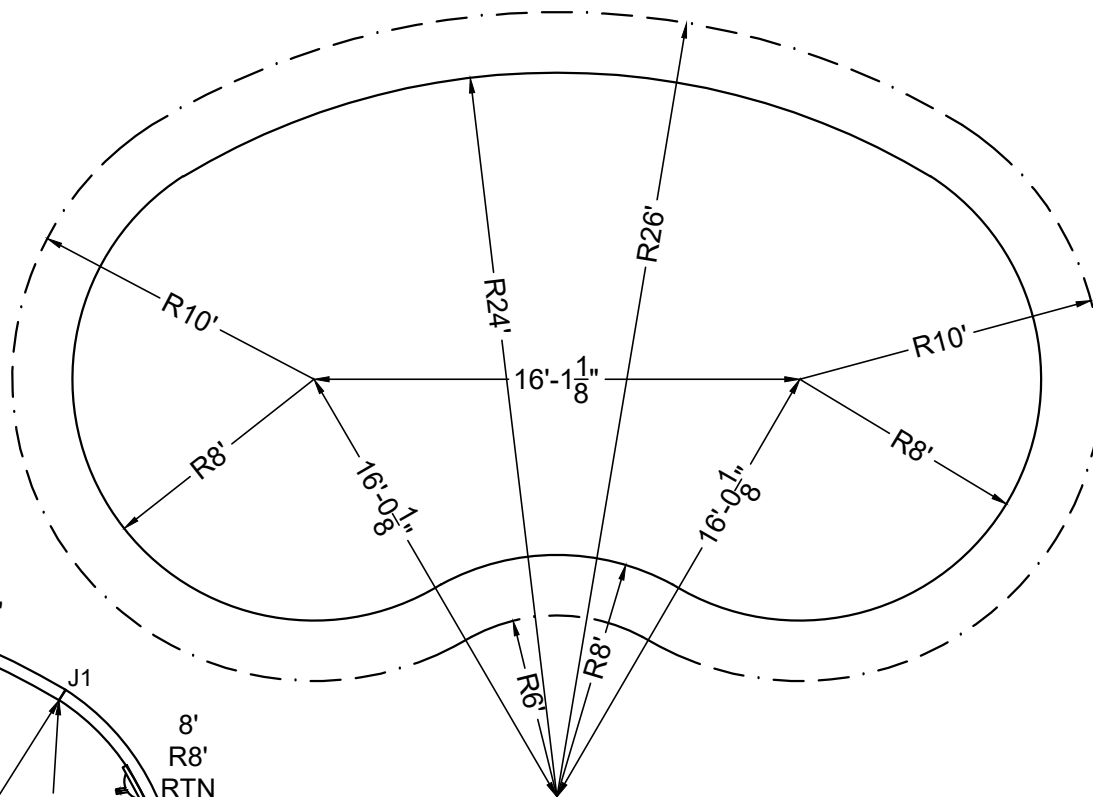
THE BOTTOM CONFIGURATION SHOWN MEETS WITH THE CURRENT IPSC MINIMUM STANDARDS FOR POOLS APPROVED FOR THE USE WITH MANUFACTURED DIVING EQUIPMENT. ALL DIVING EQUIPMENT MUST BE INSTALLED AND LOCATED IN ACCORDANCE WITH THE DIVING / SLIDE MANUFACTURER'S RECOMMENDATIONS. IF DIVING EQUIPMENT IS INSTALLED: PLEASE FOLLOW ALL THE DIVING / SLIDE EQUIPMENT MANUFACTURER'S INSTALLATION, USE AND SAFETY INSTRUCTIONS.

MEETS DEPTH AND SHAPE MINIMUM STANDARD ANSI/NSPI5-2003

STEEL CHECK



STAKE OUT



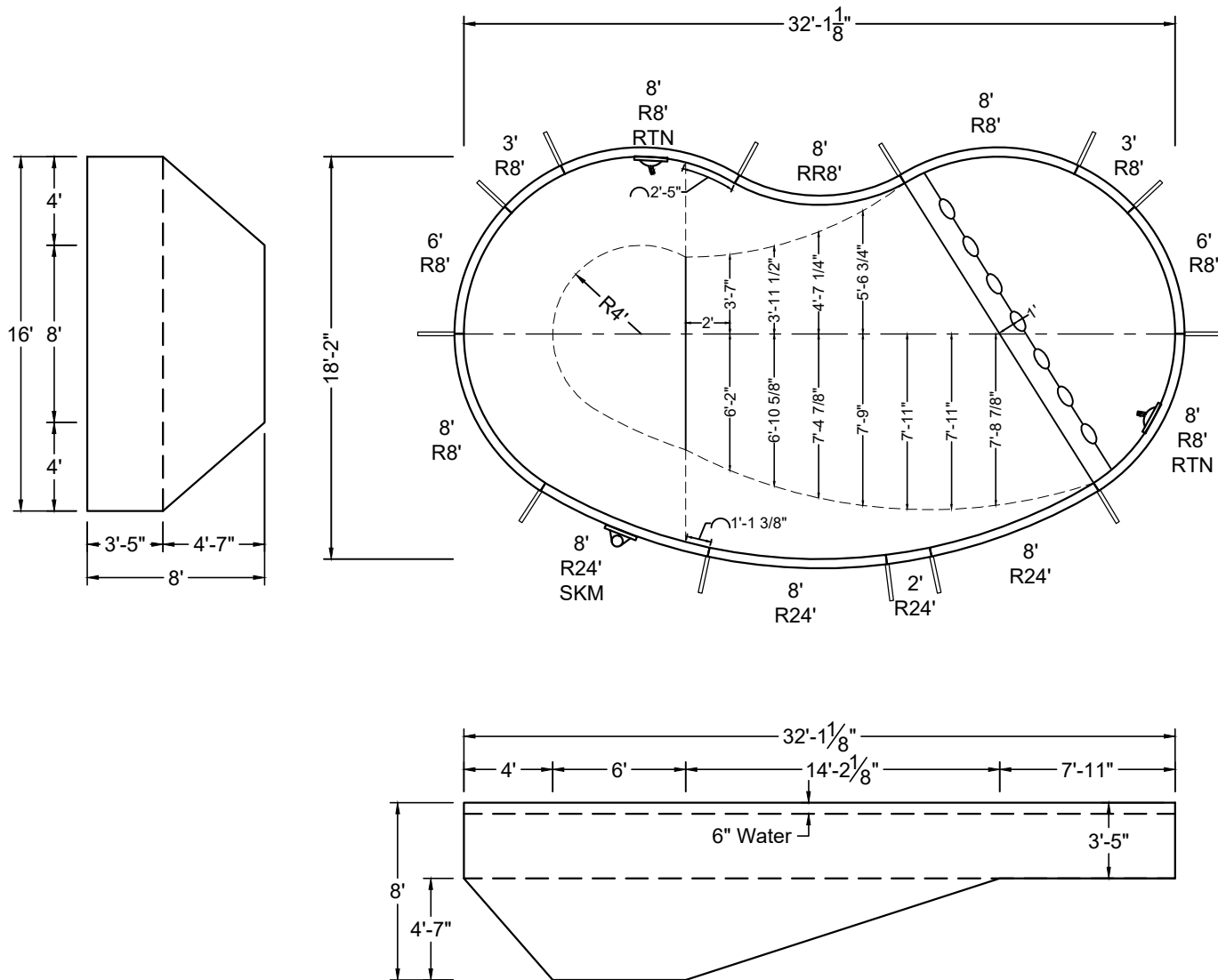
SHAPE : KIDNEY	SIZE : 16' X 32'-1"	HAND : LEFT	PANEL HEIGHT : 3'-6"	DRAWN BY : NM-BCC
DWG # : MN1632KD-19	DATE : 1/12/2017	REVISION # : 01	KIT REF : MN1632KD-19-L	B

ALL DIMENSIONS ARE FINISHED

DIVING / SLIDE EQUIPMENT DISCLAIMER:

THE BOTTOM CONFIGURATION SHOWN MEETS WITH THE CURRENT ISPSC MINIMUM STANDARDS FOR POOLS APPROVED FOR THE USE WITH MANUFACTURED DIVING EQUIPMENT. ALL DIVING EQUIPMENT MUST BE INSTALLED AND LOCATED IN ACCORDANCE WITH THE DIVING / SLIDE MANUFACTURER'S RECOMMENDATIONS. IF DIVING EQUIPMENT IS INSTALLED: PLEASE FOLLOW ALL THE DIVING / SLIDE EQUIPMENT MANUFACTURER'S INSTALLATION, USE AND SAFETY INSTRUCTIONS.

MEETS DEPTH AND SHAPE MINIMUM STANDARD ANSI/NSPI5-2003



SHAPE : KIDNEY

SIZE : 16' X 32'-1"

HAND : RIGHT

PANEL HEIGHT : 3'-6"

PANEL TYPE : 5" TOP

PERIMETER : 84'

VOLUME : 18,359 US GAL.

SURFACE AREA : 470.730 SQ. FT.

SCALE : N.T.S

DRAWN BY : NM-BCC

DWG # : MN1632KD-19

DATE : 1/12/2017

REVISION # : 01

KIT REF : MN1632KD-19-R

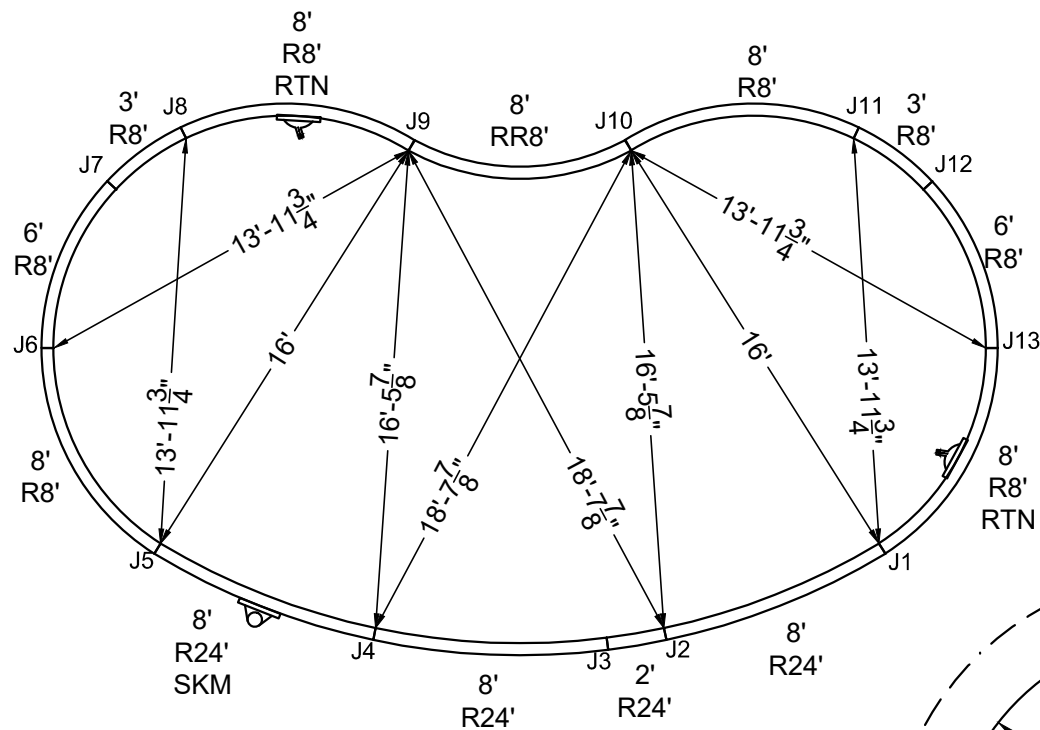
A

ALL DIMENSIONS ARE FINISHED

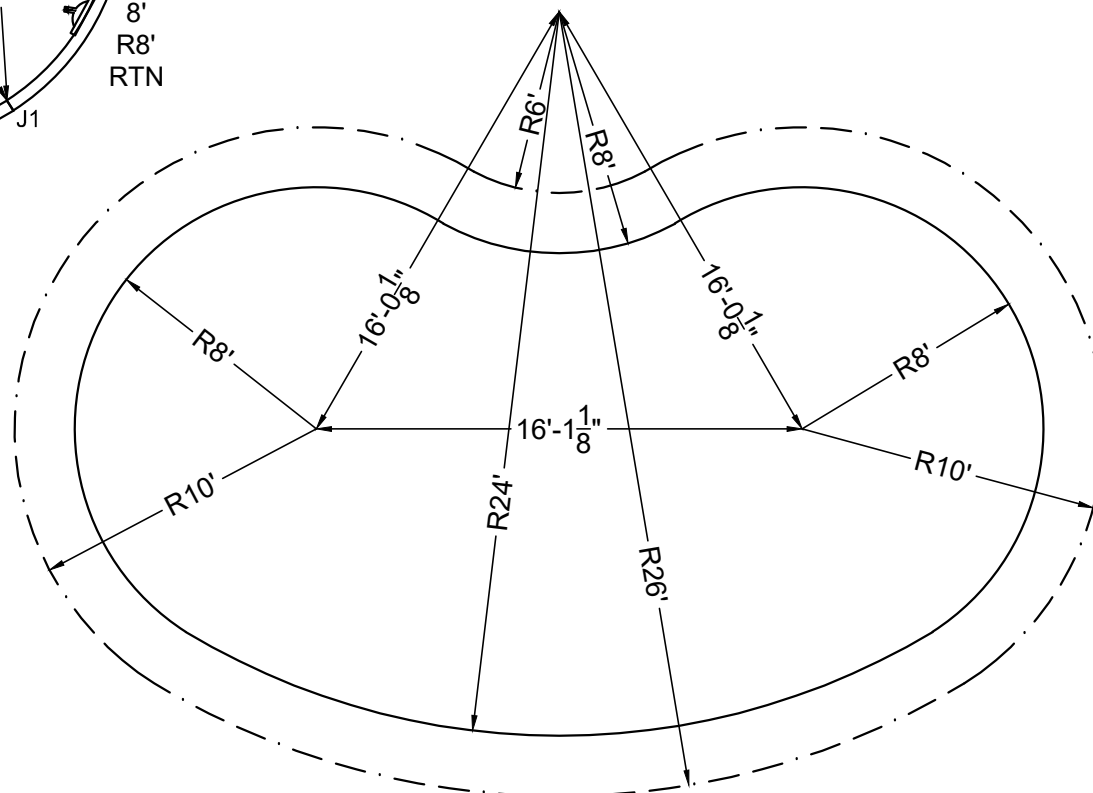
DIVING / SLIDE EQUIPMENT DISCLAIMER:

THE BOTTOM CONFIGURATION SHOWN MEETS WITH THE CURRENT ISPS MINIMUM STANDARDS FOR POOLS APPROVED FOR THE USE WITH MANUFACTURED DIVING EQUIPMENT. ALL DIVING EQUIPMENT MUST BE INSTALLED AND LOCATED IN ACCORDANCE WITH THE DIVING / SLIDE MANUFACTURER'S RECOMMENDATIONS. IF DIVING EQUIPMENT IS INSTALLED: PLEASE FOLLOW ALL THE DIVING / SLIDE EQUIPMENT MANUFACTURER'S INSTALLATION, USE AND SAFETY INSTRUCTIONS.

MEETS DEPTH AND SHAPE MINIMUM STANDARD ANSI/NSPI5-2003



STEEL CHECK



STAKE OUT

SHAPE: KIDNEY

SIZE: 16' X 32'-1"

HAND: RIGHT

PANEL HEIGHT: 3'-6"

DRAWN BY: NM-BCC

DWG #: MN1632KD-19

DATE: 1/12/2017

REVISION #: 01

KIT REF: MN1632KD-19-R

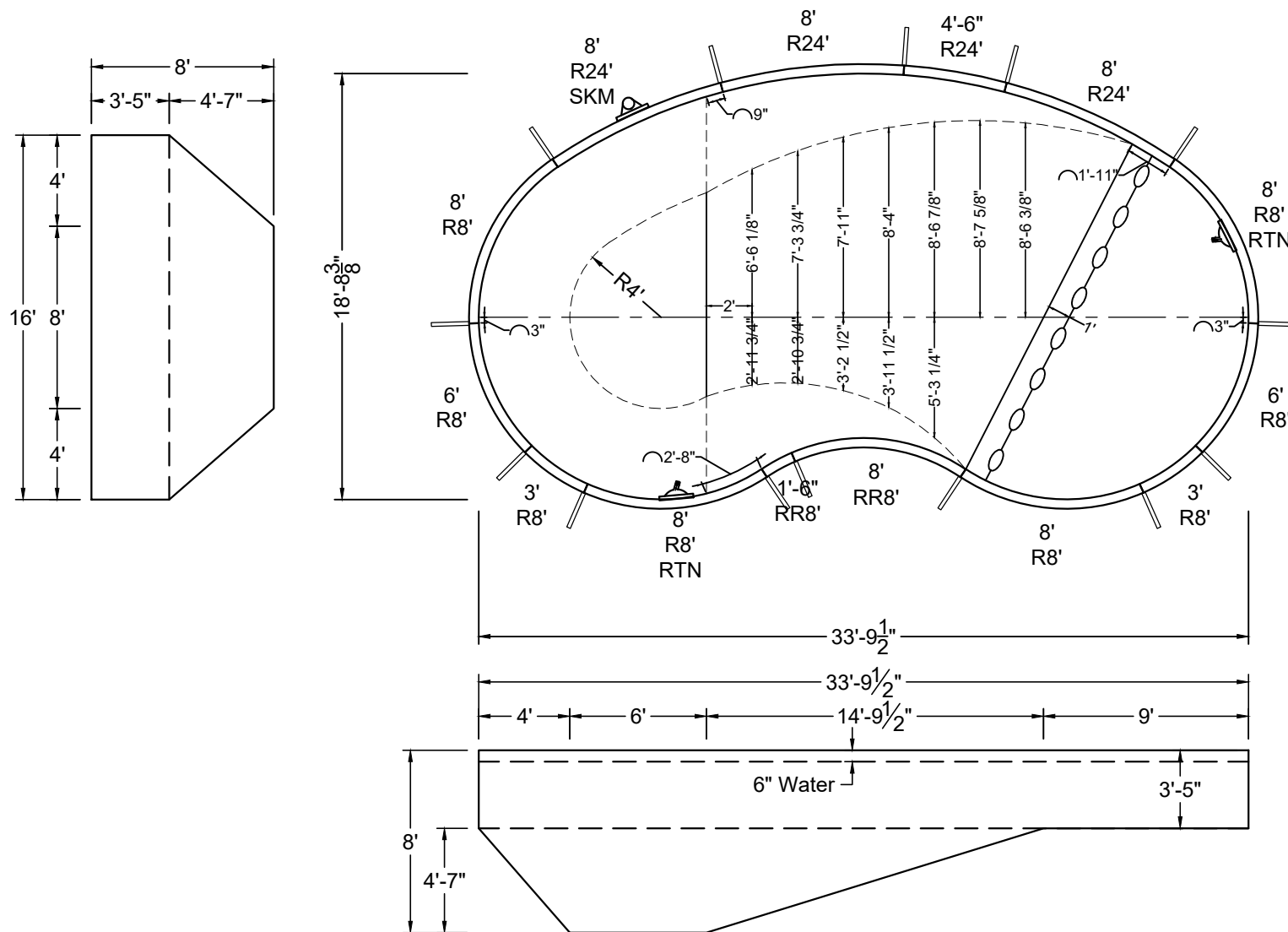
B

ALL DIMENSIONS ARE FINISHED

DIVING / SLIDE EQUIPMENT DISCLAIMER:

THE BOTTOM CONFIGURATION SHOWN MEETS WITH THE CURRENT ISPSC MINIMUM STANDARDS FOR POOLS APPROVED FOR THE USE WITH MANUFACTURED DIVING EQUIPMENT. ALL DIVING EQUIPMENT MUST BE INSTALLED AND LOCATED IN ACCORDANCE WITH THE DIVING / SLIDE MANUFACTURER'S RECOMMENDATIONS. IF DIVING EQUIPMENT IS INSTALLED: PLEASE FOLLOW ALL THE DIVING / SLIDE EQUIPMENT MANUFACTURER'S INSTALLATION, USE AND SAFETY INSTRUCTIONS.

MEETS DEPTH AND SHAPE MINIMUM STANDARD ANSI/NSPI5-2003



SHAPE : KIDNEY	SIZE : 16' X 33'-10"	HAND : LEFT	PANEL HEIGHT : 3'-6"	PANEL TYPE : 5" TOP
PERIMETER : 88'	VOLUME : 19,246 US GAL.	SURFACE AREA : 502.926 SQ. FT.	SCALE : N.T.S	DRAWN BY : NM-BCC
DWG # : MN1634KD-19	DATE : 1/12/2017	REVISION # : 01	KIT REF : MN1634KD-19-L	A

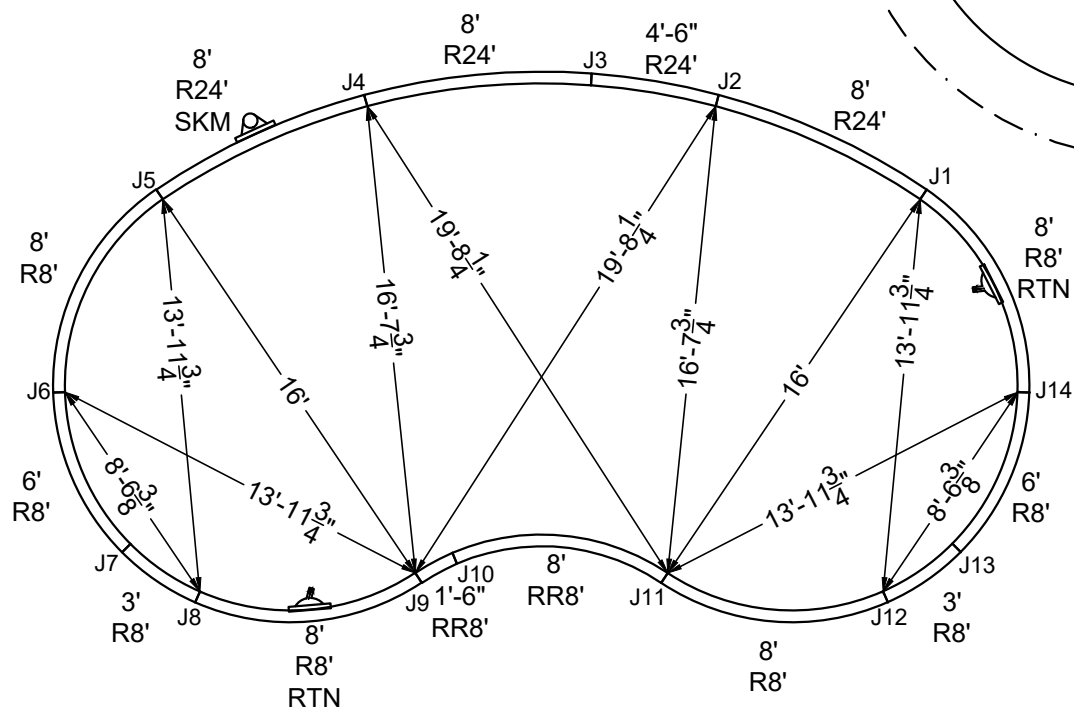
ALL DIMENSIONS ARE FINISHED

DIVING / SLIDE EQUIPMENT DISCLAIMER:

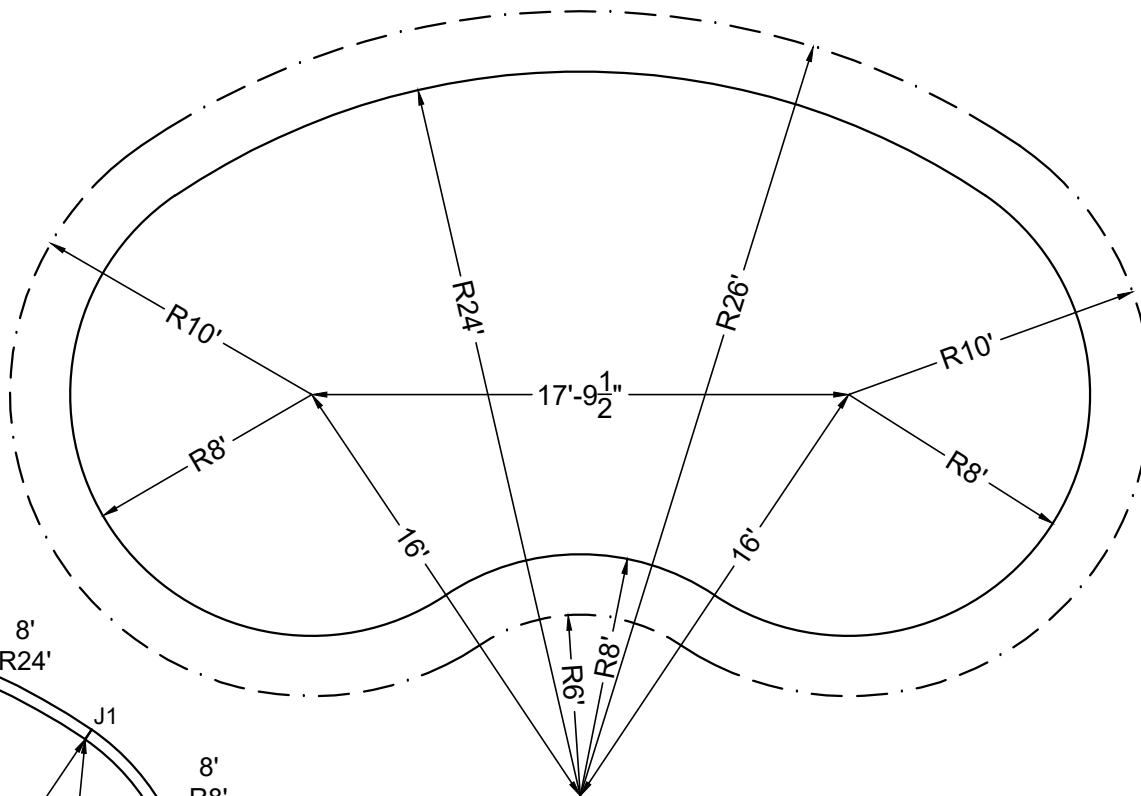
THE BOTTOM CONFIGURATION SHOWN MEETS WITH THE CURRENT ISPSC MINIMUM STANDARDS FOR POOLS APPROVED FOR THE USE WITH MANUFACTURED DIVING EQUIPMENT. ALL DIVING EQUIPMENT MUST BE INSTALLED AND LOCATED IN ACCORDANCE WITH THE DIVING / SLIDE MANUFACTURER'S RECOMMENDATIONS. IF DIVING EQUIPMENT IS INSTALLED: PLEASE FOLLOW ALL THE DIVING / SLIDE EQUIPMENT MANUFACTURER'S INSTALLATION, USE AND SAFETY INSTRUCTIONS.

MEETS DEPTH AND SHAPE MINIMUM STANDARD ANSI/NSPI5-2003

STEEL CHECK



STAKE OUT



SHAPE : KIDNEY

SIZE : 16' X 33'-10"

HAND : LEFT

PANEL HEIGHT : 3'-6"

DRAWN BY : NM-BCC

DWG # : MN1634KD-19

DATE : 1/12/2017

REVISION # : 01

KIT REF : MN1634KD-19-L

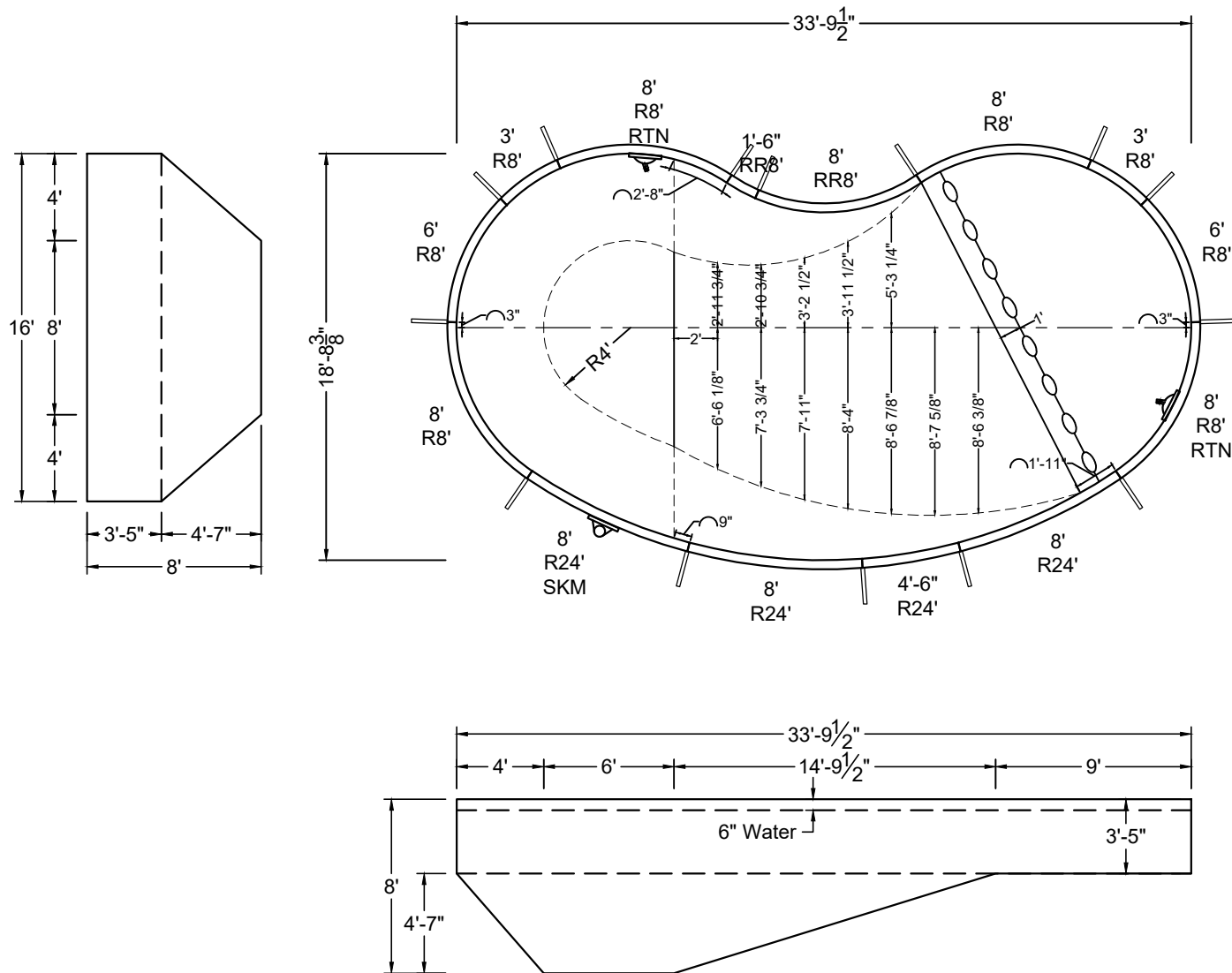
B

ALL DIMENSIONS ARE FINISHED

DIVING / SLIDE EQUIPMENT DISCLAIMER:

THE BOTTOM CONFIGURATION SHOWN MEETS WITH THE CURRENT ISPSC MINIMUM STANDARDS FOR POOLS APPROVED FOR THE USE WITH MANUFACTURED DIVING EQUIPMENT. ALL DIVING EQUIPMENT MUST BE INSTALLED AND LOCATED IN ACCORDANCE WITH THE DIVING / SLIDE MANUFACTURER'S RECOMMENDATIONS. IF DIVING EQUIPMENT IS INSTALLED: PLEASE FOLLOW ALL THE DIVING / SLIDE EQUIPMENT MANUFACTURER'S INSTALLATION, USE AND SAFETY INSTRUCTIONS.

MEETS DEPTH AND SHAPE MINIMUM STANDARD ANSI/NSPI5-2003



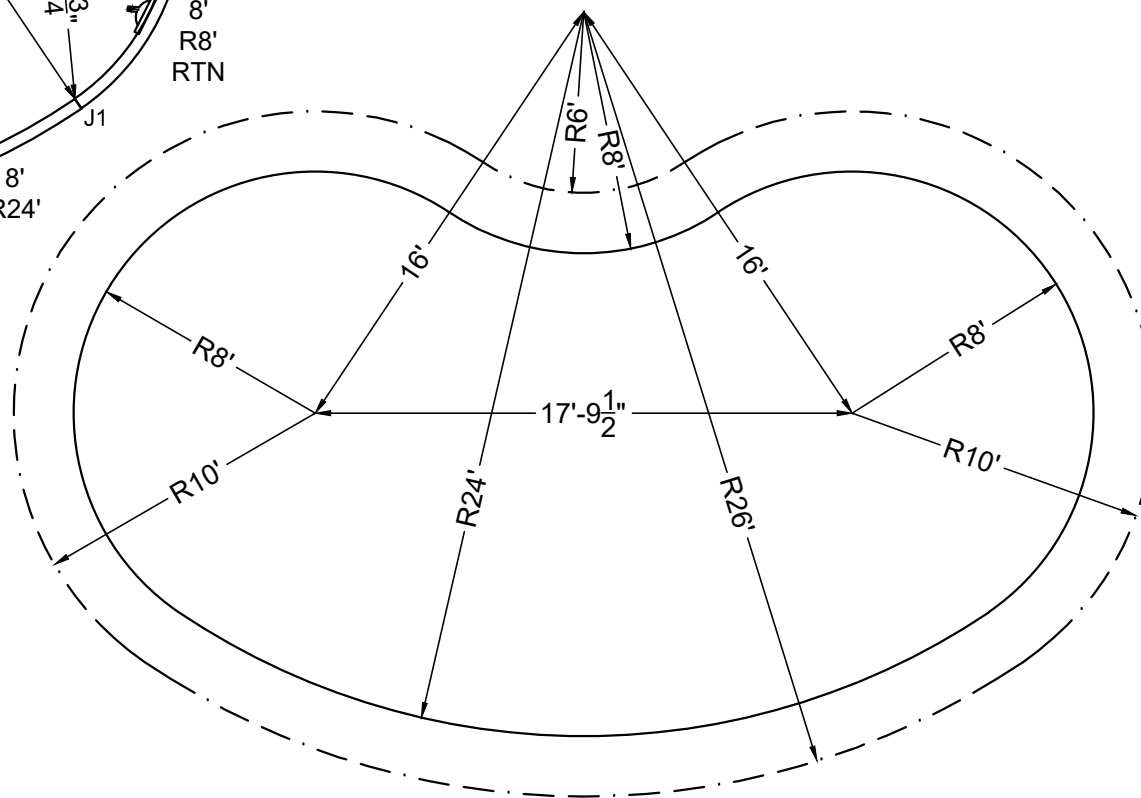
SHAPE: KIDNEY	SIZE: 16' X 33'-10"	HAND: RIGHT	PANEL HEIGHT: 3'-6"	PANEL TYPE: 5" TOP
PERIMETER: 88'	VOLUME: 19,246 US GAL.	SURFACE AREA: 502.926 SQ. FT.	SCALE: N.T.S	DRAWN BY: NM-BCC
DWG #: MN1634KD-19	DATE: 1/12/2017	REVISION #: 01	KIT REF: MN1634KD-19-R	A



DIVING / SLIDE EQUIPMENT DISCLAIMER:

THE BOTTOM CONFIGURATION SHOWN MEETS WITH THE CURRENT IPSC MINIMUM STANDARDS FOR POOLS APPROVED FOR THE USE WITH MANUFACTURED DIVING EQUIPMENT. ALL DIVING EQUIPMENT MUST BE INSTALLED AND LOCATED IN ACCORDANCE WITH THE DIVING / SLIDE MANUFACTURER'S RECOMMENDATIONS. IF DIVING EQUIPMENT IS INSTALLED: PLEASE FOLLOW ALL THE DIVING / SLIDE EQUIPMENT MANUFACTURER'S INSTALLATION, USE AND SAFETY INSTRUCTIONS.

MEETS DEPTH AND SHAPE MINIMUM STANDARD ANSI/NSPI5-2003



STAKE OUT

STEEL CHECK

SHAPE : KIDNEY	SIZE : 16' X 33'-10"	HAND : RIGHT	PANEL HEIGHT : 3'-6"	DRAWN BY : NM-BCC
DWG # : MN1634KD-19	DATE : 1/12/2017	REVISION # : 01	KIT REF : MN1634KD-19-R	B



SHAPE : KIDNEY	SIZE : 18' X 34'-1"	HAND : LEFT	PANEL HEIGHT : 3'-6"	PANEL TYPE : 5" TOP
PERIMETER : 89'	VOLUME : 20,145 US GAL.	SURFACE AREA : 511.167 SQ. FT.	SCALE : N.T.S	DRAWN BY : NM-BCC
DWG # : MN1834KD-19	DATE : 1/12/2017	REVISION # : 01	KIT REF : MN1834KD-19-L	A

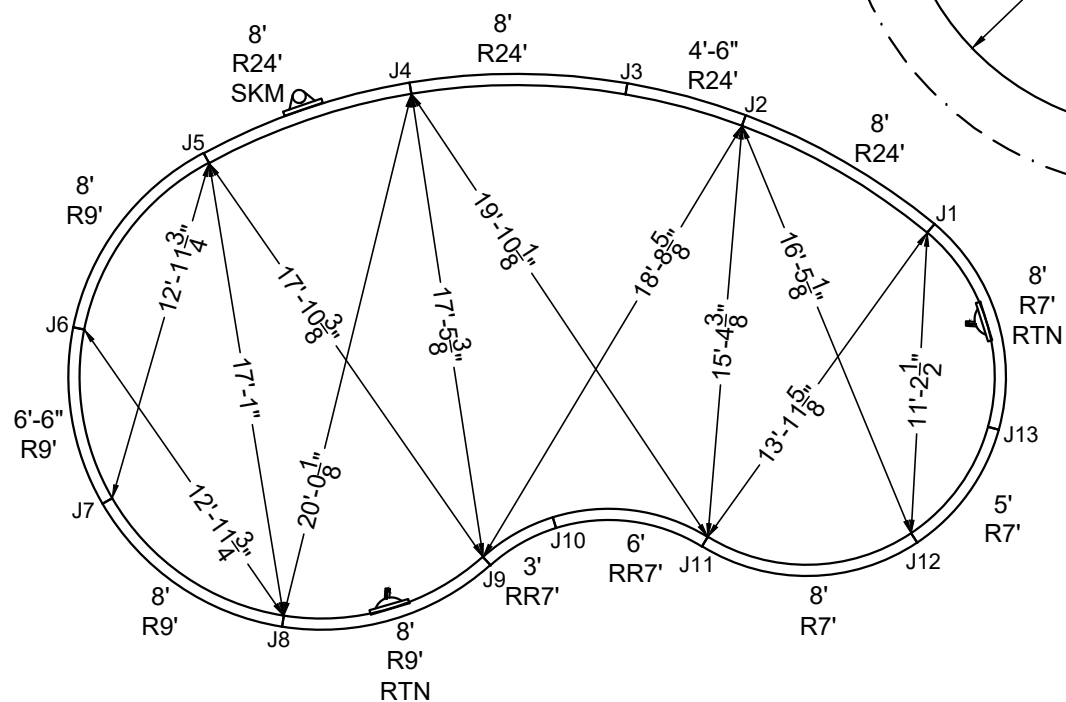
ALL DIMENSIONS ARE FINISHED

DIVING / SLIDE EQUIPMENT DISCLAIMER:

THE BOTTOM CONFIGURATION SHOWN MEETS WITH THE CURRENT ISPSA MINIMUM STANDARDS FOR POOLS APPROVED FOR THE USE WITH MANUFACTURED DIVING EQUIPMENT. ALL DIVING EQUIPMENT MUST BE INSTALLED AND LOCATED IN ACCORDANCE WITH THE DIVING / SLIDE MANUFACTURER'S RECOMMENDATIONS. IF DIVING EQUIPMENT IS INSTALLED: PLEASE FOLLOW ALL THE DIVING / SLIDE EQUIPMENT MANUFACTURER'S INSTALLATION, USE AND SAFETY INSTRUCTIONS.

MEETS DEPTH AND SHAPE MINIMUM STANDARD ANSI/NSPI5-2003

STEEL CHECK



STAKE OUT

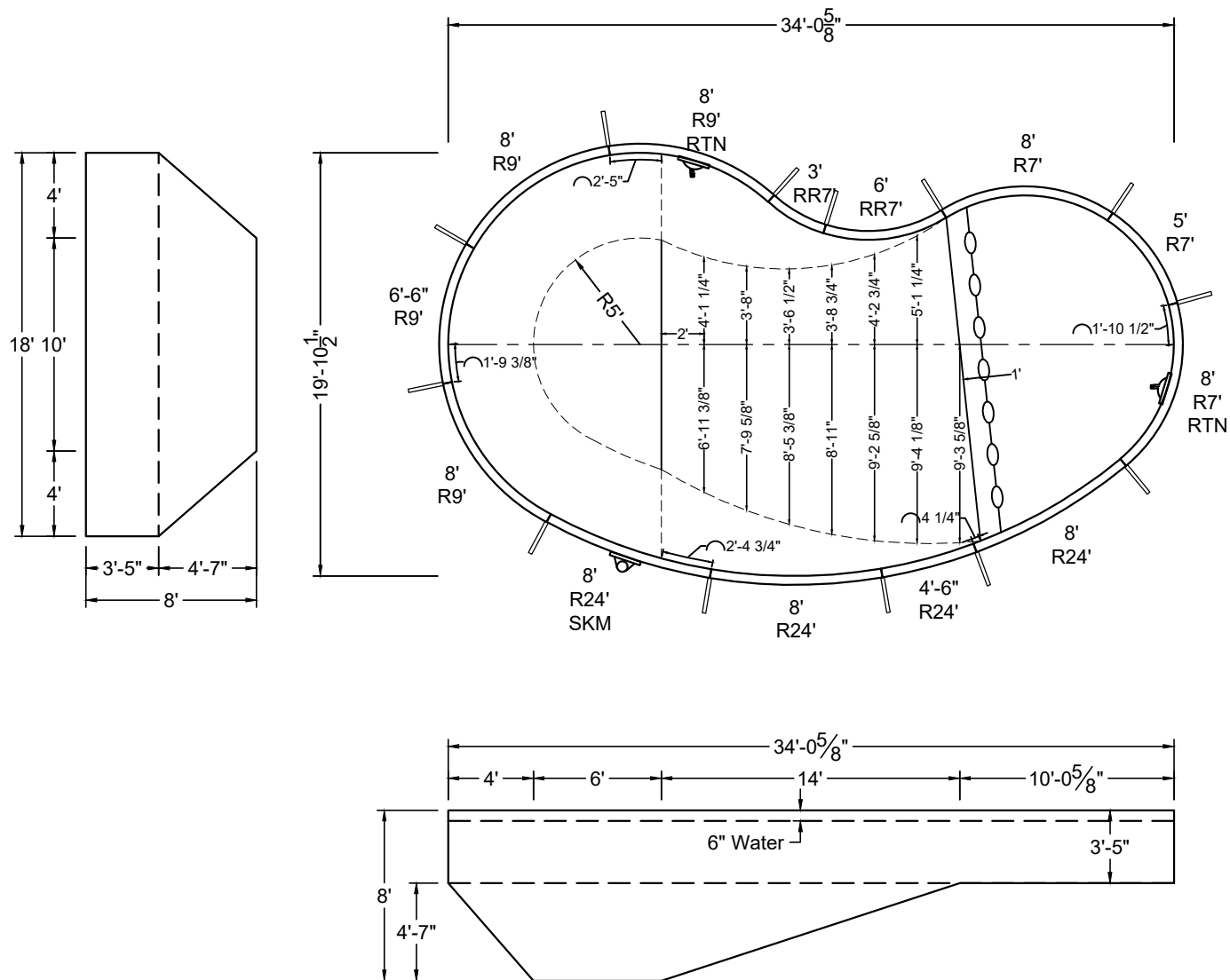
SHAPE: KIDNEY	SIZE: 18' X 34'-1"	HAND: LEFT	PANEL HEIGHT: 3'-6"	DRAWN BY: NM-BCC
DWG #: MN1834KD-19	DATE: 1/12/2017	REVISION #: 01	KIT REF: MN1834KD-19-L	B

ALL DIMENSIONS ARE FINISHED

DIVING / SLIDE EQUIPMENT DISCLAIMER:

THE BOTTOM CONFIGURATION SHOWN MEETS WITH THE CURRENT ISPSC MINIMUM STANDARDS FOR POOLS APPROVED FOR THE USE WITH MANUFACTURED DIVING EQUIPMENT. ALL DIVING EQUIPMENT MUST BE INSTALLED AND LOCATED IN ACCORDANCE WITH THE DIVING / SLIDE MANUFACTURER'S RECOMMENDATIONS. IF DIVING EQUIPMENT IS INSTALLED: PLEASE FOLLOW ALL THE DIVING / SLIDE EQUIPMENT MANUFACTURER'S INSTALLATION, USE AND SAFETY INSTRUCTIONS.

MEETS DEPTH AND SHAPE MINIMUM STANDARD ANSI/NSPI5-2003



SHAPE : KIDNEY

SIZE : 18' X 34'-1"

HAND : RIGHT

PANEL HEIGHT : 3'-6"

PANEL TYPE : 5" TOP

PERIMETER : 89'

VOLUME : 20,145 US GAL.

SURFACE AREA : 511.167 SQ. FT.

SCALE : N.T.S

DRAWN BY : NM-BCC

DWG # : MN1834KD-19

DATE : 1/12/2017

REVISION # : 01

KIT REF : MN1834KD-19-R

A



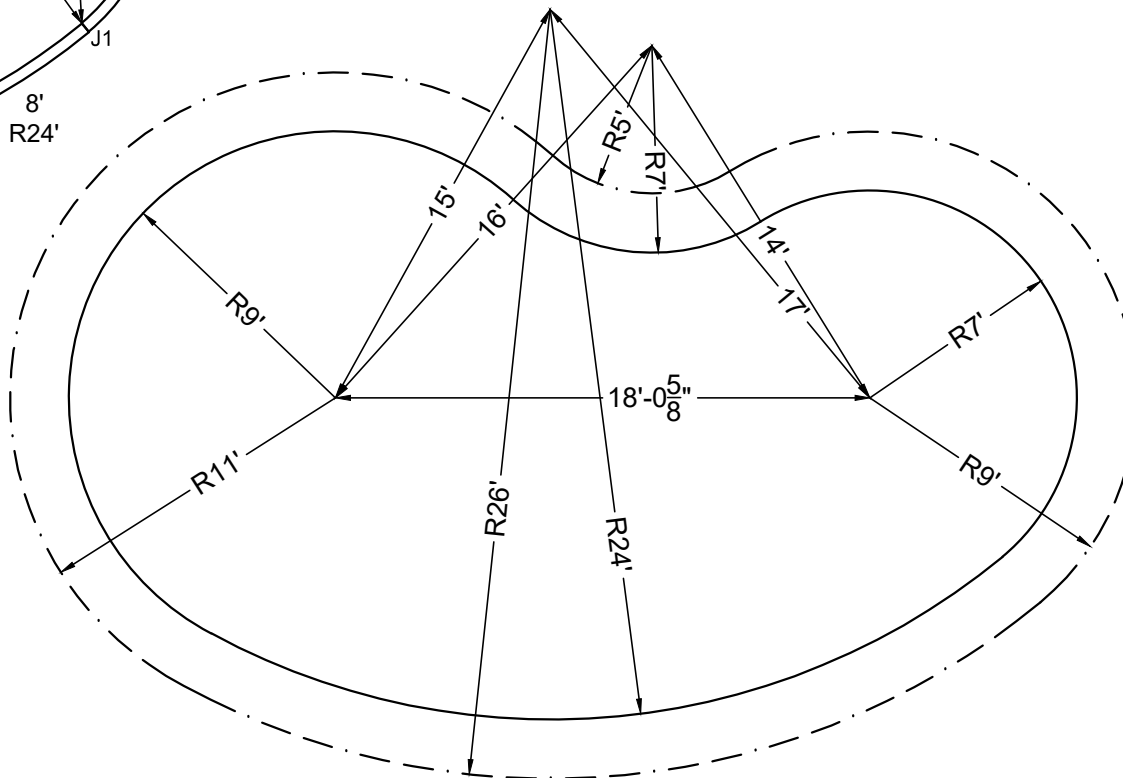
DIVING / SLIDE EQUIPMENT DISCLAIMER:

THE BOTTOM CONFIGURATION SHOWN MEETS WITH THE CURRENT IPSC MINIMUM STANDARDS FOR POOLS APPROVED FOR THE USE WITH MANUFACTURED DIVING EQUIPMENT. ALL DIVING EQUIPMENT MUST BE INSTALLED AND LOCATED IN ACCORDANCE WITH THE DIVING / SLIDE MANUFACTURER'S RECOMMENDATIONS. IF DIVING EQUIPMENT IS INSTALLED: PLEASE FOLLOW ALL THE DIVING / SLIDE EQUIPMENT MANUFACTURER'S INSTALLATION, USE AND SAFETY INSTRUCTIONS.

MEETS DEPTH AND SHAPE MINIMUM STANDARD ANSI/NSPI5-2003



STAKE OUT



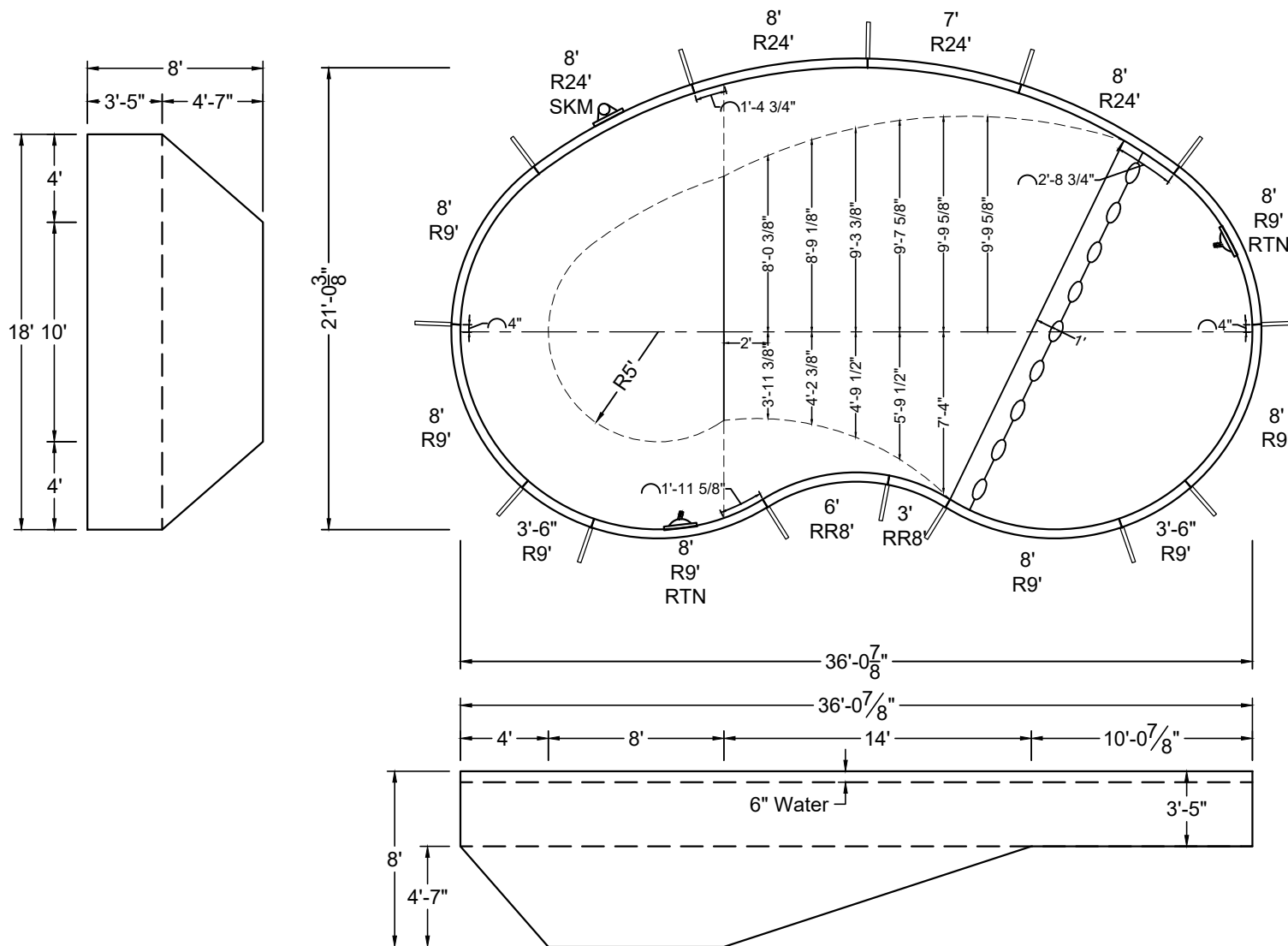
SHAPE : KIDNEY	SIZE : 18' X 34'-1"	HAND : RIGHT	PANEL HEIGHT : 3'-6"	DRAWN BY : NM-BCC
DWG # : MN1834KD-19	DATE : 1/12/2017	REVISION # : 01	KIT REF : MN1834KD-19-R	B

ALL DIMENSIONS ARE FINISHED

DIVING / SLIDE EQUIPMENT DISCLAIMER:

THE BOTTOM CONFIGURATION SHOWN MEETS WITH THE CURRENT ISPSC MINIMUM STANDARDS FOR POOLS APPROVED FOR THE USE WITH MANUFACTURED DIVING EQUIPMENT. ALL DIVING EQUIPMENT MUST BE INSTALLED AND LOCATED IN ACCORDANCE WITH THE DIVING / SLIDE MANUFACTURER'S RECOMMENDATIONS. IF DIVING EQUIPMENT IS INSTALLED: PLEASE FOLLOW ALL THE DIVING / SLIDE EQUIPMENT MANUFACTURER'S INSTALLATION, USE AND SAFETY INSTRUCTIONS.

MEETS DEPTH AND SHAPE MINIMUM STANDARD ANSI/NSPI5-2003



SHAPE : KIDNEY

SIZE : 18' X 36'-1"

HAND : LEFT

PANEL HEIGHT : 3'-6"

PANEL TYPE : 5" TOP

PERIMETER : 95'

VOLUME : 23,628 US GAL.

SURFACE AREA : 605.966 SQ. FT.

SCALE : N.T.S

DRAWN BY : NM-BCC

DWG # : MN1836KD-19

DATE : 1/12/2017

REVISION # : 01

KIT REF : MN1836KD-19-L

A

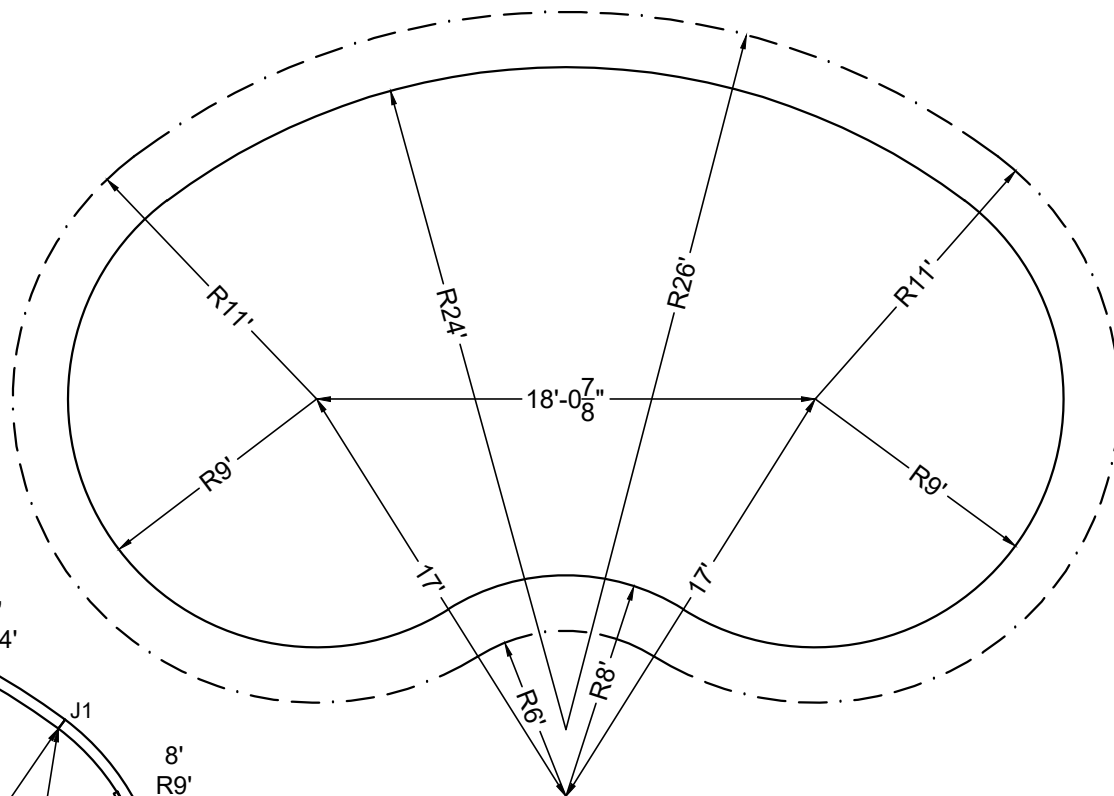
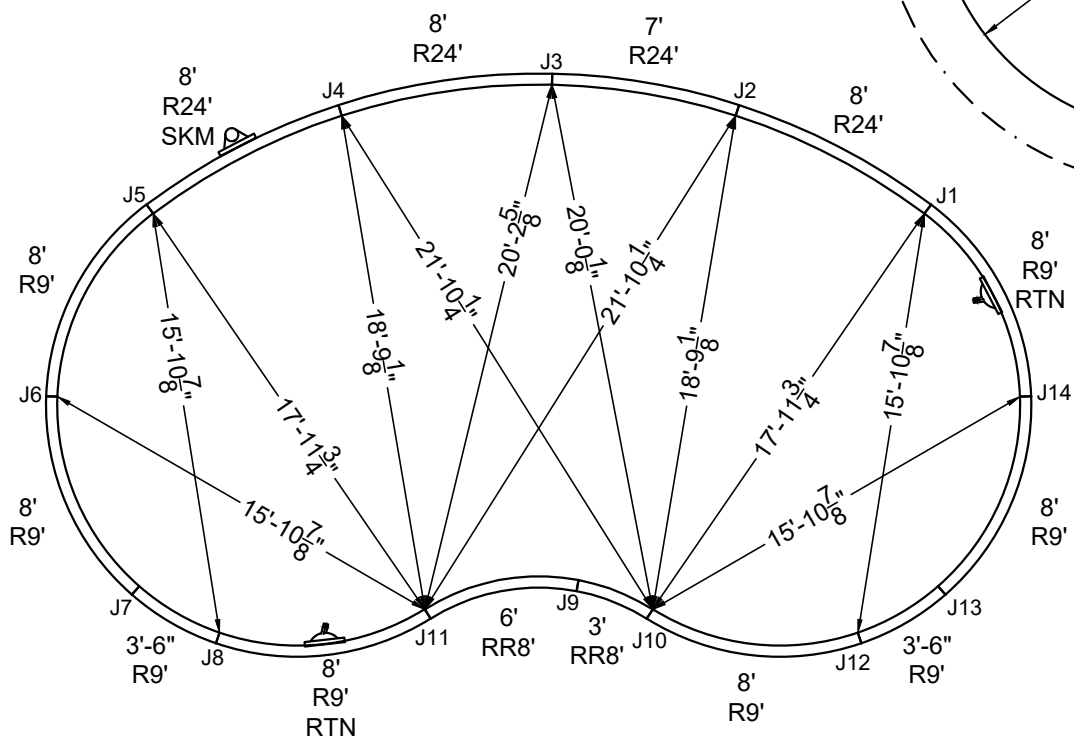
ALL DIMENSIONS ARE FINISHED

DIVING / SLIDE EQUIPMENT DISCLAIMER:

THE BOTTOM CONFIGURATION SHOWN MEETS WITH THE CURRENT ISPS MINIMUM STANDARDS FOR POOLS APPROVED FOR THE USE WITH MANUFACTURED DIVING EQUIPMENT. ALL DIVING EQUIPMENT MUST BE INSTALLED AND LOCATED IN ACCORDANCE WITH THE DIVING / SLIDE MANUFACTURER'S RECOMMENDATIONS. IF DIVING EQUIPMENT IS INSTALLED: PLEASE FOLLOW ALL THE DIVING / SLIDE EQUIPMENT MANUFACTURER'S INSTALLATION, USE AND SAFETY INSTRUCTIONS.

MEETS DEPTH AND SHAPE MINIMUM STANDARD ANSI/NSPI-2003

STEEL CHECK



STAKE OUT

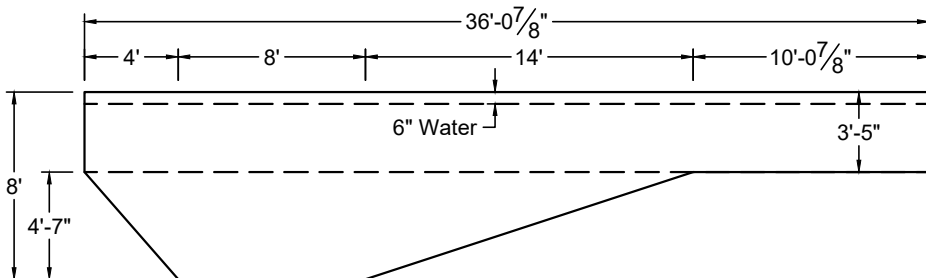
SHAPE : KIDNEY	SIZE : 18' X 36'-1"	HAND : LEFT	PANEL HEIGHT : 3'-6"	DRAWN BY : NM-BCC
DWG # : MN1836KD-19	DATE : 1/12/2017	REVISION # : 01	KIT REF : MN1836KD-19-L	B



DIVING / SLIDE EQUIPMENT DISCLAIMER:

THE BOTTOM CONFIGURATION SHOWN MEETS WITH THE CURRENT IPSC MINIMUM STANDARDS FOR POOLS APPROVED FOR THE USE WITH MANUFACTURED DIVING EQUIPMENT. ALL DIVING EQUIPMENT MUST BE INSTALLED AND LOCATED IN ACCORDANCE WITH THE DIVING / SLIDE MANUFACTURER'S RECOMMENDATIONS. IF DIVING EQUIPMENT IS INSTALLED: PLEASE FOLLOW ALL THE DIVING / SLIDE EQUIPMENT MANUFACTURER'S INSTALLATION, USE AND SAFETY INSTRUCTIONS.

MEETS DEPTH AND SHAPE MINIMUM STANDARD ANSI/NSPI5-2003



SHAPE : KIDNEY	SIZE : 18' X 36'-1"	HAND : RIGHT	PANEL HEIGHT : 3'-6"	PANEL TYPE : 5" TOP
PERIMETER : 95'	VOLUME : 23,628 US GAL.	SURFACE AREA : 605.966 SQ. FT.	SCALE : N.T.S	DRAWN BY : NM-BCC
DWG # : MN1836KD-19	DATE : 1/12/2017	REVISION # : 01	KIT REF : MN1836KD-19-R	A

A

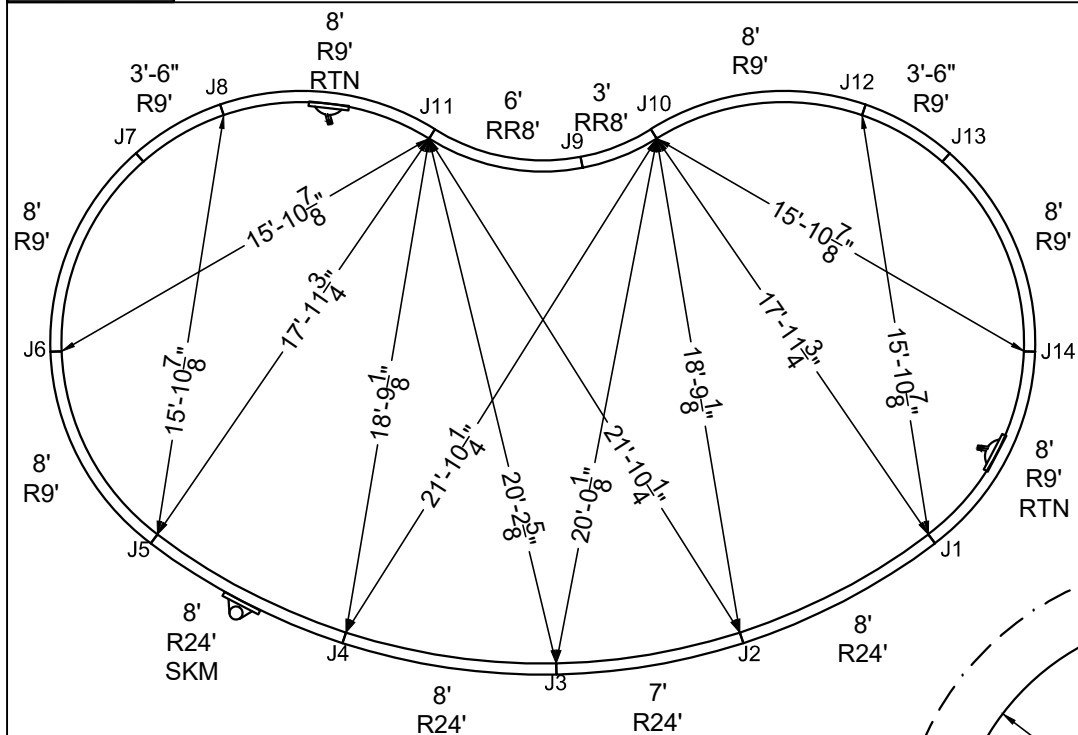


ALL DIMENSIONS ARE FINISHED

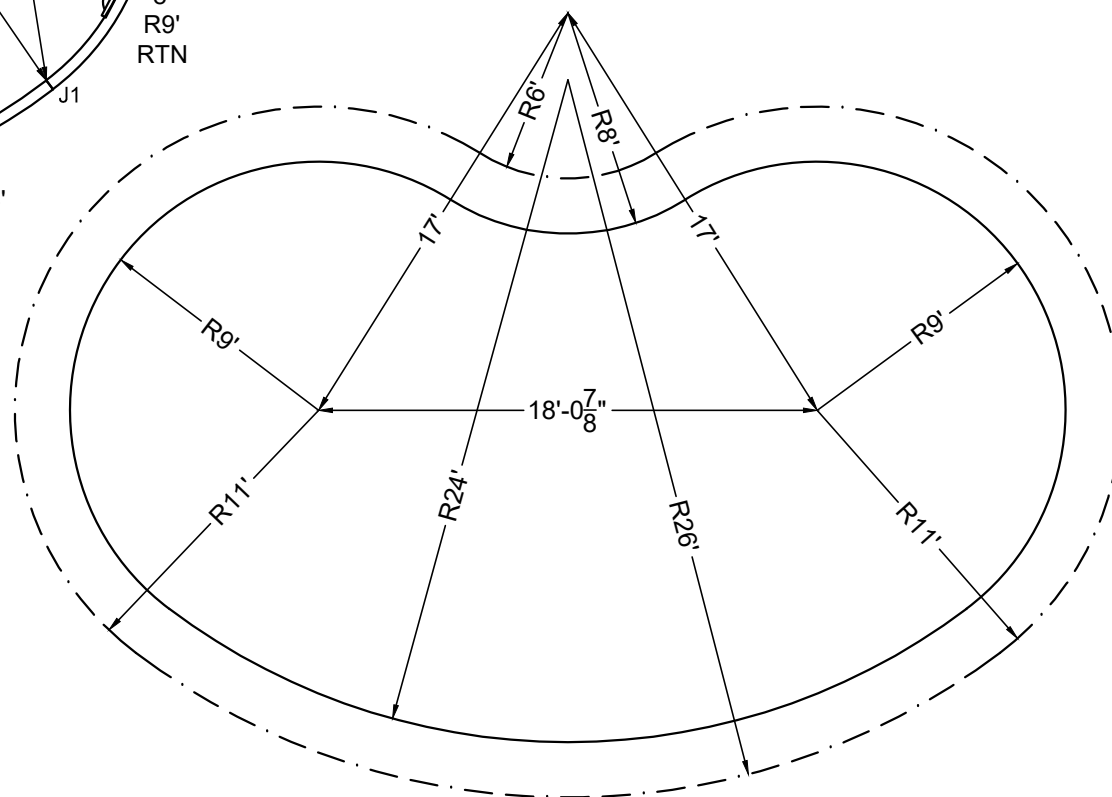
DIVING / SLIDE EQUIPMENT DISCLAIMER:

THE BOTTOM CONFIGURATION SHOWN MEETS WITH THE CURRENT IPSC MINIMUM STANDARDS FOR POOLS APPROVED FOR THE USE WITH MANUFACTURED DIVING EQUIPMENT. ALL DIVING EQUIPMENT MUST BE INSTALLED AND LOCATED IN ACCORDANCE WITH THE DIVING / SLIDE MANUFACTURER'S RECOMMENDATIONS. IF DIVING EQUIPMENT IS INSTALLED: PLEASE FOLLOW ALL THE DIVING / SLIDE EQUIPMENT MANUFACTURER'S INSTALLATION, USE AND SAFETY INSTRUCTIONS.

MEETS DEPTH AND SHAPE MINIMUM STANDARD ANSI/NSPI5-2003



STEEL CHECK



STAKE OUT

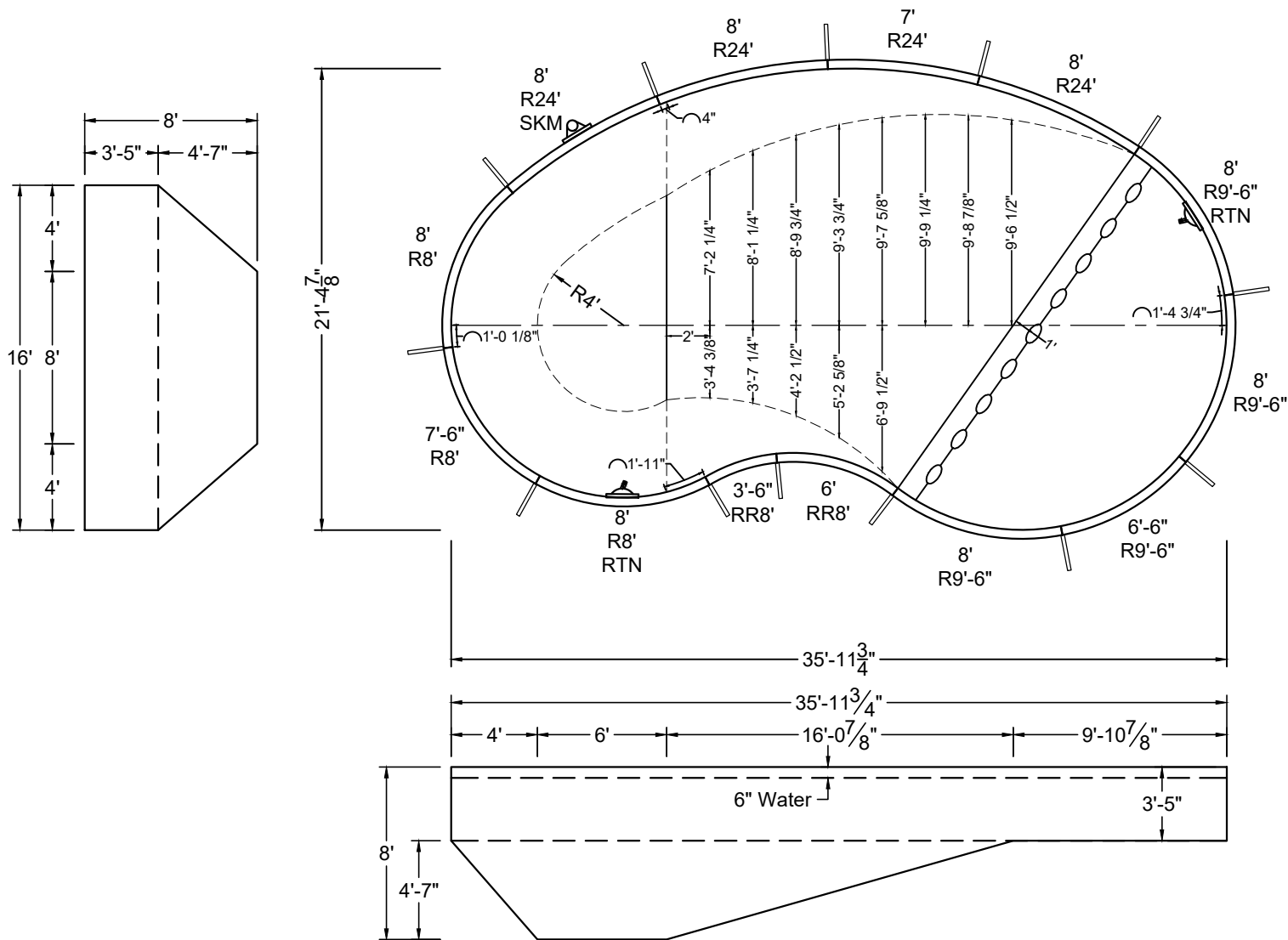
SHAPE : KIDNEY	SIZE : 18' X 36'-1"	HAND : RIGHT	PANEL HEIGHT : 3'-6"	DRAWN BY : NM-BCC
DWG # : MN1836KD-19	DATE : 1/12/2017	REVISION # : 01	KIT REF : MN1836KD-19-R	B

ALL DIMENSIONS ARE FINISHED

DIVING / SLIDE EQUIPMENT DISCLAIMER:

THE BOTTOM CONFIGURATION SHOWN MEETS WITH THE CURRENT ISPC MINIMUM STANDARDS FOR POOLS APPROVED FOR THE USE WITH MANUFACTURED DIVING EQUIPMENT. ALL DIVING EQUIPMENT MUST BE INSTALLED AND LOCATED IN ACCORDANCE WITH THE DIVING / SLIDE MANUFACTURER'S RECOMMENDATIONS. IF DIVING EQUIPMENT IS INSTALLED: PLEASE FOLLOW ALL THE DIVING / SLIDE EQUIPMENT MANUFACTURER'S INSTALLATION, USE AND SAFETY INSTRUCTIONS.

MEETS DEPTH AND SHAPE MINIMUM STANDARD ANSI/NSPI5-2003



SHAPE : KIDNEY	SIZE : 16' X 36'	HAND : LEFT	PANEL HEIGHT : 3'-6"	PANEL TYPE : 5" TOP
PERIMETER : 94'-6"	VOLUME : 21,921 US GAL.	SURFACE AREA : 592.446 SQ. FT.	SCALE : N.T.S	DRAWN BY : NM-BCC
DWG # : MN1936KD-19	DATE : 1/12/2017	REVISION # : 01	KIT REF : MN1936KD-19-L	A

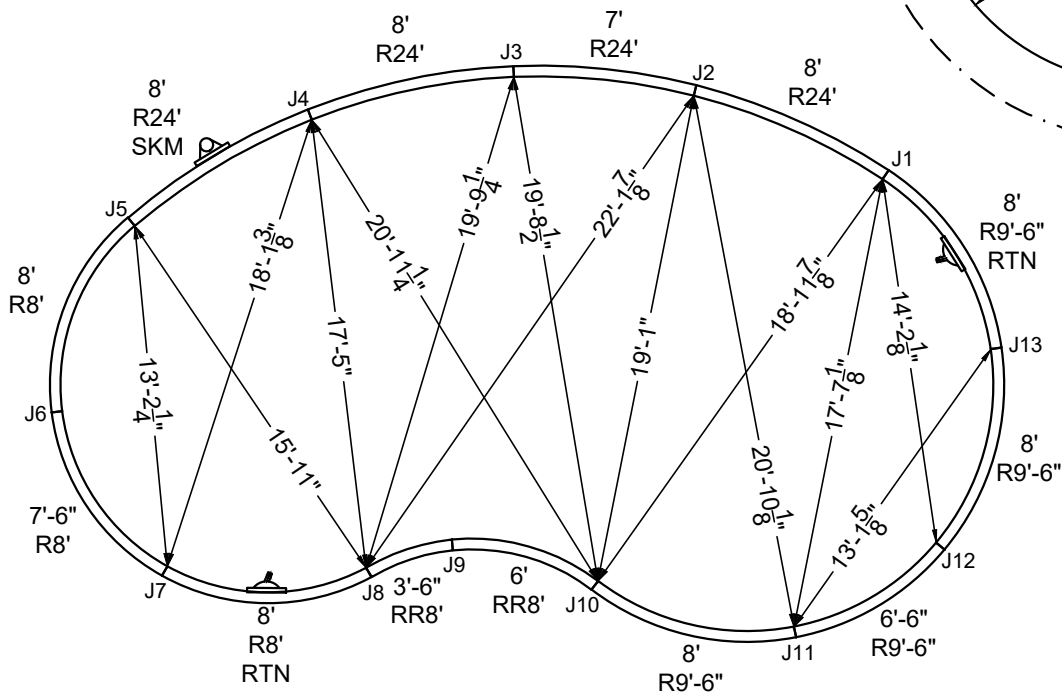


DIVING / SLIDE EQUIPMENT DISCLAIMER:

THE BOTTOM CONFIGURATION SHOWN MEETS WITH THE CURRENT ISPC MINIMUM STANDARDS FOR POOLS APPROVED FOR THE USE WITH MANUFACTURED DIVING EQUIPMENT. ALL DIVING EQUIPMENT MUST BE INSTALLED AND LOCATED IN ACCORDANCE WITH THE DIVING / SLIDE MANUFACTURER'S RECOMMENDATIONS. IF DIVING EQUIPMENT IS INSTALLED: PLEASE FOLLOW ALL THE DIVING / SLIDE EQUIPMENT MANUFACTURER'S INSTALLATION, USE AND SAFETY INSTRUCTIONS.

MEETS DEPTH AND SHAPE MINIMUM STANDARD ANSI/NSPI5-2003

STEEL CHECK



STAKE OUT

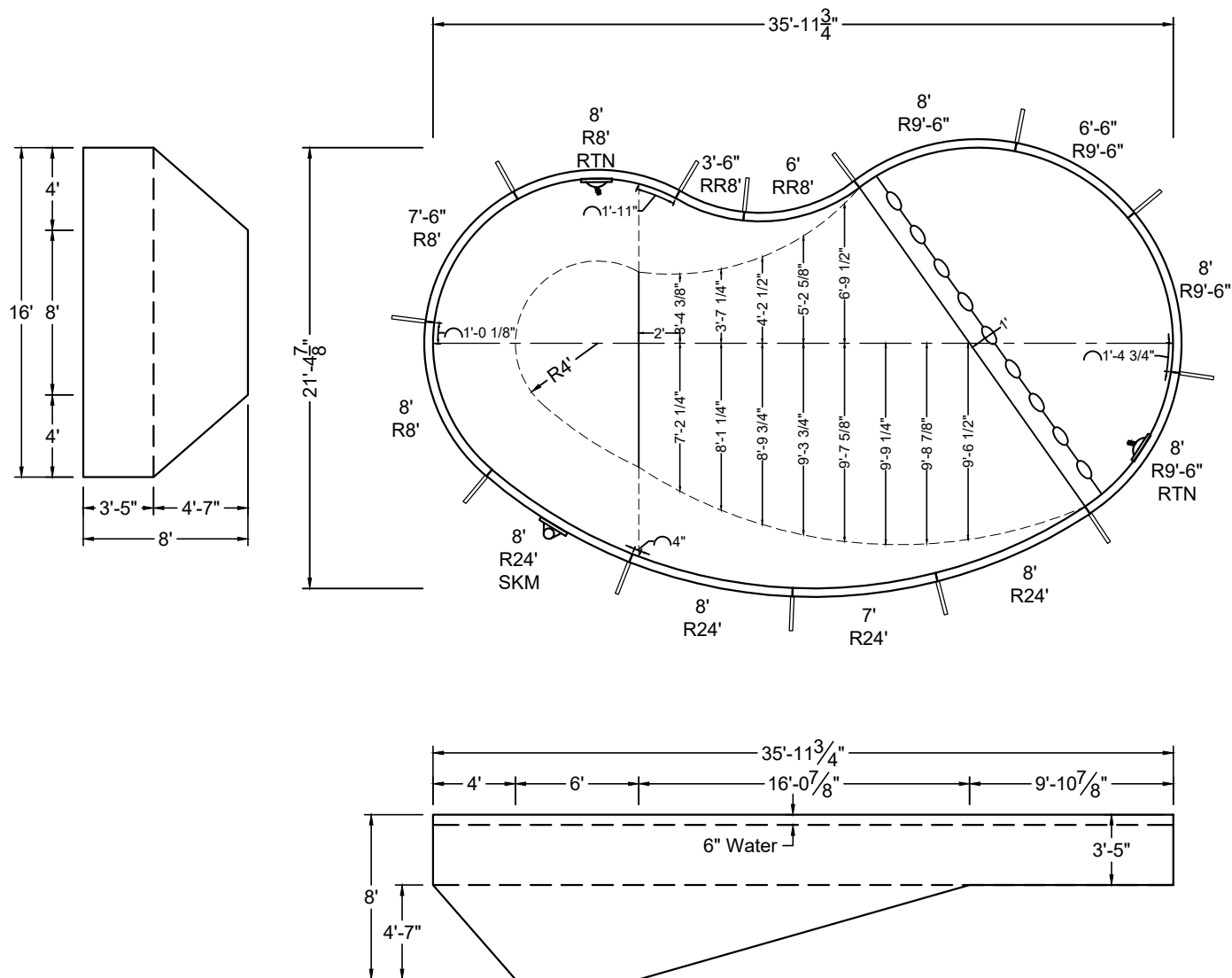
SHAPE : KIDNEY	SIZE : 16' X 36'	HAND : LEFT	PANEL HEIGHT : 3'-6"	DRAWN BY : NM-BCC
DWG # : MN1936KD-19	DATE : 1/12/2017	REVISION # : 01	KIT REF : MN1936KD-19-L	B

ALL DIMENSIONS ARE FINISHED

DIVING / SLIDE EQUIPMENT DISCLAIMER:

THE BOTTOM CONFIGURATION SHOWN MEETS WITH THE CURRENT ISPS MINIMUM STANDARDS FOR POOLS APPROVED FOR THE USE WITH MANUFACTURED DIVING EQUIPMENT. ALL DIVING EQUIPMENT MUST BE INSTALLED AND LOCATED IN ACCORDANCE WITH THE DIVING / SLIDE MANUFACTURER'S RECOMMENDATIONS. IF DIVING EQUIPMENT IS INSTALLED: PLEASE FOLLOW ALL THE DIVING / SLIDE EQUIPMENT MANUFACTURER'S INSTALLATION, USE AND SAFETY INSTRUCTIONS.

MEETS DEPTH AND SHAPE MINIMUM STANDARD ANSI/NSPI5-2003



SHAPE : KIDNEY

SIZE : 16' X 36'

HAND : RIGHT

PANEL HEIGHT : 3'-6"

PANEL TYPE : 5" TOP

PERIMETER : 94'-6"

VOLUME : 21,921 US GAL.

SURFACE AREA : 592.446 SQ. FT.

SCALE : N.T.S

DRAWN BY : NM-BCC

DWG # : MN1936KD-19

DATE : 1/12/2017

REVISION # : 01

KIT REF : MN1936KD-19-R

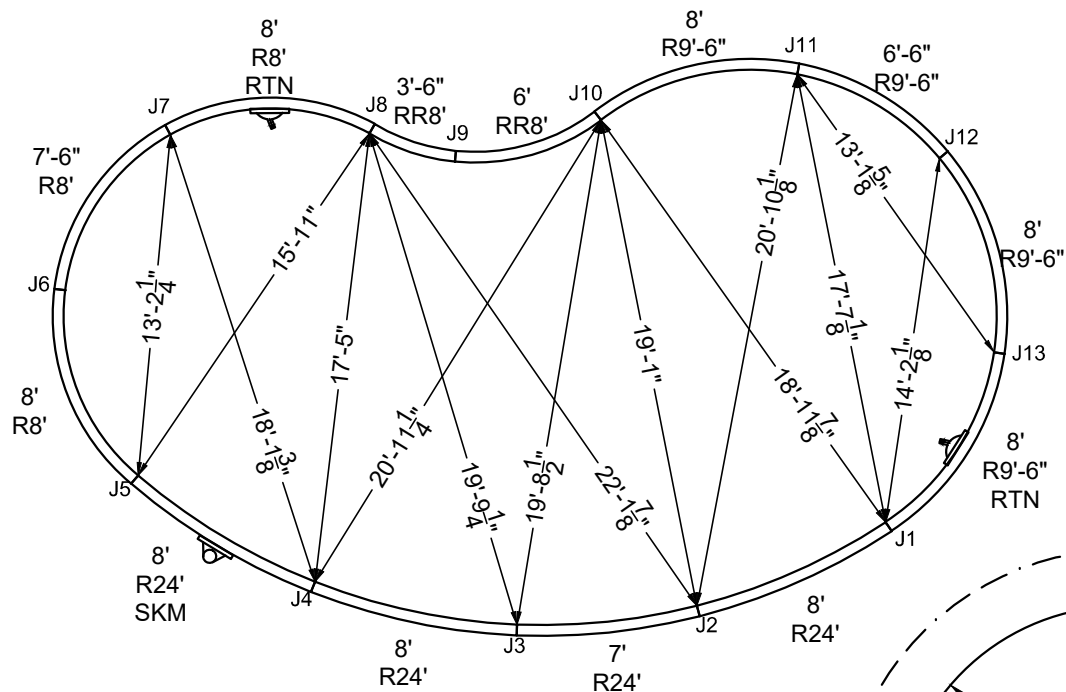
A

ALL DIMENSIONS ARE FINISHED

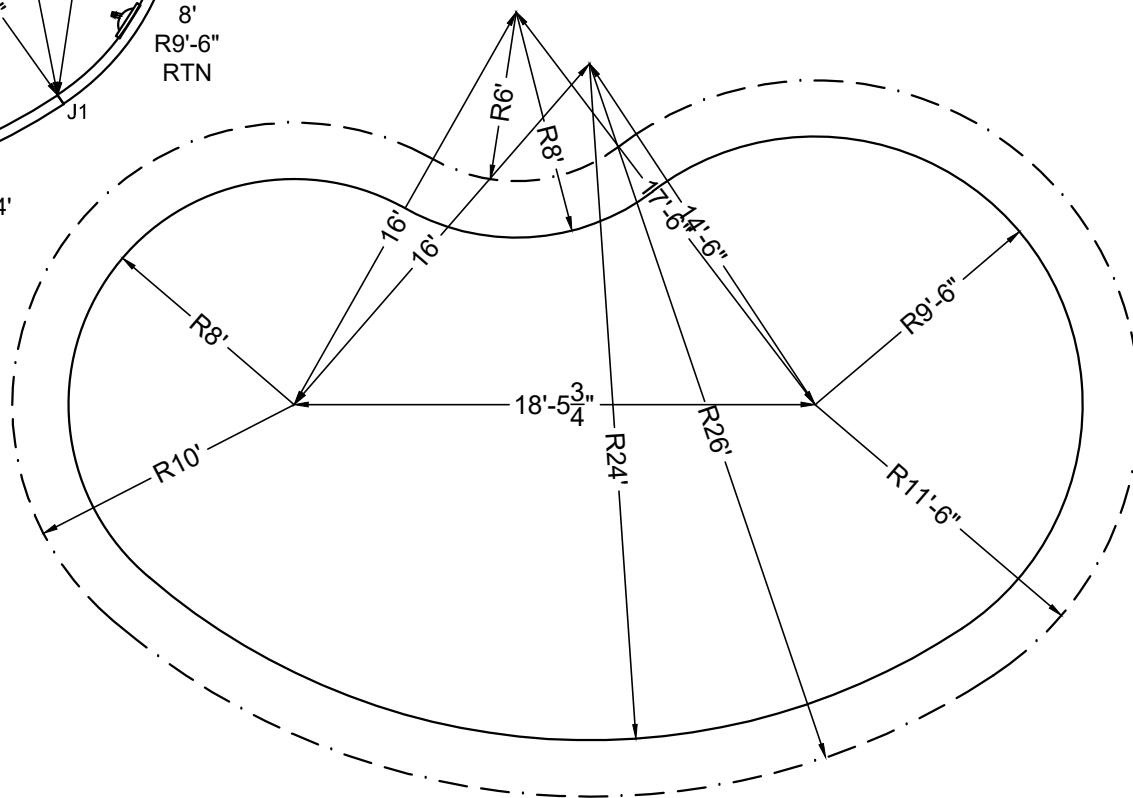
DIVING / SLIDE EQUIPMENT DISCLAIMER:

THE BOTTOM CONFIGURATION SHOWN MEETS WITH THE CURRENT ISPS SC MINIMUM STANDARDS FOR POOLS APPROVED FOR THE USE WITH MANUFACTURED DIVING EQUIPMENT. ALL DIVING EQUIPMENT MUST BE INSTALLED AND LOCATED IN ACCORDANCE WITH THE DIVING / SLIDE MANUFACTURER'S RECOMMENDATIONS. IF DIVING EQUIPMENT IS INSTALLED: PLEASE FOLLOW ALL THE DIVING / SLIDE EQUIPMENT MANUFACTURER'S INSTALLATION, USE AND SAFETY INSTRUCTIONS.

MEETS DEPTH AND SHAPE MINIMUM STANDARD ANSI/NSPI5-2003



STAKE OUT



SHAPE: KIDNEY

SIZE: 16' X 36'

HAND: RIGHT

PANEL HEIGHT: 3'-6"

DRAWN BY: NM-BCC

DWG #: MN1936KD-19

DATE: 1/12/2017

REVISION #: 01

KIT REF: MN1936KD-19-R

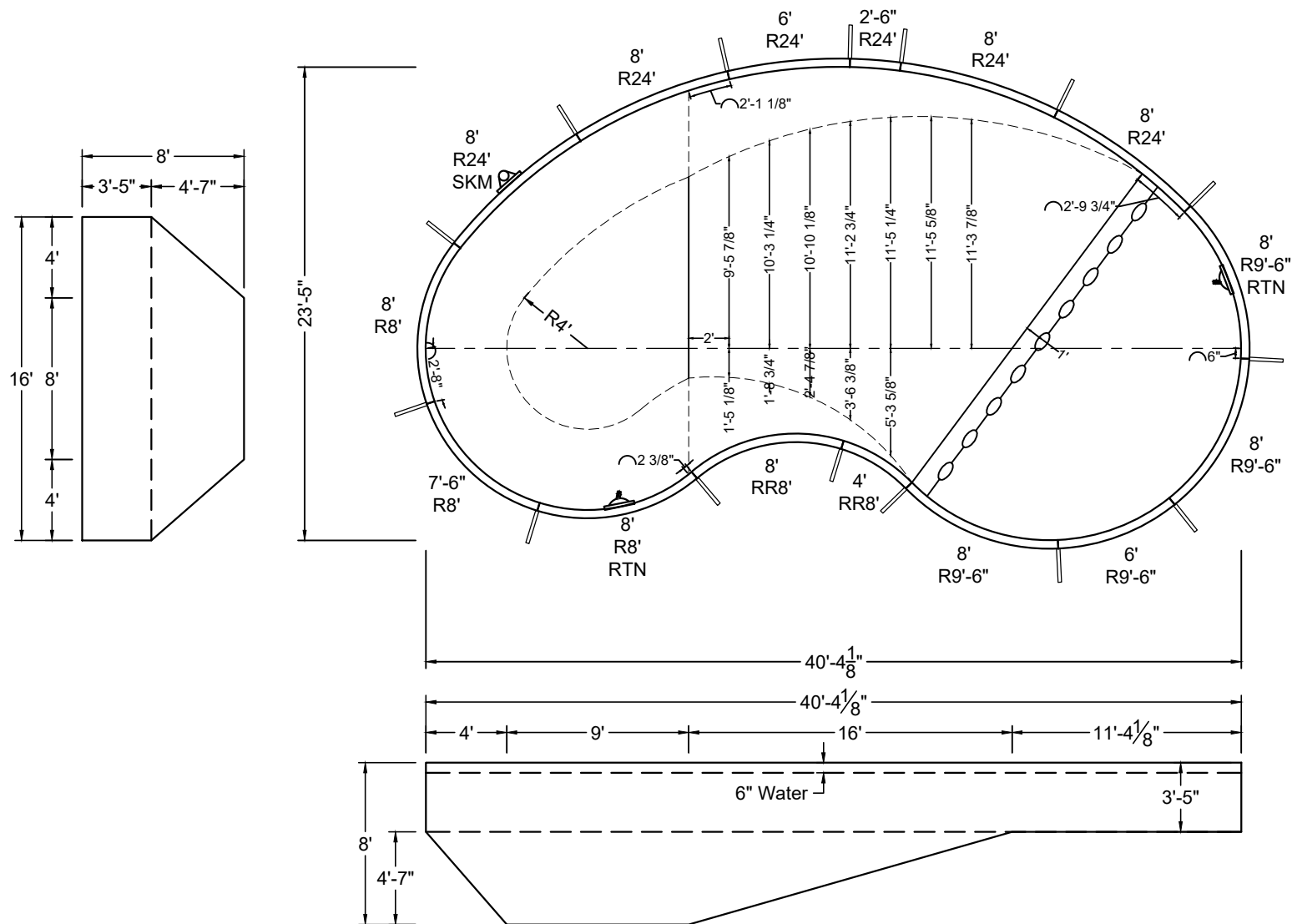
B

ALL DIMENSIONS ARE FINISHED

DIVING / SLIDE EQUIPMENT DISCLAIMER:

THE BOTTOM CONFIGURATION SHOWN MEETS WITH THE CURRENT ISPSC MINIMUM STANDARDS FOR POOLS APPROVED FOR THE USE WITH MANUFACTURED DIVING EQUIPMENT. ALL DIVING EQUIPMENT MUST BE INSTALLED AND LOCATED IN ACCORDANCE WITH THE DIVING / SLIDE MANUFACTURER'S RECOMMENDATIONS. IF DIVING EQUIPMENT IS INSTALLED: PLEASE FOLLOW ALL THE DIVING / SLIDE EQUIPMENT MANUFACTURER'S INSTALLATION, USE AND SAFETY INSTRUCTIONS.

MEETS DEPTH AND SHAPE MINIMUM STANDARD ANSI/NSPI5-2003



SHAPE : KIDNEY	SIZE : 16' X 40'-4"	HAND : LEFT	PANEL HEIGHT : 3'-6"	PANEL TYPE : 5" TOP
PERIMETER : 106'	VOLUME : 25,542 US GAL.	SURFACE AREA : 699.521 SQ. FT.	SCALE : N.T.S	DRAWN BY : NM-BCC
DWG # : MN1940KD-19	DATE : 1/12/2017	REVISION # : 01	KIT REF : MN1940KD-19-L	A



MEGNA
POOLS

Magna Plastic Packaging Corp.

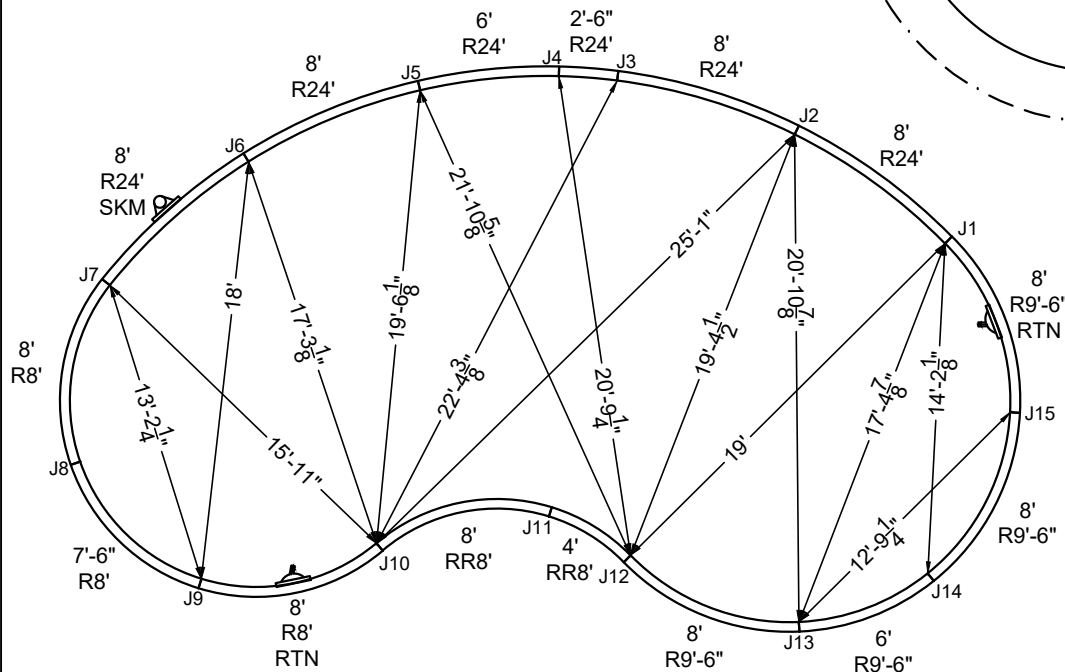
DIVING / SLIDE EQUIPMENT DISCLAIMER:

THE BOTTOM CONFIGURATION SHOWN MEETS WITH THE CURRENT ISPC MINIMUM STANDARDS FOR POOLS APPROVED FOR THE USE WITH MANUFACTURED DIVING EQUIPMENT. ALL DIVING EQUIPMENT MUST BE INSTALLED AND LOCATED IN ACCORDANCE WITH THE DIVING / SLIDE MANUFACTURER'S RECOMMENDATIONS. IF DIVING EQUIPMENT IS INSTALLED: PLEASE FOLLOW ALL THE DIVING / SLIDE EQUIPMENT MANUFACTURER'S INSTALLATION, USE AND SAFETY INSTRUCTIONS.

MEETS DEPTH AND SHAPE MINIMUM STANDARD ANSI/NSPI5-2003

ALL DIMENSIONS ARE FINISHED

STEEL CHECK



STAKE OUT

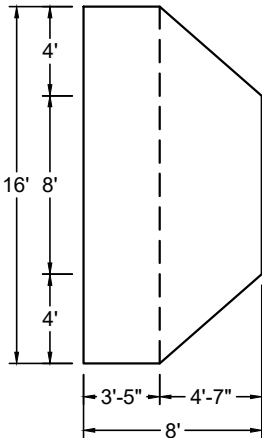
SHAPE : KIDNEY	SIZE : 16' X 40'-4"	HAND : LEFT	PANEL HEIGHT : 3'-6"	DRAWN BY : NM-BCC
DWG # : MN1940KD-19	DATE : 1/12/2017	REVISION # : 01	KIT REF : MN1940KD-19-L	B



DIVING / SLIDE EQUIPMENT DISCLAIMER:

THE BOTTOM CONFIGURATION SHOWN MEETS WITH THE CURRENT IPSC MINIMUM STANDARDS FOR POOLS APPROVED FOR THE USE WITH MANUFACTURED DIVING EQUIPMENT. ALL DIVING EQUIPMENT MUST BE INSTALLED AND LOCATED IN ACCORDANCE WITH THE DIVING / SLIDE MANUFACTURER'S RECOMMENDATIONS. IF DIVING EQUIPMENT IS INSTALLED: PLEASE FOLLOW ALL THE DIVING / SLIDE EQUIPMENT MANUFACTURER'S INSTALLATION, USE AND SAFETY INSTRUCTIONS.

MEETS DEPTH AND SHAPE MINIMUM STANDARD ANSI/NSPI5-2003



SHAPE : KIDNEY	SIZE : 16' X 40'-4"	HAND : RIGHT	PANEL HEIGHT : 3'-6"	PANEL TYPE : 5" TOP
PERIMETER : 106'	VOLUME : 25,542 US GAL.	SURFACE AREA : 699.521 SQ. FT.	SCALE : N.T.S	DRAWN BY : NM-BCC
DWG # : MN1940KD-19	DATE : 1/12/2017	REVISION # : 01	KIT REF : MN1940KD-19-R	A



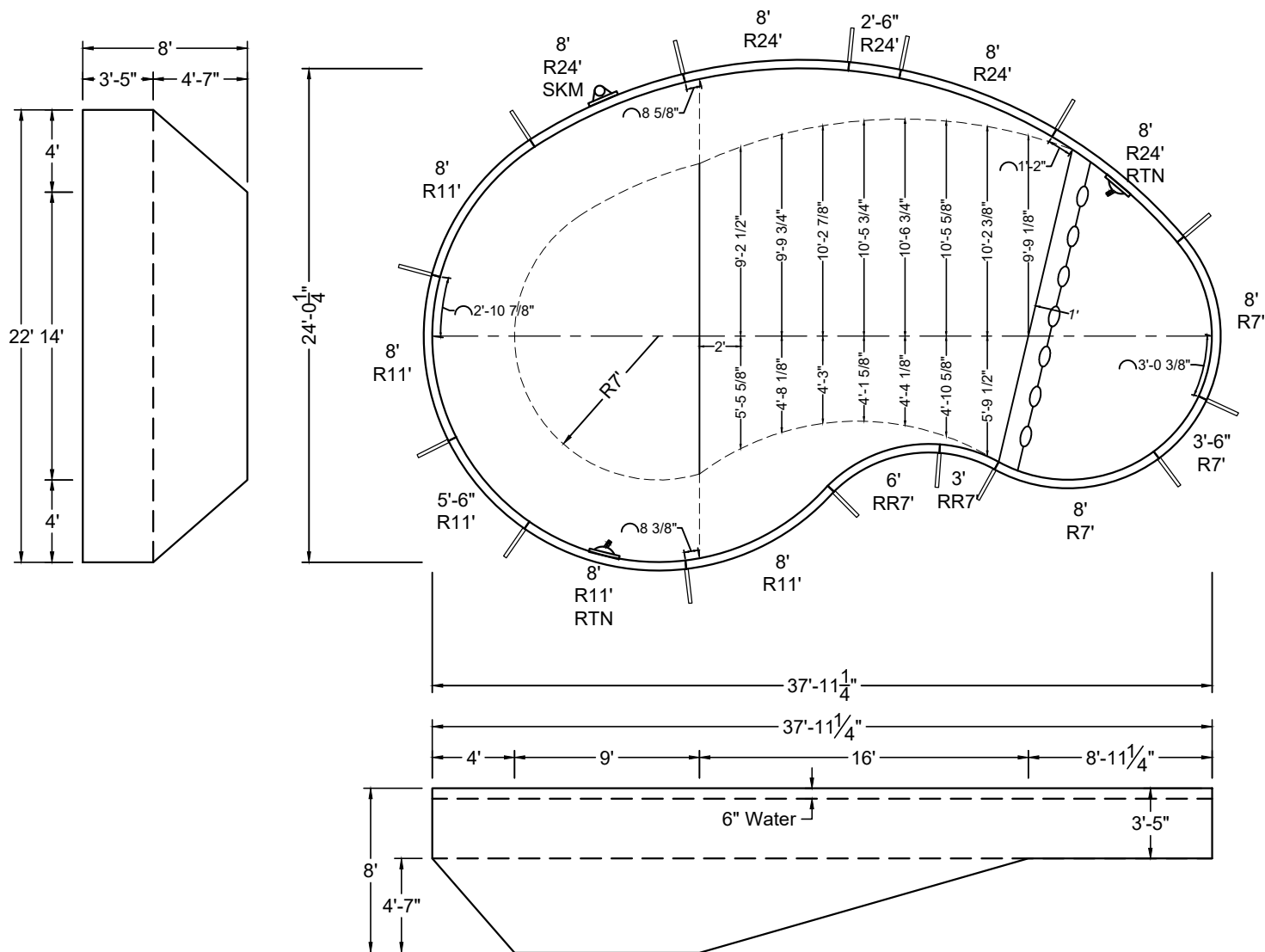
SHAPE : KIDNEY	SIZE : 16' X 40'-4"	HAND : RIGHT	PANEL HEIGHT : 3'-6"	DRAWN BY : NM-BCC
DWG # : MN1940KD-19	DATE : 1/12/2017	REVISION # : 01	KIT REF : MN1940KD-19-R	B

ALL DIMENSIONS ARE FINISHED

DIVING / SLIDE EQUIPMENT DISCLAIMER:

THE BOTTOM CONFIGURATION SHOWN MEETS WITH THE CURRENT ISPSC MINIMUM STANDARDS FOR POOLS APPROVED FOR THE USE WITH MANUFACTURED DIVING EQUIPMENT. ALL DIVING EQUIPMENT MUST BE INSTALLED AND LOCATED IN ACCORDANCE WITH THE DIVING / SLIDE MANUFACTURER'S RECOMMENDATIONS. IF DIVING EQUIPMENT IS INSTALLED: PLEASE FOLLOW ALL THE DIVING / SLIDE EQUIPMENT MANUFACTURER'S INSTALLATION, USE AND SAFETY INSTRUCTIONS.

MEETS DEPTH AND SHAPE MINIMUM STANDARD ANSI/NSPI5-2003



SHAPE : KIDNEY	SIZE : 22' X 37'-11"	HAND : LEFT	PANEL HEIGHT : 3'-6"	PANEL TYPE : 5" TOP
PERIMETER : 100'-6"	VOLUME : 28,259 US GAL.	SURFACE AREA : 666.650 SQ. FT.	SCALE : N.T.S	DRAWN BY : NM-BCC
DWG # : MN2238KD-19	DATE : 1/12/2017	REVISION # : 01	KIT REF : MN2238KD-19-L	A



DIVING / SLIDE EQUIPMENT DISCLAIMER:

THE BOTTOM CONFIGURATION SHOWN MEETS WITH THE CURRENT IPSC MINIMUM STANDARDS FOR POOLS APPROVED FOR THE USE WITH MANUFACTURED DIVING EQUIPMENT. ALL DIVING EQUIPMENT MUST BE INSTALLED AND LOCATED IN ACCORDANCE WITH THE DIVING / SLIDE MANUFACTURER'S RECOMMENDATIONS. IF DIVING EQUIPMENT IS INSTALLED: PLEASE FOLLOW ALL THE DIVING / SLIDE EQUIPMENT MANUFACTURER'S INSTALLATION, USE AND SAFETY INSTRUCTIONS.

MEETS DEPTH AND SHAPE MINIMUM STANDARD ANSI/NSPI5-2003

SHAPE : KIDNEY	SIZE : 22' X 37'-11"	HAND : LEFT	PANEL HEIGHT : 3'-6"	DRAWN BY : NM-BCC
DWG # : MN2238KD-19	DATE : 1/12/2017	REVISION # : 01	KIT REF : MN2238KD-19-L	B



THE BOTTOM CONFIGURATION SHOWN MEETS WITH THE CURRENT ISPSC MINIMUM STANDARDS FOR POOLS APPROVED FOR THE USE WITH MANUFACTURED DIVING EQUIPMENT. ALL DIVING EQUIPMENT MUST BE INSTALLED AND LOCATED IN ACCORDANCE WITH THE DIVING / SLIDE MANUFACTURER'S RECOMMENDATIONS. IF DIVING EQUIPMENT IS INSTALLED: PLEASE FOLLOW ALL THE DIVING / SLIDE EQUIPMENT MANUFACTURER'S INSTALLATION, USE AND SAFETY INSTRUCTIONS.

MEETS DEPTH AND SHAPE MINIMUM STANDARD ANSI/NSPI5-2003

The drawing consists of three views of a boat hull:

- Plan View (Top):** Shows the top-down shape of the hull. The overall length is 37'-11 1/4". The beam (width) is 8'. The hull is divided into sections with various radii (R11', R7', R24', R7', R11') and angles (8 3/8", 2'-10 7/8", 8 5/8", 3'-0 3/8", 1'-2"). The hull is divided into sections with various radii (R11', R7', R24', R7', R11') and angles (8 3/8", 2'-10 7/8", 8 5/8", 3'-0 3/8", 1'-2").
- Side View (Bottom):** Shows the side profile of the hull. The overall length is 37'-11 1/4". The beam is 8'. The hull is divided into sections with various radii (R11', R7', R24', R7', R11') and angles (8 3/8", 2'-10 7/8", 8 5/8", 3'-0 3/8", 1'-2"). The hull is divided into sections with various radii (R11', R7', R24', R7', R11') and angles (8 3/8", 2'-10 7/8", 8 5/8", 3'-0 3/8", 1'-2").
- End View (Left):** Shows the end profile of the hull. The overall length is 22'-14". The beam is 8'. The hull is divided into sections with various radii (R11', R7', R24', R7', R11') and angles (8 3/8", 2'-10 7/8", 8 5/8", 3'-0 3/8", 1'-2"). The hull is divided into sections with various radii (R11', R7', R24', R7', R11') and angles (8 3/8", 2'-10 7/8", 8 5/8", 3'-0 3/8", 1'-2").

SHAPE : KIDNEY	SIZE : 22' X 37'-11"	HAND : RIGHT	PANEL HEIGHT : 3'-6"	PANEL TYPE : 5" TOP
PERIMETER : 100'-6"	VOLUME : 28,259 US GAL.	SURFACE AREA : 666.650 SQ. FT.	SCALE : N.T.S	DRAWN BY : NM-BCC
DWG # : MN2238KD-19	DATE : 1/12/2017	REVISION # : 01	KIT REF : MN2238KD-19-R	A

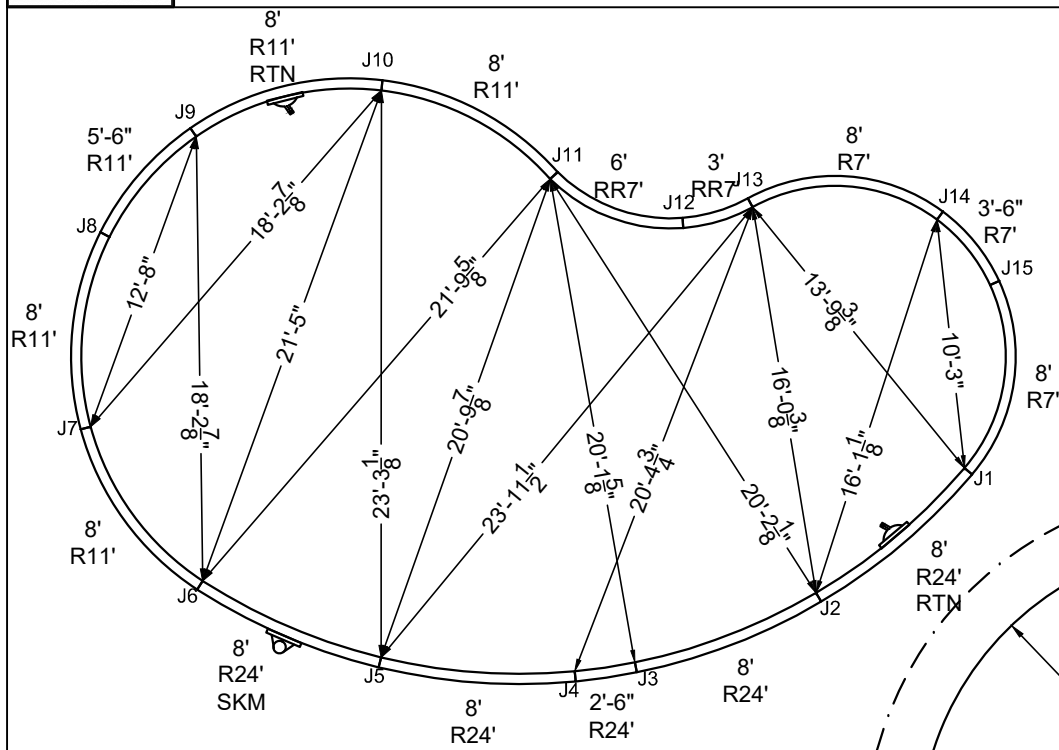
A

ALL DIMENSIONS ARE FINISHED

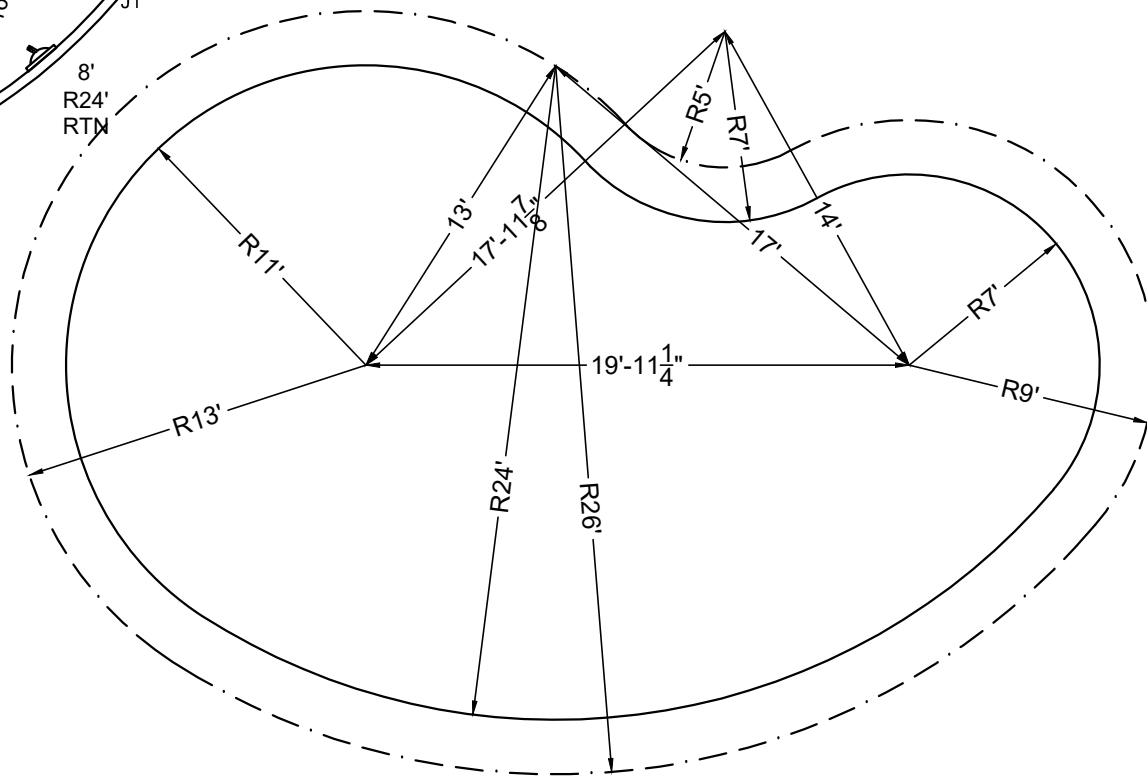
DIVING / SLIDE EQUIPMENT DISCLAIMER:

THE BOTTOM CONFIGURATION SHOWN MEETS WITH THE CURRENT ISPSC MINIMUM STANDARDS FOR POOLS APPROVED FOR THE USE WITH MANUFACTURED DIVING EQUIPMENT. ALL DIVING EQUIPMENT MUST BE INSTALLED AND LOCATED IN ACCORDANCE WITH THE DIVING / SLIDE MANUFACTURER'S RECOMMENDATIONS. IF DIVING EQUIPMENT IS INSTALLED: PLEASE FOLLOW ALL THE DIVING / SLIDE EQUIPMENT MANUFACTURER'S INSTALLATION, USE AND SAFETY INSTRUCTIONS.

MEETS DEPTH AND SHAPE MINIMUM STANDARD ANSI/NSPI5-2003



STAKE OUT



SHAPE: KIDNEY	SIZE: 22' X 37'-11"	HAND: RIGHT	PANEL HEIGHT: 3'-6"	DRAWN BY: NM-BCC
DWG #: MN2238KD-19	DATE: 1/12/2017	REVISION #: 01	KIT REF: MN2238KD-19-R	B