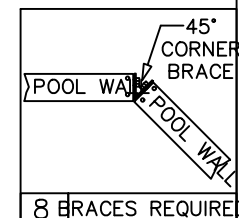




DOES NOT MEET DEPTH AND SHAPE MINIMUM STANDARD ANSI/NSPI5-2003

ALL DIMENSIONS ARE FINISHED



8 BRACES REQUIRE
------------------

SHAPE : GRECIAN	SIZE : 12'-1" X 20'-1"	HAND : NONE	PANEL HEIGHT : 3'-6"	PANEL TYPE : 5" TOP
PERIMETER : 56'	VOLUME : 5,553 US GAL.	SURFACE AREA : 217.279 SQ. FT.	SCALE : N.T.S	DRAWN BY : NM-BCC
DWG # : MN1220GR-19	DATE : 12/22/2016	REVISION # : 01	KIT REF : MN1220GR-19-X	<b>A</b>

A

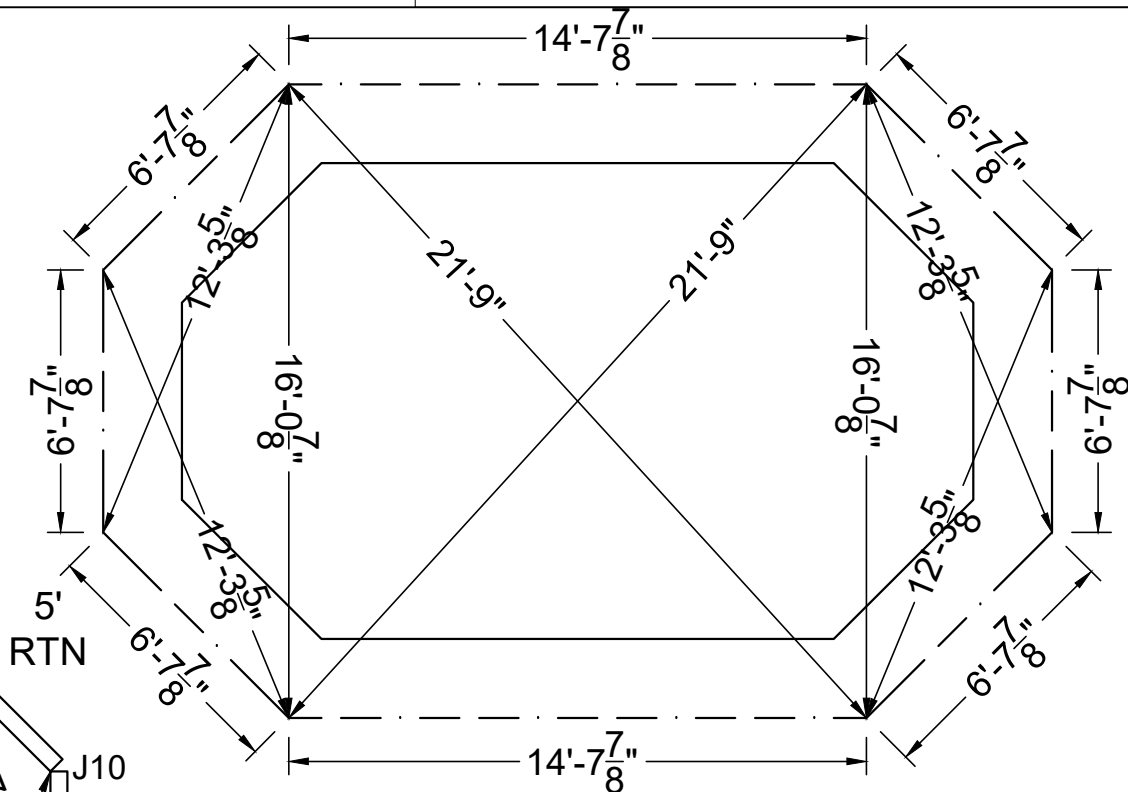
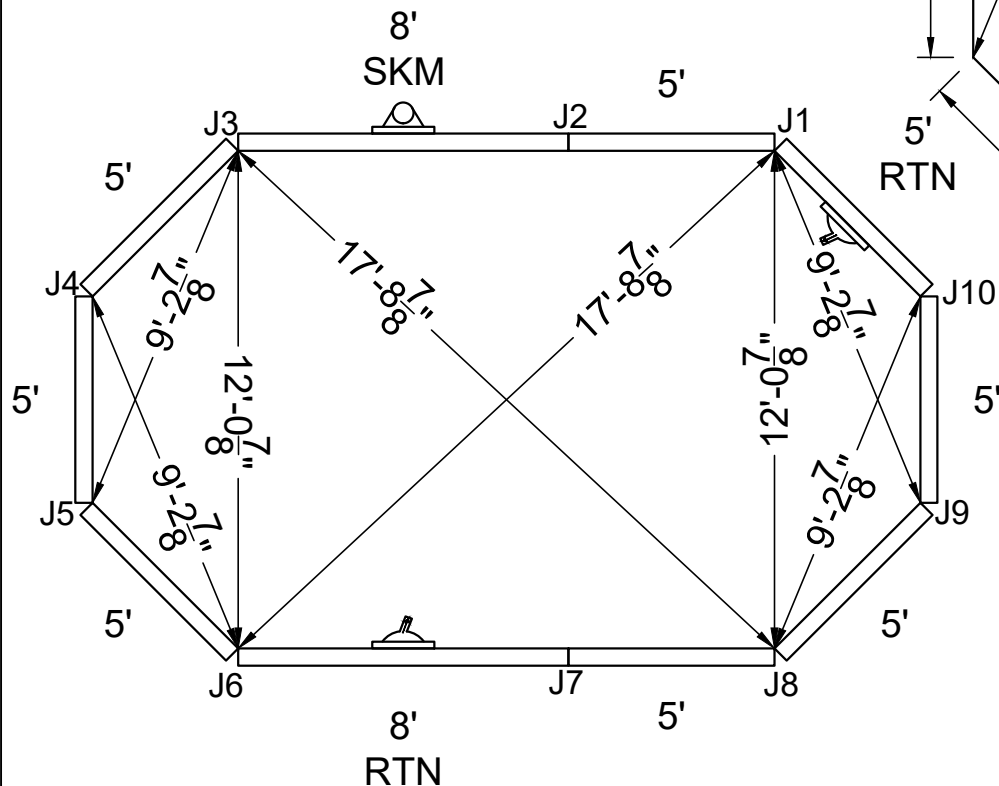
ALL DIMENSIONS ARE FINISHED



**NON-DIVING POOL**  
USE OF DIVING EQUIPMENT IS PROHIBITED

DOES NOT MEET DEPTH AND SHAPE MINIMUM STANDARD ANSI/NSPI5-2003

STEEL CHECK



STAKE OUT

SHAPE : GRECIAN	SIZE : 12'-1" X 20'-1"	HAND : NONE	PANEL HEIGHT : 3'-6"	DRAWN BY : NM-BCC
DWG # : MN1220GR-19	DATE : 12/22/2016	REVISION # : 01	KIT REF : MN1220GR-19-X	<b>B</b>



MEGNA  
POOLS

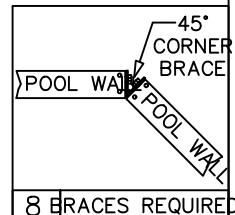
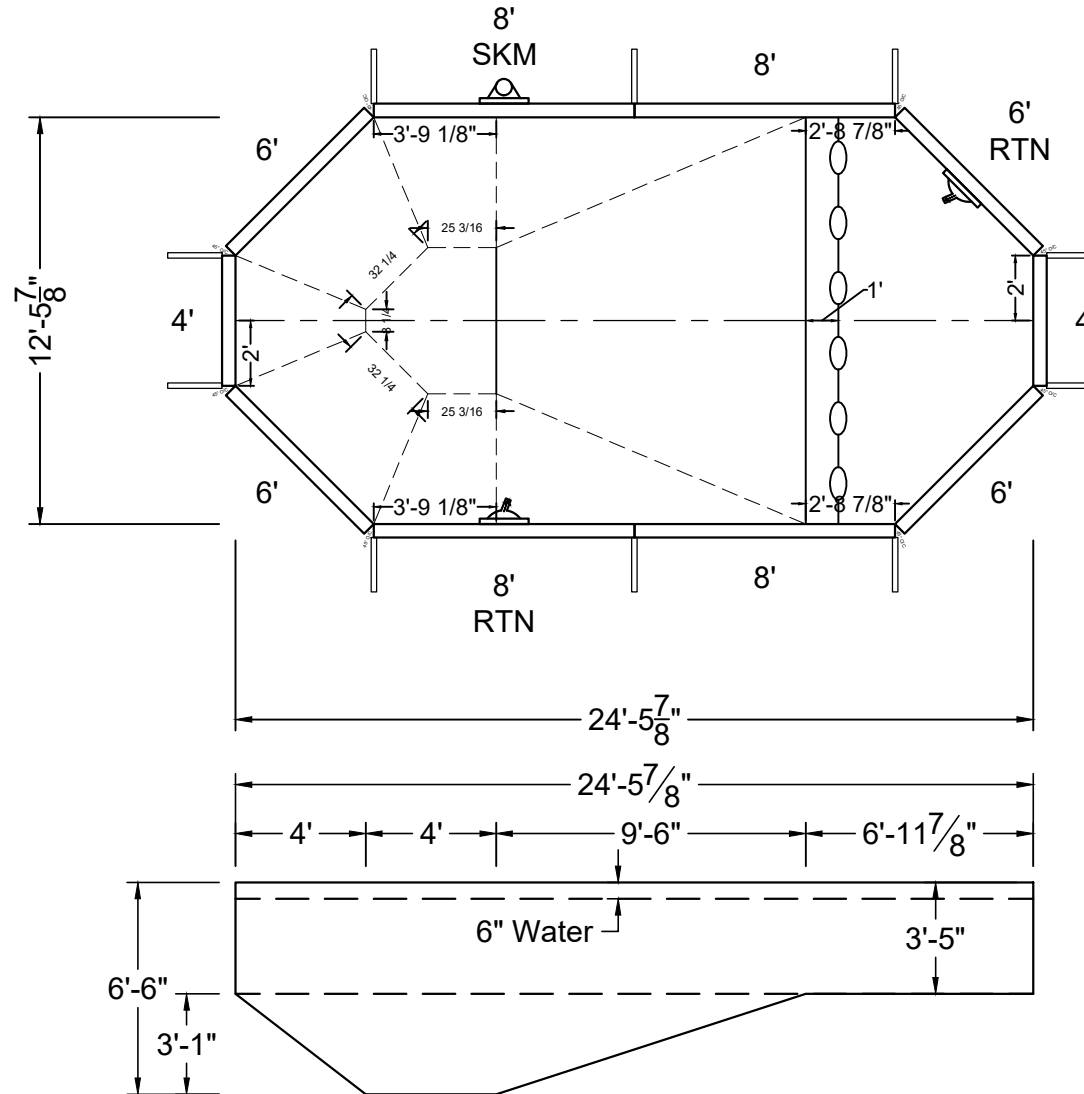
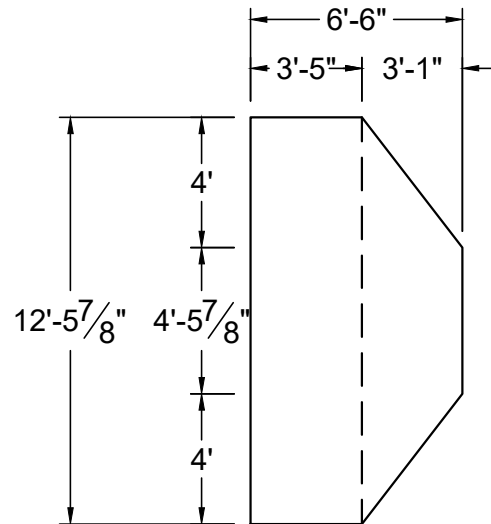
Megna Plastic Packaging Corp.



**NON-DIVING POOL**  
USE OF DIVING EQUIPMENT IS PROHIBITED

DOES NOT MEET DEPTH AND SHAPE MINIMUM STANDARD ANSI/NSPI5-2003

ALL DIMENSIONS ARE FINISHED



8 BRACES REQUIRED

SHAPE : GRECIAN	SIZE : 12'-6" X 24'-6"	HAND : NONE	PANEL HEIGHT : 3'-6"	PANEL TYPE : 5" TOP
PERIMETER : 64'	VOLUME : 9,131 US GAL.	SURFACE AREA : 269.706 SQ. FT.	SCALE : N.T.S	DRAWN BY : NM-BCC
DWG # : MN1224GR-19	DATE : 12/22/2016	REVISION # : 01	KIT REF : MN1224GR-19-X	<b>A</b>

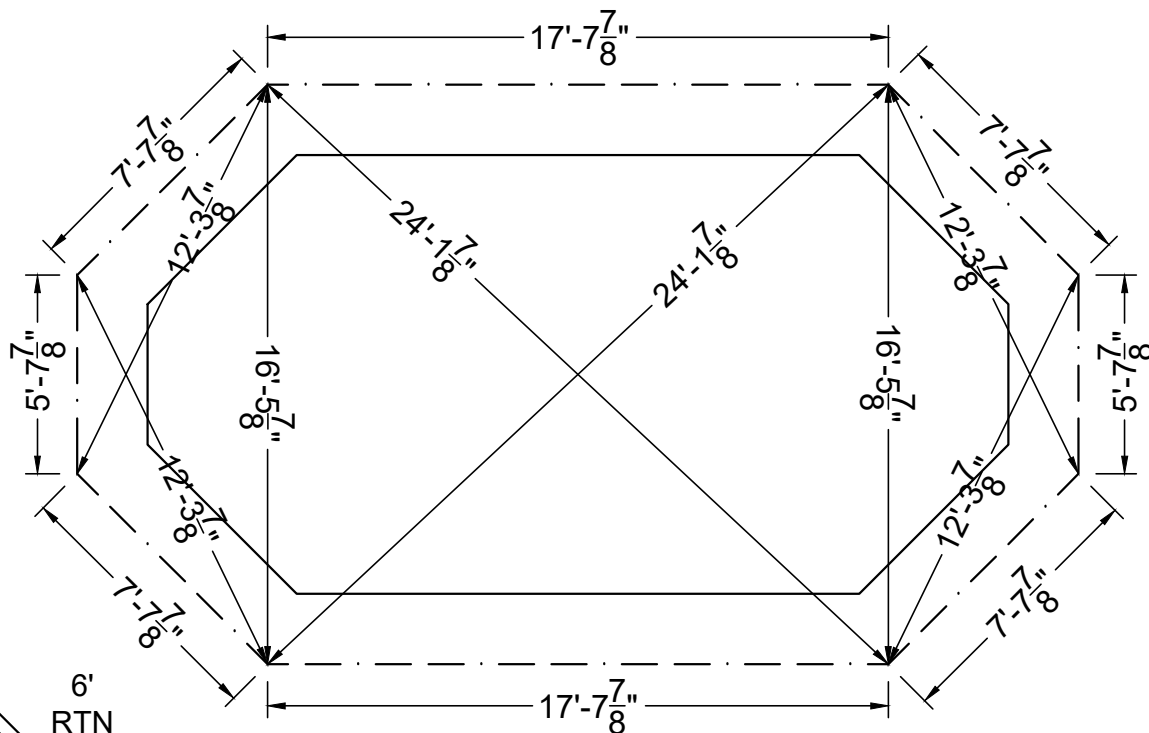
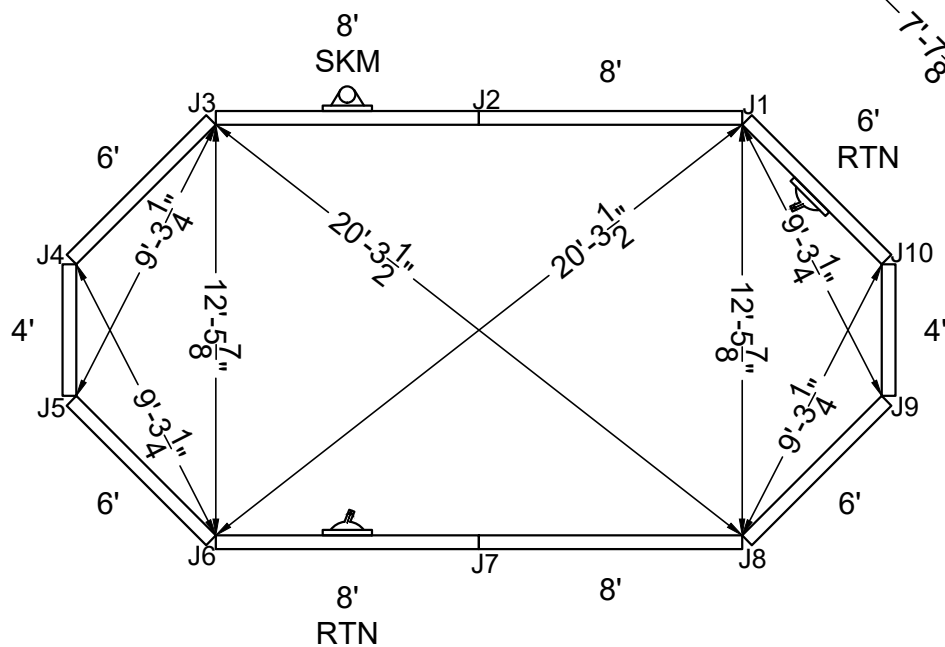
ALL DIMENSIONS ARE FINISHED



**NON-DIVING POOL**  
USE OF DIVING EQUIPMENT IS PROHIBITED

DOES NOT MEET DEPTH AND SHAPE MINIMUM STANDARD ANSI/NSPI5-2003

STEEL CHECK



STAKE OUT

SHAPE : GRECIAN

SIZE : 12'-6" X 24'-6"

HAND : NONE

PANEL HEIGHT : 3'-6"

DRAWN BY : NM-BCC

DWG # : MN1224GR-19

DATE : 12/22/2016

REVISION # : 01

KIT REF : MN1224GR-19-X

**B**



MEGNA  
POOLS

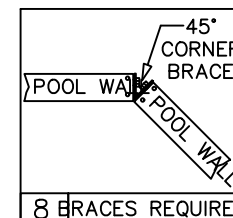
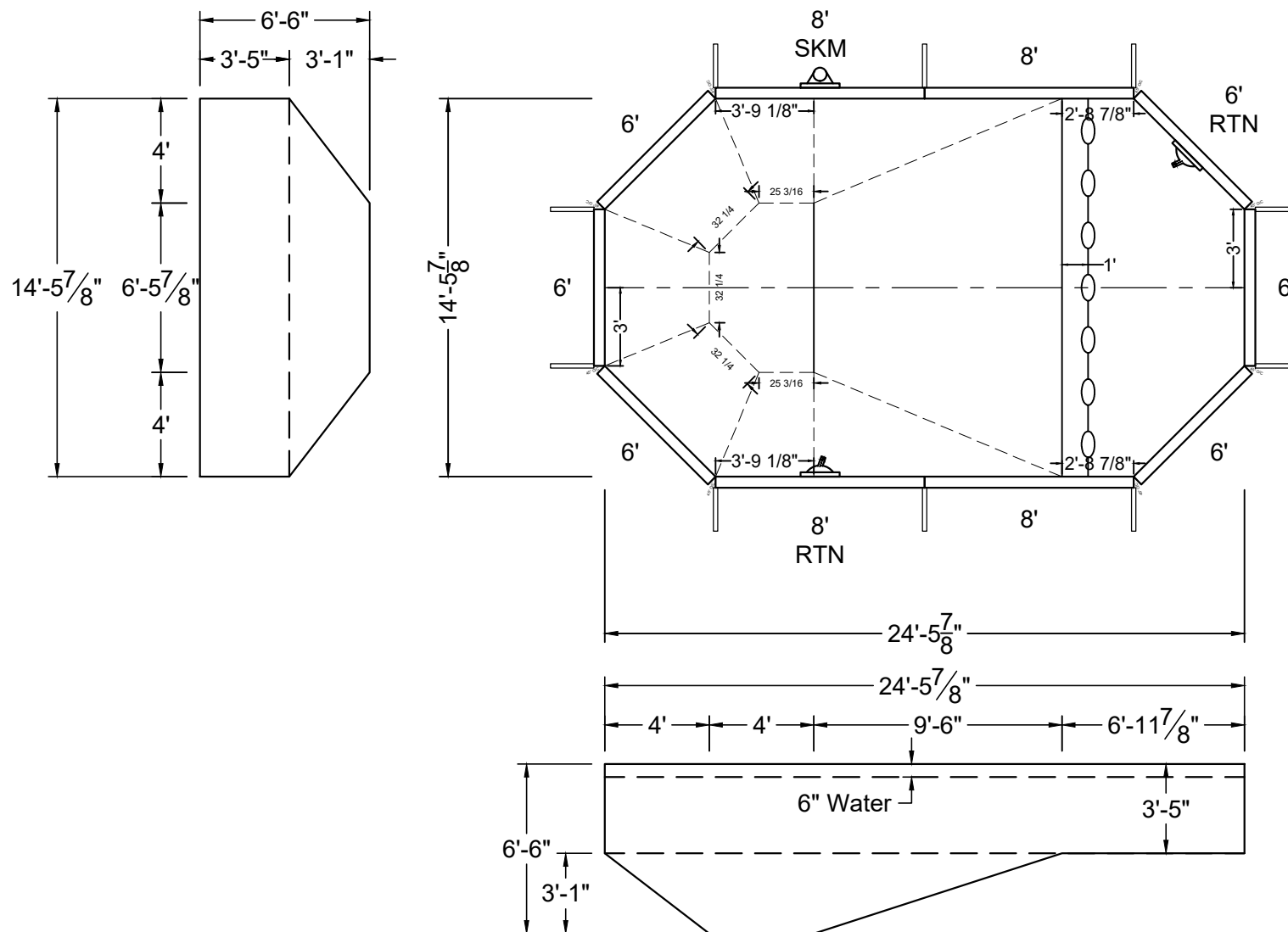
Megna Plastic Packaging Corp.



**NON-DIVING POOL**  
USE OF DIVING EQUIPMENT IS PROHIBITED

DOES NOT MEET DEPTH AND SHAPE MINIMUM STANDARD ANSI/NSPI5-2003

ALL DIMENSIONS ARE FINISHED



8 BRACES REQUIRED

SHAPE : GRECIAN	SIZE : 14'-6" X 24'-6"	HAND : NONE	PANEL HEIGHT : 3'-6"	PANEL TYPE : 5" TOP
PERIMETER : 68'	VOLUME : 10,879 US GAL.	SURFACE AREA : 318.676 SQ. FT.	SCALE : N.T.S	DRAWN BY : NM-BCC
DWG # : MN1424GR-19	DATE : 12/22/2016	REVISION # : 01	KIT REF : MN1424GR-19-X	<b>A</b>

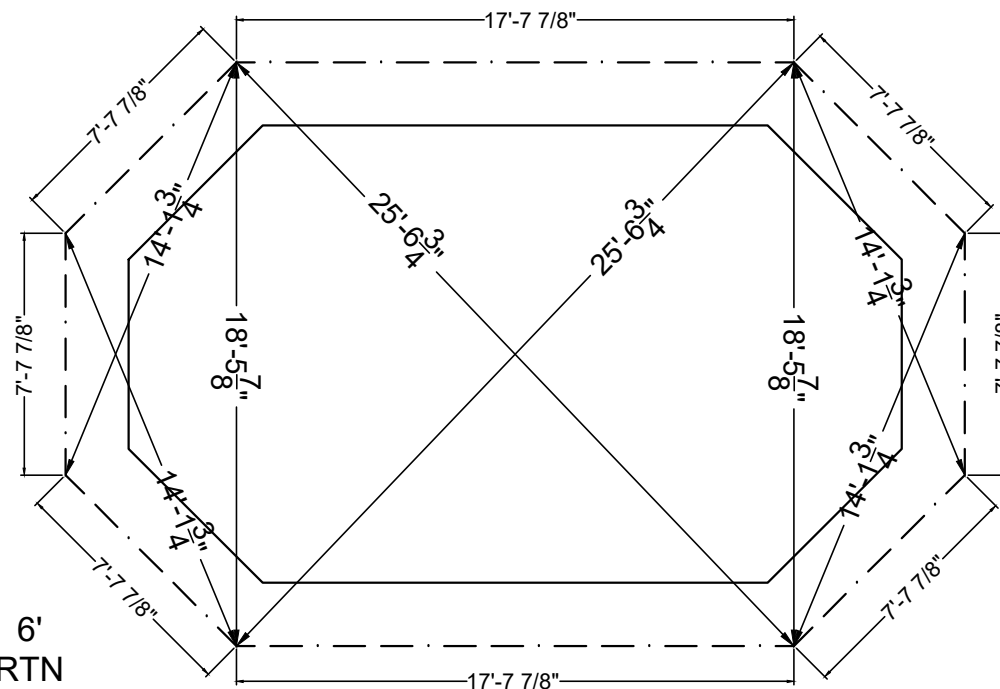
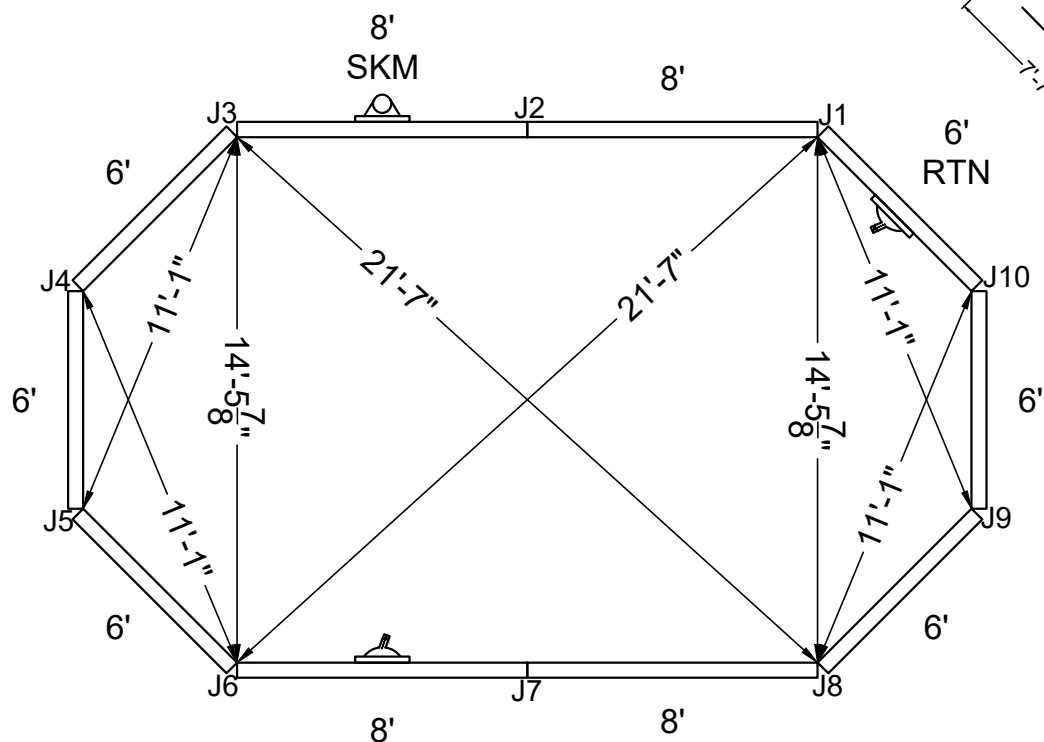


**NON-DIVING POOL**  
USE OF DIVING EQUIPMENT IS PROHIBITED

DOES NOT MEET DEPTH AND SHAPE MINIMUM STANDARD ANSI/NSPI5-2003

ALL DIMENSIONS ARE FINISHED

STEEL CHECK



STAKE OUT

SHAPE : GRECIAN	SIZE : 14'-6" X 24'-6"	HAND : NONE	PANEL HEIGHT : 3'-6"	DRAWN BY : NM-BCC
DWG # : MN1424GR-19	DATE : 12/22/2016	REVISION # : 01	KIT REF : MN1424GR-19-X	<b>B</b>



MEGNA  
POOLS

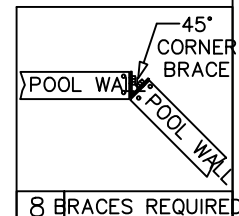
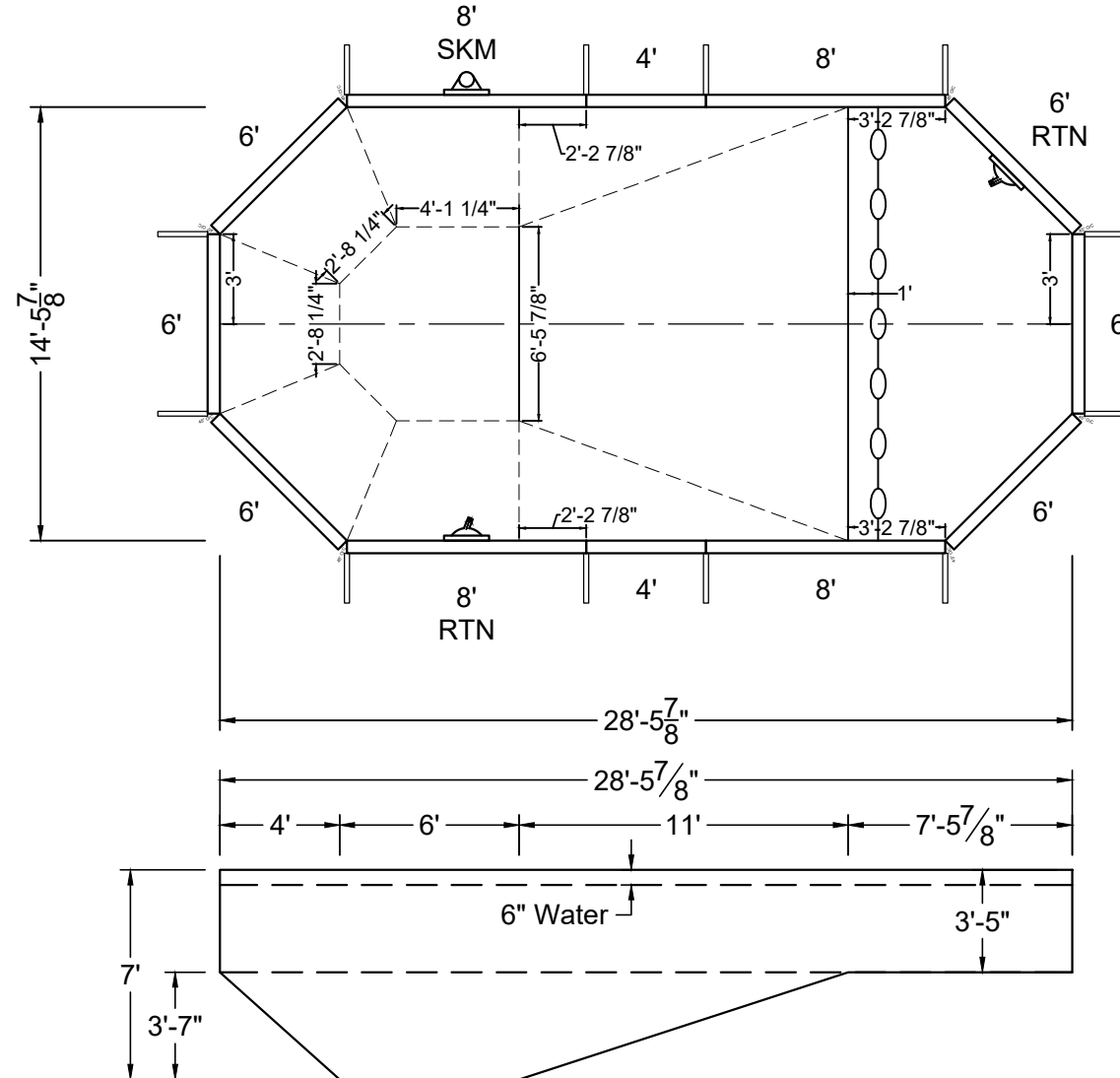
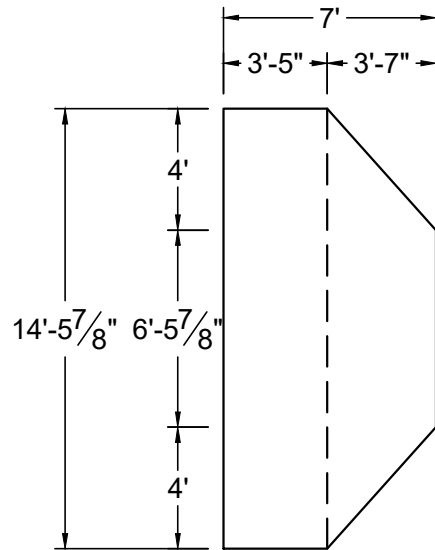
Megna Plastic Packaging Corp.



**NON-DIVING POOL**  
USE OF DIVING EQUIPMENT IS PROHIBITED

DOES NOT MEET DEPTH AND SHAPE MINIMUM STANDARD ANSI/NSPI5-2003

ALL DIMENSIONS ARE FINISHED



8 BRACES REQUIRED

SHAPE : GRECIAN	SIZE : 14'-6" X 28'-6"	HAND : NONE	PANEL HEIGHT : 3'-6"	PANEL TYPE : 5" TOP
PERIMETER : 76'	VOLUME : 13,603 US GAL.	SURFACE AREA : 376.617 SQ. FT.	SCALE : N.T.S	DRAWN BY : NM-BCC
DWG # : MN1428GR-19	DATE : 12/22/2016	REVISION # : 01	KIT REF : MN1428GR-19-X	<b>A</b>

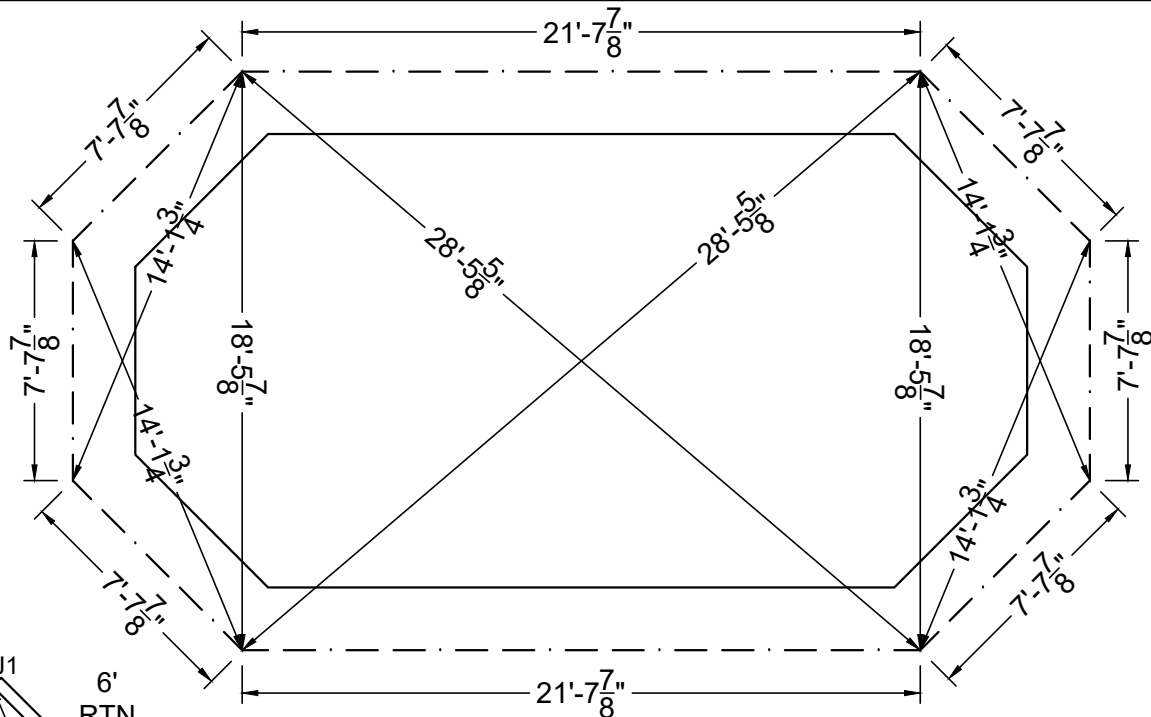
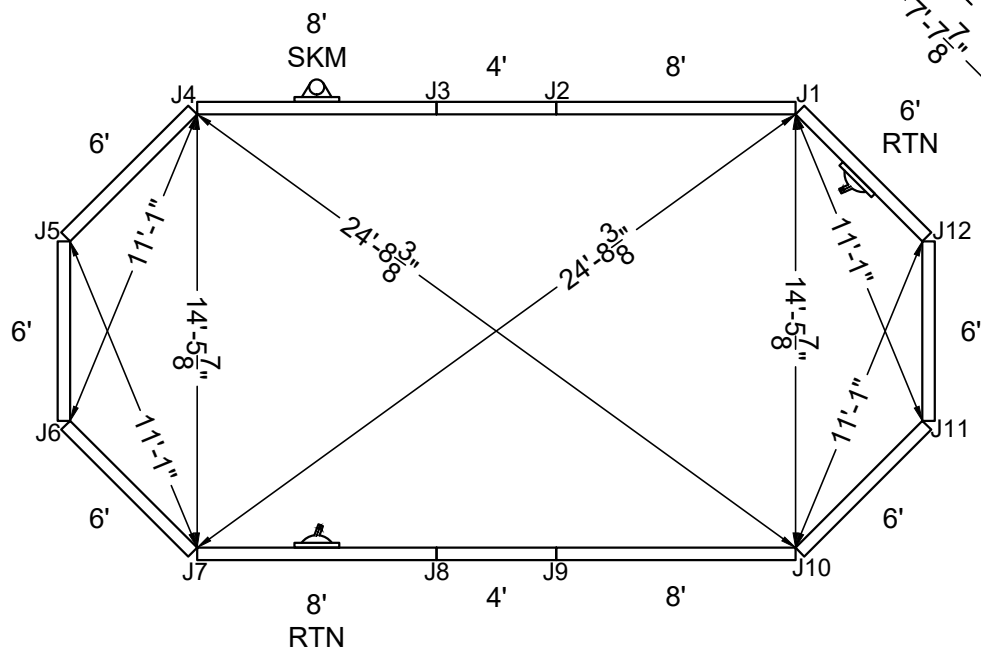
ALL DIMENSIONS ARE FINISHED



**NON-DIVING POOL**  
USE OF DIVING EQUIPMENT IS PROHIBITED

DOES NOT MEET DEPTH AND SHAPE MINIMUM STANDARD ANSI/NSPI5-2003

STEEL CHECK



STAKE OUT

SHAPE : GRECIAN  
DWG # : MN1428GR-19

SIZE : 14'-6" X 28'-6"  
DATE : 12/22/2016

HAND : NONE  
REVISION # : 01

PANEL HEIGHT : 3'-6"  
KIT REF : MN1428GR-19-X

DRAWN BY : NM-BCC

**B**





MEGNA  
POOLS

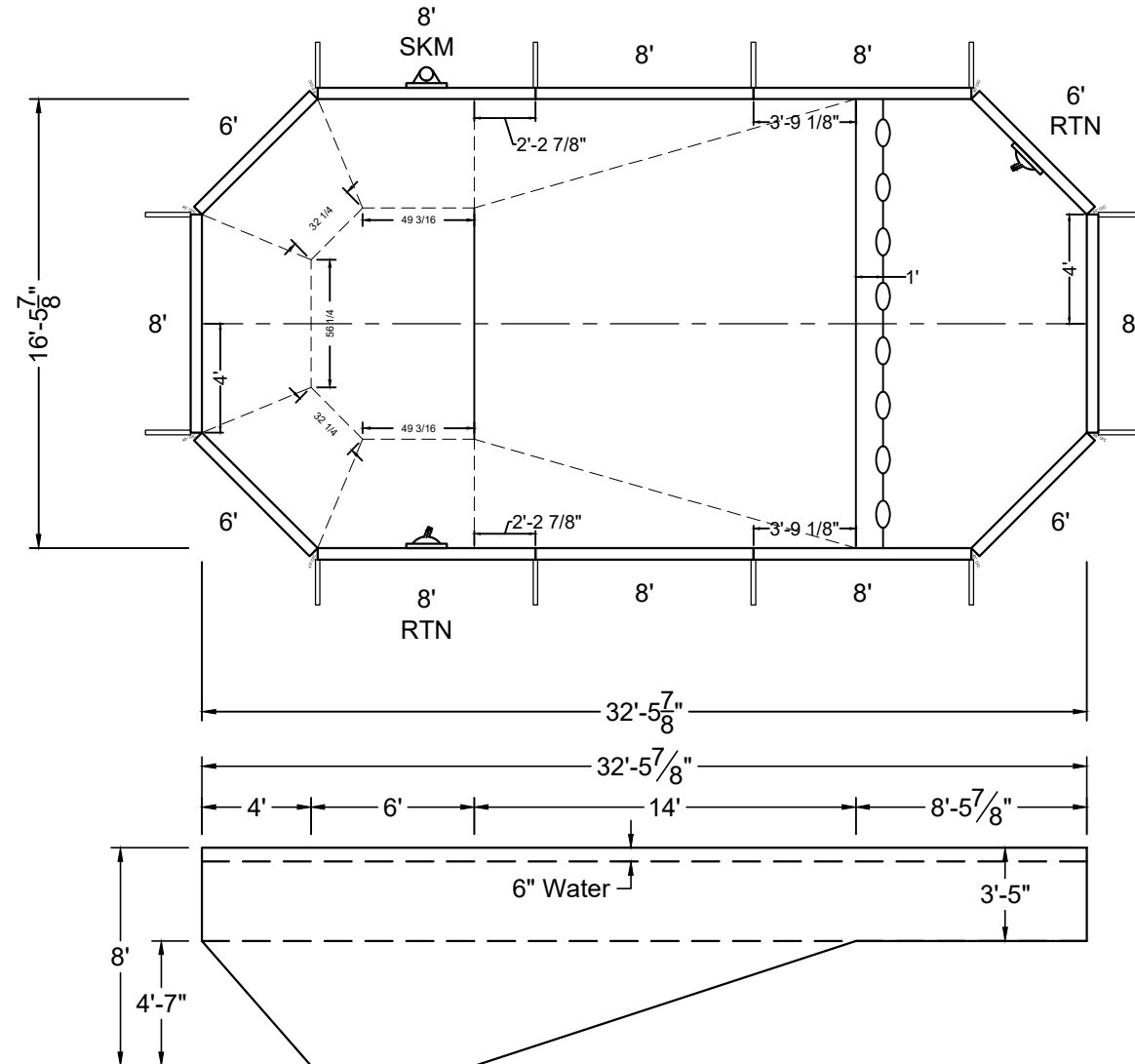
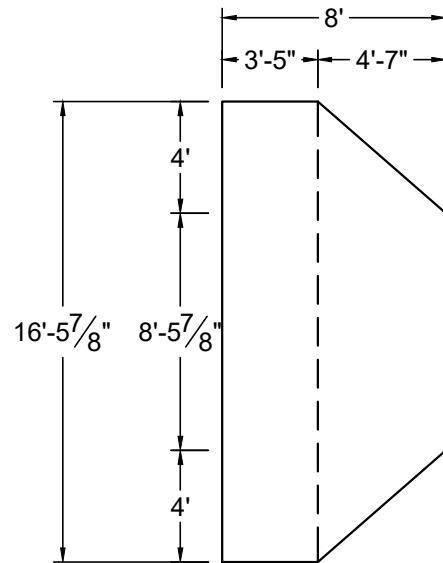
Megna Plastic Packaging Corp.

ALL DIMENSIONS ARE FINISHED

# DIVING / SLIDE EQUIPMENT DISCLAIMER:

THE BOTTOM CONFIGURATION SHOWN MEETS WITH THE CURRENT ISPSC MINIMUM STANDARDS FOR POOLS APPROVED FOR THE USE WITH MANUFACTURED DIVING EQUIPMENT. ALL DIVING EQUIPMENT MUST BE INSTALLED AND LOCATED IN ACCORDANCE WITH THE DIVING / SLIDE MANUFACTURER'S RECOMMENDATIONS. IF DIVING EQUIPMENT IS INSTALLED: PLEASE FOLLOW ALL THE DIVING / SLIDE EQUIPMENT MANUFACTURER'S INSTALLATION, USE AND SAFETY INSTRUCTIONS.

MEETS DEPTH AND SHAPE MINIMUM STANDARD ANSI/NSPI5-2003



SHAPE : GRECIAN	SIZE : 16'-6" X 32'-6"	HAND : NONE	PANEL HEIGHT : 3'-6"	PANEL TYPE : 5" TOP
PERIMETER : 88'	VOLUME : 19,491 US GAL.	SURFACE AREA : 499.529 SQ. FT.	SCALE : N.T.S	DRAWN BY : NM-BCC
DWG # : MN1632GR-19	DATE : 12/22/2016	REVISION # : 01	KIT REF : MN1632GR-19-X	<b>A</b>



**DIVING / SLIDE EQUIPMENT DISCLAIMER:**

THE BOTTOM CONFIGURATION SHOWN MEETS WITH THE CURRENT IPSC MINIMUM STANDARDS FOR POOLS APPROVED FOR THE USE WITH MANUFACTURED DIVING EQUIPMENT. ALL DIVING EQUIPMENT MUST BE INSTALLED AND LOCATED IN ACCORDANCE WITH THE DIVING / SLIDE MANUFACTURER'S RECOMMENDATIONS. IF DIVING EQUIPMENT IS INSTALLED: PLEASE FOLLOW ALL THE DIVING / SLIDE EQUIPMENT MANUFACTURER'S INSTALLATION, USE AND SAFETY INSTRUCTIONS.

MEETS DEPTH AND SHAPE MINIMUM STANDARD ANSI/NSPI5-2003

Technical drawing of a rectangular structure with dimensions in feet and inches. The drawing shows a central rectangle with a dashed outer boundary and a solid inner boundary. Dimensions are given in feet and inches, with fractions of an inch. The overall width is 25'-7 <sup>7</sup>/<sub>8</sub>" and the overall height is 20'-5 <sup>7</sup>/<sub>8</sub>". The inner rectangle has a width of 16'-0 <sup>1</sup>/<sub>8</sub>" and a height of 16'-0 <sup>1</sup>/<sub>8</sub>". The distance between the inner and outer boundaries is 7'-7 <sup>7</sup>/<sub>8</sub>" on all sides. The drawing is labeled '6' and '7' in the bottom left corner.

Technical drawing of a rectangular frame structure. The drawing shows a rectangle with vertices labeled J1 through J12. The top edge is labeled with dimensions 8' and 8'. The bottom edge is labeled with dimensions 8' and 8'. The left edge is labeled with dimensions 6' and 8'. The right edge is labeled with dimensions 6' and 8'. The drawing includes diagonal lines and labels for various dimensions and angles, such as 29'-13", 16'-5 7/8", 12'-11 1/2", and 12'-11 1/2". The drawing is labeled with 'SKM' at the top center and 'RTN' at the bottom center.

SHAPE : GRECIAN	SIZE : 16'-6" X 32'-6"	HAND : NONE	PANEL HEIGHT : 3'-6"	DRAWN BY : NM-BCC
DWG # : MN1632GR-19	DATE : 12/22/2016	REVISION # : 01	KIT REF : MN1632GR-19-X	<b>B</b>



THE BOTTOM CONFIGURATION SHOWN MEETS WITH THE CURRENT IPSC MINIMUM STANDARDS FOR POOLS APPROVED FOR THE USE WITH MANUFACTURED DIVING EQUIPMENT. ALL DIVING EQUIPMENT MUST BE INSTALLED AND LOCATED IN ACCORDANCE WITH THE DIVING / SLIDE MANUFACTURER'S RECOMMENDATIONS. IF DIVING EQUIPMENT IS INSTALLED: PLEASE FOLLOW ALL THE DIVING / SLIDE EQUIPMENT MANUFACTURER'S INSTALLATION, USE AND SAFETY INSTRUCTIONS.

MEETS DEPTH AND SHAPE MINIMUM STANDARD ANSI/NSPI5-2003

45° CORNER BRACE

POOL WALL

POOL WALL

8 BRACES REQUIRED

SHAPE : GRECIAN	SIZE : 16'-6" X 35'-6"	HAND : NONE	PANEL HEIGHT : 3'-6"	PANEL TYPE : 5" TOP
PERIMETER : 94'	VOLUME : 20,755 US GAL.	SURFACE AREA : 548.985 SQ. FT.	SCALE : N.T.S	DRAWN BY : NM-BCC
DWG # : MN1635GR-19	DATE : 12/22/2016	REVISION # : 01	KIT REF : MN1635GR-19-X	<b>A</b>

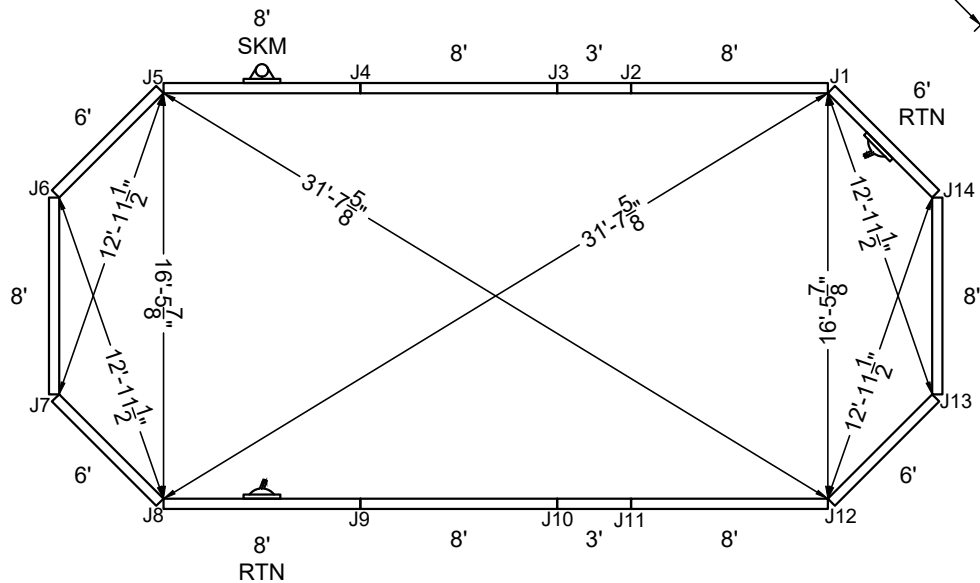
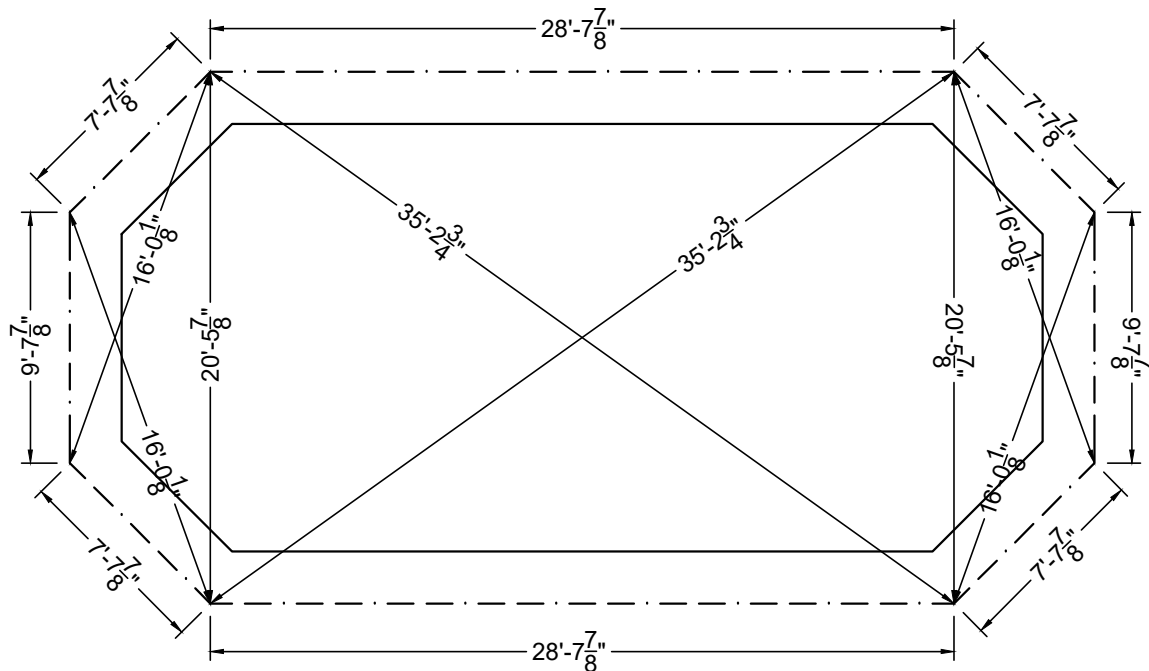
ALL DIMENSIONS ARE FINISHED

DIVING / SLIDE EQUIPMENT DISCLAIMER:

THE BOTTOM CONFIGURATION SHOWN MEETS WITH THE CURRENT ISPSC MINIMUM STANDARDS FOR POOLS APPROVED FOR THE USE WITH MANUFACTURED DIVING EQUIPMENT. ALL DIVING EQUIPMENT MUST BE INSTALLED AND LOCATED IN ACCORDANCE WITH THE DIVING / SLIDE MANUFACTURER'S RECOMMENDATIONS. IF DIVING EQUIPMENT IS INSTALLED: PLEASE FOLLOW ALL THE DIVING / SLIDE EQUIPMENT MANUFACTURER'S INSTALLATION, USE AND SAFETY INSTRUCTIONS.

MEETS DEPTH AND SHAPE MINIMUM STANDARD ANSI/NSPI5-2003

STEEL CHECK



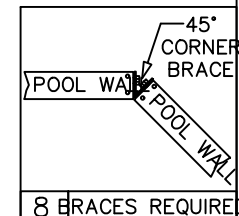
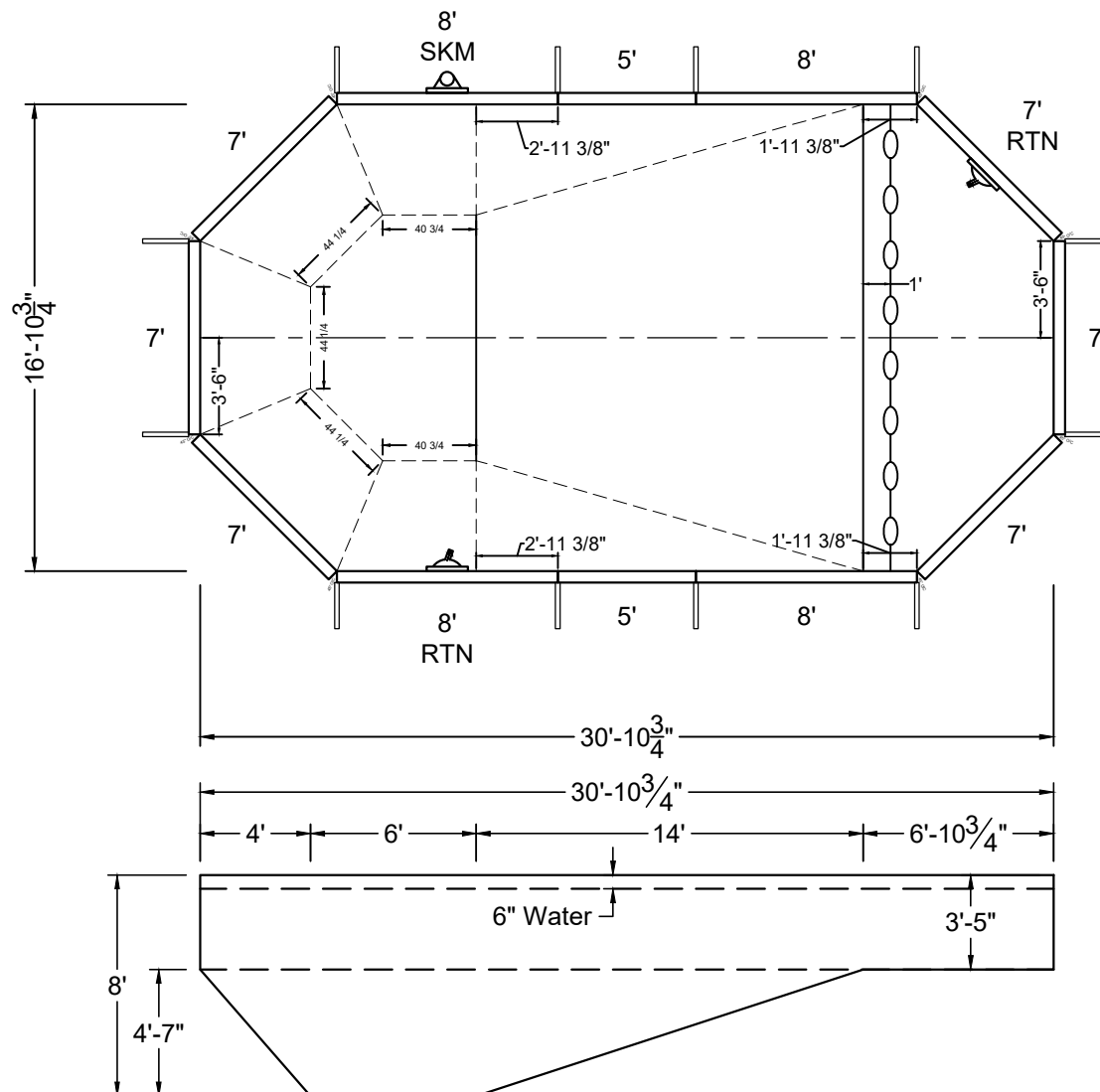
STAKE OUT

SHAPE : GRECIAN	SIZE : 16'-6" X 35'-6"	HAND : NONE	PANEL HEIGHT : 3'-6"	DRAWN BY : NM-BCC
DWG # : MN1635GR-19	DATE : 12/22/2016	REVISION # : 01	KIT REF : MN1635GR-19-X	<b>B</b>



THE BOTTOM CONFIGURATION SHOWN MEETS WITH THE CURRENT IPSC MINIMUM STANDARDS FOR POOLS APPROVED FOR THE USE WITH MANUFACTURED DIVING EQUIPMENT. ALL DIVING EQUIPMENT MUST BE INSTALLED AND LOCATED IN ACCORDANCE WITH THE DIVING / SLIDE MANUFACTURER'S RECOMMENDATIONS. IF DIVING EQUIPMENT IS INSTALLED: PLEASE FOLLOW ALL THE DIVING / SLIDE EQUIPMENT MANUFACTURER'S INSTALLATION, USE AND SAFETY INSTRUCTIONS.

MEETS DEPTH AND SHAPE MINIMUM STANDARD ANSI/NSPI5-2003



SHAPE : GRECIAN	SIZE : 16'-11" X 30'-11"	HAND : NONE	PANEL HEIGHT : 3'-6"	PANEL TYPE : 5" TOP
PERIMETER : 84'	VOLUME : 18,966 US GAL.	SURFACE AREA : 473.186 SQ. FT.	SCALE : N.T.S	DRAWN BY : NM-BCC
DWG # : MN1731GR-19	DATE : 12/22/2016	REVISION # : 01	KIT REF : MN1731GR-19-X	<b>A</b>



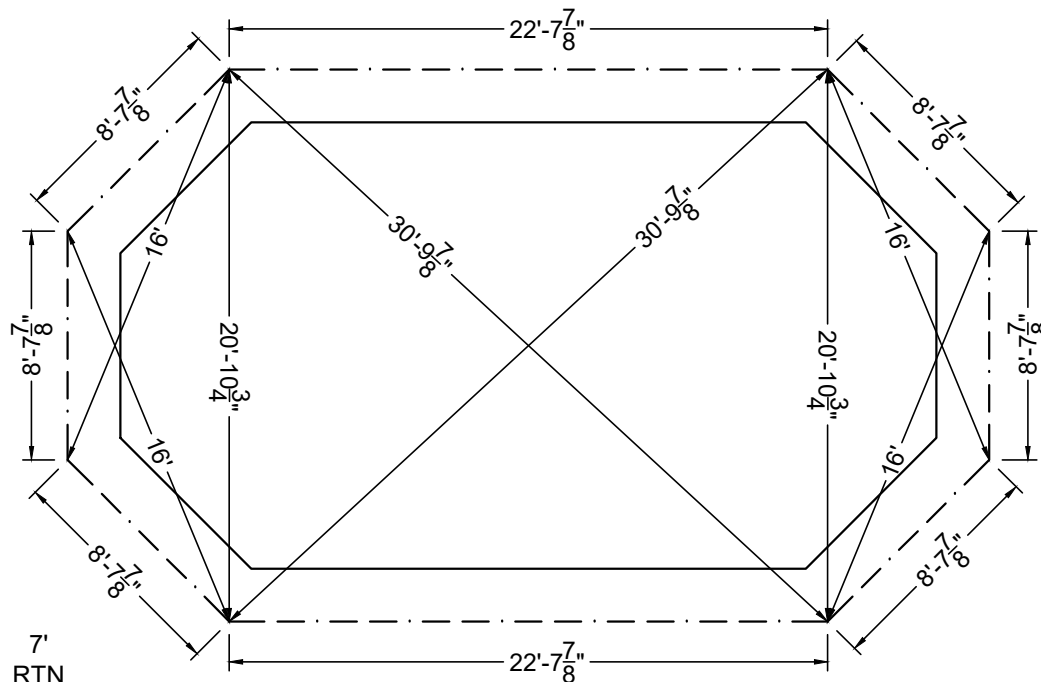
ALL DIMENSIONS ARE FINISHED

**DIVING / SLIDE EQUIPMENT DISCLAIMER:**

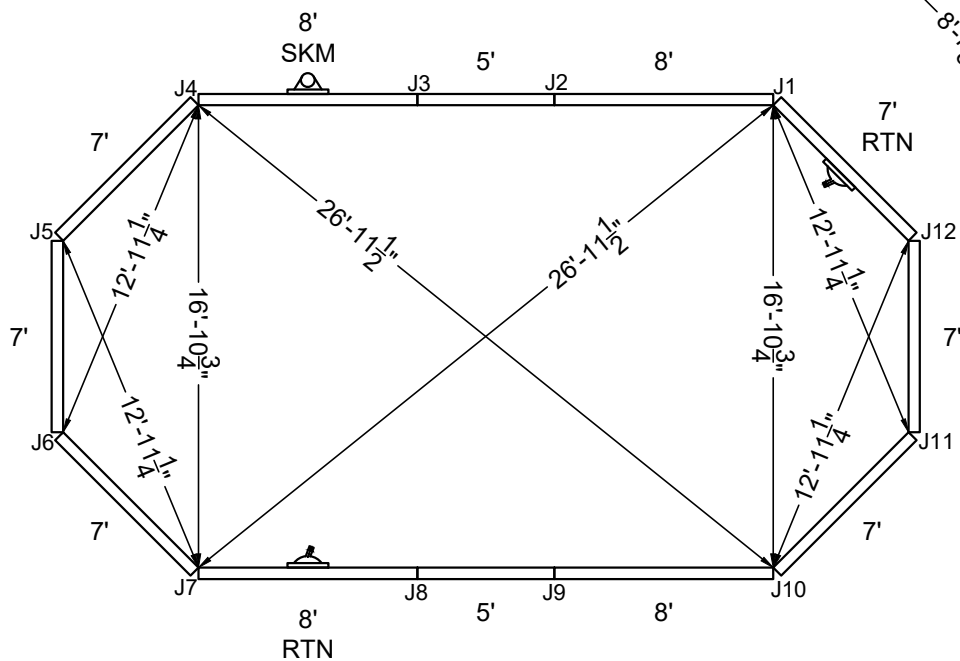
THE BOTTOM CONFIGURATION SHOWN MEETS WITH THE CURRENT IPSC MINIMUM STANDARDS FOR POOLS APPROVED FOR THE USE WITH MANUFACTURED DIVING EQUIPMENT. ALL DIVING EQUIPMENT MUST BE INSTALLED AND LOCATED IN ACCORDANCE WITH THE DIVING / SLIDE MANUFACTURER'S RECOMMENDATIONS. IF DIVING EQUIPMENT IS INSTALLED: PLEASE FOLLOW ALL THE DIVING / SLIDE EQUIPMENT MANUFACTURER'S INSTALLATION, USE AND SAFETY INSTRUCTIONS.

MEETS DEPTH AND SHAPE MINIMUM STANDARD ANSI/NSPI5-2003

STEEL CHECK



## STAKE OUT



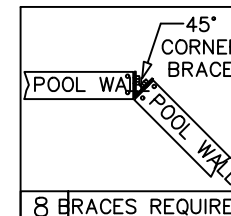
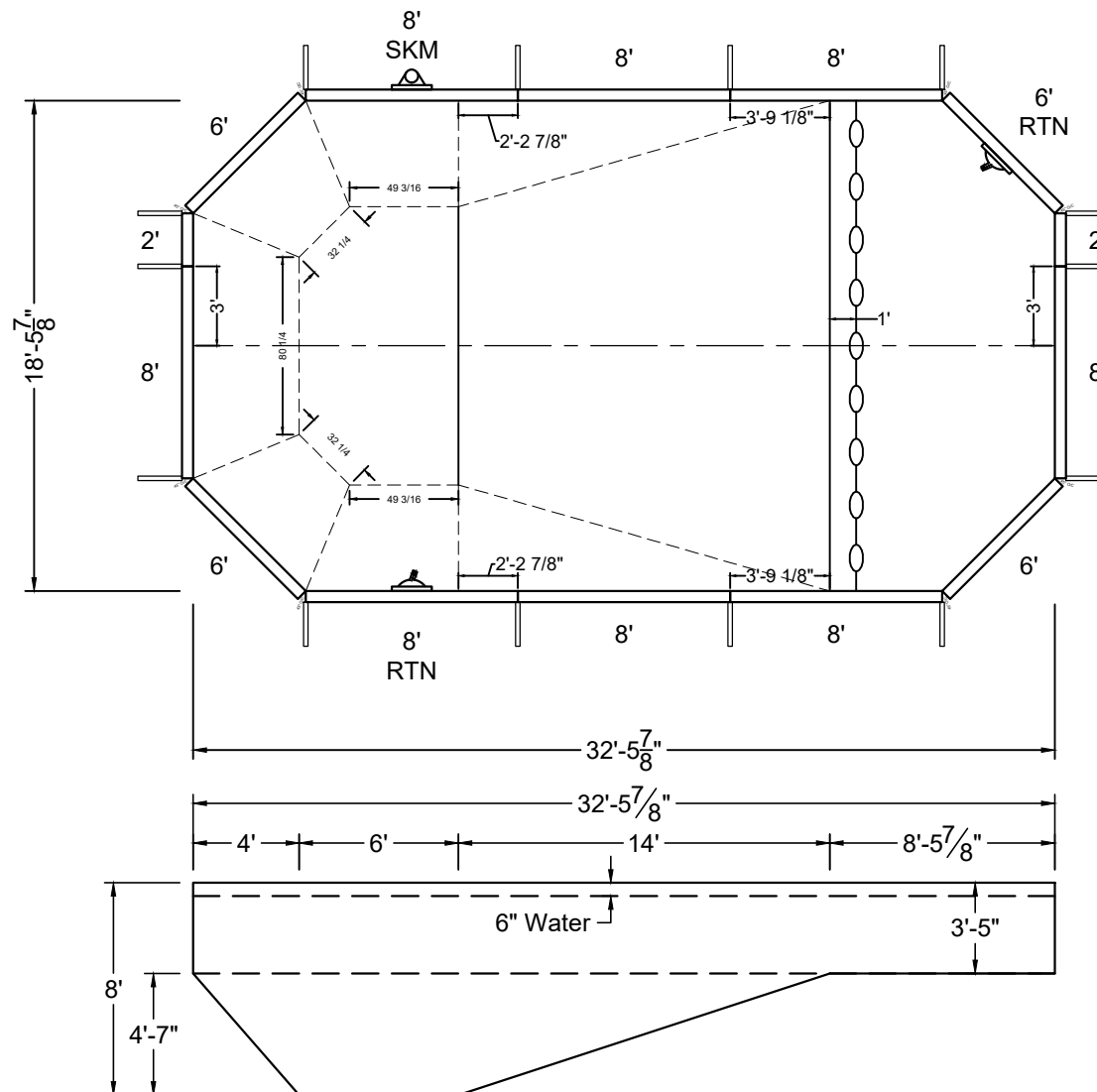
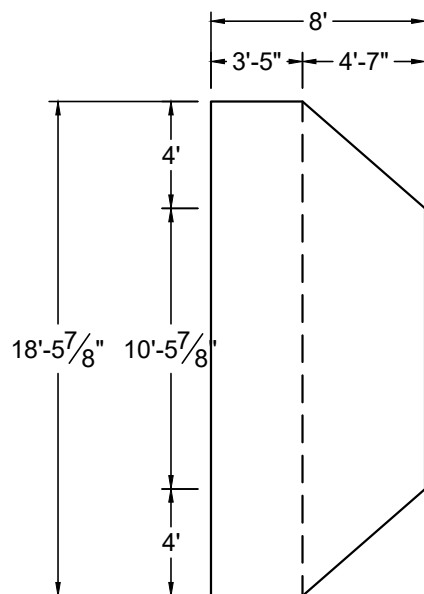
SHAPE : GRECIAN	SIZE : 16'-11" X 30'-11"	HAND : NONE	PANEL HEIGHT : 3'-6"	DRAWN BY : NM-BCC
DWG # : MN1731GR-19	DATE : 12/22/2016	REVISION # : 01	KIT REF : MN1731GR-19-X	<b>B</b>

ALL DIMENSIONS ARE FINISHED

DIVING / SLIDE EQUIPMENT DISCLAIMER:

THE BOTTOM CONFIGURATION SHOWN MEETS WITH THE CURRENT ISPSC MINIMUM STANDARDS FOR POOLS APPROVED FOR THE USE WITH MANUFACTURED DIVING EQUIPMENT. ALL DIVING EQUIPMENT MUST BE INSTALLED AND LOCATED IN ACCORDANCE WITH THE DIVING / SLIDE MANUFACTURER'S RECOMMENDATIONS. IF DIVING EQUIPMENT IS INSTALLED: PLEASE FOLLOW ALL THE DIVING / SLIDE EQUIPMENT MANUFACTURER'S INSTALLATION, USE AND SAFETY INSTRUCTIONS.

MEETS DEPTH AND SHAPE MINIMUM STANDARD ANSI/NSPI5-2003



8 BRACES REQUIRED

SHAPE : GRECIAN	SIZE : 18'-6" X 32'-6"	HAND : NONE	PANEL HEIGHT : 3'-6"	PANEL TYPE : 5" TOP
PERIMETER : 92'	VOLUME : 22,180 US GAL.	SURFACE AREA : 564.500 SQ. FT.	SCALE : N.T.S	DRAWN BY : NM-BCC
DWG # : MN1832GR-19	DATE : 12/22/2016	REVISION # : 01	KIT REF : MN1832GR-19-X	<b>A</b>



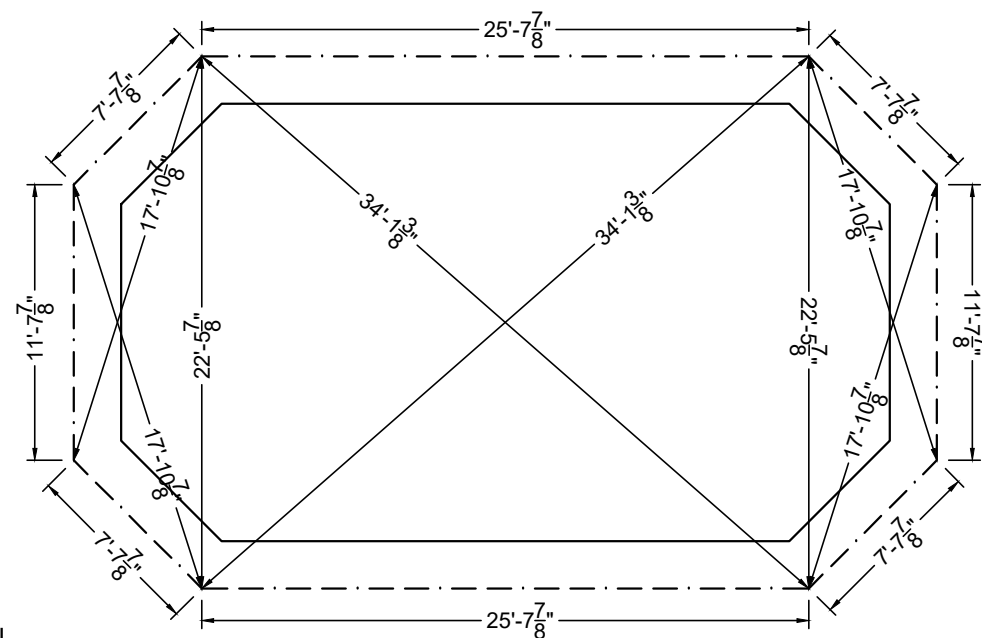
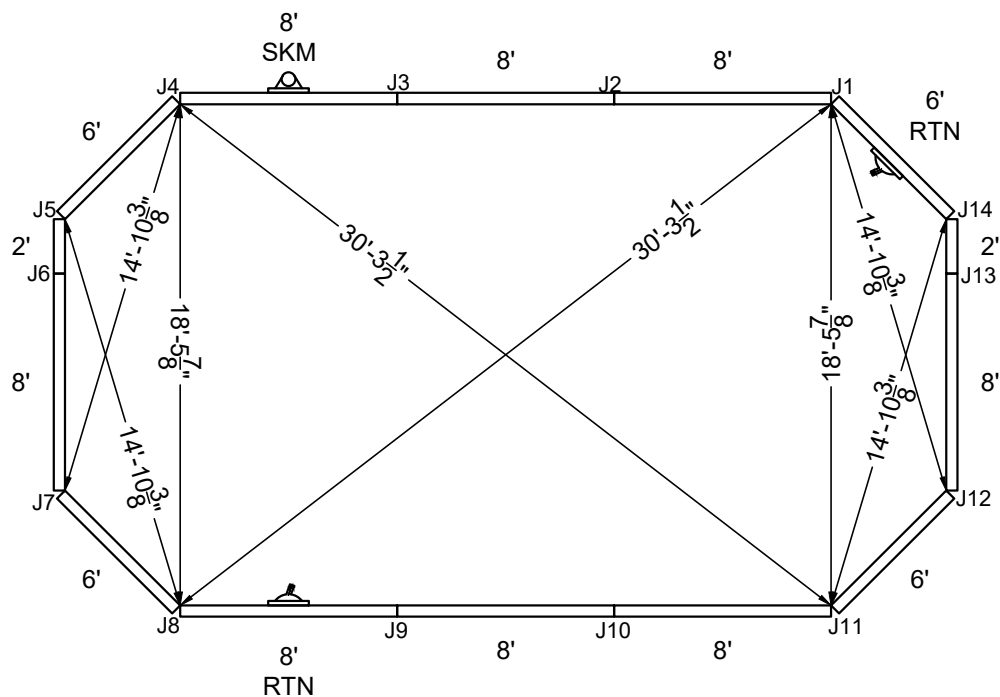
ALL DIMENSIONS ARE FINISHED

**DIVING / SLIDE EQUIPMENT DISCLAIMER:**

THE BOTTOM CONFIGURATION SHOWN MEETS WITH THE CURRENT IPSC MINIMUM STANDARDS FOR POOLS APPROVED FOR THE USE WITH MANUFACTURED DIVING EQUIPMENT. ALL DIVING EQUIPMENT MUST BE INSTALLED AND LOCATED IN ACCORDANCE WITH THE DIVING / SLIDE MANUFACTURER'S RECOMMENDATIONS. IF DIVING EQUIPMENT IS INSTALLED: PLEASE FOLLOW ALL THE DIVING / SLIDE EQUIPMENT MANUFACTURER'S INSTALLATION, USE AND SAFETY INSTRUCTIONS.

MEETS DEPTH AND SHAPE MINIMUM STANDARD ANSI/NSPI5-2003

## STEEL CHECK



## STAKE OUT

SHAPE : GRECIAN	SIZE : 18'-6" X 32'-6"	HAND : NONE	PANEL HEIGHT : 3'-6"	DRAWN BY : NM-BCC
DWG # : MN1832GR-19	DATE : 12/22/2016	REVISION # : 01	KIT REF : MN1832GR-19-X	<b>B</b>





A

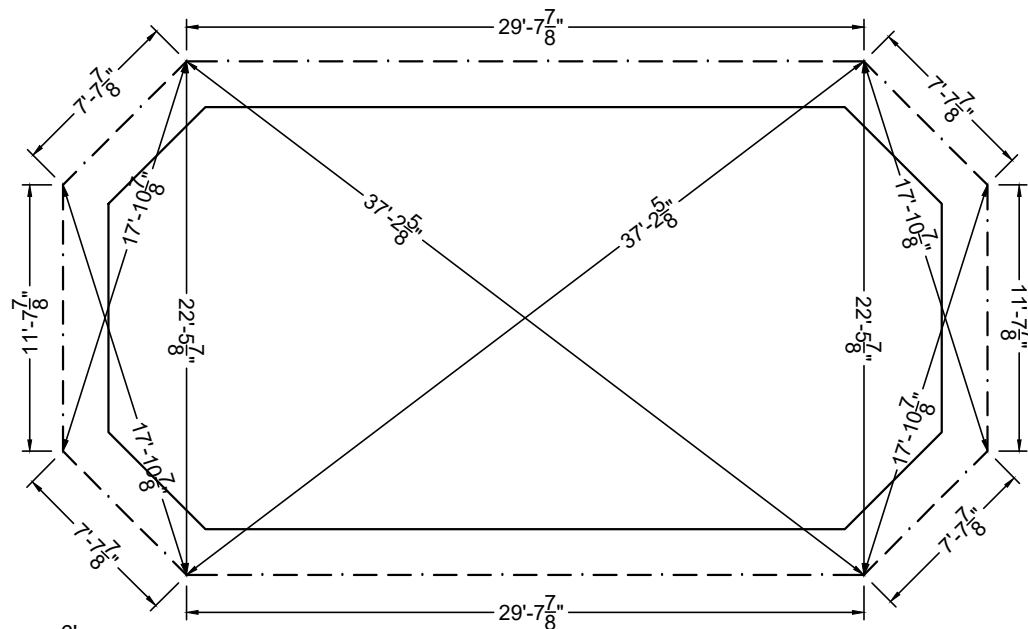
ALL DIMENSIONS ARE FINISHED

DIVING / SLIDE EQUIPMENT DISCLAIMER:

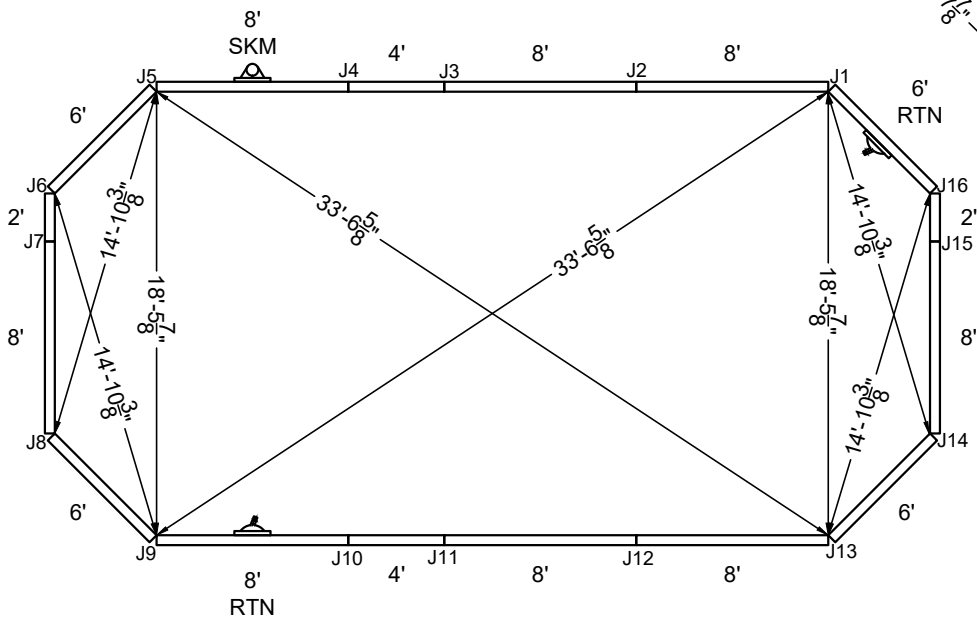
THE BOTTOM CONFIGURATION SHOWN MEETS WITH THE CURRENT ISPC MINIMUM STANDARDS FOR POOLS APPROVED FOR THE USE WITH MANUFACTURED DIVING EQUIPMENT. ALL DIVING EQUIPMENT MUST BE INSTALLED AND LOCATED IN ACCORDANCE WITH THE DIVING / SLIDE MANUFACTURER'S RECOMMENDATIONS. IF DIVING EQUIPMENT IS INSTALLED: PLEASE FOLLOW ALL THE DIVING / SLIDE EQUIPMENT MANUFACTURER'S INSTALLATION, USE AND SAFETY INSTRUCTIONS.

MEETS DEPTH AND SHAPE MINIMUM STANDARD ANSI/NSPI-2003

STEEL CHECK



STAKE OUT



SHAPE : GRECIAN	SIZE : 18'-6" X 36'-6"	HAND : NONE	PANEL HEIGHT : 3'-6"	DRAWN BY : NM-BCC
DWG # : MN1836GR-19	DATE : 12/22/2016	REVISION # : 01	KIT REF : MN1836GR-19-X	<b>B</b>



MEGNA  
POOLS

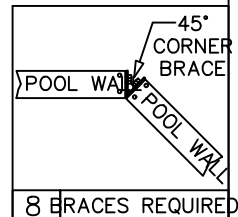
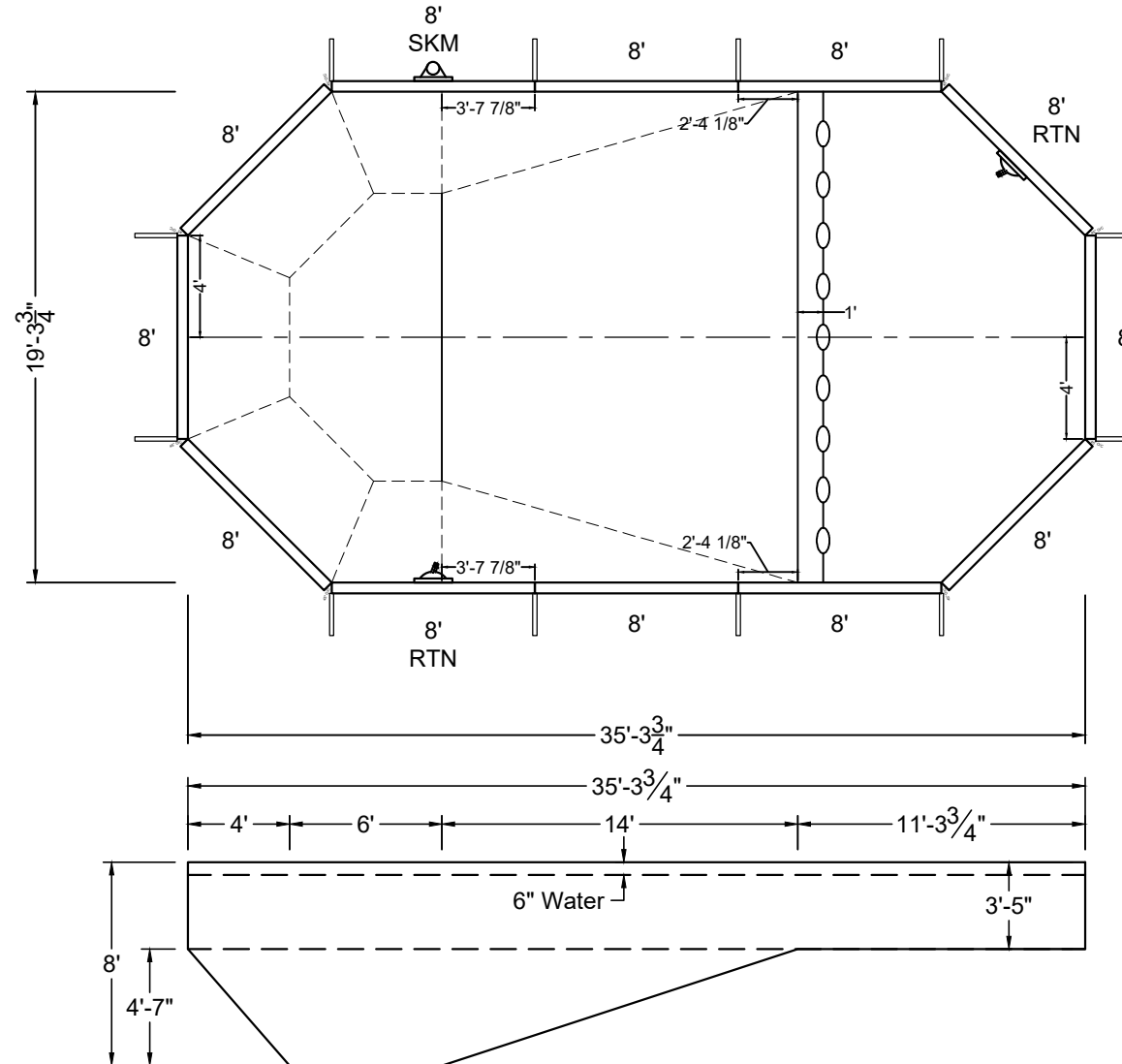
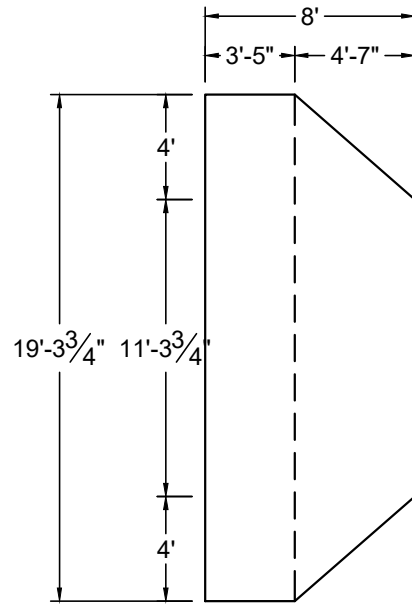
Megna Plastic Packaging Corp.

ALL DIMENSIONS ARE FINISHED

# DIVING / SLIDE EQUIPMENT DISCLAIMER:

THE BOTTOM CONFIGURATION SHOWN MEETS WITH THE CURRENT ISPSC MINIMUM STANDARDS FOR POOLS APPROVED FOR THE USE WITH MANUFACTURED DIVING EQUIPMENT. ALL DIVING EQUIPMENT MUST BE INSTALLED AND LOCATED IN ACCORDANCE WITH THE DIVING / SLIDE MANUFACTURER'S RECOMMENDATIONS. IF DIVING EQUIPMENT IS INSTALLED: PLEASE FOLLOW ALL THE DIVING / SLIDE EQUIPMENT MANUFACTURER'S INSTALLATION, USE AND SAFETY INSTRUCTIONS.

MEETS DEPTH AND SHAPE MINIMUM STANDARD ANSI/NSPI5-2003



SHAPE : GRECIAN	SIZE : 19'-4" X 35'-4"	HAND : NONE	PANEL HEIGHT : 3'-6"	PANEL TYPE : 5" TOP
PERIMETER : 96'	VOLUME : 23,825 US GAL.	SURFACE AREA : 618.039 SQ. FT.	SCALE : N.T.S	DRAWN BY : NM-BCC
DWG # : MN1935GR-19	DATE : 12/22/2016	REVISION # : 01	KIT REF : MN1935GR-19-X	<b>A</b>



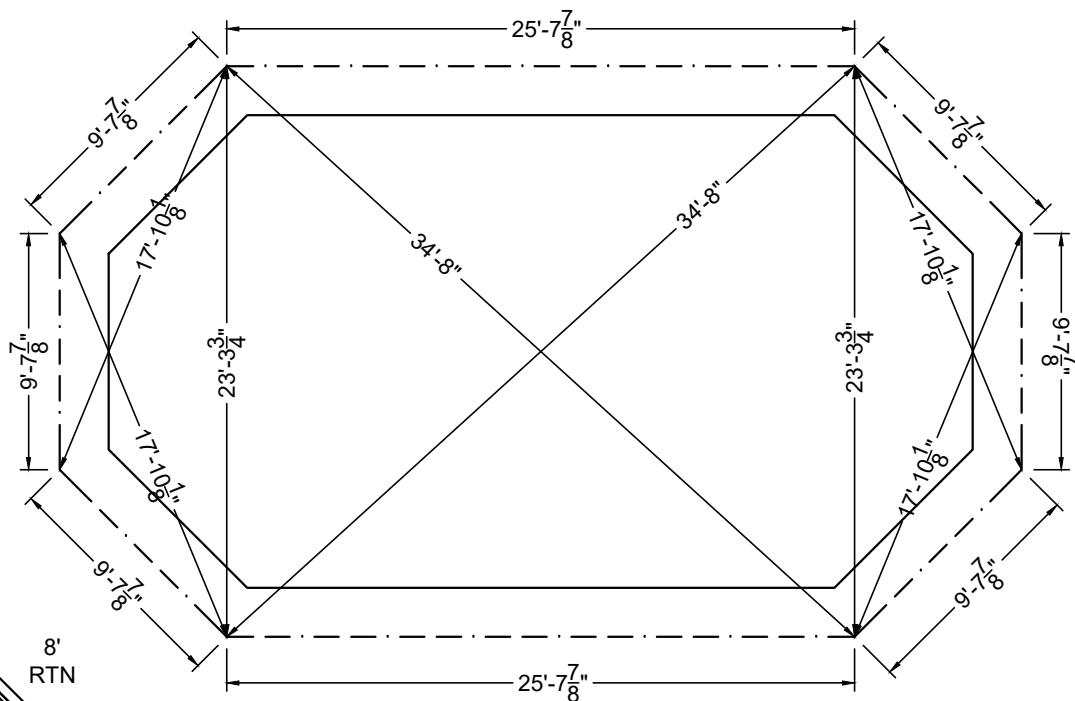
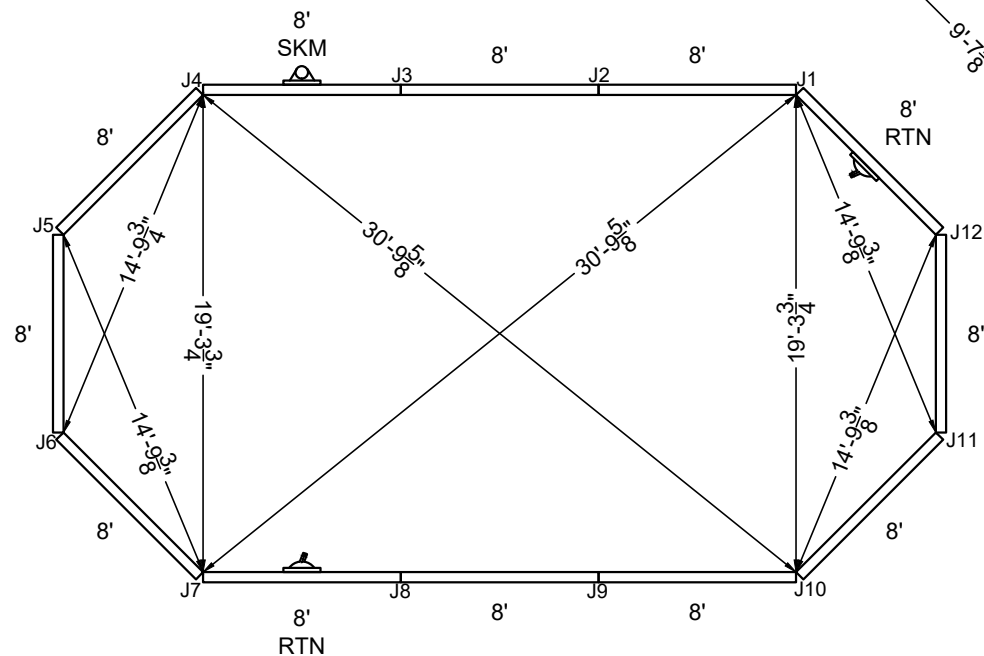
ALL DIMENSIONS ARE FINISHED

**DIVING / SLIDE EQUIPMENT DISCLAIMER:**

THE BOTTOM CONFIGURATION SHOWN MEETS WITH THE CURRENT IPSC MINIMUM STANDARDS FOR POOLS APPROVED FOR THE USE WITH MANUFACTURED DIVING EQUIPMENT. ALL DIVING EQUIPMENT MUST BE INSTALLED AND LOCATED IN ACCORDANCE WITH THE DIVING / SLIDE MANUFACTURER'S RECOMMENDATIONS. IF DIVING EQUIPMENT IS INSTALLED: PLEASE FOLLOW ALL THE DIVING / SLIDE EQUIPMENT MANUFACTURER'S INSTALLATION, USE AND SAFETY INSTRUCTIONS.

MEETS DEPTH AND SHAPE MINIMUM STANDARD ANSI/NSPI5-2003

STEEL CHECK



## STAKE OUT

SHAPE : GRECIAN	SIZE : 19'-4" X 35'-4"	HAND : NONE	PANEL HEIGHT : 3'-6"	DRAWN BY : NM-BCC
DWG # : MN1935GR-19	DATE : 12/22/2016	REVISION # : 01	KIT REF : MN1935GR-19-X	<b>B</b>



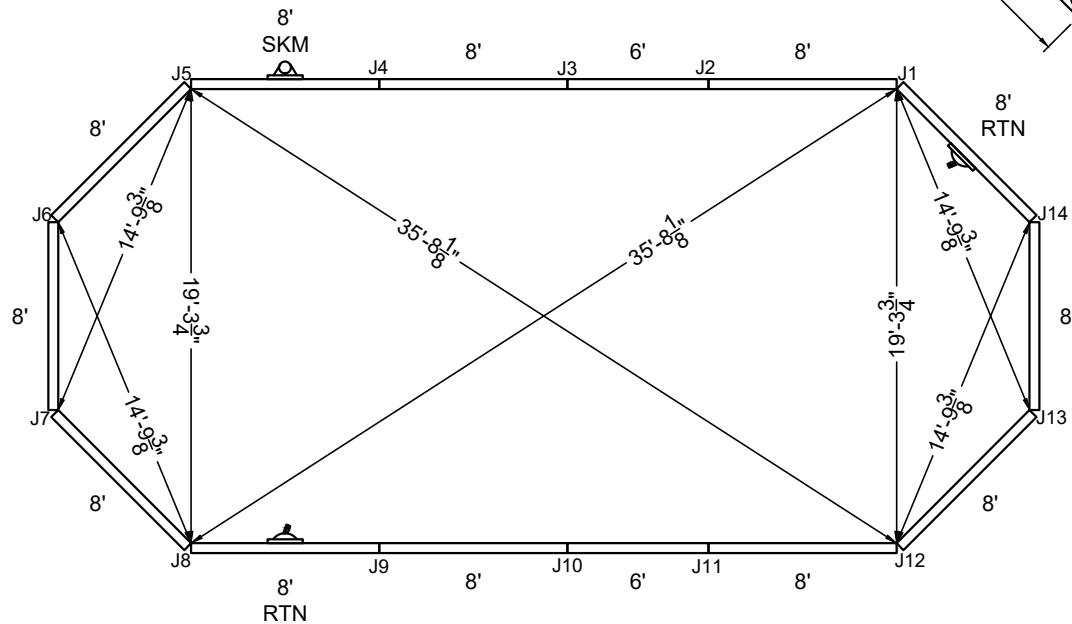
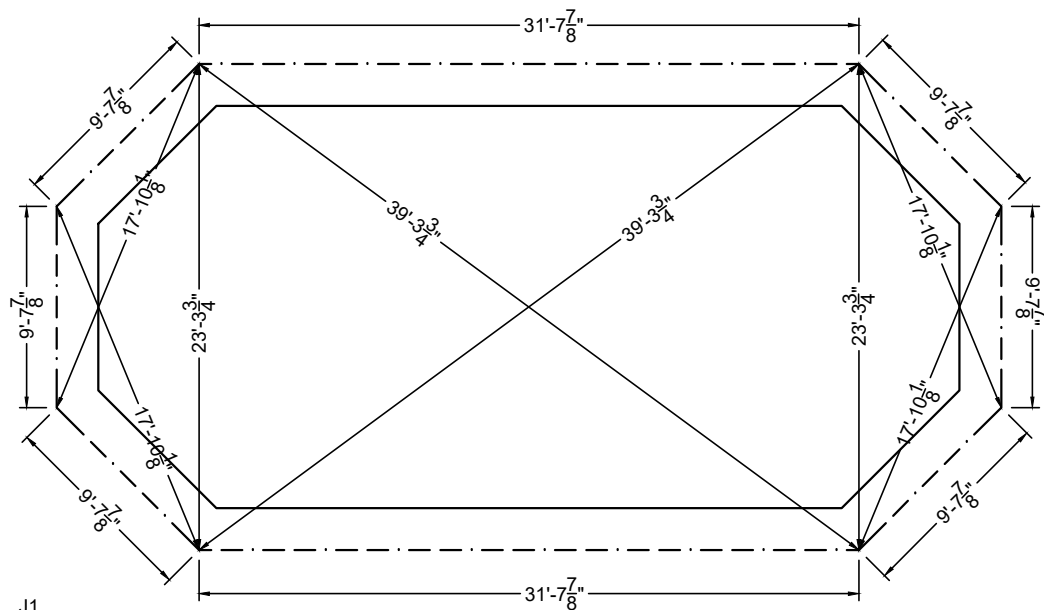
ALL DIMENSIONS ARE FINISHED

# DIVING / SLIDE EQUIPMENT DISCLAIMER:

THE BOTTOM CONFIGURATION SHOWN MEETS WITH THE CURRENT ISPC MINIMUM STANDARDS FOR POOLS APPROVED FOR THE USE WITH MANUFACTURED DIVING EQUIPMENT. ALL DIVING EQUIPMENT MUST BE INSTALLED AND LOCATED IN ACCORDANCE WITH THE DIVING / SLIDE MANUFACTURER'S RECOMMENDATIONS. IF DIVING EQUIPMENT IS INSTALLED: PLEASE FOLLOW ALL THE DIVING / SLIDE EQUIPMENT MANUFACTURER'S INSTALLATION, USE AND SAFETY INSTRUCTIONS.

MEETS DEPTH AND SHAPE MINIMUM STANDARD ANSI/NSPI5-2003

STEEL CHECK



STAKE OUT

SHAPE : GRECIAN	SIZE : 19'-4" X 41'-4"	HAND : NONE	PANEL HEIGHT : 3'-6"	DRAWN BY : NM-BCC
DWG # : MN1941GR-19	DATE : 12/22/2016	REVISION # : 01	KIT REF : MN1941GR-19-X	<b>B</b>



MEGNA  
POOLS

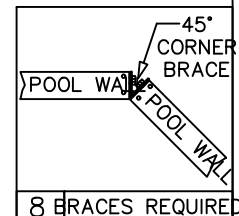
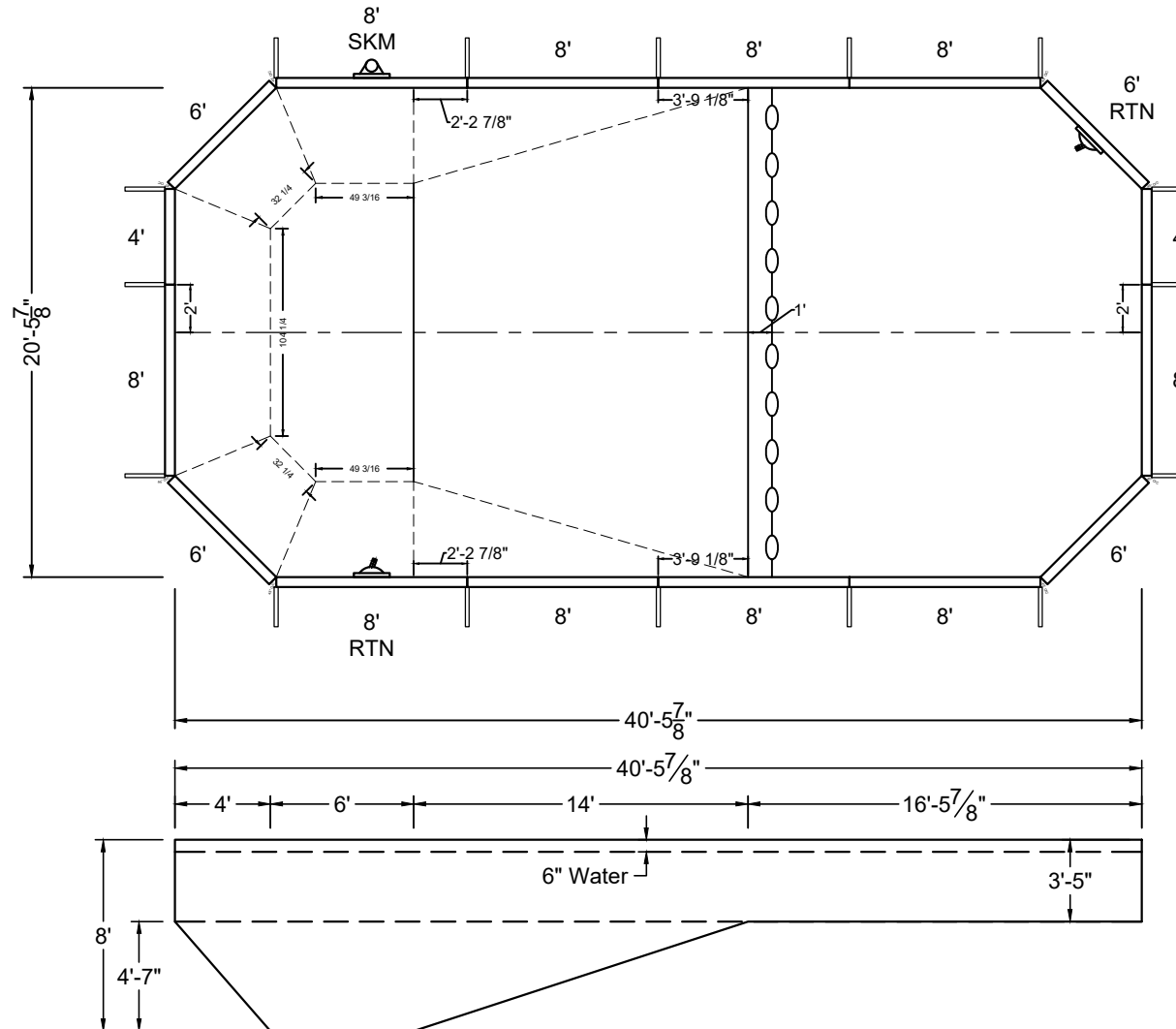
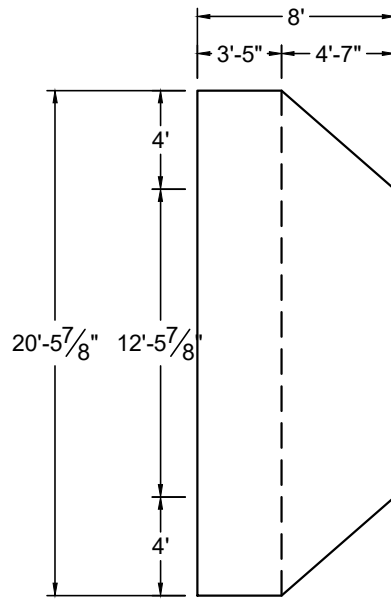
Megna Plastic Packaging Corp.

ALL DIMENSIONS ARE FINISHED

# DIVING / SLIDE EQUIPMENT DISCLAIMER:

THE BOTTOM CONFIGURATION SHOWN MEETS WITH THE CURRENT ISPSC MINIMUM STANDARDS FOR POOLS APPROVED FOR THE USE WITH MANUFACTURED DIVING EQUIPMENT. ALL DIVING EQUIPMENT MUST BE INSTALLED AND LOCATED IN ACCORDANCE WITH THE DIVING / SLIDE MANUFACTURER'S RECOMMENDATIONS. IF DIVING EQUIPMENT IS INSTALLED: PLEASE FOLLOW ALL THE DIVING / SLIDE EQUIPMENT MANUFACTURER'S INSTALLATION, USE AND SAFETY INSTRUCTIONS.

MEETS DEPTH AND SHAPE MINIMUM STANDARD ANSI/NSPI5-2003



8 BRACES REQUIRED

SHAPE : GRECIAN	SIZE : 20'-6" X 40'-6"	HAND : NONE	PANEL HEIGHT : 3'-6"	PANEL TYPE : 5" TOP
PERIMETER : 112'	VOLUME : 29,057 US GAL.	SURFACE AREA : 793.352 SQ. FT.	SCALE : N.T.S	DRAWN BY : NM-BCC
DWG # : MN2040GR-19	DATE : 12/22/2016	REVISION # : 01	KIT REF : MN2040GR-19-X	<b>A</b>

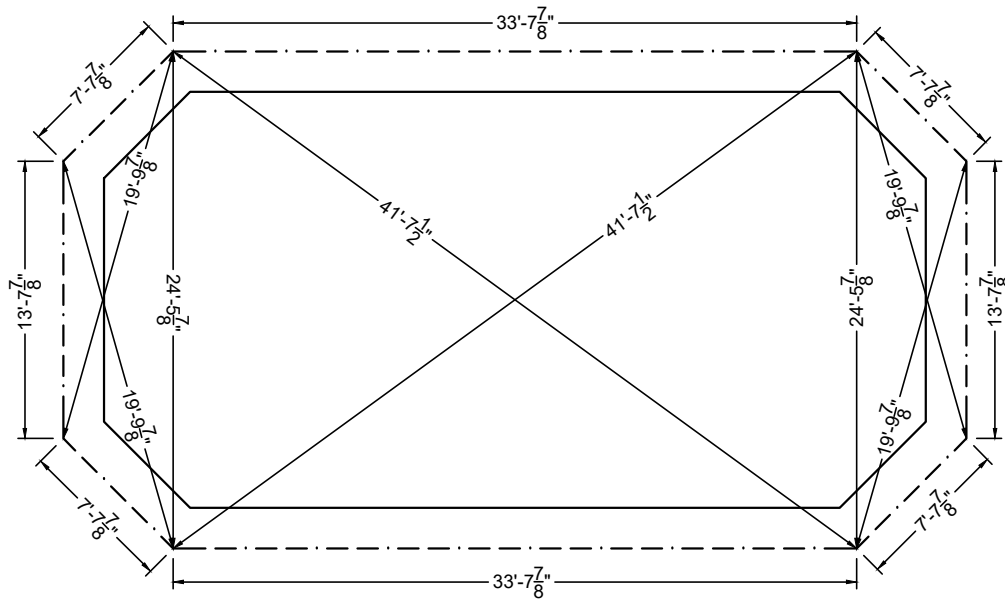
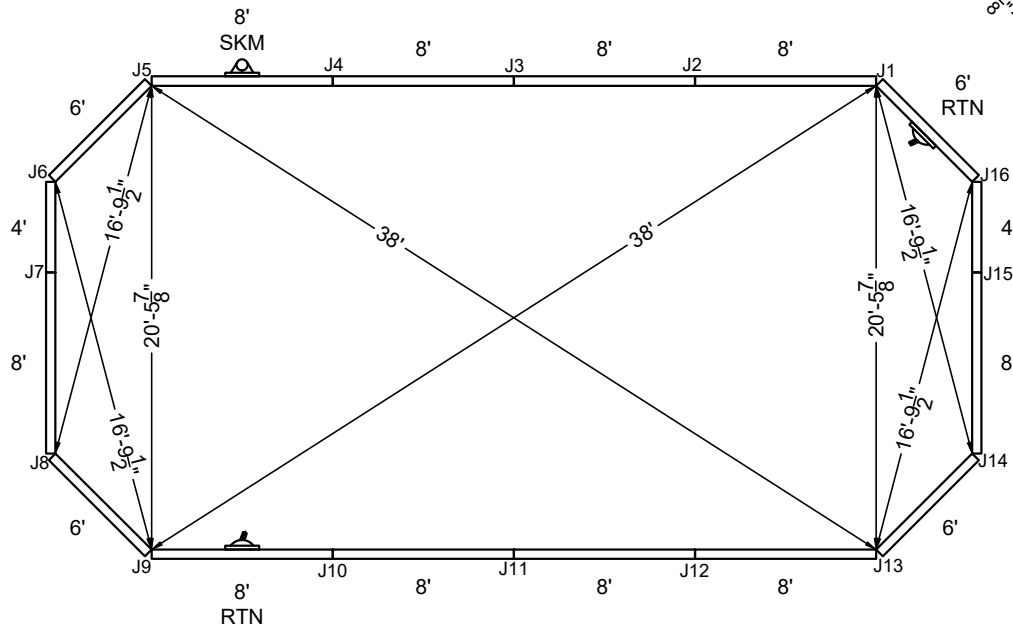
ALL DIMENSIONS ARE FINISHED

DIVING / SLIDE EQUIPMENT DISCLAIMER:

THE BOTTOM CONFIGURATION SHOWN MEETS WITH THE CURRENT ISPSC MINIMUM STANDARDS FOR POOLS APPROVED FOR THE USE WITH MANUFACTURED DIVING EQUIPMENT. ALL DIVING EQUIPMENT MUST BE INSTALLED AND LOCATED IN ACCORDANCE WITH THE DIVING / SLIDE MANUFACTURER'S RECOMMENDATIONS. IF DIVING EQUIPMENT IS INSTALLED: PLEASE FOLLOW ALL THE DIVING / SLIDE EQUIPMENT MANUFACTURER'S INSTALLATION, USE AND SAFETY INSTRUCTIONS.

MEETS DEPTH AND SHAPE MINIMUM STANDARD ANSI/NSPI-2003

STEEL CHECK



STAKE OUT

SHAPE : GRECIAN	SIZE : 20'-6" X 40'-6"	HAND : NONE	PANEL HEIGHT : 3'-6"	DRAWN BY : NM-BCC
DWG # : MN2040GR-19	DATE : 12/22/2016	REVISION # : 01	KIT REF : MN2040GR-19-X	<b>B</b>